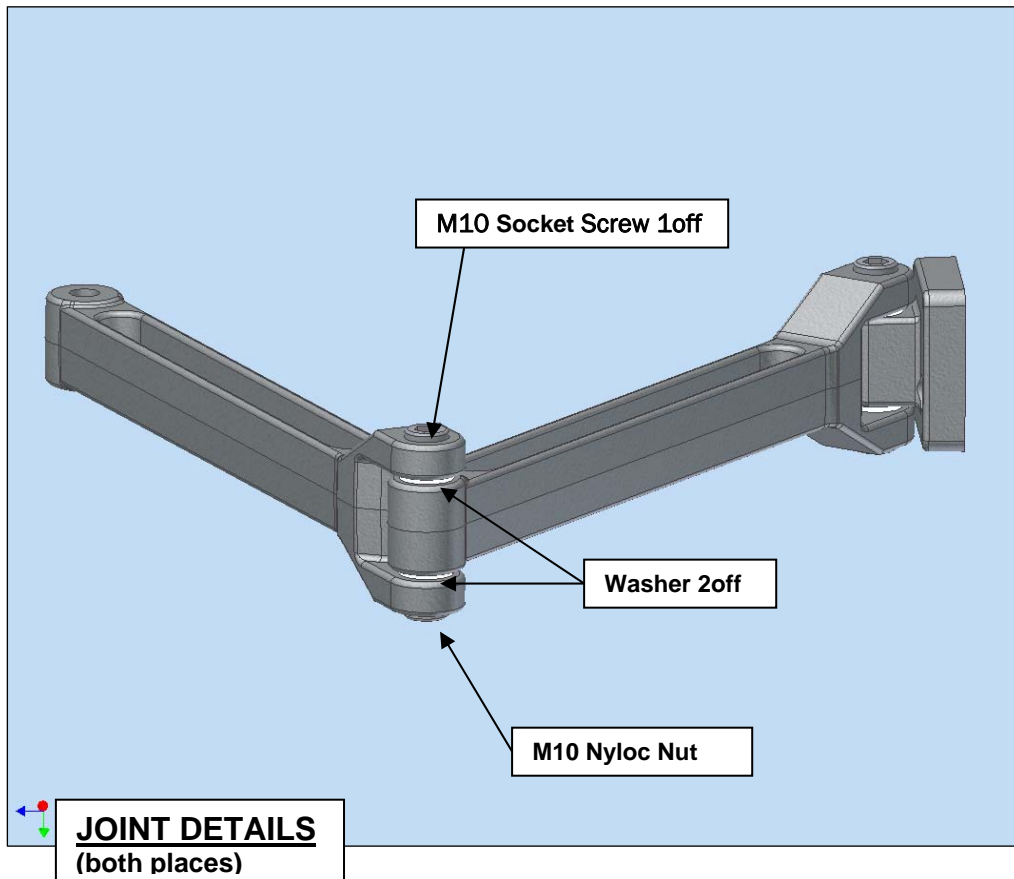


NEWALL

DATA SHEET – Mounting Arms



NOTE

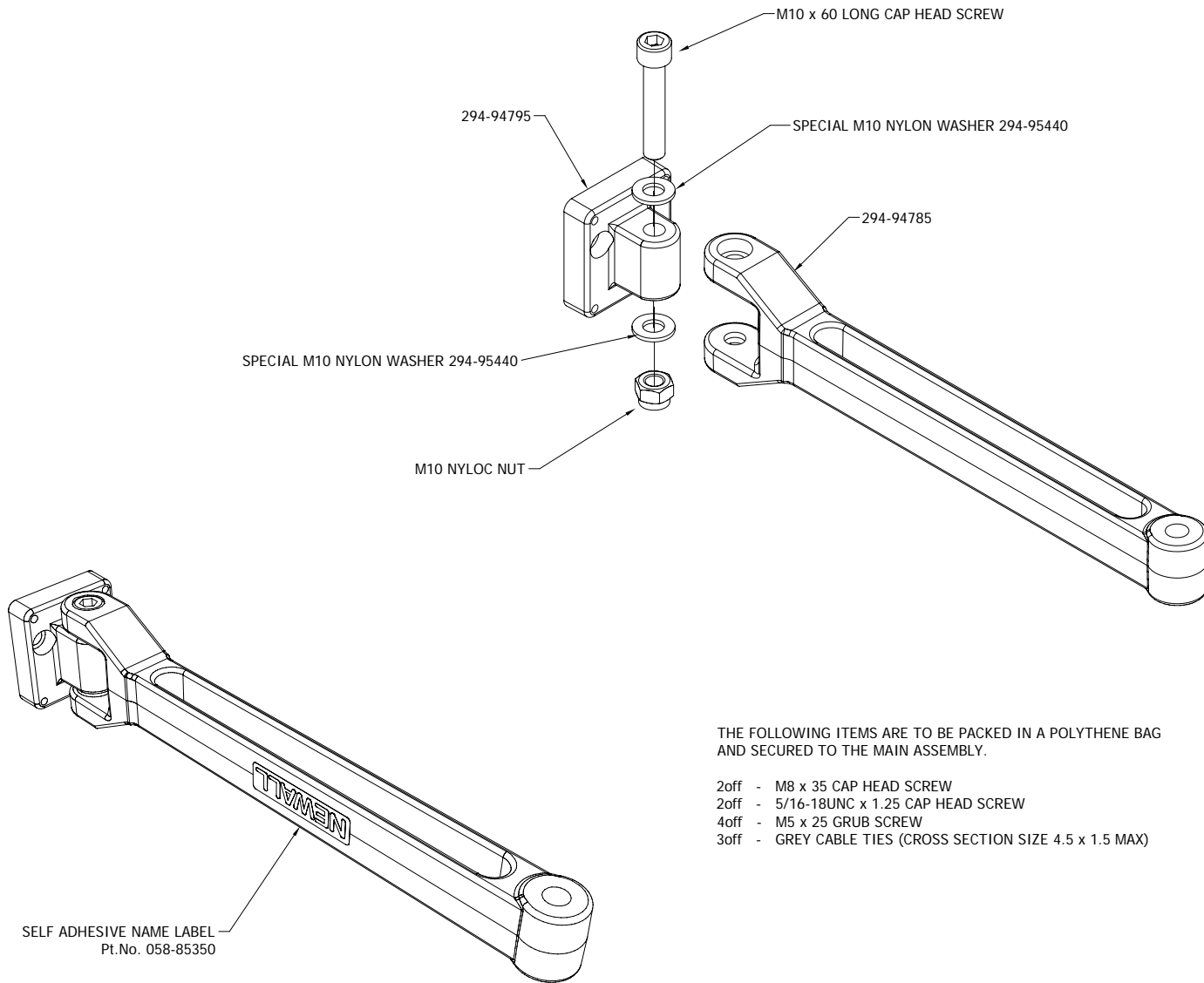
NOTE DO NOT TIGHTEN M10 FIXING SCREW BEYOND A TORQUE OF 130lbf.in. (14N.m) AS DAMAGE MAY RESULT.

023-81290/0



Newall Measurement Systems Limited
Custom Sensors & Technologies

Technology Gateway, Cornwall Road, South Wigston, Leicester, LE18 4XH, United Kingdom
Tel: +44 (0) 116 264 2730 Fax: +44 (0) 116 264 2731 www.newall.com sales@newall.co.uk
Registered office: Technology Gateway, Cornwall Road, South Wigston, Leicester, LE18 4XH
Registered in England No. 5199004



THE FOLLOWING ITEMS ARE TO BE PACKED IN A POLYTHENE BAG AND SECURED TO THE MAIN ASSEMBLY.

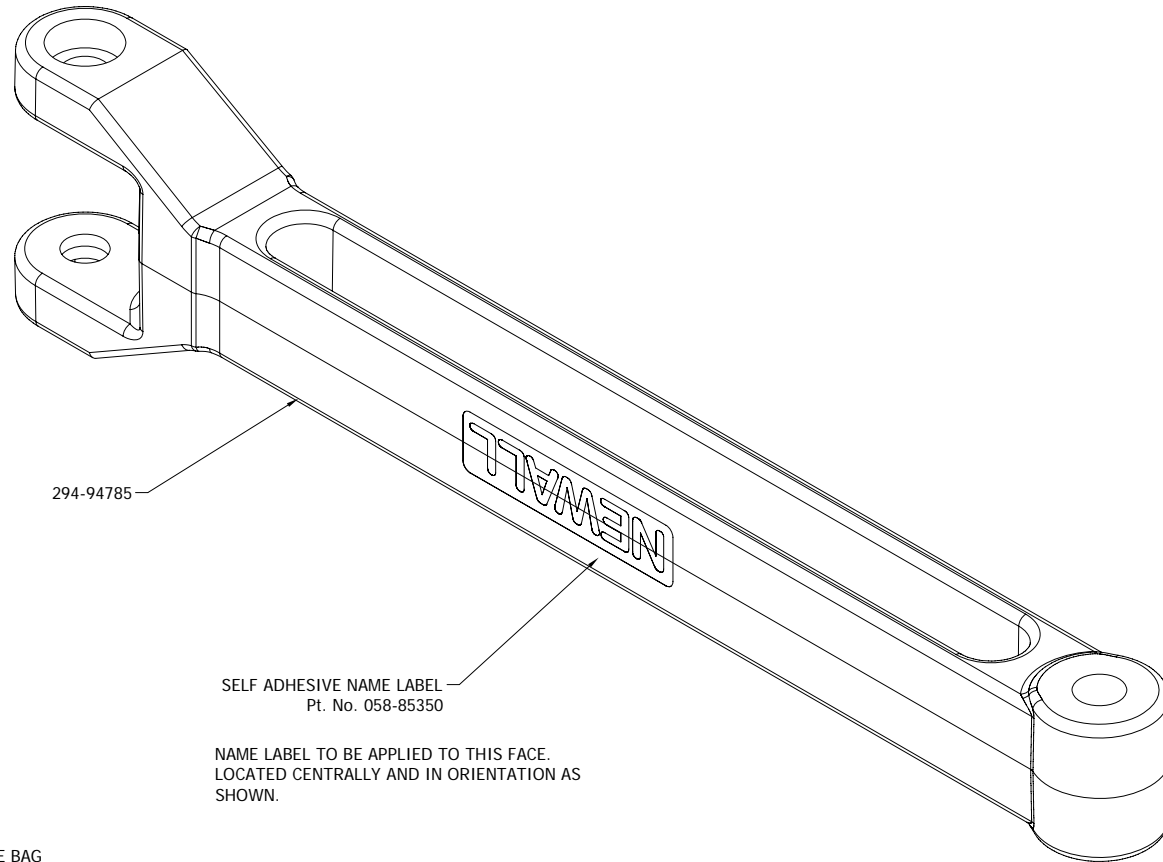
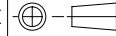
- 2off - M8 x 35 CAP HEAD SCREW
- 2off - 5/16-18UNC x 1.25 CAP HEAD SCREW
- 4off - M5 x 25 GRUB SCREW
- 3off - GREY CABLE TIES (CROSS SECTION SIZE 4.5 x 1.5 MAX)

SELF ADHESIVE NAME LABEL
Pt.No. 058-85350

NAME LABEL TO BE APPLIED TO THIS FACE.
LOCATE CENTRALLY AND IN ORIENTATION AS SHOWN.

ASSEMBLY PART NUMBER 600-84110

4	27-10-08	ECN9030	M10 x 55 LONG SCREW NOW M10 x 60 LONG	JFD	TITLE	MATERIAL/FINISH	SCALE	UNLESS OTHERWISE STATED: -	TOLERANCES: - 0 DECIMAL PLACES ± 0.5 1 DECIMAL PLACES ± 0.2 2 DECIMAL PLACES ± 0.1 ANGULAR ± 1'	
3	1-9-08	ECN9013	NAME LABEL AND ASSY PT. NO. ADDED	JFD	MOUNTING ARM ASSEMBLY		1=2			
2	30-05-08	ECN8974	M10 NYLON WASHER - 2off - 294-95440	TH						
1	27-11-07	pre-prod	PARTS TO BE PACKED WITH ARM MODIFIED	CW						
REV. ISS.	DATE	C. N. No.	ALTERATION		DRAWN	chris.w				
					DATE	11/26/2007	Leicester	England		
						<small>THIS DRAWING IS THE PROPERTY OF METAL MEASUREMENT SYSTEMS LTD. THE INFORMATION THEREON MAY NOT BE COPIED OR USED WITHOUT WRITTEN PERMISSION</small>		SHEET 1 OF 1	DRAWING NUMBER 316-84930	REV. ISS. 4



294-94785

SELF ADHESIVE NAME LABEL
Pt. No. 058-85350

NAME LABEL TO BE APPLIED TO THIS FACE.
LOCATED CENTRALLY AND IN ORIENTATION AS
SHOWN.

THE FOLLOWING ITEMS ARE TO BE PACKED IN A POLYTHENE BAG
AND SECURED TO THE MAIN ASSEMBLY.

- 1off - M10 x 60 CAP HEAD SCREW
- 1off - M10 NYLOC NUT
- 3off - GREY CABLE TIES (CROSS SECTION SIZE 4.5 x 1.5 MAX)
- 2off - M10 NYLON WASHER - 294-95440

ASSEMBLY PART NUMBER 600-84140

5	27-10-08	ECN9030	SCREW M10x60 WAS M10x55 LONG.	JFD	TITLE		MATERIAL/FINISH		SCALE	UNLESS OTHERWISE STATED: -	TOLERANCES: - 0 DECIMAL PLACES ±0.5 1 DECIMAL PLACES ±0.2 2 DECIMAL PLACES ±0.1 ANGULAR ±1°
4	1-9-08	ECN9013	NAME LABEL AND ASSY. PT. NO. ADDED.	TH	EXTENSION ARM ASSY				1 = 1		
2	30-05-08	ECN8974	M10 NYLON WASHER - 2off - 294-95440	TH							
1	18-12-07	pre-prod	M10 x 55 CAP HEAD WAS M8 x 35	CW	DRAWN	chris.w	N Leicester	England	SHEET 1 OF 1	DRAWING NUMBER	316-84960
REV. ISS.	DATE	C. N. No.	ALTERATION	DATE	11/27/2007						

THIS DRAWING IS THE PROPERTY OF
METAL MEASUREMENT SYSTEMS LTD.
THE INFORMATION THEREON MAY NOT BE COPIED OR USED
WITHOUT WRITTEN PERMISSION

REV. 5