

CANopen ABSOLUTE SINGLE TURN ENCODERS, CHU9 RANGE

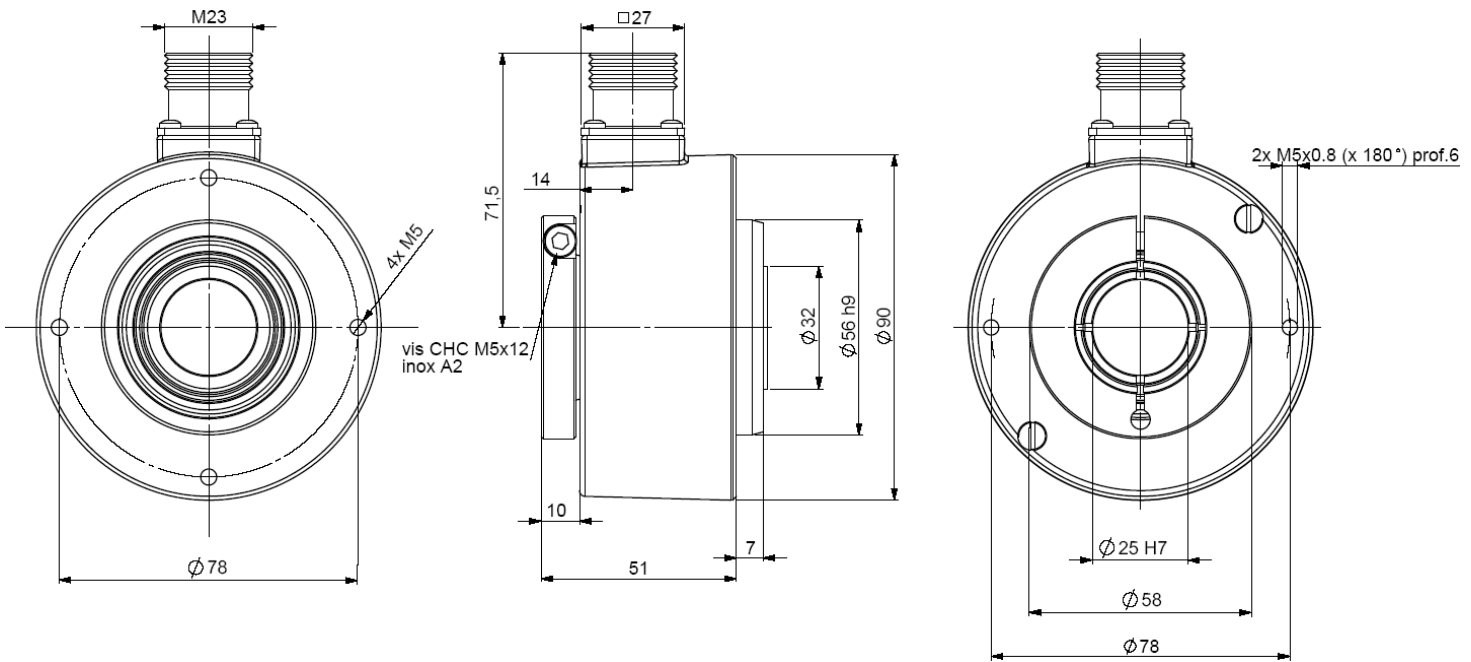
CHU9, the new generation of CANopen absolute single turn encoders :

- Through hollow shaft version Ø30mm, reduction hubs available,
- 90mm encoder, extra-flat,
- Robustness and excellent resistance to shocks / vibrations,
- High protection level IP65,
- High performances in temperature -20°C to 80°,
- Universal power supply from 5 to 30 Vdc,
- High resolutions up to 8192 points per turn (2¹³).

CANopen
DS 301 V4.02
DS 406 V3.1



CHU9_25 connection BCR (radial M23), with reduction hub 9418/I25 (25mm) mounted on the shaft



MECHANICAL CHARACTERISTICS

Material	Cover : zinc alloy	Vibrations (EN60068.2.6)	≤ 200m.s ⁻² (10 ... 1 000Hz)
Stainless steel option	Body : aluminium	EMC	EN 61000-6-4, EN 61000-6-2
Shaft	Inox	Isolation	500V (1min)
Bearings	6807 serie	Encoder weight (approx.)	0,700 kg zinc alloy cover, alu body
Maximal loads	Axial : 50 N		1,00 kg zinc alloy cover, stainless steel body
	Radial : 80 N		1,20 kg stainless steel cover and body
Shaft inertia	≤ 55.10 ⁻⁶ kg.m ²	Operating temperature	- 20 ... + 80°C (encoder T°)
Torque	≤ 25.10 ⁻³ N.m	Storage temperature	- 40... + 80°C
Permissible max. speed	6 000 min ⁻¹	Protection(EN 60529)	IP 65
Continuous max. speed	3 600 min ⁻¹	Torque (ring screw)	nominal: 3N.m, break: 4N.m
Shaft seal	Viton	Theoretical mechanical lifetime 10 ⁹ turns (F _{axial} / F _{radial})	
Shocks (EN60068.2.27)	≤ 500 m.s ⁻² (during 6 ms)	25 N / 40 N : 140	50 N / 80 N : 17

CANopen ABSOLUTE SINGLE TURN ENCODERS, CHU9 RANGE

CANopen

ELECTRICAL CHARACTERISTICS

Power supply	5 – 30Vdc
Introduction	< 1 s
Consumption (without load)	< 50mA (at 24Vdc)
Accuracy	± ½ LSB (13 bits)

Programmable parameters

Resolution: defines the resolution per revolution (0 to 8 192),

Transmission speed : programmable from 10kbaud (1000m) to 1 Mbaud (40 m) ; value per default: 20 Kbaud,

Address: define the software address of the encoder on the bus (1 to 127, value by default: id = 1),

Direction : define the direction of count of the encoder,

RAX : defines the value of its preset position (non turning shaft),

CAM: Low and High Limits.

Communication modes

3 modes are available to interrogate the encoder :

POLLING mode: (Response to a RTR message): The position value is only given upon request (SDO mode),

CYCLIC mode: the encoder transmits its position in an asynchronous manner. The frequency of the transmission is defined by the programmable cyclical timer register from 0 to 65 535 ms,

SYNCHRO mode: the encoder transmits its position on a synchronous demand by the master.

CANOPEN CONNECTION

1	2	3	4	5	6	7	8, 9, 11	10	12
Reserved	CAN LOW	CAN GND	Reserved	Reserved	Reserved	CAN HIGH	Reserved	0V	+ 5/30Vdc

Pinout 3 (CAN GND) and 10 (0V) are connected together (intern the encoder).

Nota : Refer to the bus standards for the maximal derivation length.

ORDERING CODE (Special versions upon request, for ex. special flanges/electronics/connections...)

	Shaft Ø	Power supply	Output stage	Code	Resolution	Connection	Connection orientation
CHU9	30 : 30mm Reduction hubs available	P : 5 to 30Vdc	BB : CANopen	B: Binary	13 : 8192 ppoints per revolution (2 ¹³)	BC: M23 12 pinouts clockwise	R : radial
CHU9 _	30 //	P	BB	B //	13 //	BC	R

Made in France

Datasheets provided by Sensata Technologies, Inc., its subsidiaries and/or affiliates (“Sensata”) are solely intended to assist third parties (“Buyers”) who are developing systems that incorporate Sensata products (also referred to herein as “components”). Buyer understands and agrees that Buyer remains responsible for using its independent analysis, valuation, and judgment in designing Buyer’s systems and products. Sensata datasheets have been created using standard laboratory conditions and engineering practices. Sensata has not conducted any testing other than that specifically described in the published documentation for a particular datasheet. Sensata may make corrections, enhancements, improvements, and other changes to its datasheets or components without notice.

Buyers are authorized to use Sensata datasheets with the Sensata component(s) identified in each particular datasheet. HOWEVER, NO OTHER LICENSE, EXPRESS OR IMPLIED, BY ESTOPPEL OR OTHERWISE TO ANY OTHER SENSATA INTELLECTUAL PROPERTY RIGHT, AND NO LICENSE TO ANY THIRD PARTY TECHNOLOGY OR INTELLECTUAL PROPERTY RIGHT, IS GRANTED HEREIN. SENSATA DATASHEETS ARE PROVIDED “AS IS”. SENSATA MAKES NO WARRANTIES OR REPRESENTATIONS WITH REGARD TO THE DATASHEETS OR USE OF THE DATASHEETS, EXPRESS, IMPLIED, OR STATUTORY, INCLUDING ACCURACY OR COMPLETENESS. SENSATA DISCLAIMS ANY WARRANTY OF TITLE AND ANY IMPLIED WARRANTIES OF MERCHANTABILITY, FITNESS FOR A PARTICULAR PURPOSE, QUIET ENJOYMENT, QUIET POSSESSION, AND NON-INFRINGEMENT OF ANY THIRD PARTY INTELLECTUAL PROPERTY RIGHTS WITH REGARD TO SENSATA DATASHEETS OR USE THEREOF.

All products are sold subject to Sensata’s terms and conditions of sale supplied at www.sensata.com. SENSATA ASSUMES NO LIABILITY FOR APPLICATIONS ASSISTANCE OR THE DESIGN OF BUYERS’ PRODUCTS. BUYER ACKNOWLEDGES AND AGREES THAT IT IS SOLELY RESPONSIBLE FOR COMPLIANCE WITH ALL LEGAL, REGULATORY, AND SAFETY-RELATED REQUIREMENTS CONCERNING ITS PRODUCTS, AND ANY USE OF SENSATA COMPONENTS IN ITS APPLICATIONS, NOTWITHSTANDING ANY APPLICATIONS-RELATED INFORMATION OR SUPPORT THAT MAY BE PROVIDED BY SENSATA.

Mailing Address: Sensata Technologies, Inc., 529 Pleasant Street, Attleboro, MA 02703, USA

CONTACT US

Regional head offices:

United States of America

Sensata Technologies

Attleboro, MA

Phone: 508-236-3800

E-mail: support@sensata.com

Netherlands

Sensata Technologies Holland B.V.

Hengelo

Phone: +31 74 357 8000

E-mail: support@sensata.com

China

Sensata Technologies China Co., Ltd.

Shanghai

Phone: +8621 2306 1500

E-mail: support@sensata.com

Copyright © 2023 Sensata Technologies, Inc.