

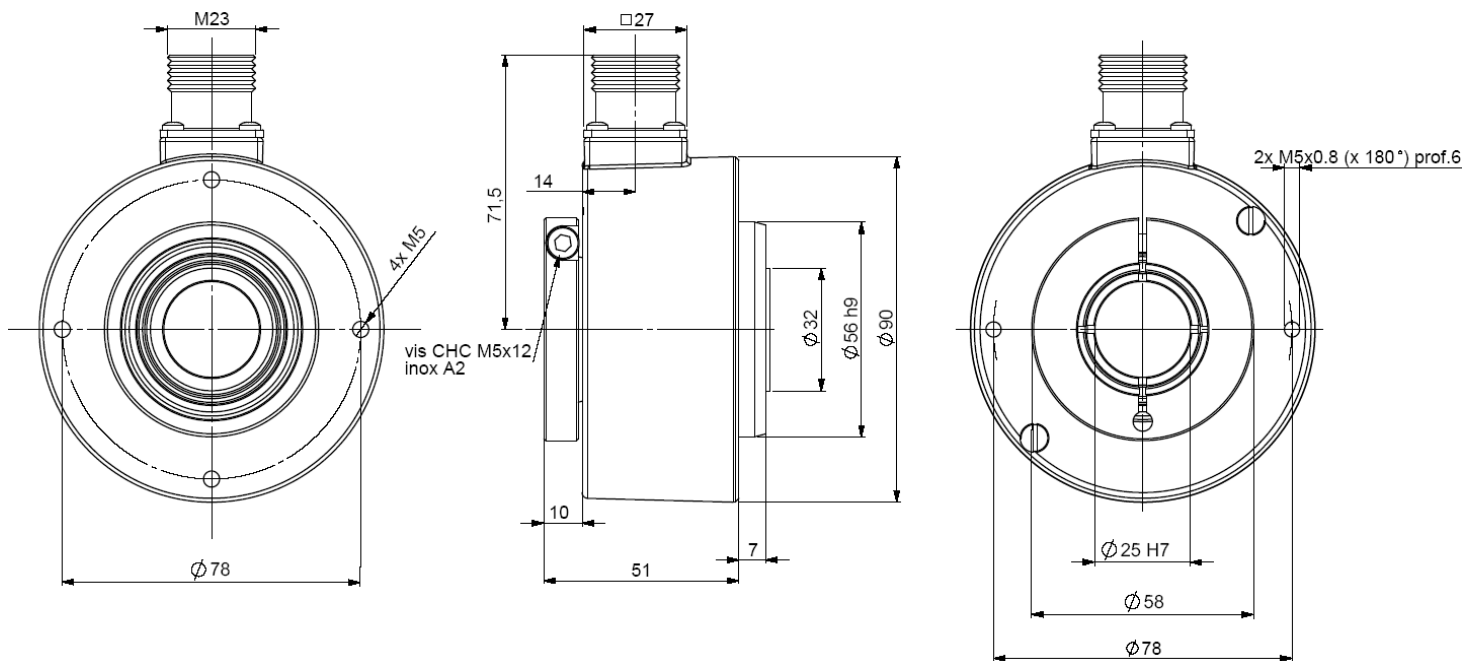
PARALLEL ABSOLUTE SINGLE TURN ENCODERS, CHU9 RANGE

CHU9, 90mm parallel absolute single turn encoders :

- Especially designed for heavy-duty (steel, paper, wood – mills, cranes ...) Compact and robust conception. Excellent resistance to shocks/vibrations and to high axial/radial loads.
- Through hollow shaft 30mm, reduction hubs available from 10 to 28mm.
- High protection level IP65.
- High performances in temperature -20°C to 90°C.
- Universal power supply from 5 to 30 Vdc – parallel output.
- High resolutions possibility, up to 14 bits (Gray or binary).
- Standard DIRECTION input.
- Double/triple mounting in combinations of incremental, absolute, analogue signals.



CHU9_25 connection CPR (radial M23), with reduction hub 9418/125 (25mm) mounted on the shaft



MECHANICAL CHARACTERISTICS

Material	Cover : zinc alloy	Vibrations (EN60068.2.6)	$\leq 200 \text{ m.s}^{-2}$ (10 ... 1 000Hz)
Stainless steel option	Body : aluminium	EMC	EN 61000-6-4, EN 61000-6-2
Shaft	Stainless steel	Isolation	1000 Veff
Bearings	6807 serie	Encoder weight (approx.)	0,700kg zinc alloy cover, alu body
Maximum loads	Axial : 50 N		1,000kg zinc alloy cover, stainless steel body
	Radial : 80 N		1,200kg stainless steel cover and body
Shaft inertia	$\leq 55.10^{-6} \text{ kg.m}^2$	Operating temperature	- 20 ... + 90 °C (encoder T°)
Torque	$\leq 25.10^{-3} \text{ N.m}$	Storage temperature	- 40 ... + 100 °C
Permissible max. speed	6 000 min ⁻¹	Protection(EN 60529)	IP 65
Continuous max. speed	3 600 min ⁻¹	Torque (ring screw)	nominal: 3N.m, break: 4N.m
Shaft seal	Viton	Theoretical mechanical lifetime 10 ⁹ turns (F _{axial} / F _{radial})	
Shocks (EN60068.2.27)	$\leq 500 \text{ m.s}^{-2}$ (during 6 ms)	25 N / 40 N : 140	50 N / 80 N : 17

PARALLEL ABSOLUTE SINGLE TURN ENCODERS, CHU9 RANGE

CONNECTION

	color	13 bits + DIRECTION CP or C3	14 bits + DIRECTION C1
1	white WH	0V	0V
2	brown BN	+Vcc	+Vcc
3	green GN	D0	D0
4	yellow YE	D1	D1
5	grey GY	D2	D2
6	pink PK	D3	D3
7	blue BU	D4	D4
8	red RD	D5	D5
9	black BK	D6	D6
10	violet VT	D7	D7
11	white/brown WH/BN	D8	D8
12	white/green WH/GN	D9	D9
13	white/yellow WH/YE	D10	D10
14	white/grey WH/GY	D11	D11
15	white/pink WH/PK	D12	D12
16	white/blue WH/BU	DIRECTION	D13
17	White/red WH/RD	/	DIRECTION

Example, 10 bits encoder : only MSB will be supplied (D3 to D12)

ORDERING REFERENCE (Contact the factory for special versions, ex: special flanges, connections, electronics...)

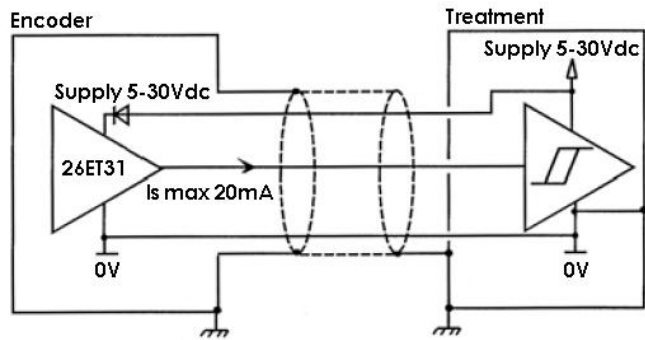
	Shaft Ø	Supply	Output stage	Code	Resolution	Connection	Orientation
CHU9 Cover : zinc Body : alu	30 : 30mm	P : 5 to 30Vdc	C5 : push pull 5 to 30Vdc	B : Binary G : Gray	Power of 2: 1 : 1 bit to 14 : 14 bits	CP : M23 16 pins 13 bits + direction	R : radial
CBU9 Cover : zinc Body : st. steel	Reduction hubs available 10 to 28mm					C1 : M23 17 pins 14 bits + direction	
CXU9 Stainless steel cover & body						C3 : cable gland + 16 wires cable	Example : R020 : radial cable 2m
CHU9	30	P	C5	G	13	C3	R020

Monitoring function available as option :

- of the code coherence.
- of the LED internal regulated current loop.
- of temperature range with 2 limits.

Consult us.

ELECTRONIC



Power supply : 5 to 30Vdc
Consumption without load : 100mA max
Current output per channel : Is=20mA max
Level '0' (Is=20mA) max : V_{oi} = 0,5Vdc
Level '1' (Is=20mA) min : V_{oh} = Vcc-2,5Vdc

Protection against short circuits and inversion of polarity

DIRECTION

CW increasing code: DIRECTION pin to +Vcc
CCW increasing code : DIRECTION pin to 0V

LATCH (option)

Active data on the outputs : LATCH pin to 0V
Frozen data on the outputs: LATCH pin to +Vcc

Consult us for the connection of an encoder with this option.

Made in FRANCE

Datasheets provided by Sensata Technologies, Inc., its subsidiaries and/or affiliates (“Sensata”) are solely intended to assist third parties (“Buyers”) who are developing systems that incorporate Sensata products (also referred to herein as “components”). Buyer understands and agrees that Buyer remains responsible for using its independent analysis, valuation, and judgment in designing Buyer’s systems and products. Sensata datasheets have been created using standard laboratory conditions and engineering practices. Sensata has not conducted any testing other than that specifically described in the published documentation for a particular datasheet. Sensata may make corrections, enhancements, improvements, and other changes to its datasheets or components without notice.

Buyers are authorized to use Sensata datasheets with the Sensata component(s) identified in each particular datasheet. HOWEVER, NO OTHER LICENSE, EXPRESS OR IMPLIED, BY ESTOPPEL OR OTHERWISE TO ANY OTHER SENSATA INTELLECTUAL PROPERTY RIGHT, AND NO LICENSE TO ANY THIRD PARTY TECHNOLOGY OR INTELLECTUAL PROPERTY RIGHT, IS GRANTED HEREIN. SENSATA DATASHEETS ARE PROVIDED “AS IS”. SENSATA MAKES NO WARRANTIES OR REPRESENTATIONS WITH REGARD TO THE DATASHEETS OR USE OF THE DATASHEETS, EXPRESS, IMPLIED, OR STATUTORY, INCLUDING ACCURACY OR COMPLETENESS. SENSATA DISCLAIMS ANY WARRANTY OF TITLE AND ANY IMPLIED WARRANTIES OF MERCHANTABILITY, FITNESS FOR A PARTICULAR PURPOSE, QUIET ENJOYMENT, QUIET POSSESSION, AND NON-INFRINGEMENT OF ANY THIRD PARTY INTELLECTUAL PROPERTY RIGHTS WITH REGARD TO SENSATA DATASHEETS OR USE THEREOF.

All products are sold subject to Sensata’s terms and conditions of sale supplied at www.sensata.com. SENSATA ASSUMES NO LIABILITY FOR APPLICATIONS ASSISTANCE OR THE DESIGN OF BUYERS’ PRODUCTS. BUYER ACKNOWLEDGES AND AGREES THAT IT IS SOLELY RESPONSIBLE FOR COMPLIANCE WITH ALL LEGAL, REGULATORY, AND SAFETY-RELATED REQUIREMENTS CONCERNING ITS PRODUCTS, AND ANY USE OF SENSATA COMPONENTS IN ITS APPLICATIONS, NOTWITHSTANDING ANY APPLICATIONS-RELATED INFORMATION OR SUPPORT THAT MAY BE PROVIDED BY SENSATA.

Mailing Address: Sensata Technologies, Inc., 529 Pleasant Street, Attleboro, MA 02703, USA

CONTACT US

Regional head offices:

United States of America

Sensata Technologies

Attleboro, MA

Phone: 508-236-3800

E-mail: support@sensata.com

Netherlands

Sensata Technologies Holland B.V.

Hengelo

Phone: +31 74 357 8000

E-mail: support@sensata.com

China

Sensata Technologies China Co., Ltd.

Shanghai

Phone: +8621 2306 1500

E-mail: support@sensata.com

Copyright © 2023 Sensata Technologies, Inc.