

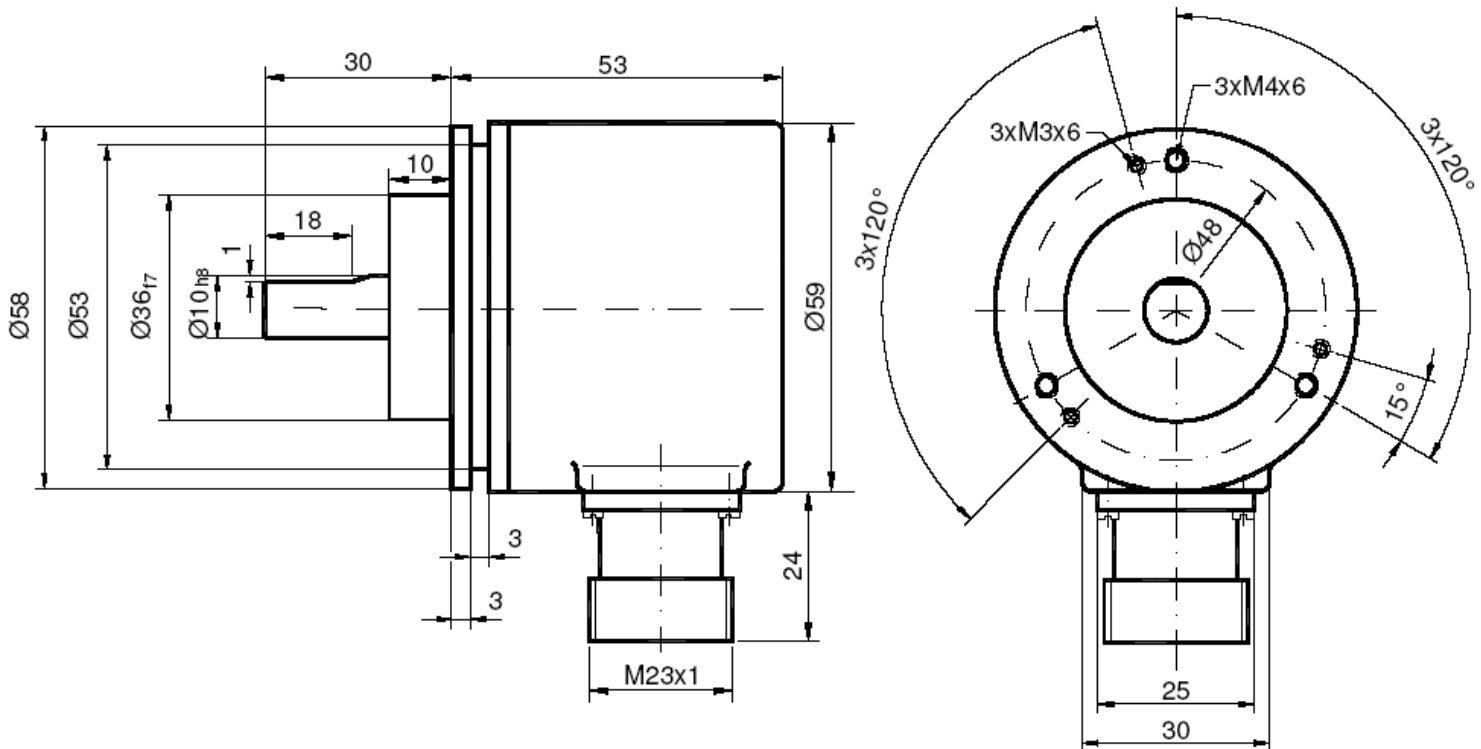
SSI ABSOLUTE MONOTURN ENCODERS, FHM510-SSIR

FHM510-SSIR standard encoder Ø58mm à transmission série :

- compact and robust conception
- Ø 10 mm solid shaft version
- Precision bearing with sealing flange
- high performances between -40°C and 85°C
- Coded disc in non-distortable and unbreakable material
- SSI transmission, GRAY code
- Resolution : 13 bits = 8192 points / turns (max 16 bits)
- Protection against polarity inversions and tensions
- High integration CMS Technology



FHM510-SSIR (M23 12 radial pins)



MECHANICAL CHARACTERISTICS

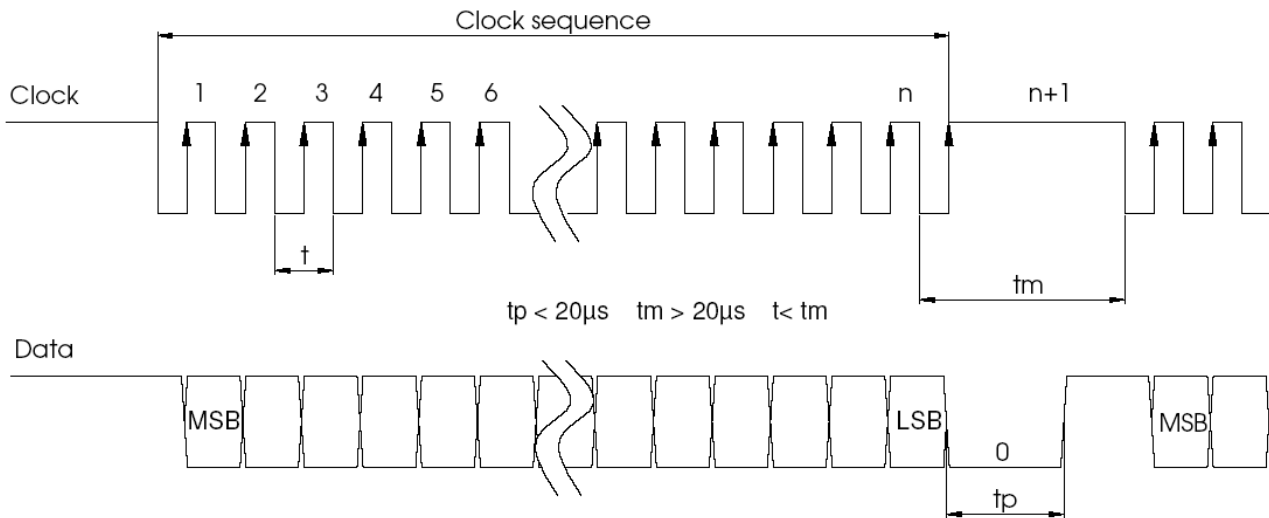
Material (stainless steel option)	Cover : aluminium	Vibrations (EN 60068-2-6)		≤ 10 g (10Hz... 1 000Hz)
	Body : aluminium	Weight (aluminium version)		200 g
	Shaft: stainless steel	Operating temperature		- 40 ... + 85°C
Maximal load	Axial : 40 N	Storing temperature		- 40 ... + 85°C
	Radial : 110 N	Humidity		98 % without condensation
Shaft inertia	≤ 30 g.cm ²	Protection degree		Cover: IP65 Body: IP64
Torque	≤ 3 N.cm	Electrical mechanical lifetime 10 ⁹ turns (F _{axial} /F _{radial})		
Maximal Speed (continuous)	12 000 tr/min			
Shocks (EN 60068-2-27)	≤ 100 g (half sinus, 6 ms)	40 N / 60 N	40 N / 80 N	40 N / 110 N
Shocks (EN 60028-2-29)	≤ 10 g (half-sinus, 16ms)	25	10	4

SSI ABSOLUTE MONOTURN ENCODERS, FHM510-SSIR

ELECTRICAL CHARACTERISTICS

Clock input signal CLK	per opto-coupleur	Cycle time (Reset)	< 150 μ s
Output signal DATA	line - driver RS422	introduction	< 1 s
Clock frequency CLK	100kHz - 2MHz	Consumption	max 1W
Precision	+ 1/2 LSB	Electrical lifetime	> 10 ⁵ h
Supply	4,75 - 30Vdc	EMC	EN 61000-6-4 EN 61000-6-2

SSI TRANSMISSION

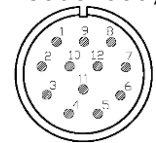


Driver	Donnée selon le standard RS422 ; transmission jusqu'à 10 Mbits/s
Transmission	Transmission up to 1 200m
Security	Transmission of signals
Câble	High security transmission by using shielded cable and twisted pairs

SSI CONNECTION ON CONNECTOR M23 12 PINS

Type	CLK -	CLK +	DATA +	DATA -	Sens	Reset	+ Ub 4,75-30Vdc	GND
S1	1	2	3	4	8	9	11	12

Encoder body:



INPUTS

Sense : counts when shaft in CW sense (body side)		Reset : Value back to zero	
0 (input = NC or GND)	increasing counting	0 (input = NC ou GND)	Position
1 (input = +Ub or \geq 4,5V)	Decreasing counting	1 (input = +Ub ou \geq 4,5V)	Reset on decreasing front (100ms)

REFERENCE (Exécution spécifique sur demande, ex: bride/électronique/connectique spécifique...)

FHM5	S1	01	G	00	13	C	10	0	PRL
absolute monoturn encoder	Reset Function	Version	Gray Code	monoturn encoder	Resolution in turn : 2 ¹³ (8 192)	Bride à vis et synchro	Shaft diameter : 10mm	without mechanical option	radial connector output

CODE DE COMMANDE : FHM510-SSIR-001 = FHM5 S1 01 G 00 13 C 10 0 PRL

Datasheets provided by Sensata Technologies, Inc., its subsidiaries and/or affiliates (“Sensata”) are solely intended to assist third parties (“Buyers”) who are developing systems that incorporate Sensata products (also referred to herein as “components”). Buyer understands and agrees that Buyer remains responsible for using its independent analysis, valuation, and judgment in designing Buyer’s systems and products. Sensata datasheets have been created using standard laboratory conditions and engineering practices. Sensata has not conducted any testing other than that specifically described in the published documentation for a particular datasheet. Sensata may make corrections, enhancements, improvements, and other changes to its datasheets or components without notice.

Buyers are authorized to use Sensata datasheets with the Sensata component(s) identified in each particular datasheet. HOWEVER, NO OTHER LICENSE, EXPRESS OR IMPLIED, BY ESTOPPEL OR OTHERWISE TO ANY OTHER SENSATA INTELLECTUAL PROPERTY RIGHT, AND NO LICENSE TO ANY THIRD PARTY TECHNOLOGY OR INTELLECTUAL PROPERTY RIGHT, IS GRANTED HEREIN. SENSATA DATASHEETS ARE PROVIDED “AS IS”. SENSATA MAKES NO WARRANTIES OR REPRESENTATIONS WITH REGARD TO THE DATASHEETS OR USE OF THE DATASHEETS, EXPRESS, IMPLIED, OR STATUTORY, INCLUDING ACCURACY OR COMPLETENESS. SENSATA DISCLAIMS ANY WARRANTY OF TITLE AND ANY IMPLIED WARRANTIES OF MERCHANTABILITY, FITNESS FOR A PARTICULAR PURPOSE, QUIET ENJOYMENT, QUIET POSSESSION, AND NON-INFRINGEMENT OF ANY THIRD PARTY INTELLECTUAL PROPERTY RIGHTS WITH REGARD TO SENSATA DATASHEETS OR USE THEREOF.

All products are sold subject to Sensata’s terms and conditions of sale supplied at www.sensata.com. SENSATA ASSUMES NO LIABILITY FOR APPLICATIONS ASSISTANCE OR THE DESIGN OF BUYERS’ PRODUCTS. BUYER ACKNOWLEDGES AND AGREES THAT IT IS SOLELY RESPONSIBLE FOR COMPLIANCE WITH ALL LEGAL, REGULATORY, AND SAFETY-RELATED REQUIREMENTS CONCERNING ITS PRODUCTS, AND ANY USE OF SENSATA COMPONENTS IN ITS APPLICATIONS, NOTWITHSTANDING ANY APPLICATIONS-RELATED INFORMATION OR SUPPORT THAT MAY BE PROVIDED BY SENSATA.

Mailing Address: Sensata Technologies, Inc., 529 Pleasant Street, Attleboro, MA 02703, USA

CONTACT US

Regional head offices:

United States of America

Sensata Technologies

Attleboro, MA

Phone: 508-236-3800

E-mail: support@sensata.com

Netherlands

Sensata Technologies Holland B.V.

Hengelo

Phone: +31 74 357 8000

E-mail: support@sensata.com

China

Sensata Technologies China Co., Ltd.

Shanghai

Phone: +8621 2306 1500

E-mail: support@sensata.com

Copyright © 2023 Sensata Technologies, Inc.