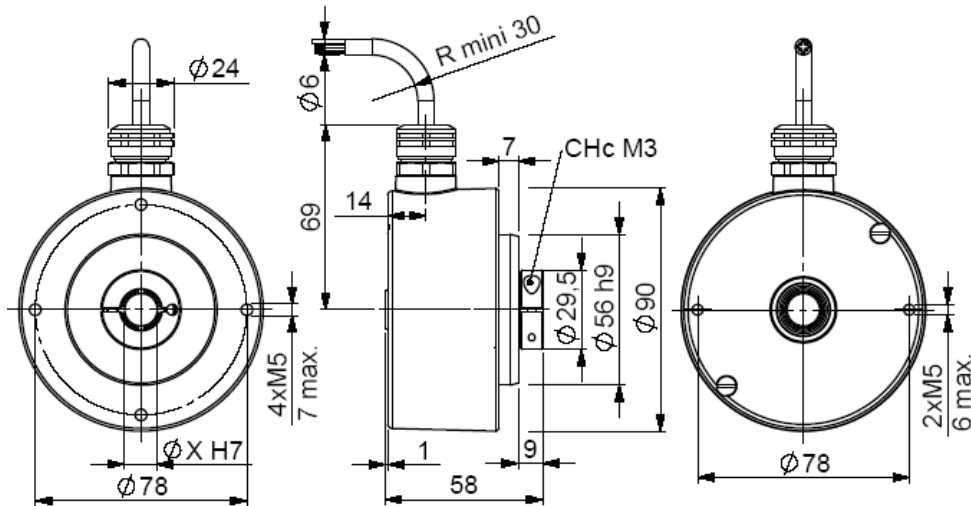


INCREMENTAL ENCODERS, GHT9 RANGE

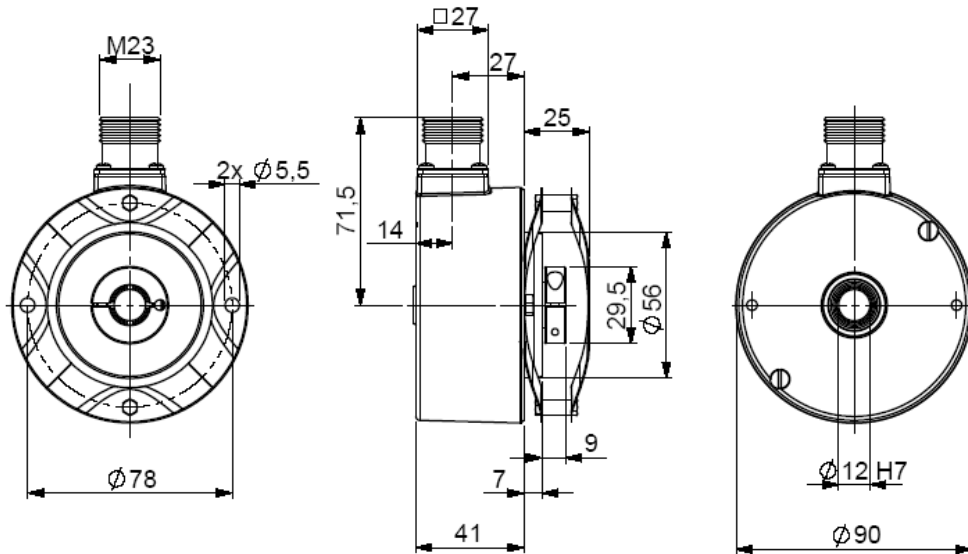
- Especially designed for heavy-duty applications: steel, paper mills, food industry, compact and robust encoder, its connection is done with industrial connector or shielded cable
- Hollow shaft: 10 or 12mm
- Digital incremental signals, option analogue output signals (Tachoencoders, optotachos)
- Self-monitoring MaxControl (optional) : detection of shocks, vibrations, temperatures, etc.
- Double/triple mounting in combinations of incremental, absolute, analog signals, overspeed switch



GHT9 connection G3R (radial cable)



GHT9_12 connection G6R (radial M23), with MEFLEX 9445/004 mounted on the body

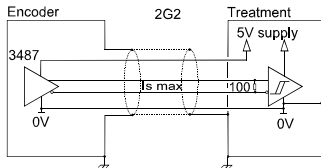


| | |
|------------------------|--------------------------------------------------------|
| Material | Cover : zinc alloy |
| Stainless steel option | Body: aluminium |
| Shaft | Stainless steel |
| Bearings | 61902 serie |
| Maximal loads | Axial : 50 N |
| | Radial : 100 N |
| Shaft inertia moment | $\leq 5,5 \cdot 10^{-6} \text{ kg} \cdot \text{m}^2$ |
| Torque | $\leq 15 \cdot 10^{-3} \text{ N} \cdot \text{m}$ |
| Permissible max. speed | 9 000 min ⁻¹ |
| Continuous max. speed | 6 000 min ⁻¹ |
| Shaft seal | Nitril |
| Shock (EN60068-2-27) | $\leq 500 \text{ m} \cdot \text{s}^{-2}$ (during 6 ms) |

| | |
|---------------------------------------------------------------------------------------------------|------------------------------------------------------------|
| Vibration (EN60068-2-6) | $\leq 200 \text{ m} \cdot \text{s}^{-2}$ (10 ... 1 000 Hz) |
| EMC | EN 50081-1, EN 61000-6-2 |
| Isolation | 1 000 V |
| Weight | 0,85 kg zinc alloy cover, alu body |
| | 1,0 kg zinc alloy cover, stainless steel body |
| | 1,2 kg stainless steel cover and body |
| Operating temperature | - 20 ... + 80 °C (encoder T°) |
| Storage temperature | - 40 ... + 80 °C |
| Protection(EN 60529) | IP 65 |
| Theoretical mechanical lifetime 10 ⁹ turns (F _{axial} / F _{radial}) | |
| 25 N / 50 N | 50 N / 100 N |
| 87 | 11 |

INCREMENTAL ENCODERS, GHT9 RANGE

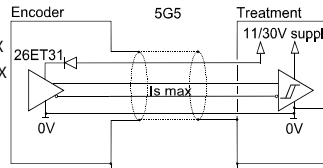
OUTPUT ELECTRONIC / SUPPLY



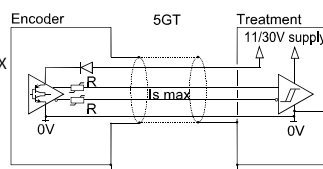
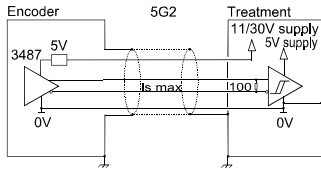
Supply : 5Vdc \pm 10%
Cons. without load : 100mA max
Current per channel : 40mA max
0 max ($I_s=20mA$) : $V_{ol} = 0,5Vdc$
1 min ($I_s=20mA$) : $V_{oh} = 2,5Vdc$

5G2 electronic (100kHz)

Supply : 11 to 30Vdc
Cons. without load : 75mA max
Current per channel : 40mA max
0 max ($I_s=20mA$) : $V_{ol} = 0,5Vdc$
1 min ($I_s=20mA$) : $V_{oh} = 2,5Vdc$



Supply : 11 to 30Vdc
Cons. without load : 75mA max
Current per channel : 40mA max
0 max ($I_s=20mA$) : $V_{ol} = 0,5Vdc$
1 min ($I_s=20mA$) : $V_{oh} = V_{cc} - 3Vdc$



5GT electronic, optional (100kHz)

Supply : 11 to 30Vdc
Cons. without load : 75mA max
Current per channel : 40mA max
0 max ($I_s=20mA$) : $V_{ol} = 0,5Vdc$
1 min ($I_s=20mA$) : $V_{oh} = V_{cc} - 2,5Vdc$

2G2 electronic (100kHz)

Electronics 5GT is designed for long and high capacity cables (contact our factory)

Available in option :

- 3G3 electronic, supply between 15 and 30Vdc, push-pull output regulated 12Vdc
- 5GH electronic permits to drive different inputs (plc + display for example)

Protection against short circuits the electronics: 5G5, 5GT, 3G3

Protection against inversion of polarity for all the electronics except 2G2

Option "Max control" : the encoder gives on real time its physical environment parameters: shocks and vibrations, too high or too low temperature, too low or too high supply, quality of the output signals : upon request..



STANDARD CONNECTION

| | | - | + | A | B | 0 | A/ | B/ | 0/ | Ground |
|----|-----------------------------|------------------------------|-----------------------------|----------|-----------|---------|---------|----------|----------|-------------------|
| G6 | 12 pins CW | 1 | 2 | 3 | 4 | 5 | 6 | 7 | 8 | connector body |
| G8 | 12 pins CCW | 10 + 11 | 2 + 12 | 8 | 5 | 3 | 1 | 6 | 4 | connector body |
| G3 | Cable PVC 8 wires 8230/020 | WH white | BN brown | GN green | YE yellow | GY grey | PK pink | BU bleu | RD red | general shielding |
| GP | Cable PUR 12 wires 8230/050 | WH white + WH/GN white/green | BU blue + BN/GN brown/green | GY grey | BN brown | RD red | PK pink | GN green | BK black | general shielding |

ORDERING REFERENCE (Contact the factory for special versions ex: overspeed switch, electronics, special flanges, connections ...)

| | Shaft Ø | Available electronic | | Output signal | Resolution | Connection | Connection orientation | | |
|------------------------------------------------------|----------------------|------------------------------------|--------------------------------------------------------------------------|--------------------------------------|------------|------------------------------------------------------------------|----------------------------------|-----------------------------------|------|
| GHT9 Cover : zinc Body: alu | 10: 10mm 12: 12mm | 2G2, 5G2, 5G5, 5GT, 5GH, 3G3 | | 9 : A,A/,B,B/,0,0/ (0, A&B gated) | 10 000 max | G6: M23 12 pins CW G5: M23 12 pins CCW G8: M23 12 pins CCW | R : radial | | |
| | | Supply | Output stages | | | | | | |
| GBT9 Cover : zinc Body: stainless steel | 10: 10mm 12: 12mm | 2 : 5Vdc | G2 : driver 5Vdc RS422 G3 : driver 12Vdc | A : A,A/,B,B/,0,0/ (0, A gated) | 10 000 max | G3 : PVC cable 8 wires GP : PUR cable 12 wires | Example: R020: axial 2m cable | | |
| GXT9 Cover and body: stainless steel | | 5 : 11 to 30Vdc 3 : 15 to 30Vdc | GT : push-pull 11-30Vdc transistorised GH : push-pull 11-30Vdc 150 mA | | | | | N : A,A/,B,B/,0,0/ (0 ungated) | |
| Ex: GHT9 | 12 | // | 5 | G5 | 9 | // | 5 000// | GP | R020 |

Available resolutions : 1 2 3 4 5 6 8 9 10 12 14 16 20 24 25 30 32 40 45 50 60 62 63 64 70 72 80 84 88 89 90 96 100 120 122 125 127 128 130 150 157 180 200 205 240 250 256 300 305 314 330 350 360 400 425 450 500 512 540 550 565 580 600 628 630 632 650 700 720 750 754 800 810 880 900 990 1000 1024 1080 1131 1152 1200 1250 1290 1440 1500 1600 1620 1800 2000 2048 2400 2500 2640 3000 3600 4000 4096 5000 7200 7335 9000 10000

Made in FRANCE

Datasheets provided by Sensata Technologies, Inc., its subsidiaries and/or affiliates (“Sensata”) are solely intended to assist third parties (“Buyers”) who are developing systems that incorporate Sensata products (also referred to herein as “components”). Buyer understands and agrees that Buyer remains responsible for using its independent analysis, valuation, and judgment in designing Buyer’s systems and products. Sensata datasheets have been created using standard laboratory conditions and engineering practices. Sensata has not conducted any testing other than that specifically described in the published documentation for a particular datasheet. Sensata may make corrections, enhancements, improvements, and other changes to its datasheets or components without notice.

Buyers are authorized to use Sensata datasheets with the Sensata component(s) identified in each particular datasheet. HOWEVER, NO OTHER LICENSE, EXPRESS OR IMPLIED, BY ESTOPPEL OR OTHERWISE TO ANY OTHER SENSATA INTELLECTUAL PROPERTY RIGHT, AND NO LICENSE TO ANY THIRD PARTY TECHNOLOGY OR INTELLECTUAL PROPERTY RIGHT, IS GRANTED HEREIN. SENSATA DATASHEETS ARE PROVIDED “AS IS”. SENSATA MAKES NO WARRANTIES OR REPRESENTATIONS WITH REGARD TO THE DATASHEETS OR USE OF THE DATASHEETS, EXPRESS, IMPLIED, OR STATUTORY, INCLUDING ACCURACY OR COMPLETENESS. SENSATA DISCLAIMS ANY WARRANTY OF TITLE AND ANY IMPLIED WARRANTIES OF MERCHANTABILITY, FITNESS FOR A PARTICULAR PURPOSE, QUIET ENJOYMENT, QUIET POSSESSION, AND NON-INFRINGEMENT OF ANY THIRD PARTY INTELLECTUAL PROPERTY RIGHTS WITH REGARD TO SENSATA DATASHEETS OR USE THEREOF.

All products are sold subject to Sensata’s terms and conditions of sale supplied at www.sensata.com. SENSATA ASSUMES NO LIABILITY FOR APPLICATIONS ASSISTANCE OR THE DESIGN OF BUYERS’ PRODUCTS. BUYER ACKNOWLEDGES AND AGREES THAT IT IS SOLELY RESPONSIBLE FOR COMPLIANCE WITH ALL LEGAL, REGULATORY, AND SAFETY-RELATED REQUIREMENTS CONCERNING ITS PRODUCTS, AND ANY USE OF SENSATA COMPONENTS IN ITS APPLICATIONS, NOTWITHSTANDING ANY APPLICATIONS-RELATED INFORMATION OR SUPPORT THAT MAY BE PROVIDED BY SENSATA.

Mailing Address: Sensata Technologies, Inc., 529 Pleasant Street, Attleboro, MA 02703, USA

CONTACT US

Regional head offices:

United States of America

Sensata Technologies

Attleboro, MA

Phone: 508-236-3800

E-mail: support@sensata.com

Netherlands

Sensata Technologies Holland B.V.

Hengelo

Phone: +31 74 357 8000

E-mail: support@sensata.com

China

Sensata Technologies China Co., Ltd.

Shanghai

Phone: +8621 2306 1500

E-mail: support@sensata.com

Copyright © 2023 Sensata Technologies, Inc.