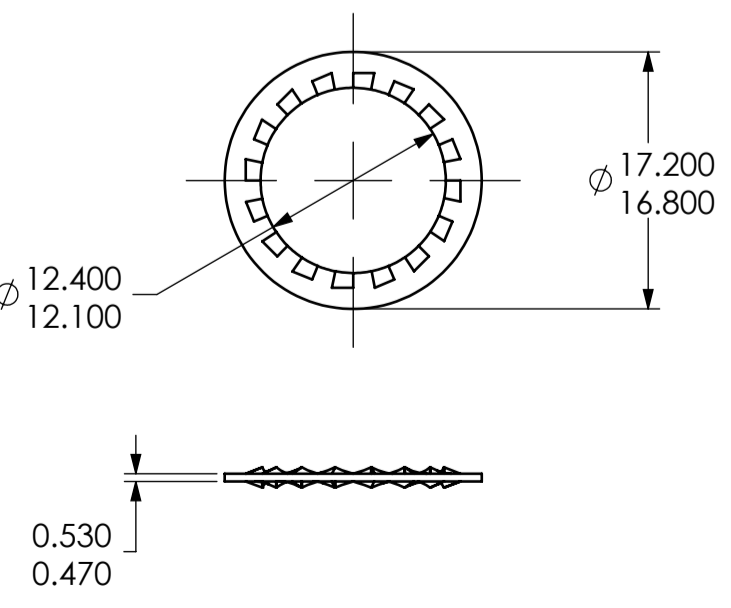
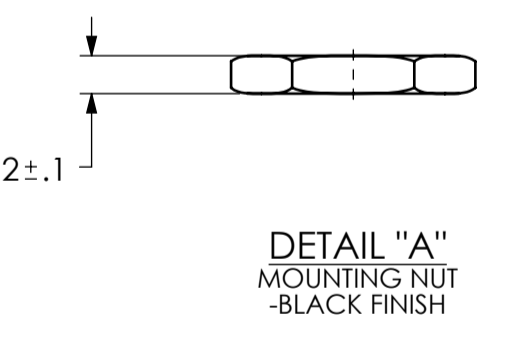
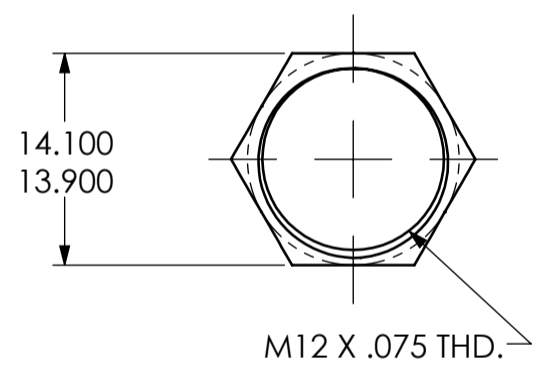
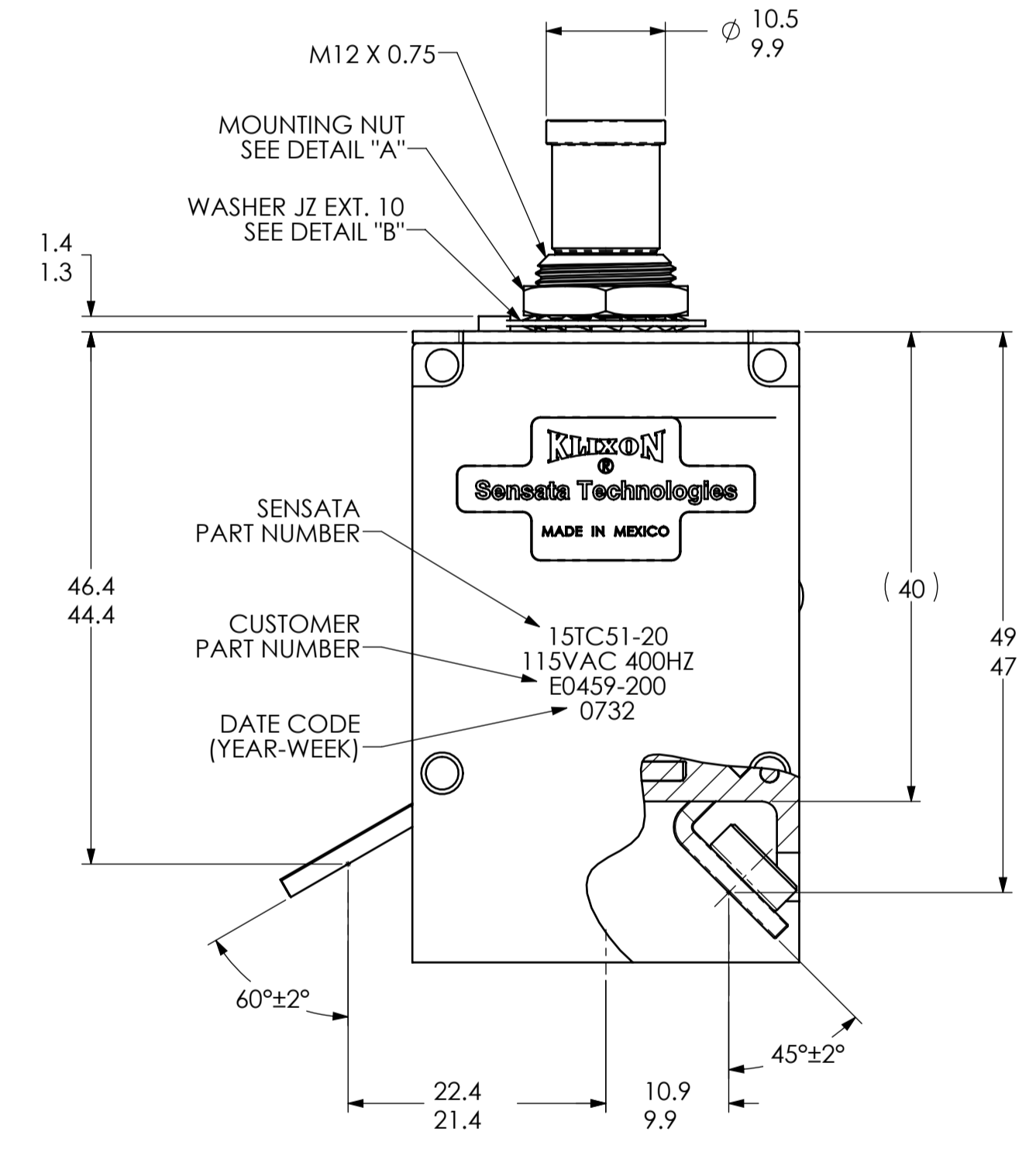
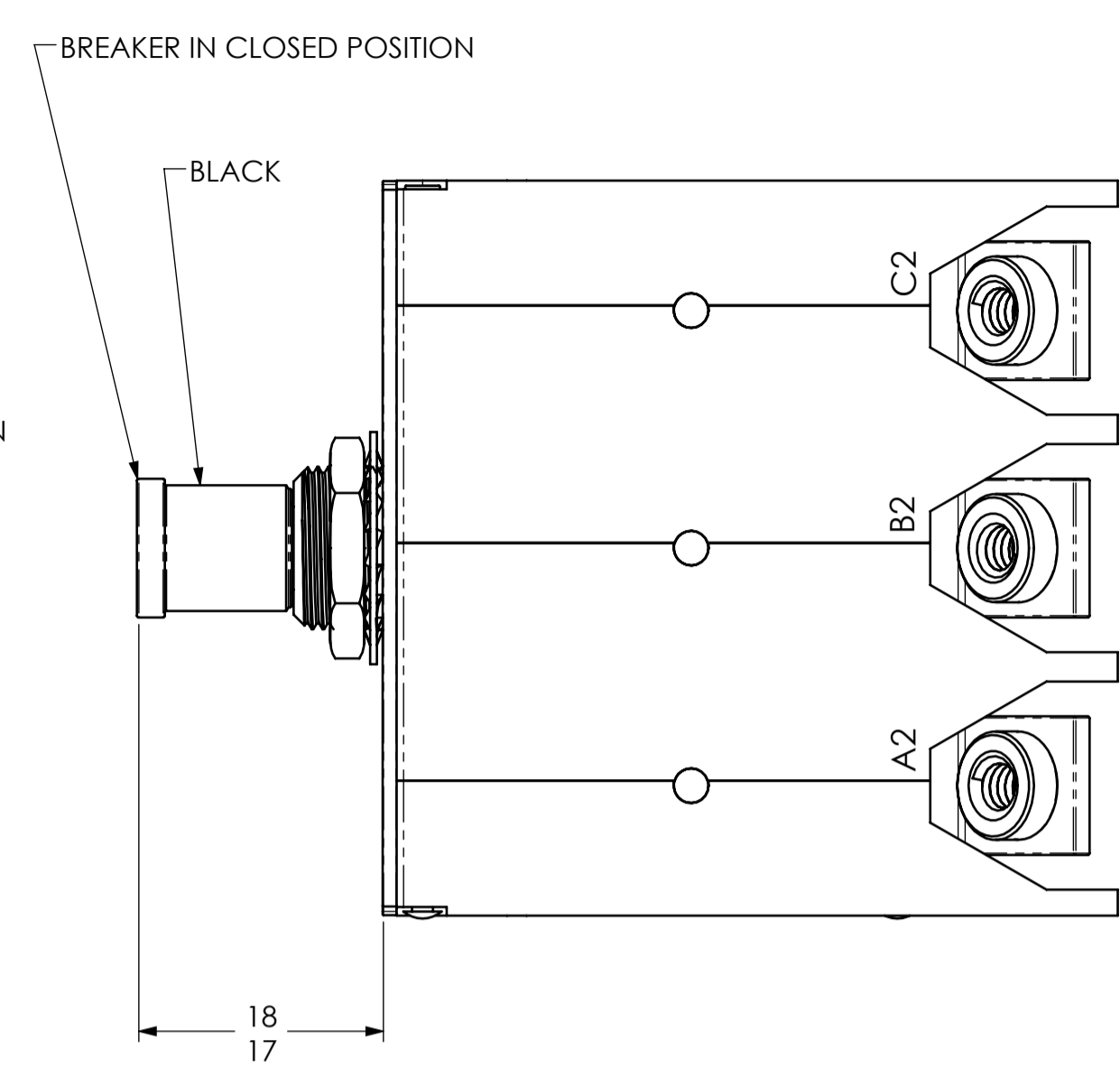
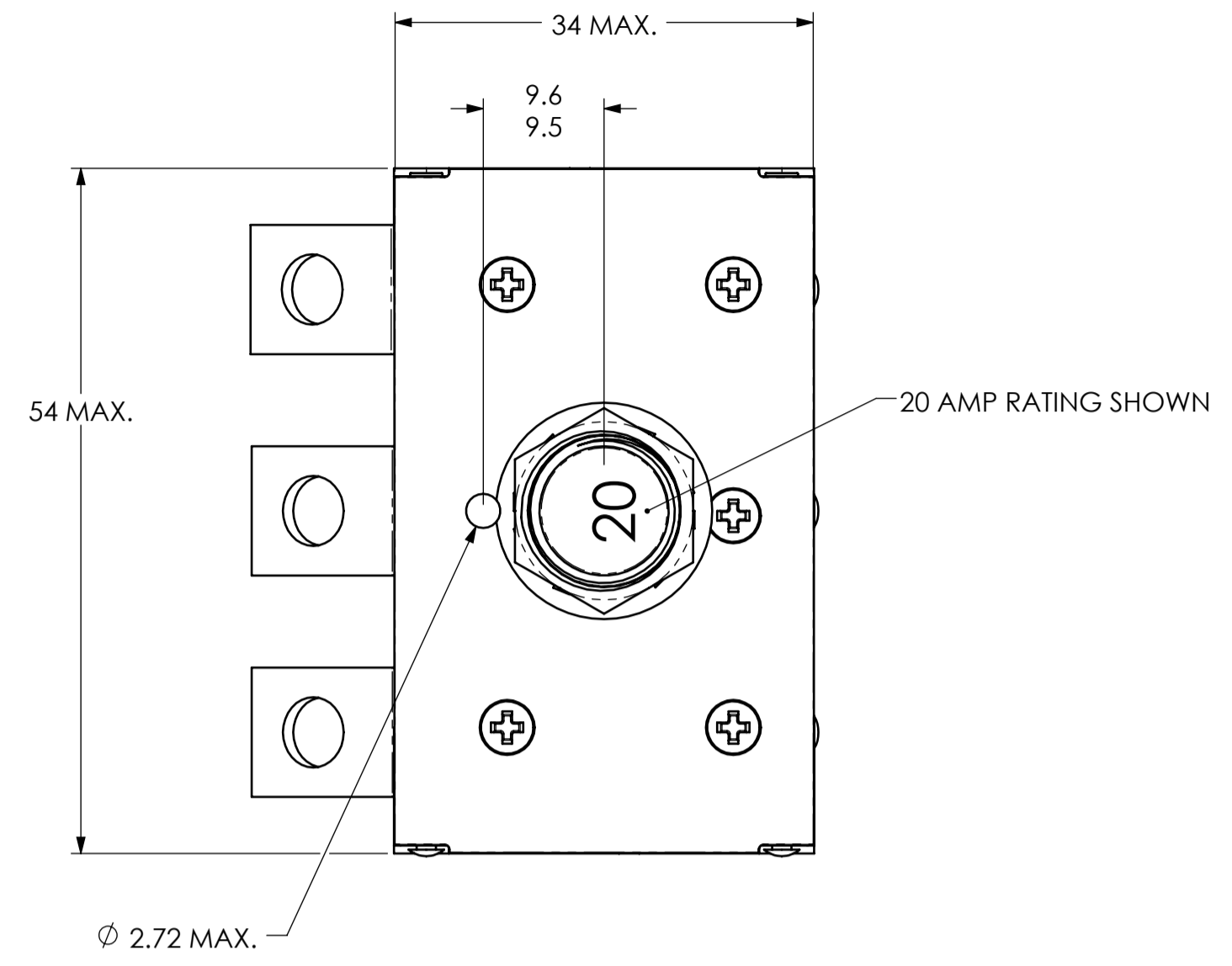
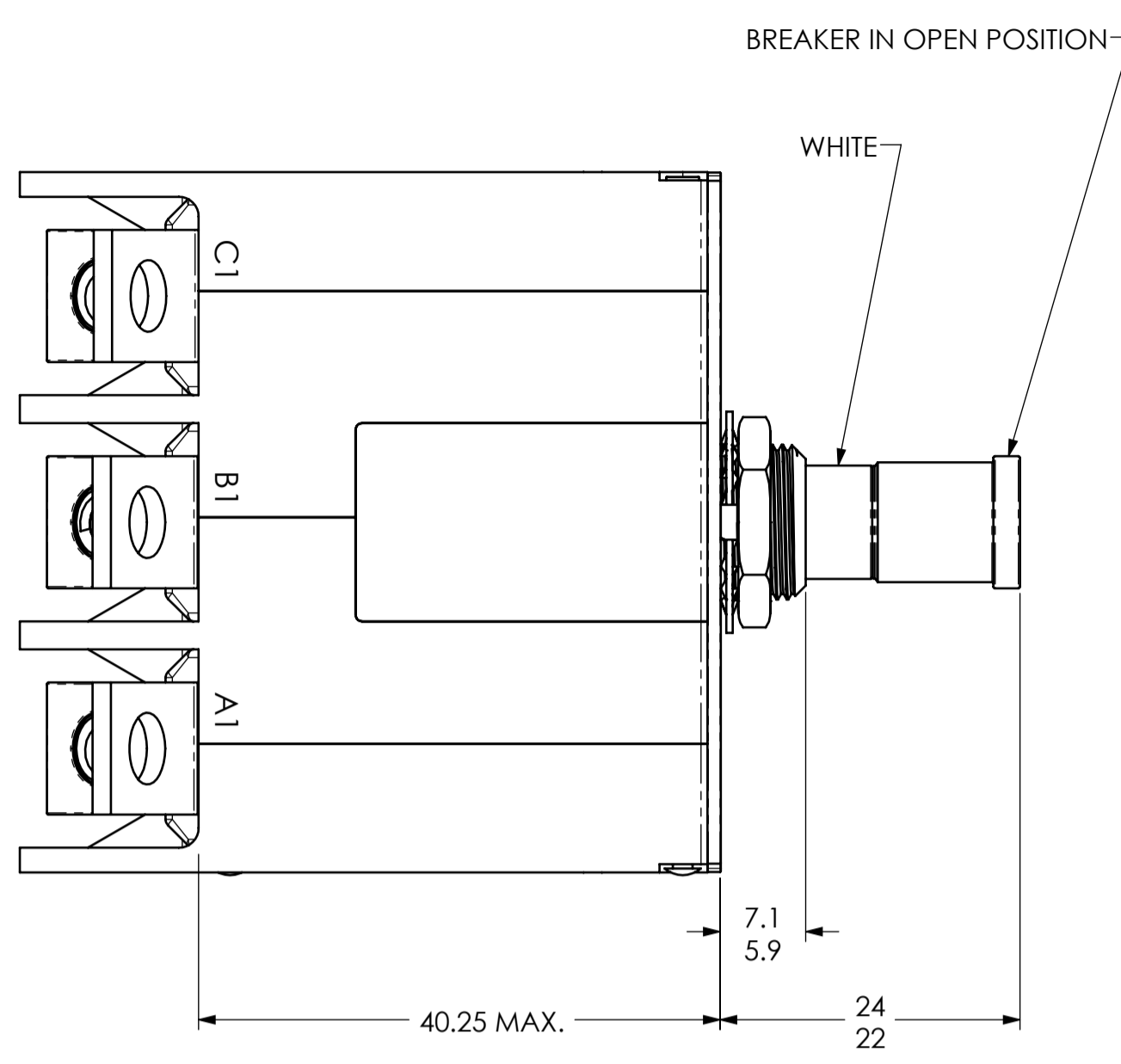
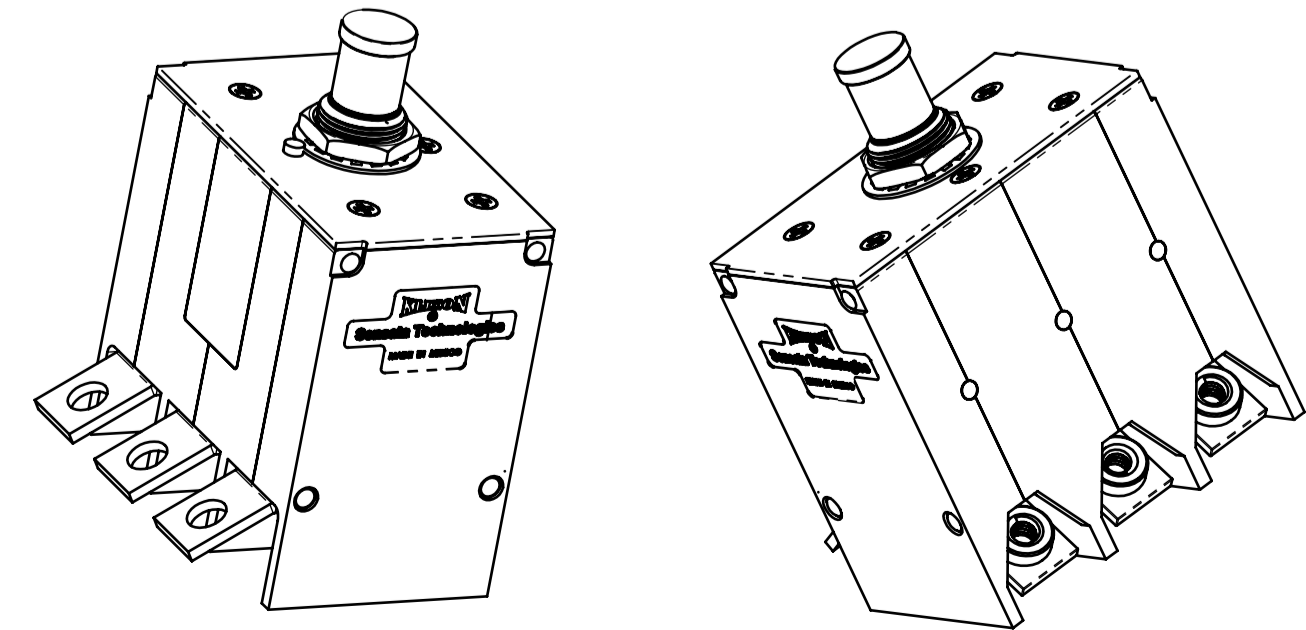
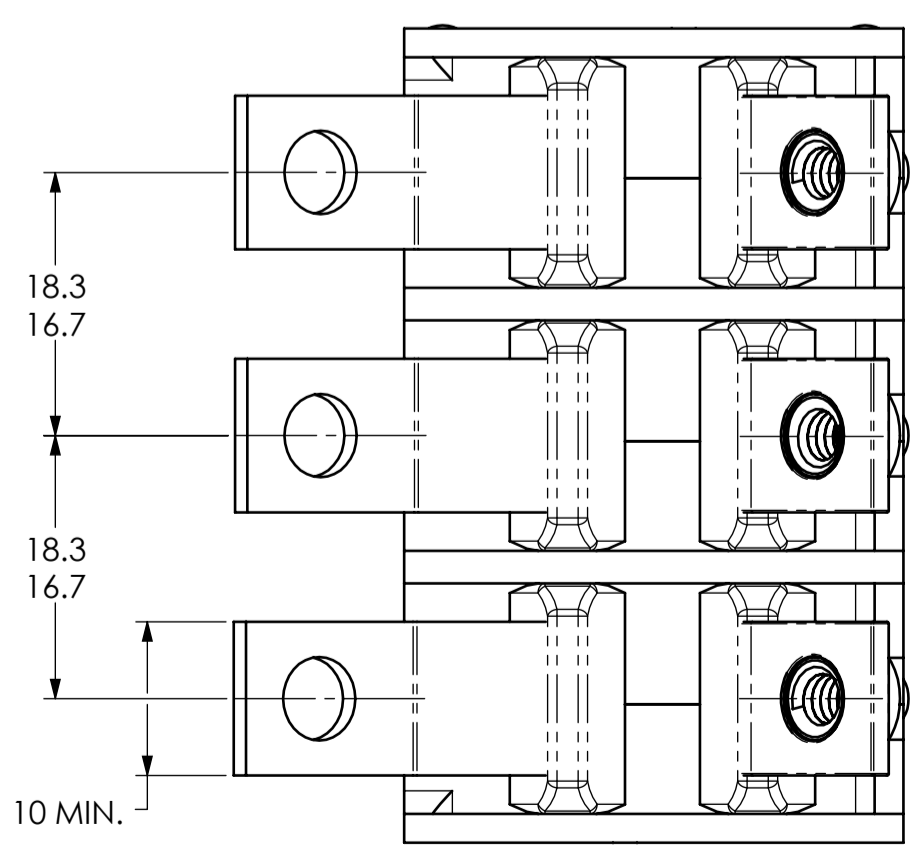


ZONE	REV.	REVISION DESCRIPTION	ECN NO.	DATE
B3	G	ADDED "30 AMP" ITEM TO VOLTAGE DROP;		
A2		ADDED "15TC51-30" TO SENSATA PART NO.;	ECO-110512	9-FEB-2015
		ADDED "E0459-300" TO CUSTOMER PART NO. WITH HARDWARE;		
		ADDED "E0459-300A" TO CUSTOMER PART NO. WITHOUT HARDWARE: JS		



DETAIL "B"
LOCKWASHER
EXT. Ø 12
-BLACK FINISH



PERFORMANCE CHARACTERISTICS
 DETAIL PERFORMANCE PER ASNE0459.
 VIBRATION CURVE 'J' OF EUROCAE ED-148, 3 G'S, 2000 HZ
 MECHANICAL SHOCK 50 G'S
 CORROSION SALT SPRAY 48 HOURS
 HUMIDITY 48 HOURS

ENDURANCE:

	115/200 VAC MECHANICAL	360-800 HZ INDUCTIVE NO LOAD	2500 CYCLES 5000 CYCLES
SINGLE * OR THREE PHASE CALIBRATION:	20 AMP THRU 50 AMP		
	MIN. ULT. TRIP	MAX. ULT. TRIP	200% (SEC.)
+25°C (+77°F)	110% RATING	145% RATING	2-27
+70°C (+158°F)	105% RATING	145% RATING	
+90°C (+194°F)	100% RATING	145% RATING	0.15-5.2
-55°C (-67°F)	110% RATING	165% RATING	0.05-1.3

SHORT CIRCUIT RESISTANCE:
 20 AMP THRU 50 AMP 115 VAC, 400 HZ 1500 AMPS RMS

OPERATIONAL FORCES:
 PULL OUT 5 - 45 N (1.1 - 10.1 LBS.)
 RESET 20 - 80 N (4.5 - 18 LBS.)

OPERATING ALTITUDE: 15,000 M (49,200 FT.)
 WEIGHT INCLUDING CONNECTION HARDWARE: 162.0 GRAMS MAX.
 140.0 GRAMS NOMINAL

VOLTAGE DROP:

20 AMP	0.150 VOLTS MAX.
25 AMP	0.150 VOLTS MAX.
30 AMP	0.150 VOLTS MAX.
35 AMP	0.150 VOLTS MAX.
40 AMP	0.150 VOLTS MAX.
50 AMP	0.150 VOLTS MAX.

* SINGLE PHASE MAXIMUM ULTIMATE TRIP VALUES APPLY WITH OTHER TWO PHASES CARRYING 100% OF RATED CURRENT.

SENSATA PART NO.	CUSTOMER PART NO. WITH HARDWARE	CUSTOMER PART NO. WITHOUT HARDWARE
15TC51-20	E0459-200	E0459-200 A
15TC51-25	E0459-250	E0459-250 A
15TC51-30	E0459-300	E0459-300 A
15TC51-35	E0459-350	E0459-350 A
15TC51-40	E0459-400	E0459-400 A
15TC51-50	E0459-501	E0459-501 A

FOR REFERENCE ONLY. CHECK LATEST REVISION BEFORE USE.
 PARTS MADE TO THIS PRINT MUST CONFORM TO E9898 REV. E.

DRAWN: G.LAPATI
 DATE: 11-JUL-2007

ENGINEER: W.BENTLEY
 DATE: 11-JUL-2007

APPROVED: A. NAULT
 DATE: 11-JUL-2007

APPROVED: P.BERG
 DATE: 11-JUL-2007

SENSATA TECHNOLOGIES PROPRIETARY AND CONFIDENTIAL. NEITHER THIS PRINT NOR THE INFORMATION CONTAINED HEREON IS TO BE USED AGAINST THE INTERESTS OF SENSATA TECHNOLOGIES OR AGAINST THE INTERESTS OF ANY OF ITS AFFILIATED COMPANIES OR WHOLLY OWNED SUBSIDIARIES.

INTERPRET DIMENSIONING AND TOLERANCING PER ASME Y14.5-2009. UNLESS OTHERWISE SPECIFIED DIMENSIONS ARE IN MILLIMETERS.

TOLERANCES: DECIMALS ANGLES

DO NOT SCALE DRAWING

THIRD ANGLE PROJECTION

SCALE: 2:1

SIZE: A1

DWG NO.: 15TC51

REV.: G

SCALE: 2:1

SOLIDWORKS

SHEET 1 OF 1

529 PLEASANT STREET
 P.O. BOX 2964
 ATTLEBORO, MA 02703

15TC51 CIRCUIT BREAKER
 PUSH PULL TRIP FREE
 ENVELOPE DRAWING

DEVICE: 15TC

PROJECT: EX3636