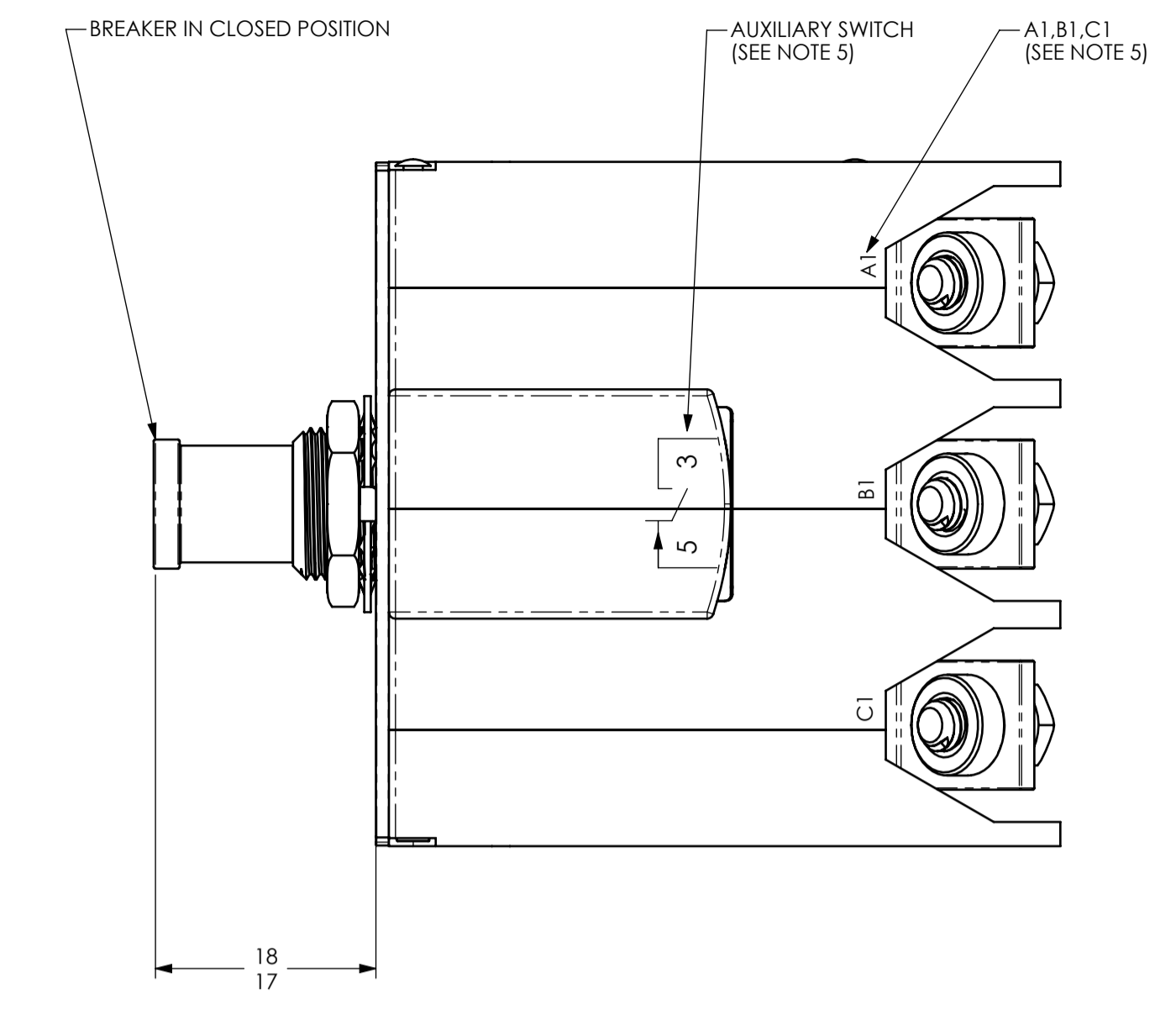
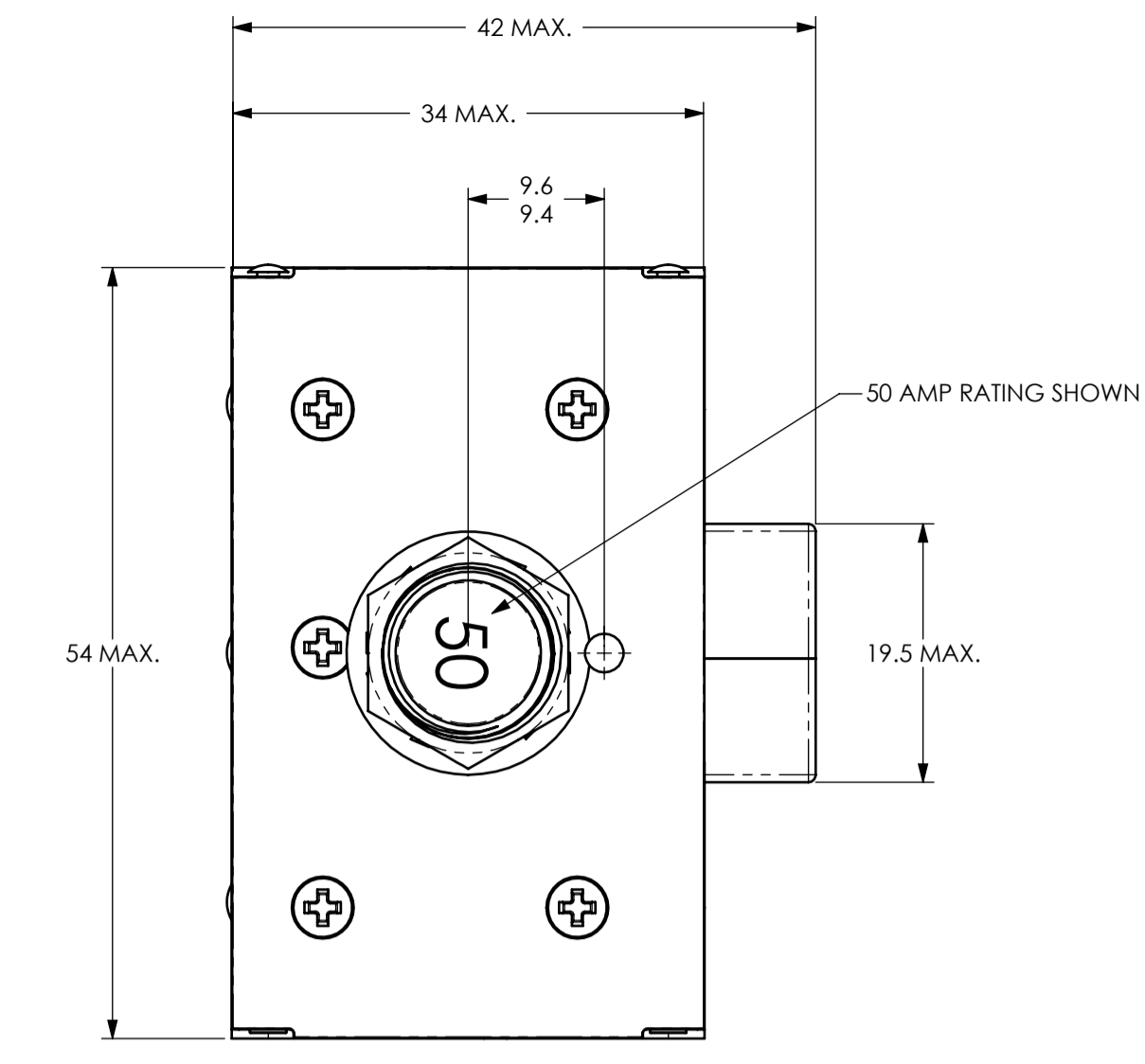
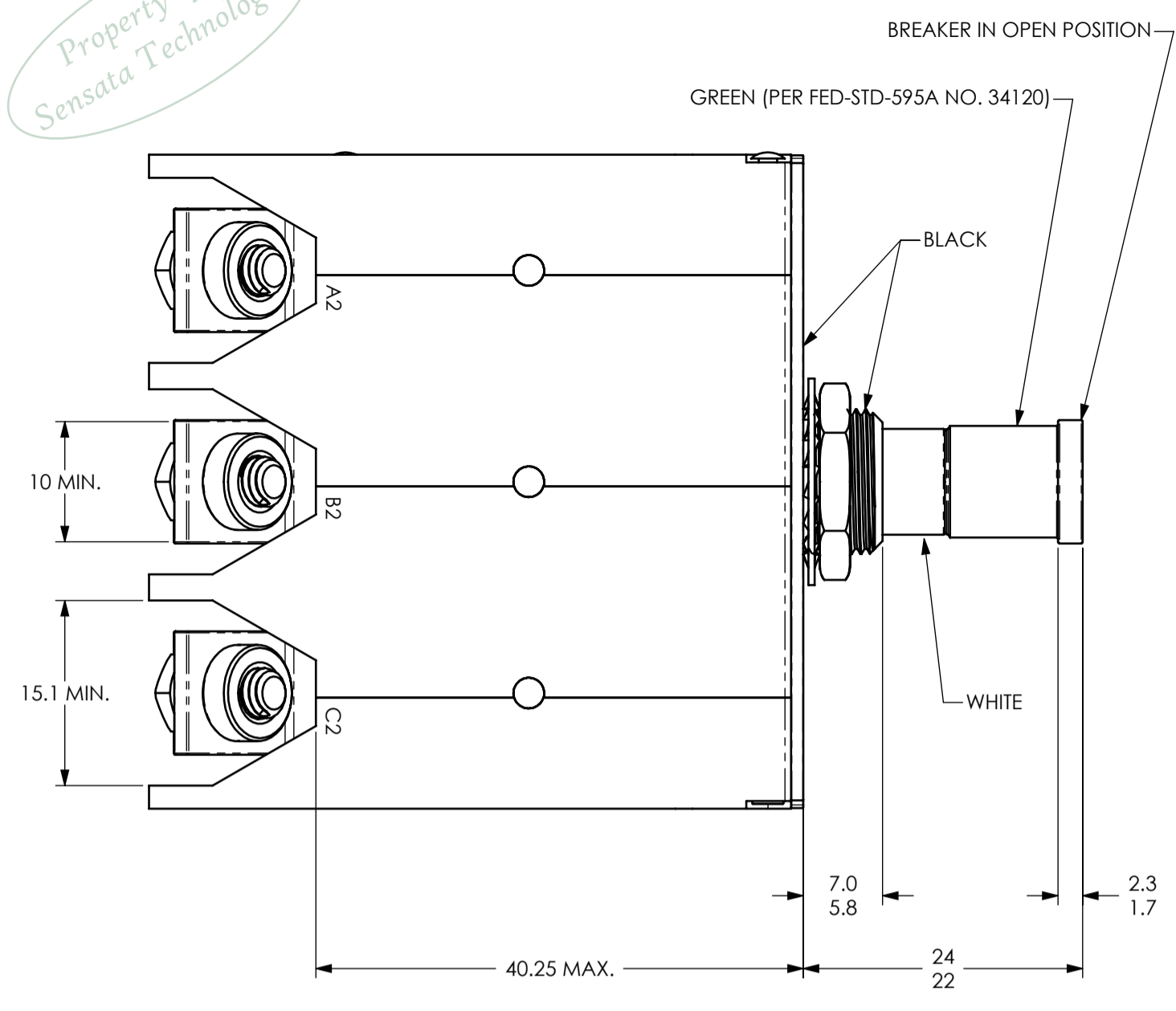


Property of
Sensata Technologies



ZONE	REV.	REVISION DESCRIPTION	ECN NO.	DATE
C5	P	DIM. 28MAX WAS MEASURED FROM THE BOTTOM OF THE SIDE CART TO THE MOUNTING FACE. ADDED NOTES; DT	ECO-116106	12-JUN-2015

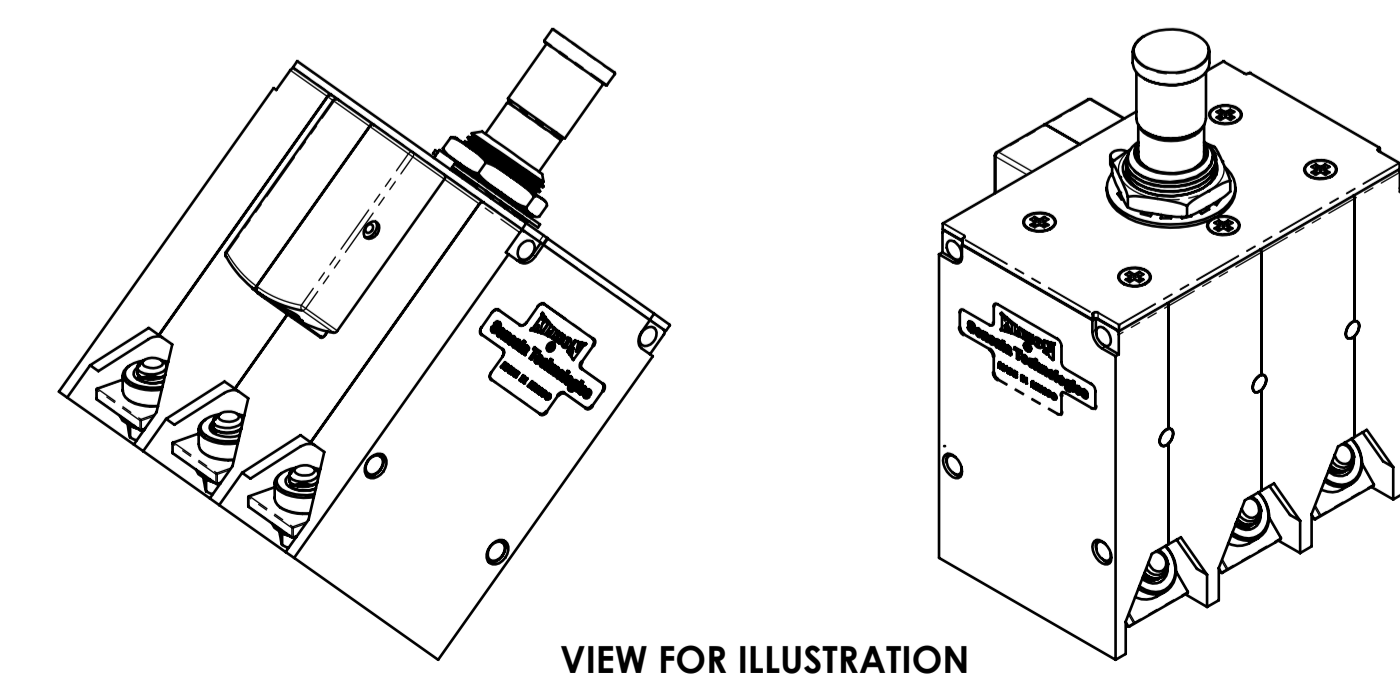
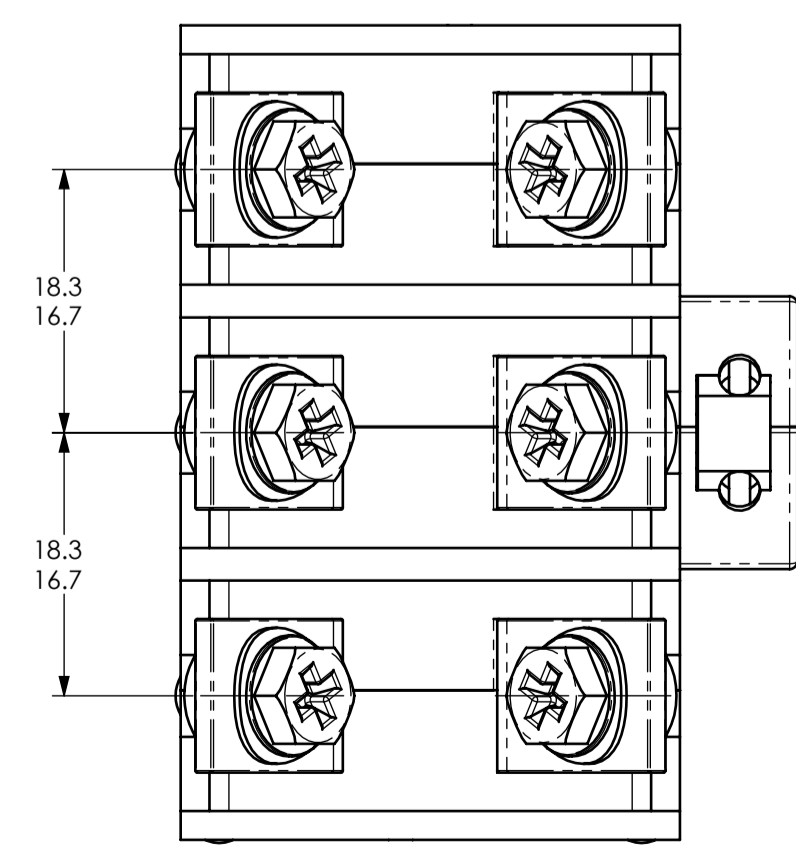
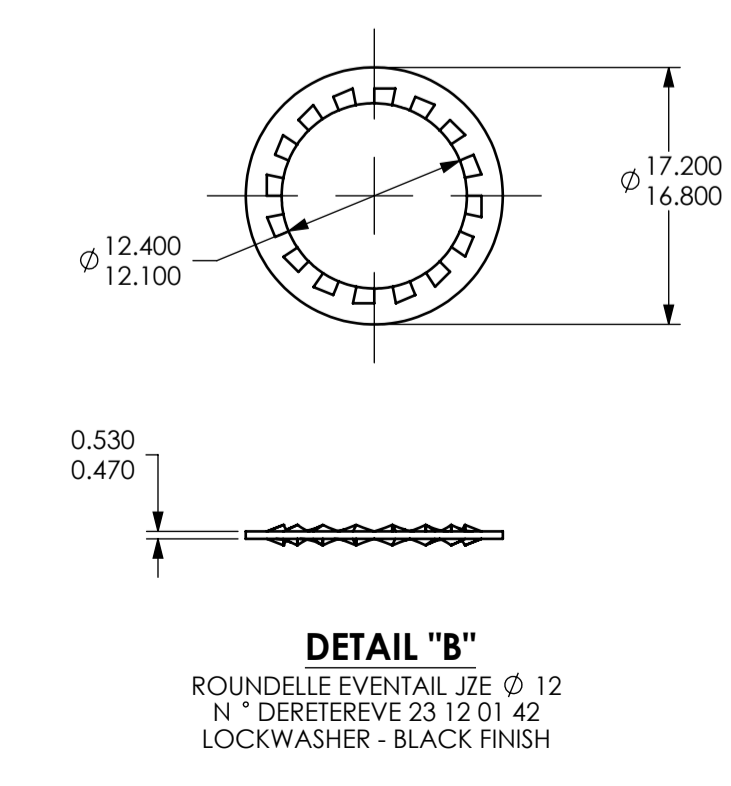
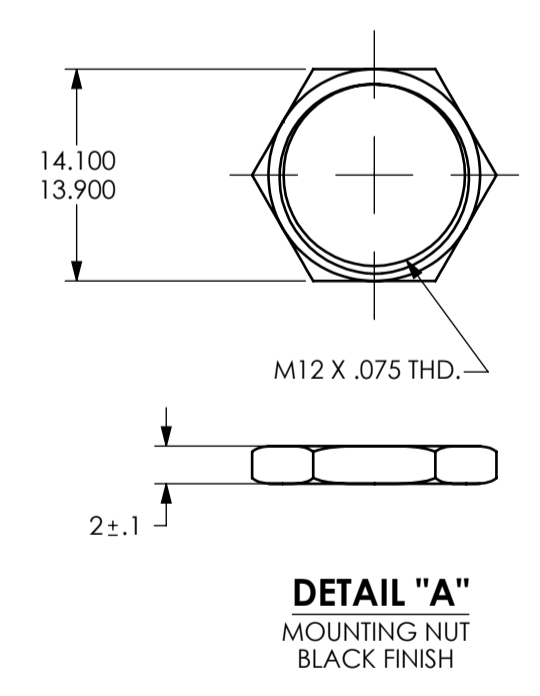
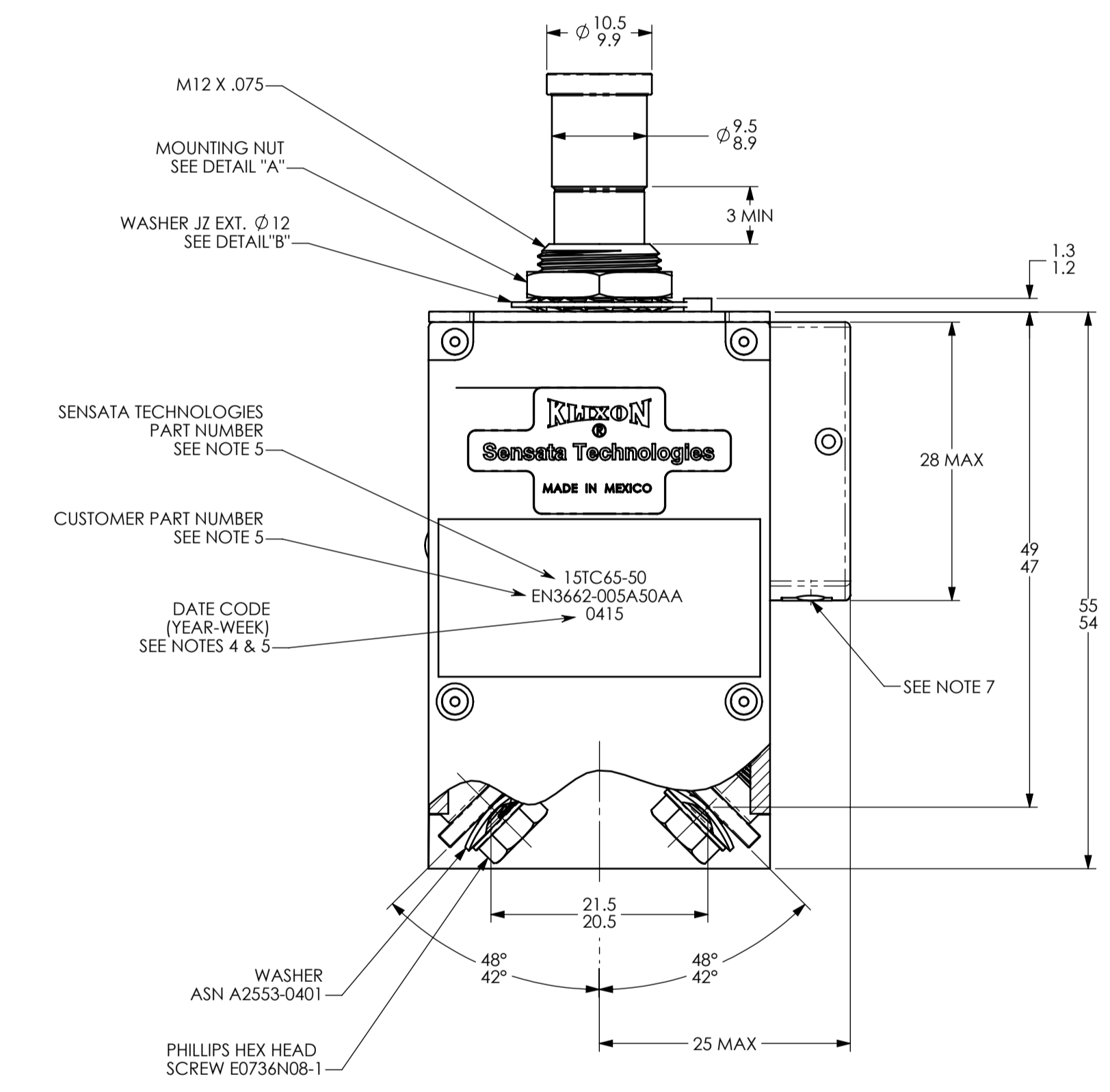
- NOTES:
- EPOXY SURFACES ARE NON-DIMENSIONED. ENVELOPE DIMENSIONS DO NOT APPLY TO THESE PROJECTED EPOXY SURFACES.
 - TERMINAL AND MOUNTING HARDWARE MAY BE PACKAGED RATHER THAN INSTALLED.
 - COUNTRY OF ORIGIN IS SHOWN FOR ILLUSTRATION PURPOSES ONLY. COUNTRY OF ORIGIN TO BE IDENTIFIED AS REQUIRED.
 - DATE CODE PER 10588-285.
 - MARK IN APPROXIMATE POSITION SHOWN IN BLACK INK PER 12504-70.
 - VOLUME = 2.6688 CUBIC INCHES.
 - RECOMMENDED PIN CONTACT: GAUGE 20 PER EN3155-016M2018 OR EQUIVALENT.

PERFORMANCE CHARACTERISTICS

DETAIL PERFORMANCE PER prEN3662-001 AND prEN3662-005.

	115 VAC MECHANICAL	360-800 HZ INDUCTIVE NO LOAD	2500 CYCLES 5000 CYCLES
SINGLE * OR THREE PHASE CALIBRATION:	20 AMP THRU 60 AMP	200% (SEC.) 3 POLES / 1 POLE 2-20 / 2-22	500% (SEC.) 3 POLES / 1 POLE 0.15-4.0 / 0.15-5.2
VIBRATION	CURVE 'J' OF EUROCAE ED-14B, 3 G'S, 2000 HZ		
MECHANICAL SHOCK	50 G'S		
CORROSION	SALT SPRAY 48 HOURS		
HUMIDITY	48 HOURS		
MIN. ULT. TRIP	110% RATING	145% RATING	1000% (SEC.) 3 POLES / 1 POLE 0.05-1.0 / 0.06-1.3
MAX. ULT. TRIP	105% RATING	145% RATING	3 POLES / 1 POLE 0.15-4.0 / 0.15-5.2
TEMPERATURE RANGES	+23°C (+73°F) 110% RATING +70°C (+158°F) 105% RATING +90°C (+194°F) 100% RATING -55°C (-67°F) 110% RATING	145% RATING 145% RATING 145% RATING 165% RATING	1000% (SEC.) 3 POLES / 1 POLE 0.05-1.0 / 0.06-1.3
SHORT CIRCUIT RESISTANCE:	20 AMP THRU 60 AMP	115 VAC, 400 HZ	2000 AMPS RMS
OPERATIONAL FORCES:	PULL OUT 5 - 45 N (1.1 - 10.1 LBS.) RESET 20 - 80 N (4.5 - 18 LBS.)		
OPERATING ALTITUDE:	15,000 M (49,200 FT.)		
WEIGHT INCLUDING CONNECTION HARDWARE:	185.0 GRAMS (0.386 LBS.) MAX. 140.0 GRAMS (0.287 LBS.) NOMINAL		
VOLTAGE DROP:	20 AMP 0.150 VOLTS MAX. 25 AMP 0.150 VOLTS MAX. 30 AMP 0.150 VOLTS MAX. 35 AMP 0.150 VOLTS MAX. 40 AMP 0.120 VOLTS MAX. 50 AMP 0.120 VOLTS MAX. 60 AMP 0.120 VOLTS MAX.		

* SINGLE PHASE MAXIMUM ULTIMATE TRIP VALUES APPLY WITH OTHER TWO PHASES CARRYING 100% OF RATED CURRENT.



SENSATA TECHNOLOGIES PART NO.	CUSTOMER PART NO. WITH TERMINAL HARDWARE	CUSTOMER PART NO. WITHOUT TERMINAL HARDWARE
15TC65-20	EN3662-005A20AA	EN3662-005A20AB
15TC65-25	EN3662-005A25AA	EN3662-005A25AB
15TC65-30	EN3662-005A30AA	EN3662-005A30AB
15TC65-35	EN3662-005A35AA	EN3662-005A35AB
15TC65-40	EN3662-005A40AA	EN3662-005A40AB
15TC65-50	EN3662-005A50AA	EN3662-005A50AB
15TC65-60		

FOR REFERENCE ONLY. CHECK LATEST REVISION BEFORE USE. PARTS MADE TO THIS PRINT MUST CONFORM TO E9898 REV. E.

DRAWN: WILLIAM BENTLEY/DP
DATE: 28-JUN-2004
ENGINEER: WILLIAM BENTLEY
DATE: 28-JUN-2004
APPROVED: RICK FERNANDES
DATE: 28-JUN-2004
APPROVED: CARL REGALADO
DATE: 28-JUN-2004

SENSATA TECHNOLOGIES PROPRIETARY AND CONFIDENTIAL. NEITHER THIS PRINT NOR THE INFORMATION CONTAINED HEREON IS TO BE USED AGAINST THE INTERESTS OF SENSATA TECHNOLOGIES OR AGAINST THE INTERESTS OF ANY OF ITS AFFILIATED COMPANIES OR WHOLLY OWNED SUBSIDIARIES.

UNLESS OTHERWISE SPECIFIED DIMENSIONS ARE IN MILLIMETERS
TOLERANCES: DECIMALS ANGLES

DO NOT SCALE DRAWING
THIRD ANGLE PROJECTION

529 PLEASANT STREET
P.O. BOX 2964
ATTLEBORO, MA 02703

Sensata Technologies

TITLE: 15TC CIRCUIT BREAKER PUSH PULL TRIP FREE ENVELOPE DRAWING

SIZE: A1 DWG NO.: 15TC65 REV.: P

SCALE: 1:1 SOLIDWORKS SHEET 1 OF 1

DEVICE: 15TC65 PROJECT: EX3636