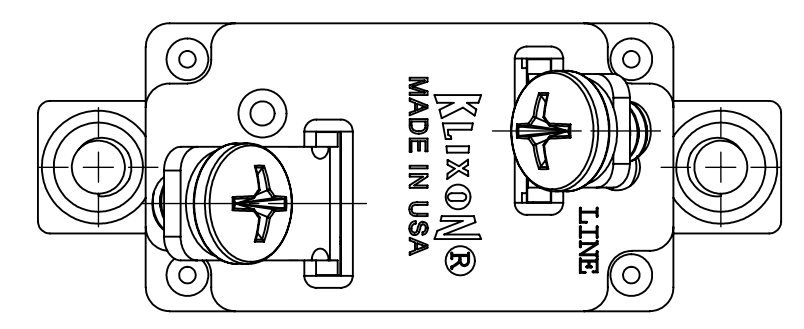
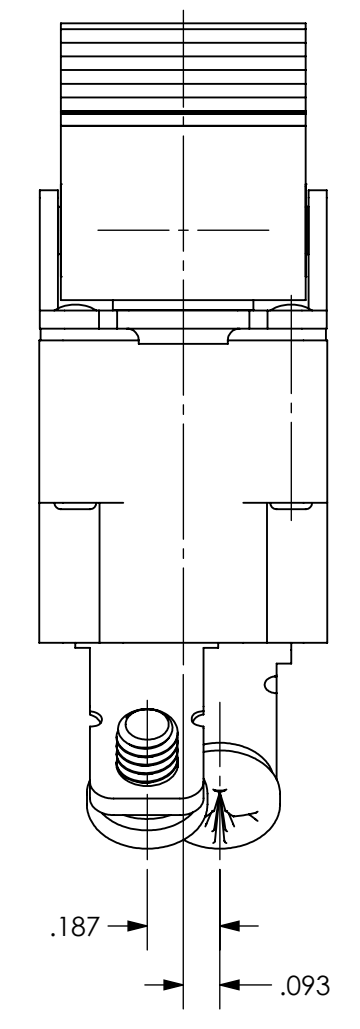
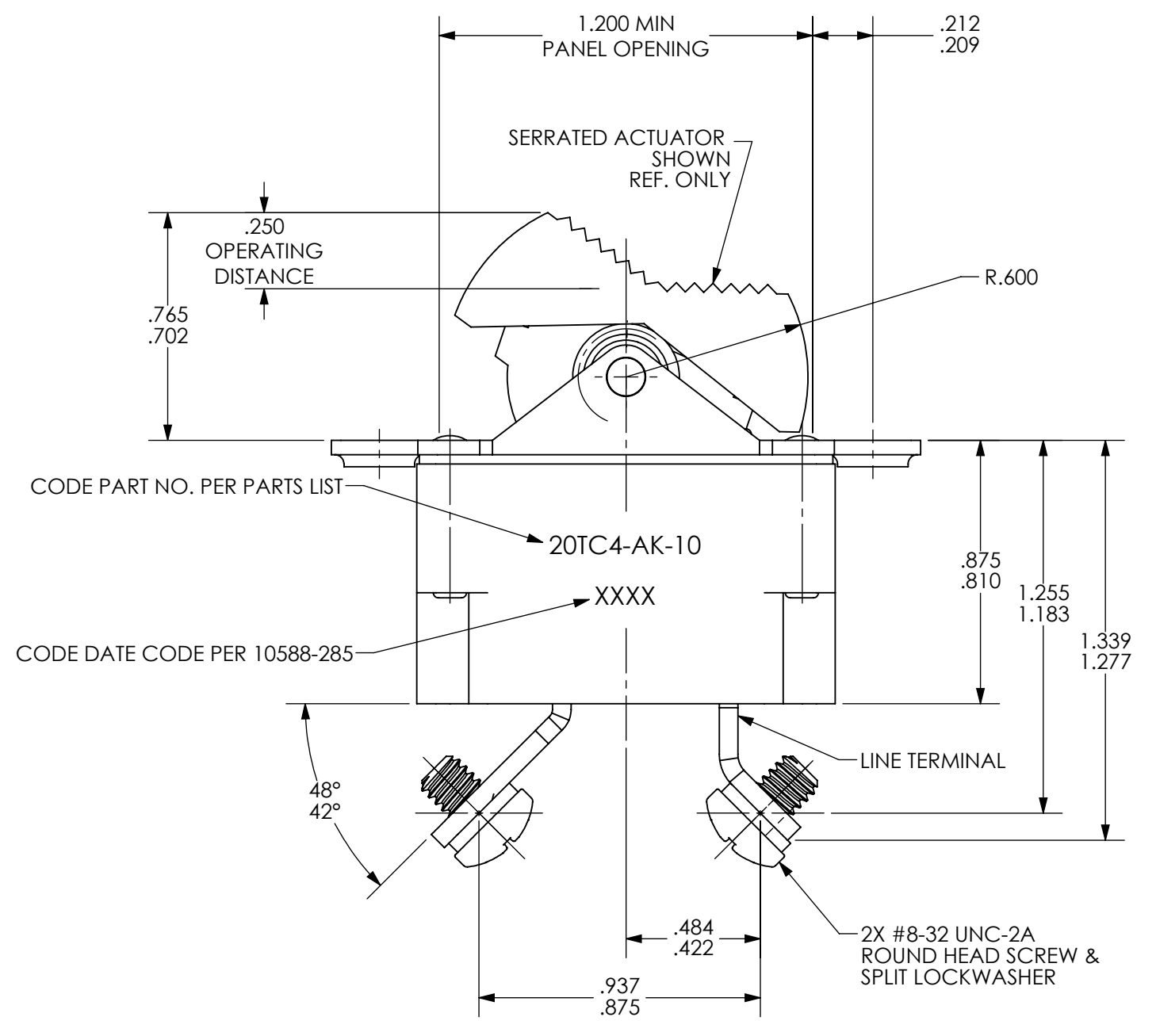
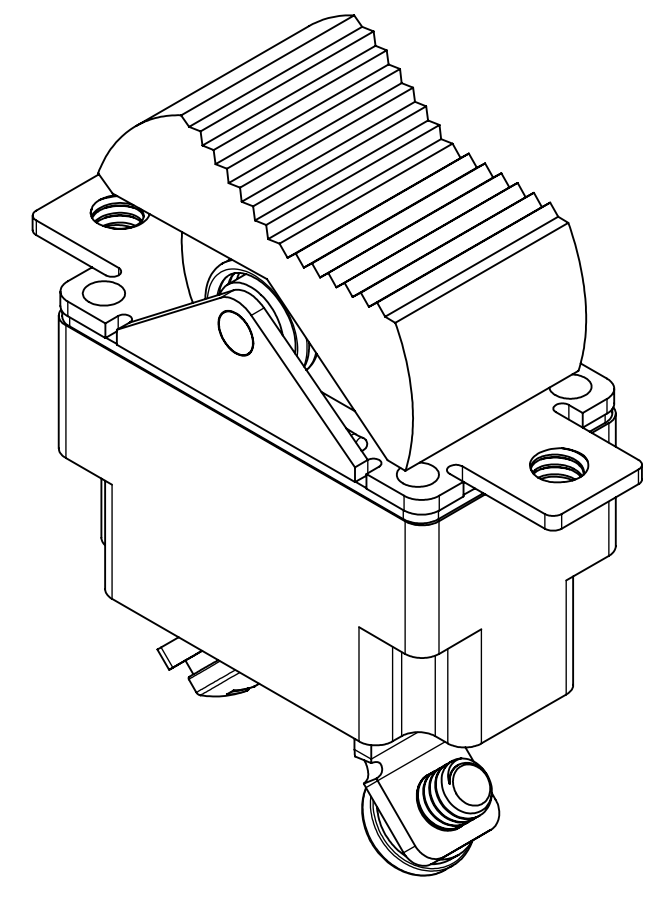
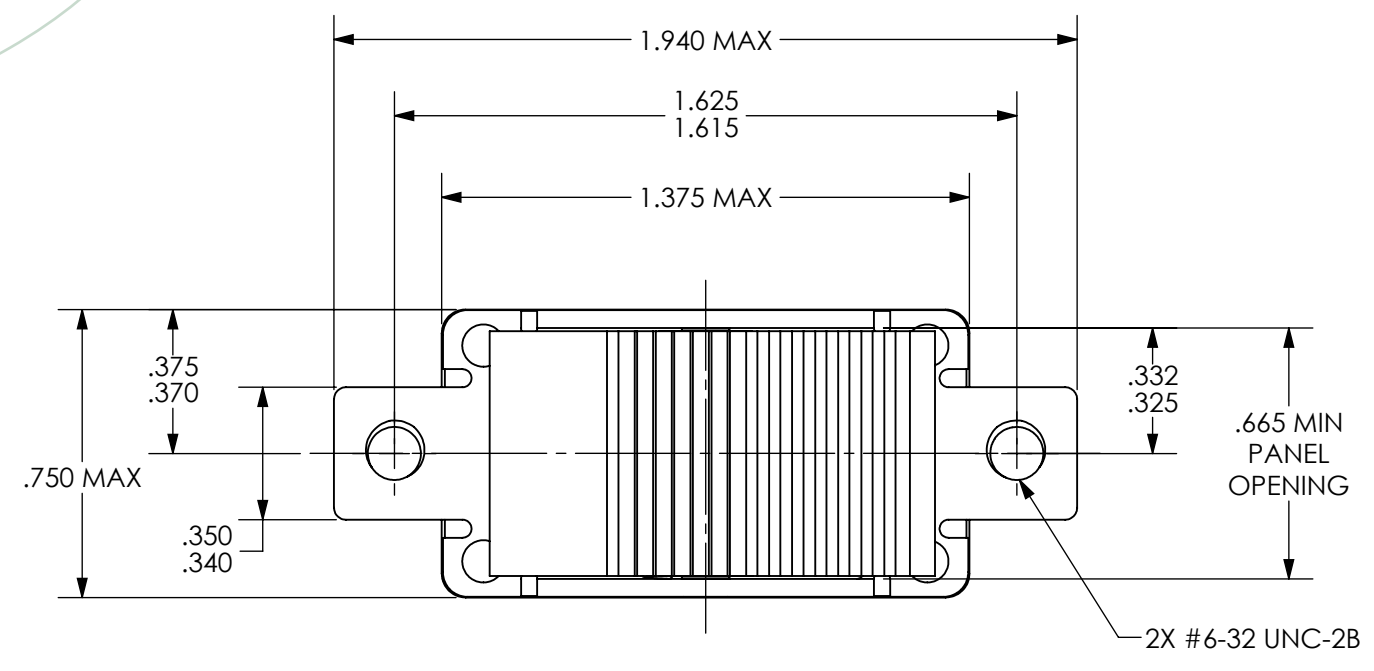


Property of
Sensata Technologies



ZONE	REV.	REVISION DESCRIPTION	ECN NO.	DATE
A1	F	RE-DOCUMENTED IN SOLIDWORKS; ADDED GENERIC TOLERANCE IN TITLE BLOCK; GML	ECO-087597	13-MAY-2013

(DETAIL PERFORMANCE PER MIL-C-5809)

OVERLOAD CYCLING-----100 CYCLES AT 200% RATING
VIBRATION-----10 G'S MINIMUM 50-500 CPS

MECHANICAL SHOCK-----25 G'S 11.5 MILLISECONDS DURATION
ACCELERATION-----10 G'S MINIMUM
CORROSION-----SALT SPRAY 50 HOURS
HUMIDITY-----10 DAYS
EXPLOSION PROOF-----WHILE INTERRUPTING RUPTURE CURRENT
OPERATING ALTITUDE:-----70,000 FT.

VOLTAGE DROP-----3 AMP RATING .75 VOLTS
5 AMP RATING .65 VOLTS
7 1/2 AMP - 35 AMP RATING .50 VOLTS

ENDURANCE:
120 VAC-----60-400 CPS, INDUCTIVE -----5000 CYCLES
RESISTIVE -----5000 CYCLES
30 VDC-----INDUCTIVE -----2500 CYCLES
RESISTIVE -----5000 CYCLES
MECHANICAL-----10000 CYCLES

TEST	CIRCUIT BKR RATING	PERCENT RATED CURRENT	AMB TEMP.	TRIP TIME HOLD
MIN. ULT. TRIP	3-35	110	25°C	
MAX. ULT. TRIP	3-35	150	25°C	1 HR. MAX.
200% TIME	3-35	200	25°C	10-130 SEC.

RUPTURE:
3 AMP THRU 35 AMP
120 VAC, 400 C'S, 1000-AMPS
30 VDC, 2000 AMPS

MAXIMUM OPERATING FORCES:
"ON" POSITION-----10 LBS. MAX.
"OFF" POSITION-----10 LBS. MAX.

PART NO.	AMP RATING
20TC4-3	3
20TC4-5	5
20TC4-7 1/2	7 1/2
20TC4-10	10
20TC4-15	15
20TC4-20	20
20TC4-25	25
20TC4-30	30
20TC4-35	35

FOR REFERENCE ONLY, CHECK LATEST REVISION BEFORE USE. PARTS MADE TO THIS PRINT MUST CONFORM TO E9898 REV. E.		529 PLEASANT STREET P.O. BOX 2964 ATTLEBORO, MA 02703	
DRAWN J.PEARSON DATE 05-JUN-1969 ENGINEER B.FOLEY DATE 06-JUN-1969 APPROVED DATE APPROVED DATE	SENSATA TECHNOLOGIES PROPRIETARY AND CONFIDENTIAL. NEITHER THIS PRINT NOR THE INFORMATION CONTAINED HEREON IS TO BE USED AGAINST THE INTERESTS OF SENSATA TECHNOLOGIES OR AGAINST THE INTERESTS OF ANY OF ITS AFFILIATED COMPANIES OR WHOLLY OWNED SUBSIDIARIES. INTERPRET DIMENSIONING AND TOLERANCING PER ASME Y14.5-2009. UNLESS OTHERWISE SPECIFIED DIMENSIONS ARE IN INCHES. TOLERANCES DECIMALS ANGLES X.XXX ±.031 X° ± 3°		TITLE ROCKER ACTUATED CIRCUIT BREAKER ENVELOPE DRAWING SIZE DWG NO. C 20TC4 REV. F
DO NOT SCALE DRAWING	THIRD ANGLE PROJECTION	SCALE 2:1	SOLIDWORKS SHEET 1 OF 1