

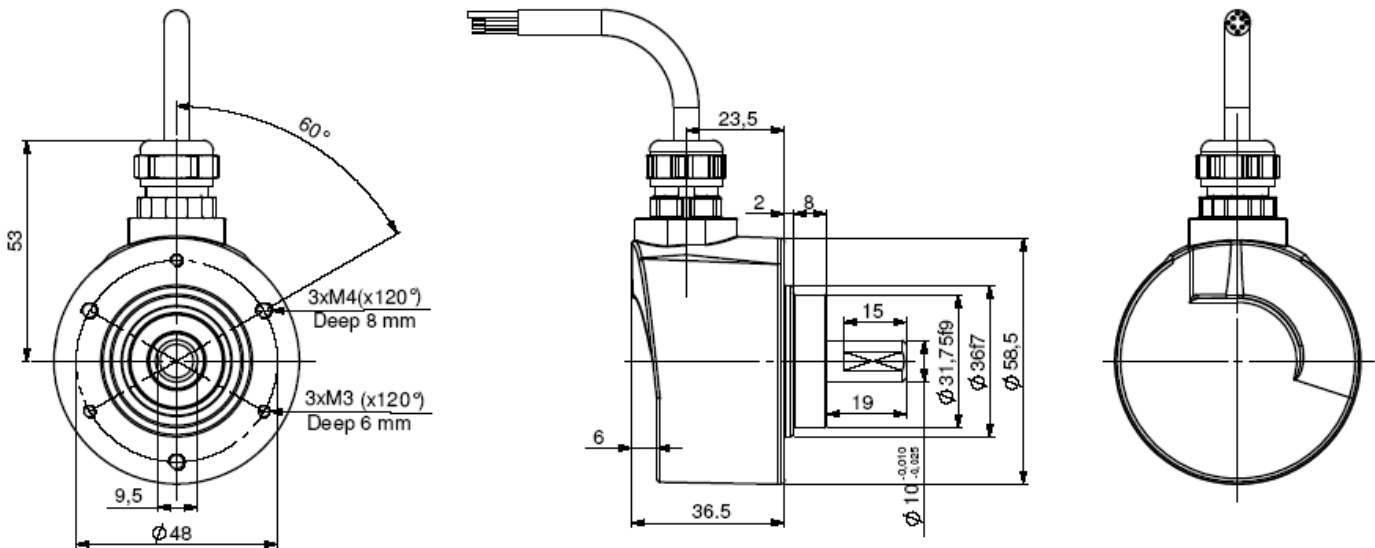
ABSOLUTE SINGLE TURN ENCODER - CAM OUTPUTS

CHM5, absolute single turn encoders with cam outputs:

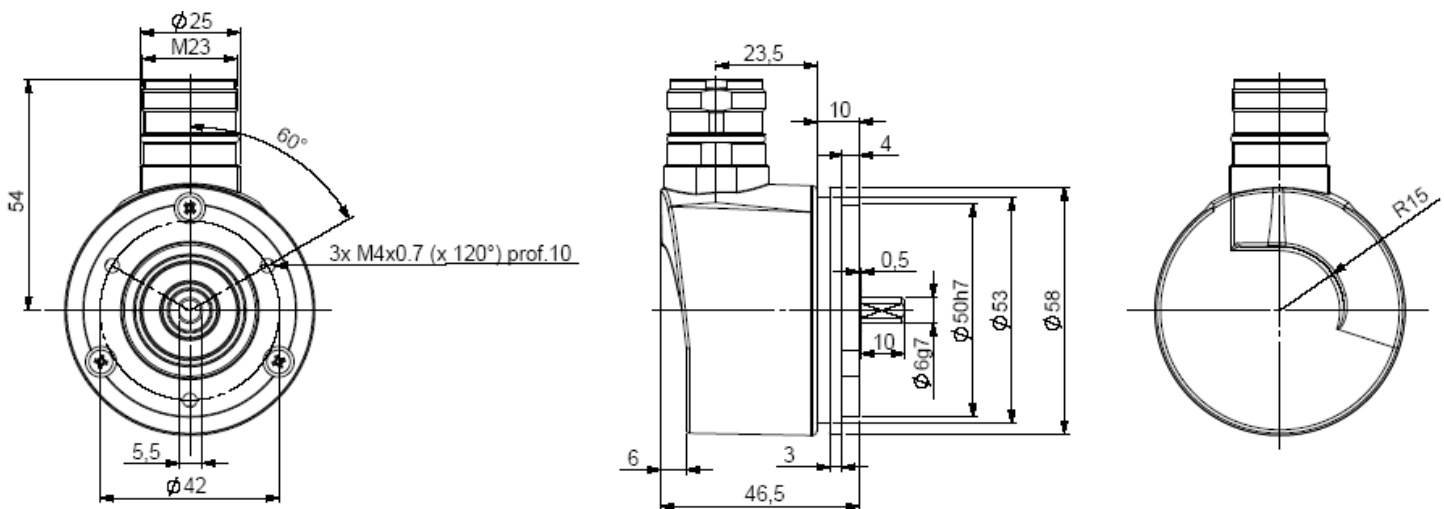
- Robustness and excellent resistance to shocks / vibrations,
- High protection level IP65, IP67 option with a sealing flange,
- Universal electronic circuits from 5 to 30 Vdc,
- Push-pull output,
- Max. 13 cams outputs,
- High performances in temperature -20°C to 70°C ,



CHM5_10 radial cable



CHM5_06 radial M23 - flange 9500/003* mounted on the body



*Accessory to be ordered separately

ABSOLUTE SINGLE TURN ENCODER - CAM OUTPUTS

MECHANICAL CHARACTERISTICS

Material	Cover : zinc alloy
	Body: aluminium 5083
	Shaft : stainless steel
Bearings	6 000 serie
Maximal loads	Axial : 50 N
	Radial : 100 N
Shaft inertia	$\leq 1.10^{-6}$ kg.m ²
Torque	$\leq 4.10^{-3}$ N.m

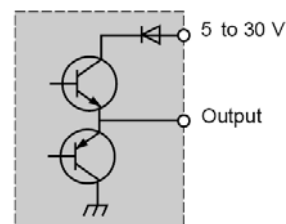
Permissible max. speed	12 000 min ⁻¹
Continuous max. speed	9 000 min ⁻¹
Shocks (EN60068-2-27)	≤ 500 m.s ⁻² (during 6 ms)
Vibrations (EN60068-2-6)	≤ 100 m.s ⁻² (10 ... 2 000 Hz)
Encoder weight (approx.)	0,450 kg
Operating temperature	- 20 ... + 70 °C (encoder T°)
Storage temperature	- 40 ... + 70 °C
Protection(EN 60529)	IP 65

CONNECTION

Pin	color	Functions
1	white WH	0V
2	brown BN	+Vcc
3	green GN	C0
4	yellow YE	C1
5	grey GY	C2
6	pink PK	C3
7	blue BU	C4
8	red RD	C5
9	black BK	C6
10	violet VT	C7
11	white/brown WH/BN	C8
12	white/green WH/GN	C9
13	white/yellow WH/YE	C10
14	white/grey WH/GY	C11
15	white/pink WH/PK	C12
16	white/blue WH/BU	NC

ELECTRONIC

Supply: 5 to 30 V c
Max. ripple: 500 mV
Protection against reverse polarity
Max. no-load consumption: 100 mA
Max. current: 20 mA
Level "0" max.: 0.5 V
Level "1" min.: V supply - 2.5 V
Protection against short-circuits
NPN/PNP compatible

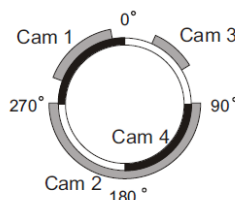


OUTPUT SIGNALS

Programming of the cams will be done in our factory in function of needed characteristics.

Example:

Cams	Switchpoints	
	On	Off
C0	290° on	350° off
C1	90° on	270° off
C2	30° on	60° off
C3	90° on	180° off
C4	270° on	0° off



Made in FRANCE

Datasheets provided by Sensata Technologies, Inc., its subsidiaries and/or affiliates (“Sensata”) are solely intended to assist third parties (“Buyers”) who are developing systems that incorporate Sensata products (also referred to herein as “components”). Buyer understands and agrees that Buyer remains responsible for using its independent analysis, valuation, and judgment in designing Buyer’s systems and products. Sensata datasheets have been created using standard laboratory conditions and engineering practices. Sensata has not conducted any testing other than that specifically described in the published documentation for a particular datasheet. Sensata may make corrections, enhancements, improvements, and other changes to its datasheets or components without notice.

Buyers are authorized to use Sensata datasheets with the Sensata component(s) identified in each particular datasheet. HOWEVER, NO OTHER LICENSE, EXPRESS OR IMPLIED, BY ESTOPPEL OR OTHERWISE TO ANY OTHER SENSATA INTELLECTUAL PROPERTY RIGHT, AND NO LICENSE TO ANY THIRD PARTY TECHNOLOGY OR INTELLECTUAL PROPERTY RIGHT, IS GRANTED HEREIN. SENSATA DATASHEETS ARE PROVIDED “AS IS”. SENSATA MAKES NO WARRANTIES OR REPRESENTATIONS WITH REGARD TO THE DATASHEETS OR USE OF THE DATASHEETS, EXPRESS, IMPLIED, OR STATUTORY, INCLUDING ACCURACY OR COMPLETENESS. SENSATA DISCLAIMS ANY WARRANTY OF TITLE AND ANY IMPLIED WARRANTIES OF MERCHANTABILITY, FITNESS FOR A PARTICULAR PURPOSE, QUIET ENJOYMENT, QUIET POSSESSION, AND NON-INFRINGEMENT OF ANY THIRD PARTY INTELLECTUAL PROPERTY RIGHTS WITH REGARD TO SENSATA DATASHEETS OR USE THEREOF.

All products are sold subject to Sensata’s terms and conditions of sale supplied at www.sensata.com. SENSATA ASSUMES NO LIABILITY FOR APPLICATIONS ASSISTANCE OR THE DESIGN OF BUYERS’ PRODUCTS. BUYER ACKNOWLEDGES AND AGREES THAT IT IS SOLELY RESPONSIBLE FOR COMPLIANCE WITH ALL LEGAL, REGULATORY, AND SAFETY-RELATED REQUIREMENTS CONCERNING ITS PRODUCTS, AND ANY USE OF SENSATA COMPONENTS IN ITS APPLICATIONS, NOTWITHSTANDING ANY APPLICATIONS-RELATED INFORMATION OR SUPPORT THAT MAY BE PROVIDED BY SENSATA.

Mailing Address: Sensata Technologies, Inc., 529 Pleasant Street, Attleboro, MA 02703, USA

CONTACT US

Regional head offices:

United States of America

Sensata Technologies

Attleboro, MA

Phone: 508-236-3800

E-mail: support@sensata.com

Netherlands

Sensata Technologies Holland B.V.

Hengelo

Phone: +31 74 357 8000

E-mail: support@sensata.com

China

Sensata Technologies China Co., Ltd.

Shanghai

Phone: +8621 2306 1500

E-mail: support@sensata.com

Copyright © 2023 Sensata Technologies, Inc.