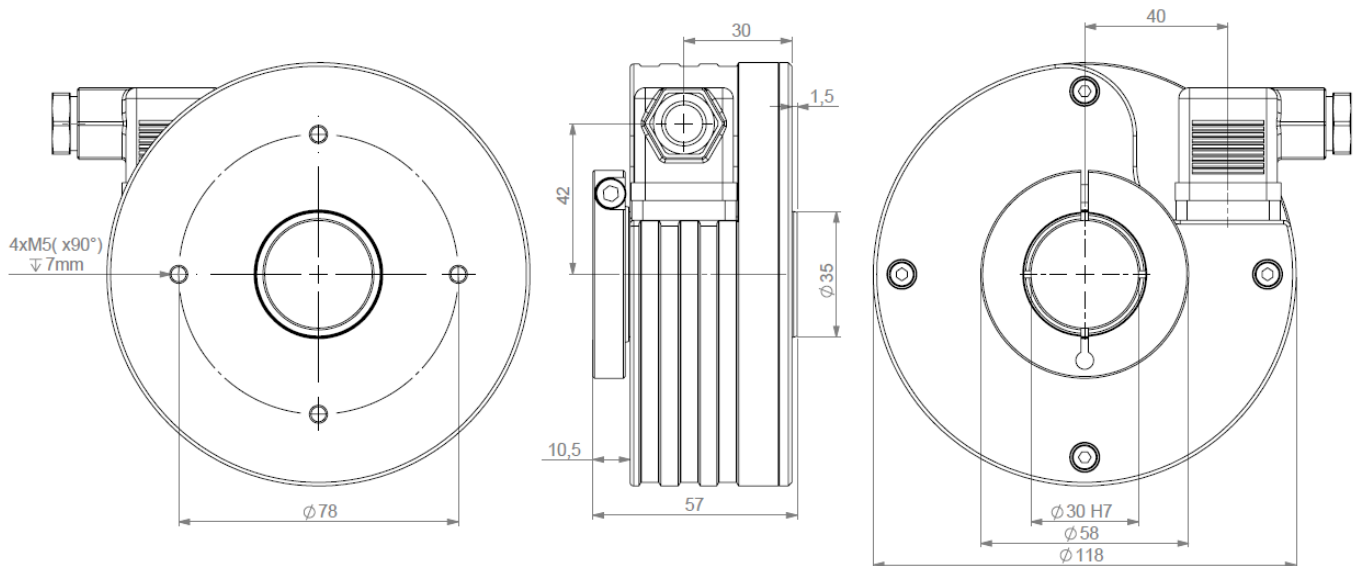


## PRELIMINARY - ELECTRONIC OVERSPEED SWITCH – SELF POWERED

- Electronic overspeed switch – self powered: no power supply needed.
- Especially designed for heavy-duty (cranes, steel, paper, wood – mills...).
- Compact and robust conception.
- Hollow shaft of up to 30mm, adaptation of the bore size with composite hub for thermal and electric insulation.
- Switching capability: 240V/16A.
- Speed calibration: from 600 to 5000 rpm – in our factory.
- Its connection is done with CNOMO connector.
- Double or triple mounting possibility in combinations with incremental, tachometer or absolute encoders.



### GOEM30 DIMENSIONS



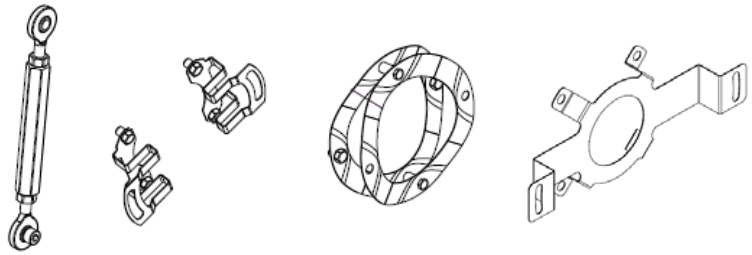
### MECHANICAL CHARACTERISTICS

Material	Cover : aluminium	Shaft seal	Viton
	Body : aluminium	Shocks (EN60068-2-27)	$\leq 2\,000\text{ m.s}^{-2}$ (during 6 ms)
Shaft	Stainless steel	Vibration (EN60068-2-6)	$\leq 200\text{ m.s}^{-2}$ (10 ... 1 000 Hz)
Bearings	6807 serie	Encoder weight (approx.)	1, 000 kg
Maximum loads	Axial : 50 N	Operating temperature	- 30 ... + 85 °C (Sensor T°)
	Radial : 80 N	Storage temperature	- 40 ... + 80 °C
Shaft inertia moment	$\leq 80.10^{-6}\text{ kg.m}^2$	Protection(EN 60529)	IP 64
Torque	$\leq 50.10^{-3}\text{ N.m}$	Torque (ring screw)	nominal: 3N.m, break: 4N.m
Permissible max. speed	5 000 min <sup>-1</sup>	Theoretical mechanical lifetime 10 <sup>9</sup> turns (F <sub>axial</sub> / F <sub>radial</sub> )	
Continuous max. speed	3 500 min <sup>-1</sup>	25 N / 40 N : 140	50 N / 80 N : 17

## PRELIMINARY - ELECTRONIC OVERSPEED SWITCH – SELF POWERED

### MOUNTING SYSTEM

Torque arm or "DAC" – Anti-Rotation Devices can be used to mount the encoder. These are designed to maintain the sensor and compensate shaft run outs.

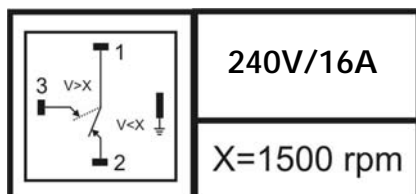


### ELECTRICAL CHARACTERISTICS

EMC	EN 50081-1, EN 61000-6-2
Isolation	500 V
Commutation hysteresis	-10%
Switching capability	240V/16A
Speed calibration	Between 600 and 5000 rpm – calibration in factory
Accuracy	<1%

### STANDARD CONNECTION – CNOMO CONECTOR – 4 PINOUTST

Contact 1 to 3 can be connected according to the desired configuration (rest, work or opposite)



The earth pin of the connector must be connected to the ground of the installation

### AVAILABLE COMBINATION (Consult us for special version: ex: Mounting system / connection / specific speed...)

Possibility to do combination with incremental encoder / tachometer / absolute encoder / mechanical overspeed switch

Note : The switch commutation speed is calibrated in our factory, no correction and no later modification is possible

### ORDERING CODIFICATION

Consult us

Made in France

---

Datasheets provided by Sensata Technologies, Inc., its subsidiaries and/or affiliates (“Sensata”) are solely intended to assist third parties (“Buyers”) who are developing systems that incorporate Sensata products (also referred to herein as “components”). Buyer understands and agrees that Buyer remains responsible for using its independent analysis, valuation, and judgment in designing Buyer’s systems and products. Sensata datasheets have been created using standard laboratory conditions and engineering practices. Sensata has not conducted any testing other than that specifically described in the published documentation for a particular datasheet. Sensata may make corrections, enhancements, improvements, and other changes to its datasheets or components without notice.

Buyers are authorized to use Sensata datasheets with the Sensata component(s) identified in each particular datasheet. HOWEVER, NO OTHER LICENSE, EXPRESS OR IMPLIED, BY ESTOPPEL OR OTHERWISE TO ANY OTHER SENSATA INTELLECTUAL PROPERTY RIGHT, AND NO LICENSE TO ANY THIRD PARTY TECHNOLOGY OR INTELLECTUAL PROPERTY RIGHT, IS GRANTED HEREIN. SENSATA DATASHEETS ARE PROVIDED “AS IS”. SENSATA MAKES NO WARRANTIES OR REPRESENTATIONS WITH REGARD TO THE DATASHEETS OR USE OF THE DATASHEETS, EXPRESS, IMPLIED, OR STATUTORY, INCLUDING ACCURACY OR COMPLETENESS. SENSATA DISCLAIMS ANY WARRANTY OF TITLE AND ANY IMPLIED WARRANTIES OF MERCHANTABILITY, FITNESS FOR A PARTICULAR PURPOSE, QUIET ENJOYMENT, QUIET POSSESSION, AND NON-INFRINGEMENT OF ANY THIRD PARTY INTELLECTUAL PROPERTY RIGHTS WITH REGARD TO SENSATA DATASHEETS OR USE THEREOF.

All products are sold subject to Sensata’s terms and conditions of sale supplied at [www.sensata.com](http://www.sensata.com). SENSATA ASSUMES NO LIABILITY FOR APPLICATIONS ASSISTANCE OR THE DESIGN OF BUYERS’ PRODUCTS. BUYER ACKNOWLEDGES AND AGREES THAT IT IS SOLELY RESPONSIBLE FOR COMPLIANCE WITH ALL LEGAL, REGULATORY, AND SAFETY-RELATED REQUIREMENTS CONCERNING ITS PRODUCTS, AND ANY USE OF SENSATA COMPONENTS IN ITS APPLICATIONS, NOTWITHSTANDING ANY APPLICATIONS-RELATED INFORMATION OR SUPPORT THAT MAY BE PROVIDED BY SENSATA.

Mailing Address: Sensata Technologies, Inc., 529 Pleasant Street, Attleboro, MA 02703, USA

## CONTACT US

### Regional head offices:

#### United States of America

Sensata Technologies

Attleboro, MA

**Phone:** 508-236-3800

**E-mail:** [support@sensata.com](mailto:support@sensata.com)

#### Netherlands

Sensata Technologies Holland B.V.

Hengelo

**Phone:** +31 74 357 8000

**E-mail:** [support@sensata.com](mailto:support@sensata.com)

#### China

Sensata Technologies China Co., Ltd.

Shanghai

**Phone:** +8621 2306 1500

**E-mail:** [support@sensata.com](mailto:support@sensata.com)

Copyright © 2023 Sensata Technologies, Inc.