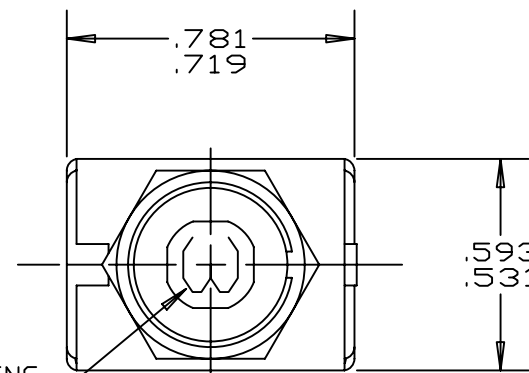
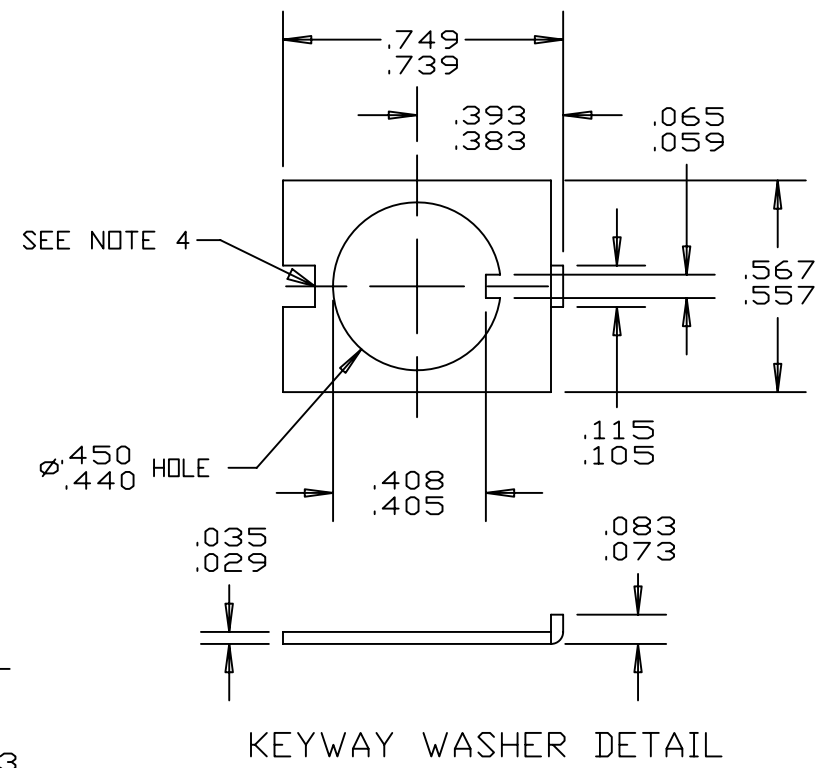
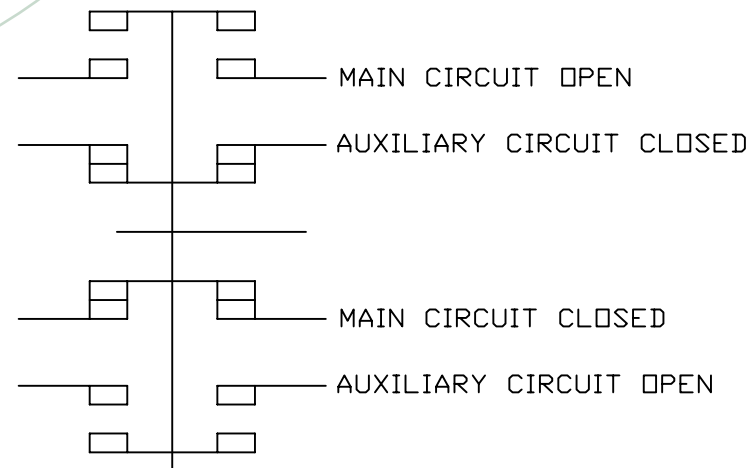


Property of
Sensata Technologies

ZONE	REV.	REVISION DESCRIPTION	ECN NO.	DATE
	N	MOD LOGO BOX; PD	ECN0036320	28-JUN-2007



SIMULATED AMP RATING
3 AMP RATING SHOWN

PERFORMANCE CHARACTERISTICS

VIBRATION	5 G'S MAXIMUM 50-500 HZ
SHOCK	5 G'S MAXIMUM
ACCELERATION	5 G'S MAXIMUM
ENDURANCE	5000 MECHANICAL CYCLES, NO LOAD 5000 ELECTRICAL TRIP CYCLES AT 28 VDC (POST ENDURANCE, MAXIMUM TRIP TIME IS 5 SECONDS)
OPERATING FORCES	5LBS MAXIMUM, PULLOUT AND RESET
WEIGHT	30 GRAMS MAXIMUM

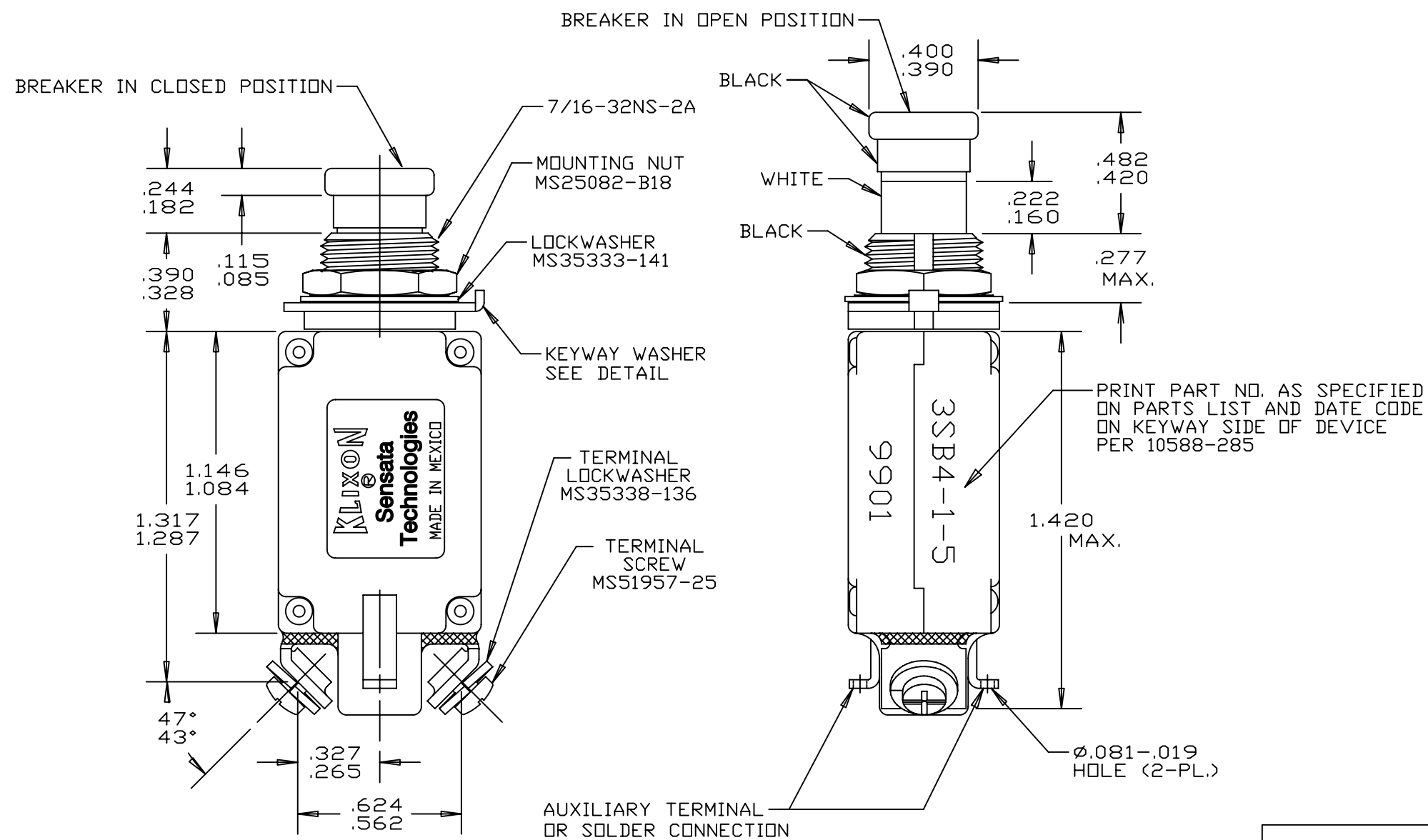
AUXILIARY CIRCUIT ENDURANCE

5 - 120 VAC,	INDUCTIVE 2 AMP	5000 CYCLES
	RESISTIVE 3 AMP	5000 CYCLES
5 - 30 VDC,	INDUCTIVE 3 AMP	5000 CYCLES
	RESISTIVE 5 AMP	5000 CYCLES

CUSTOMER WILL SPECIFY THE AMP RATING THEY WOULD LIKE TO HAVE INDICATED ON THE PUSHBUTTON. EXAMPLE, 3SB4-1-5 SIGNIFIES A 5 AMP RATING ON THE PUSHBUTTON. A 3SB4-1-B SIGNIFIES A BLANK RATING INSERT. A 3SB4-1-N SIGNIFIES NO RATING INSERT.

NOTES:

- ALL MOUNTING HARDWARE HAS A DULL BLACK FINISH.
- CIRCUIT BREAKERS ARE SUITABLE FOR MOUNTING IN A 1/8" THICK PANEL OR LESS.
- EPOXY SURFACES ARE NON-DIMENSIONED, ENVELOPE DIMENSIONS DO NOT APPLY TO THESE PROJECTED EPOXY SURFACES.
- NON FUNCTIONAL NOTCH ON THE BACK OF THE KEYWAY WASHER IS OPTIONAL



CALIBRATION AT 25°C

3SB4-1	200ma	3 SECONDS
PART NO.	MAX. CURRENT DRAW AT 28 VDC	MAX. TRIP TIME

FOR REFERENCE ONLY, CHECK LATEST REVISION BEFORE USE. PARTS MADE TO THIS PRINT MUST CONFORM TO E9898 REV. E		529 PLEASANT STREET P.O. BOX 2964 ATTLEBORO, MA 02703	
DRAWN CHAS. FLEURANT DATE 21-JUN-1994	ENGINEER K.B. GASSER DATE 21-JUN-1994 APPROVED		
UNLESS OTHERWISE SPECIFIED DIMENSIONS ARE IN INCHES TOLERANCES DECIMALS ANGLES		TITLE 3SB4 STYLE CIRCUIT BREAKER PUSH-PULL ENVELOPE DRAWING	
DATE	APPROVED	SIZE C	DWG NO. 3SB4
DATE	DO NOT SCALE DRAWING	THIRD ANGLE PROJECTION	REV. N
SCALE 1:1		AUTOCAD	SHEET 1 OF 1

DEVICE: PROJECT:3457 1