



4344 SERIES

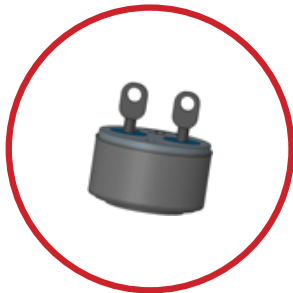
HERMETIC SEALED THERMOSTATS

Introduction

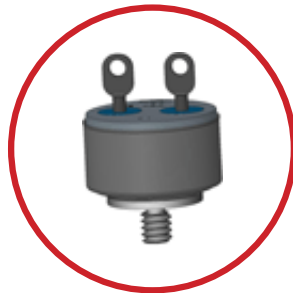
The Klixon® 4344 precision thermostat is constructed with a snap-acting bimetal disc, which serves as the actuating element. As the temperature reaches a pre-determined calibration point, the disc snaps to its reverse curvature producing a crisp, positive switching action inherent to Klixon® thermostats. This feature assures reliable, consistent operating temperature over a long cycle life. The standard thermostat is copper-nickel plated with silver contacts. Other plating finishes are available upon request. Gold plated contacts can be furnished for the electrical loads listed in the table below to assure reliable circuit switching under low wattage conditions. Gold plated contacts are not suitable for higher loads.

Our most common mounting configurations are depicted in the following pages. Many other varieties are available. Leads can be welded to pin type terminals to form an integral unit.

The switch can be custom packed into a probe, strap mount, or immersion thermostat. Consult the factory for special requests.



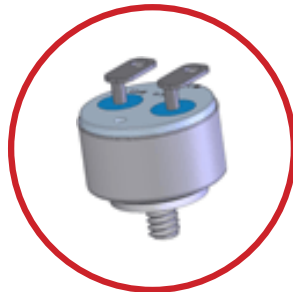
4344 - 7



4344 - 101



4344 - 142



4344 - 135

Features

- Snap-action switching
- Rapid thermal response
- Single pole, single throw
- Normally open or normally closed
- Pre-set, non adjustable calibration

Switching Action

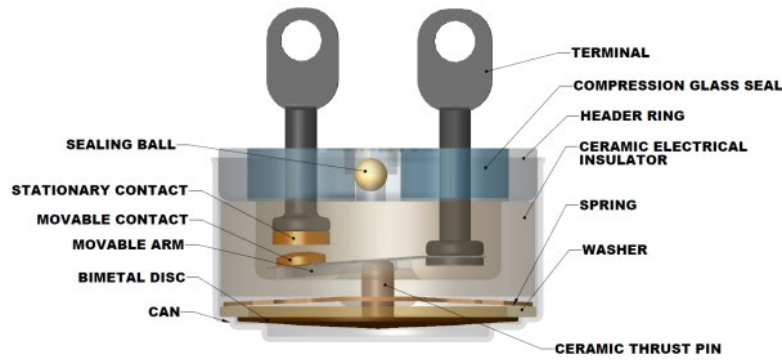
All thermostats are supplied with single pole, single throw switching. The contacts can be constructed as:

Normally Closed: Limit type application; contacts open on temperature rise at a predetermined temperature to de-energize the circuit. Contacts automatically re-close as the device cools to a pre-determined temperature.

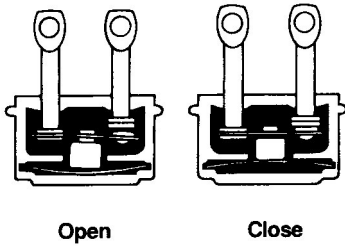
Normally Open: Fan type application; contacts close on temperature rise at a predetermined temperature to energize the circuit. Contacts automatically reopen as the device cools to a predetermined temperature.

The opening and closing temperatures are pre-set and non-adjustable.

Typical Cross Section View



Operation



When heated, the internal stresses of the bi-metal cause the disc to reverse its curvature with a snap-action at a fixed, preset temperature and operate the electrical contacts.

A decrease in the ambient temperature below the reset temperature of the disc relieves the internal stresses in the disc. The disc returns to its normal curvature and the contacts assume their normal operating position.



SPECIFICATIONS

Performance Characteristics

| Switch Action | SPST (Snap Action) | | | | | | | | | | | | | | | | | | | | | | | | | | | | | | |
|-----------------------------|--|-----------|---------|-------------|---------|---------|-------------|---------|--|--|-----|-----|-----|---------|-----|-----|-----|--------|-----|-----|-----|--------|-----|-----|-----|--------|-----|-----|-----|-------|--|
| Contact Resistance | 0.050 ohms maximum per MIL-STD-202, Method 307 | | | | | | | | | | | | | | | | | | | | | | | | | | | | | | |
| Contact Ratings | <table border="1"> <thead> <tr> <th>30 VAC/DC</th> <th>125 VAC</th> <th>250 VAC</th> <th rowspan="2">Life Cycles</th> </tr> <tr> <th colspan="3">Amperes</th> </tr> </thead> <tbody> <tr> <td>5.0</td> <td>2.5</td> <td>1.0</td> <td>100,000</td> </tr> <tr> <td>5.5</td> <td>3.0</td> <td>1.5</td> <td>50,000</td> </tr> <tr> <td>6.0</td> <td>4.0</td> <td>2.0</td> <td>25,000</td> </tr> <tr> <td>6.5</td> <td>5.0</td> <td>2.5</td> <td>10,000</td> </tr> <tr> <td>7.0</td> <td>6.0</td> <td>3.0</td> <td>5,000</td> </tr> </tbody> </table> | | | 30 VAC/DC | 125 VAC | 250 VAC | Life Cycles | Amperes | | | 5.0 | 2.5 | 1.0 | 100,000 | 5.5 | 3.0 | 1.5 | 50,000 | 6.0 | 4.0 | 2.0 | 25,000 | 6.5 | 5.0 | 2.5 | 10,000 | 7.0 | 6.0 | 3.0 | 5,000 | |
| | 30 VAC/DC | 125 VAC | 250 VAC | Life Cycles | | | | | | | | | | | | | | | | | | | | | | | | | | | |
| | Amperes | | | | | | | | | | | | | | | | | | | | | | | | | | | | | | |
| | 5.0 | 2.5 | 1.0 | 100,000 | | | | | | | | | | | | | | | | | | | | | | | | | | | |
| | 5.5 | 3.0 | 1.5 | 50,000 | | | | | | | | | | | | | | | | | | | | | | | | | | | |
| 6.0 | 4.0 | 2.0 | 25,000 | | | | | | | | | | | | | | | | | | | | | | | | | | | | |
| 6.5 | 5.0 | 2.5 | 10,000 | | | | | | | | | | | | | | | | | | | | | | | | | | | | |
| 7.0 | 6.0 | 3.0 | 5,000 | | | | | | | | | | | | | | | | | | | | | | | | | | | | |
| | Based on standard differential | | | | | | | | | | | | | | | | | | | | | | | | | | | | | | |
| Dielectric Strength | 1250 VAC, rms, 60 Cycles for 1 minute, terminal to case, per MIL-STD-202, Method 301 | | | | | | | | | | | | | | | | | | | | | | | | | | | | | | |
| Vibration Resistance | 5-2000 Hm, 20G, per MIL-STD-202, Method 204 Condition D, (unmonitored) | | | | | | | | | | | | | | | | | | | | | | | | | | | | | | |
| Shock Resistance | 100G, 6 milliseconds, per MIL-STD-202, Method 213 | | | | | | | | | | | | | | | | | | | | | | | | | | | | | | |
| Hermeticity | 1 x 10 ⁻⁵ atm cc/sec. max per MIL-STD-202 Method 112, Condition C | | | | | | | | | | | | | | | | | | | | | | | | | | | | | | |
| Salt Spray | per MIL-STD-202, Method 101, Condition B, 5% solution | | | | | | | | | | | | | | | | | | | | | | | | | | | | | | |
| Weight | Basic Unit | 4.8 grams | | | | | | | | | | | | | | | | | | | | | | | | | | | | | |
| | with Bracket | 5.8 grams | | | | | | | | | | | | | | | | | | | | | | | | | | | | | |

Gold Contact Ratings (Resistive)

| | |
|------------------|------------------|
| 30 VAC/DC | 500 mA and below |
| 115 VAC | 200 mA and below |
| 230 VAC | 100 mA and below |

Temperature

| | | | | | | | | | | | | | | | | | | |
|----------------------------------|---|-------|------|------|-----|-----|---------------------|-------|----|------|----|------|-------------------|-------|----|------|----|------|
| Ambient Temperature Range | -80°F to +550°F (-62.2°C to 287.8°C) | | | | | | | | | | | | | | | | | |
| Operating Temperature | Temperature at which normally closed contacts open or normally open contacts closed. | | | | | | | | | | | | | | | | | |
| Tolerance | Allowable range above and below setpoint and reset temperatures * An additional $\pm 3^{\circ}\text{F}$ tolerance is required for over molded devices. | | | | | | | | | | | | | | | | | |
| Differential | Operating Temperature | | | | | | Differential | | | | | | Tolerance* | | | | | |
| | °F | | °C | | °F | | °C | | °F | | °C | | °F | | °C | | | |
| | -65 | -53.9 | 30 | 16.7 | 10 | 5.6 | 210 | 98.9 | 30 | 16.7 | 8 | 4.4 | 220 | 104.4 | 30 | 16.7 | 8 | 4.4 |
| | -40 | -40.0 | 30 | 16.7 | 10 | 5.6 | 230 | 110.0 | 30 | 16.7 | 8 | 4.4 | 240 | 115.6 | 30 | 16.7 | 8 | 4.4 |
| | -15 | -26.1 | 30 | 16.7 | 10 | 5.6 | 250 | 121.1 | 30 | 16.7 | 8 | 4.4 | 260 | 126.7 | 30 | 16.7 | 8 | 4.4 |
| | 0 | -17.8 | 20 | 11.1 | 5 | 2.8 | 270 | 132.2 | 30 | 16.7 | 8 | 4.4 | 280 | 137.8 | 30 | 16.7 | 8 | 4.4 |
| | 10 | -12.2 | 20 | 11.1 | 5 | 2.8 | 290 | 143.3 | 30 | 16.7 | 8 | 4.4 | 300 | 148.9 | 30 | 16.7 | 8 | 4.4 |
| | 20 | -6.7 | 20 | 11.1 | 5 | 2.8 | 310 | 154.4 | 40 | 22.2 | 12 | 6.7 | 320 | 160.0 | 40 | 22.2 | 12 | 6.7 |
| | 30 | -1.1 | 20 | 11.1 | 5 | 2.8 | 330 | 165.6 | 40 | 22.2 | 12 | 6.7 | 340 | 171.1 | 40 | 22.2 | 12 | 6.7 |
| | 40 | 4.4 | 20 | 11.1 | 5 | 2.8 | 350 | 176.7 | 40 | 22.2 | 12 | 6.7 | 375 | 190.6 | 40 | 22.2 | 12 | 6.7 |
| | 50 | 10.0 | 20 | 11.1 | 5 | 2.8 | 400 | 204.4 | 40 | 22.2 | 12 | 6.7 | 425 | 218.3 | 40 | 22.2 | 12 | 6.7 |
| | 60 | 15.6 | 20 | 11.1 | 5 | 2.8 | 450 | 232.2 | 40 | 22.2 | 12 | 6.7 | 475 | 246.1 | 70 | 38.9 | 25 | 13.9 |
| | 70 | 21.1 | 20 | 11.1 | 5 | 2.8 | 500 | 260.0 | 70 | 38.9 | 25 | 13.9 | 525 | 273.9 | 70 | 38.9 | 25 | 13.9 |
| | 80 | 26.7 | 20 | 11.1 | 5 | 2.8 | 550 | 287.8 | 70 | 38.9 | 25 | 13.9 | | | | | | |
| | 90 | 32.2 | 20 | 11.1 | 5 | 2.8 | | | | | | | | | | | | |
| | 100 | 37.8 | 20 | 11.1 | 5 | 2.8 | | | | | | | | | | | | |
| | 110 | 43.3 | 20 | 11.1 | 5 | 2.8 | | | | | | | | | | | | |
| | 120 | 48.9 | 20 | 11.1 | 5 | 2.8 | | | | | | | | | | | | |
| | 130 | 54.4 | 20 | 11.1 | 5 | 2.8 | | | | | | | | | | | | |
| | 140 | 60.0 | 20 | 11.1 | 5 | 2.8 | | | | | | | | | | | | |
| | 150 | 65.6 | 20 | 11.1 | 5 | 2.8 | | | | | | | | | | | | |
| 160 | 71.1 | 20 | 11.1 | 5 | 2.8 | | | | | | | | | | | | | |
| 170 | 76.7 | 20 | 11.1 | 5 | 2.8 | | | | | | | | | | | | | |
| 180 | 82.2 | 20 | 11.1 | 5 | 2.8 | | | | | | | | | | | | | |
| 190 | 87.8 | 20 | 11.1 | 5 | 2.8 | | | | | | | | | | | | | |
| 200 | 93.9 | 20 | 11.1 | 5 | 2.8 | | | | | | | | | | | | | |
| Materials and Finish | Unplated 304 stainless for all new designs. (other finishes available upon request) | | | | | | | | | | | | | | | | | |

Standard Lead Connections

Leads are available in heat-resistant rubber, neoprene, silicone-rubber and Teflon* in #118 gauge stranded wire in standard incremental lengths of 4" to 36". Other gauge and lengths are available upon request.

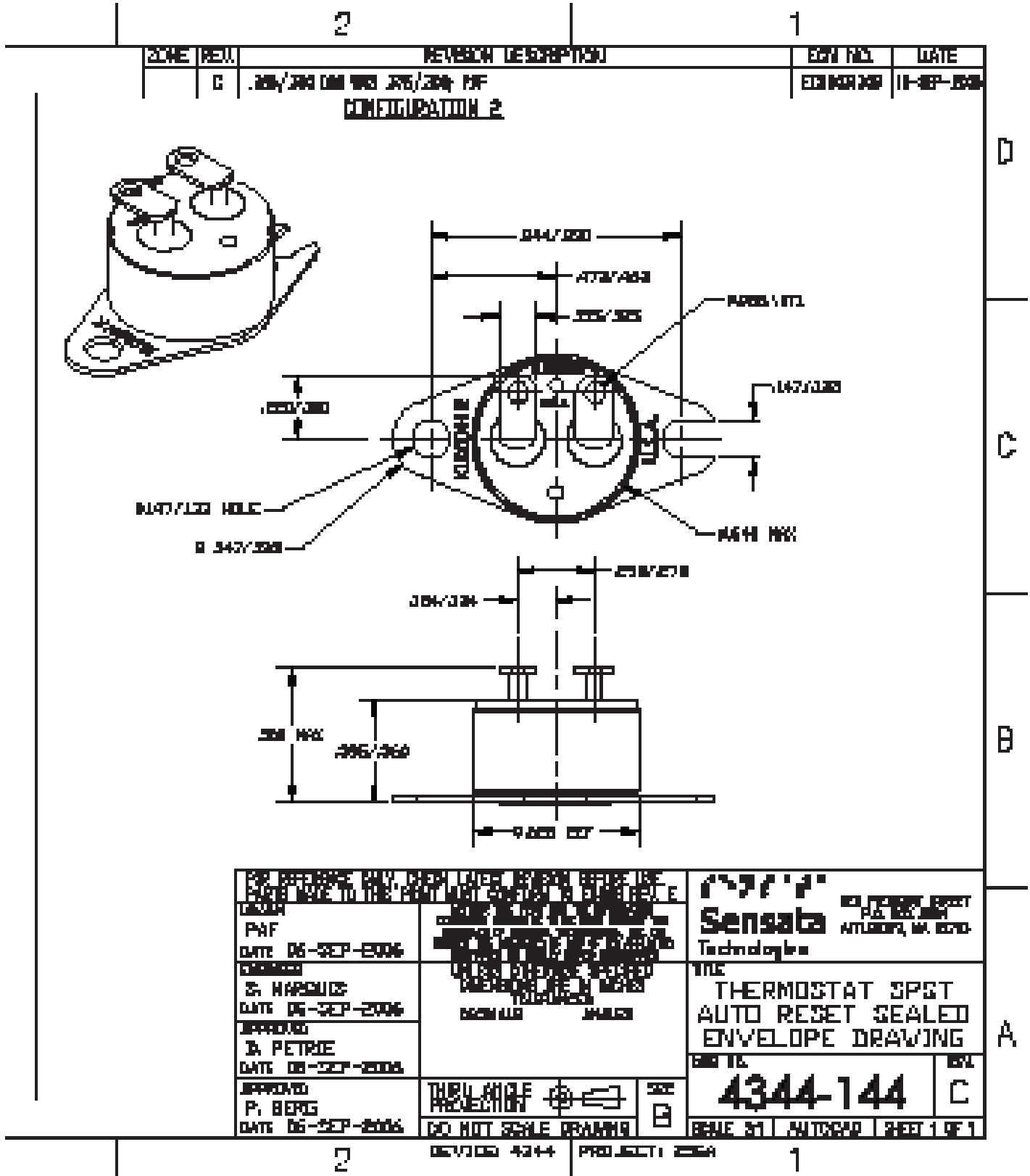
* Trademark of E.I. DuPont de Nemours and Co.

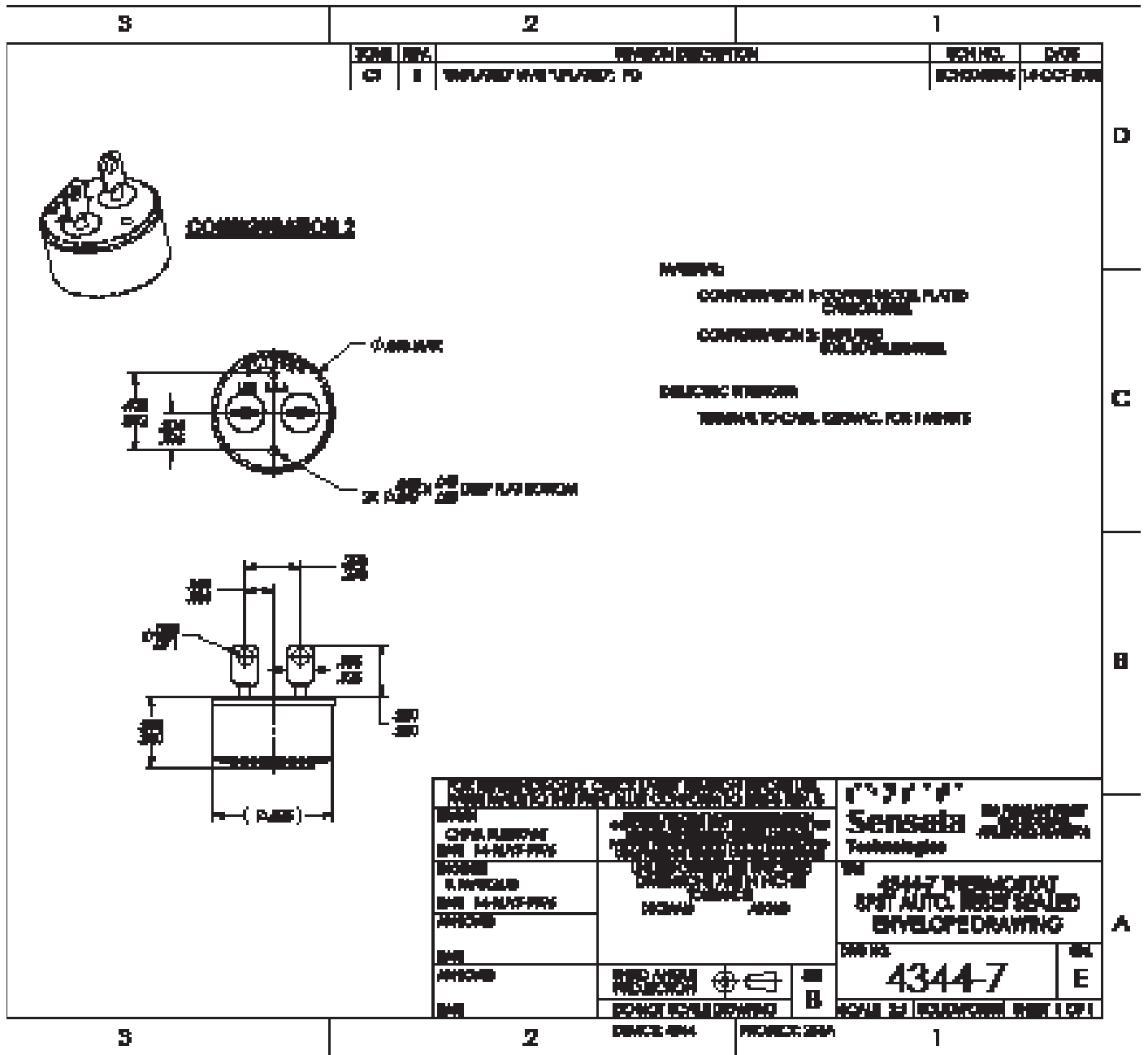


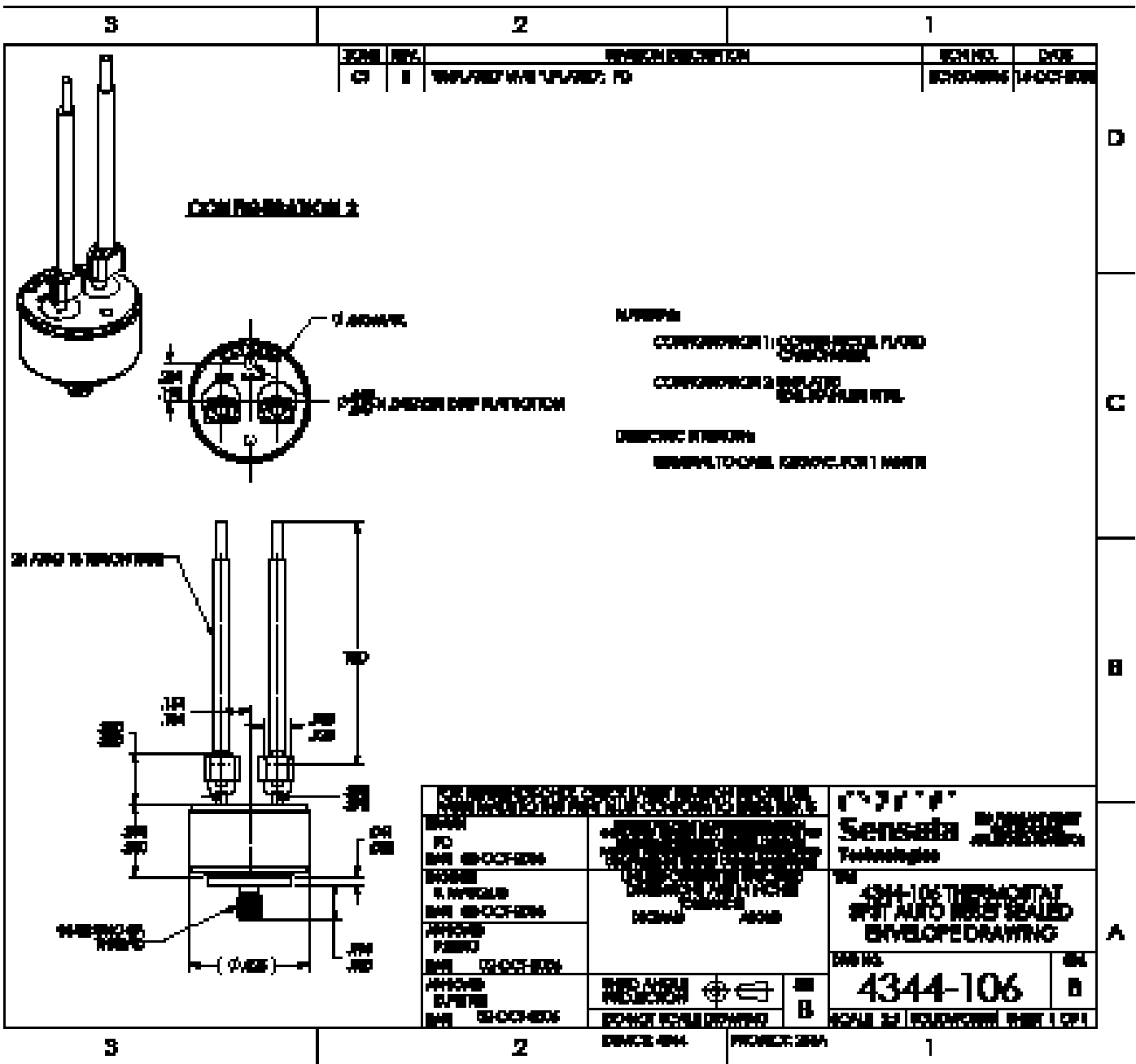
TYPICAL CONFIGURATIONS

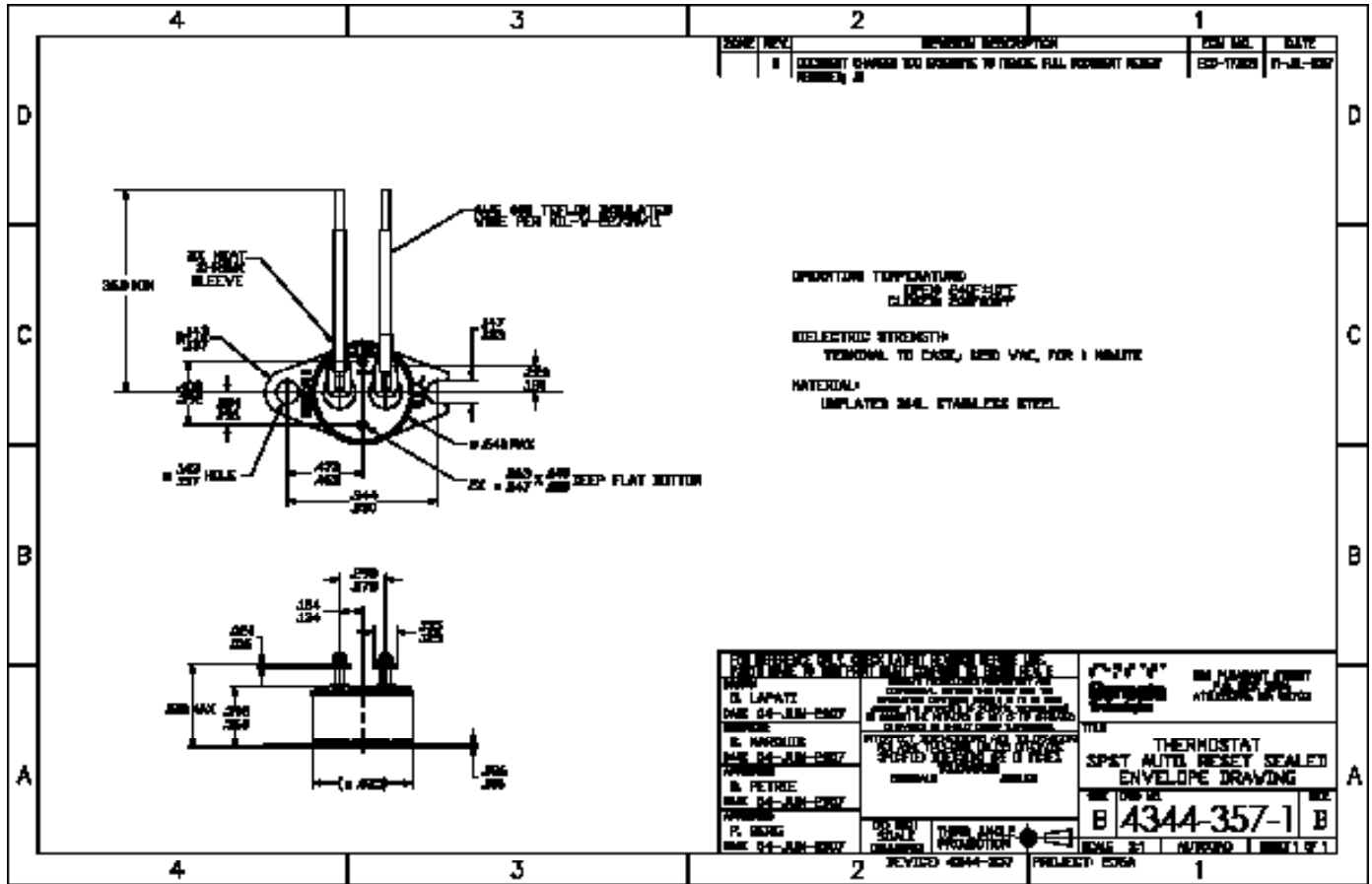
An additional $\pm 3^\circ\text{F}$ tolerance is required for over molded devices.
All dimensions are in inches

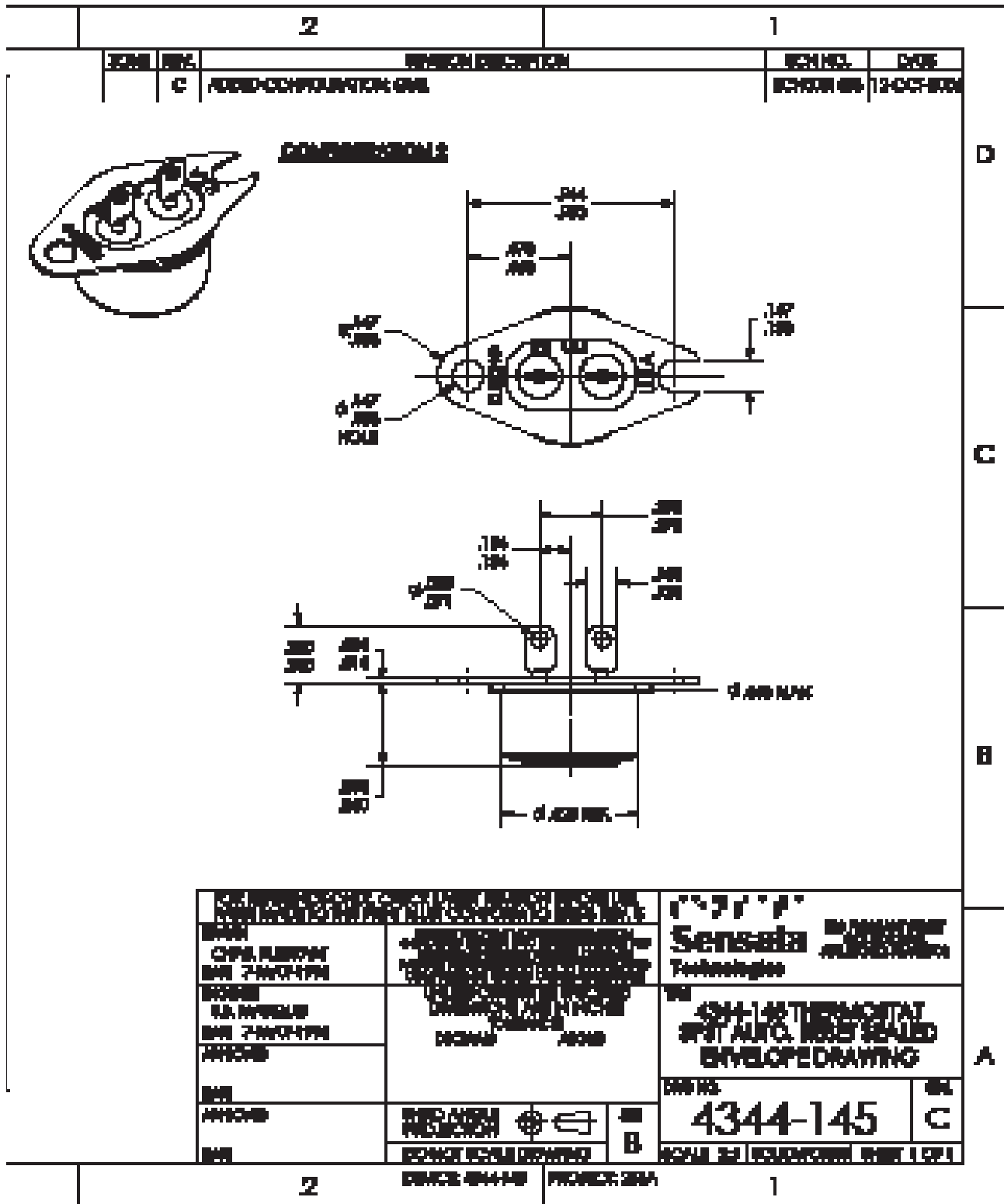
4344 - 144













AGENCY APPROVALS AND CERTIFICATIONS



| | |
|------------|------------------|
| UL | File No. 34618 |
| CSA | File No. LR24458 |



WARNINGS



RISK OF MATERIAL DAMAGE AND HOT ENCLOSURE

- The product's side panels may be hot, allow the product to cool before touching
- Follow proper mounting instructions including torque values
- Do not allow liquids or foreign objects to enter this product

Failure to follow these instructions can result in serious injury, or equipment damage.



HAZARD OF ELECTRIC SHOCK, EXPLOSION OR ARC FLASH

- Disconnect all power before installing or working with this equipment
- Verify all connections and replace all covers before turning on power

Failure to follow these instructions will result in death or serious injury

Sensata Technologies, Inc. ("Sensata") data sheets are solely intended to assist designers ("Buyers") who are developing systems that incorporate Sensata products (also referred to herein as "components"). Buyer understands and agrees that Buyer remains responsible for using its independent analysis, evaluation and judgment in designing Buyer's systems and products. Sensata data sheets have been created using standard laboratory conditions and engineering practices. Sensata has not conducted any testing other than that specifically described in the published documentation for a particular data sheet. Sensata may make corrections, enhancements, improvements and other changes to its data sheets or components without notice.

Buyers are authorized to use Sensata data sheets with the Sensata component(s) identified in each particular data sheet. HOWEVER, NO OTHER LICENSE, EXPRESS OR IMPLIED, BY ESTOPPEL OR OTHERWISE TO ANY OTHER SENSATA INTELLECTUAL PROPERTY RIGHT, AND NO LICENSE TO ANY THIRD PARTY TECHNOLOGY OR INTELLECTUAL PROPERTY RIGHT, IS GRANTED HEREIN. SENSATA DATA SHEETS ARE PROVIDED "AS IS". SENSATA MAKES NO WARRANTIES OR REPRESENTATIONS WITH REGARD TO THE DATA SHEETS OR USE OF THE DATA SHEETS, EXPRESS, IMPLIED OR STATUTORY, INCLUDING ACCURACY OR COMPLETENESS. SENSATA DISCLAIMS ANY WARRANTY OF TITLE AND ANY IMPLIED WARRANTIES OF MERCHANTABILITY, FITNESS FOR A PARTICULAR PURPOSE, QUIET ENJOYMENT, QUIET POSSESSION, AND NON-INFRINGEMENT OF ANY THIRD PARTY INTELLECTUAL PROPERTY RIGHTS WITH REGARD TO SENSATA DATA SHEETS OR USE THEREOF.

All products are sold subject to Sensata's terms and conditions of sale supplied at www.sensata.com SENSATA ASSUMES NO LIABILITY FOR APPLICATIONS ASSISTANCE OR THE DESIGN OF BUYERS' PRODUCTS. BUYER ACKNOWLEDGES AND AGREES THAT IT IS SOLELY RESPONSIBLE FOR COMPLIANCE WITH ALL LEGAL, REGULATORY AND SAFETY-RELATED REQUIREMENTS CONCERNING ITS PRODUCTS, AND ANY USE OF SENSATA COMPONENTS IN ITS APPLICATIONS, NOTWITHSTANDING ANY APPLICATIONS-RELATED INFORMATION OR SUPPORT THAT MAY BE PROVIDED BY SENSATA.

Mailing Address: Sensata Technologies, Inc., 529 Pleasant Street, Attleboro, MA 02703, USA.

CONTACT US

Americas

+1 (508)-236-3287
klixon@sensata.com

AUTHORIZED DISTRIBUTORS

Flame Enterprises
Bob Correa, Director of Product Management
+1 (240) 236-9802
bcorrea@flamecorp.com
info@flamecorp.com | Web
Tel: 1-800-854-2255 or 1-818-700-2905
Fax: 1-818-407-5080

Peerless Electronics
Steve Gunther, National Sales Manager

+1 (516) 594-3509
sgunther@peerlesselectronics.com
nysales@peerlesselectronics.com | Web
Tel: 1-800-285-2121
Fax: 1-800-222-8096

Europe, Middle East & Africa

Flame Enterprises
Bob Correa, Director of Product Management
+1 (240) 236-9802
bcorrea@flamecorp.com
info@flamecorp.com | Web
Tel: 1-800-854-2255 or 1-818-700-2905
Fax: 1-818-407-5080