

4

3

2

1

D

D

C

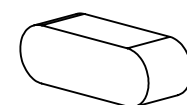
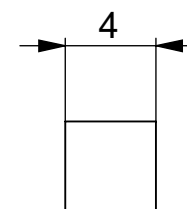
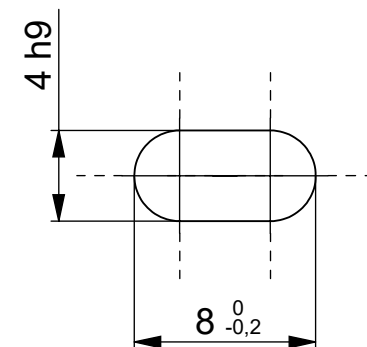
C

B

B

A

A



UNCONTROLLED COPY

FIRST ISSUE DATE : 27/05/2020
 DRAWN : RHM
 APPROVED : JHH
 DATE : 27/05/2020

SENSATA TECHNOLOGIES PROPRIETARY AND CONFIDENTIAL. NEITHER THIS PRINT NOR THE INFORMATION CONTAINED HEREON IS TO BE USED AGAINST THE INTERESTS OF SENSATA TECHNOLOGIES OR AGAINST THE INTERESTS OF ANY OF ITS AFFILIATED COMPANIES OR WHOLLY OWNED SUBSIDIARIES.



BEI SENSORS SAS
 Espace Européen de l'Entreprise
 9, rue de Copenhague
 BP 70044 - F 67013 STRASBOURG Cedex
 Tel : +33 (0)3 88 20 81 40

BEI Sensors

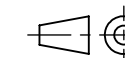
ECN :
 DATE :

Housing material :
 Flange material :
 Key material : Steel

UNLESS OTHERWISE SPECIFIED DIMENSIONS ARE IN MILLIMETERS [INCHES] AND ARE INTENDED AS NOMINAL. SEE PRODUCT SPECIFICATION FOR MORE DETAILS.

DO NOT SCALE DRAWING

EUROPEAN SYSTEM



TITLE			
9435/009			
SIZE	DWG NO.	REV.	
A3	M134	A	
SCALE	3/1	SOLIDWORKS	SHEET 1 OF 1

4

3

2

1

DEVICE:

PROJECT: