

4

3

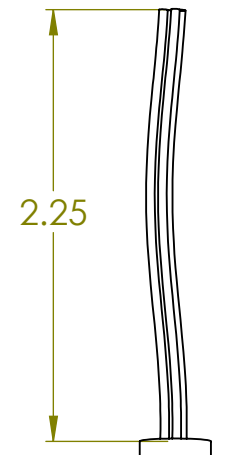
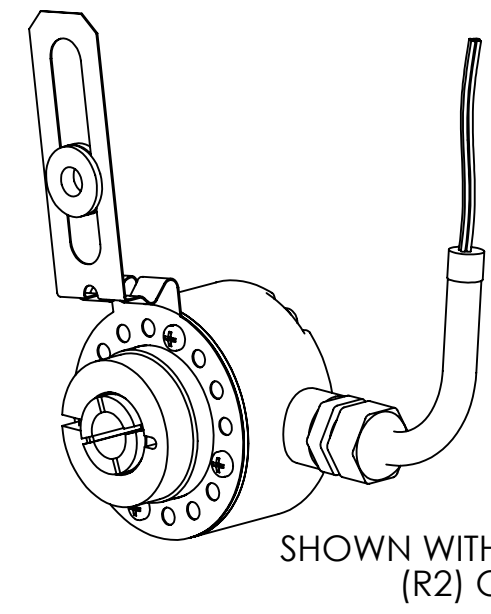
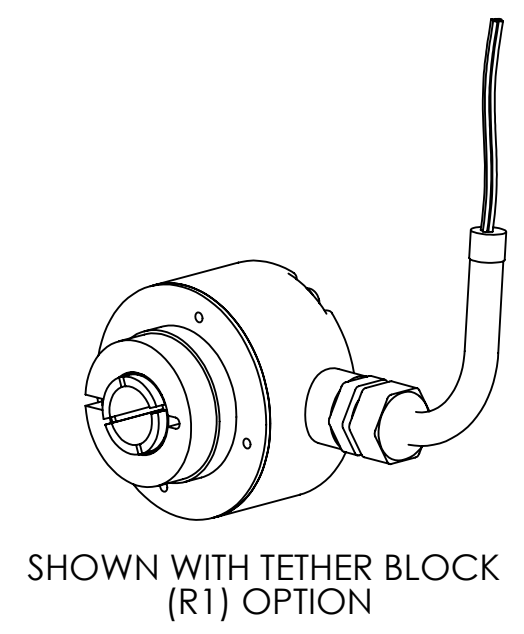
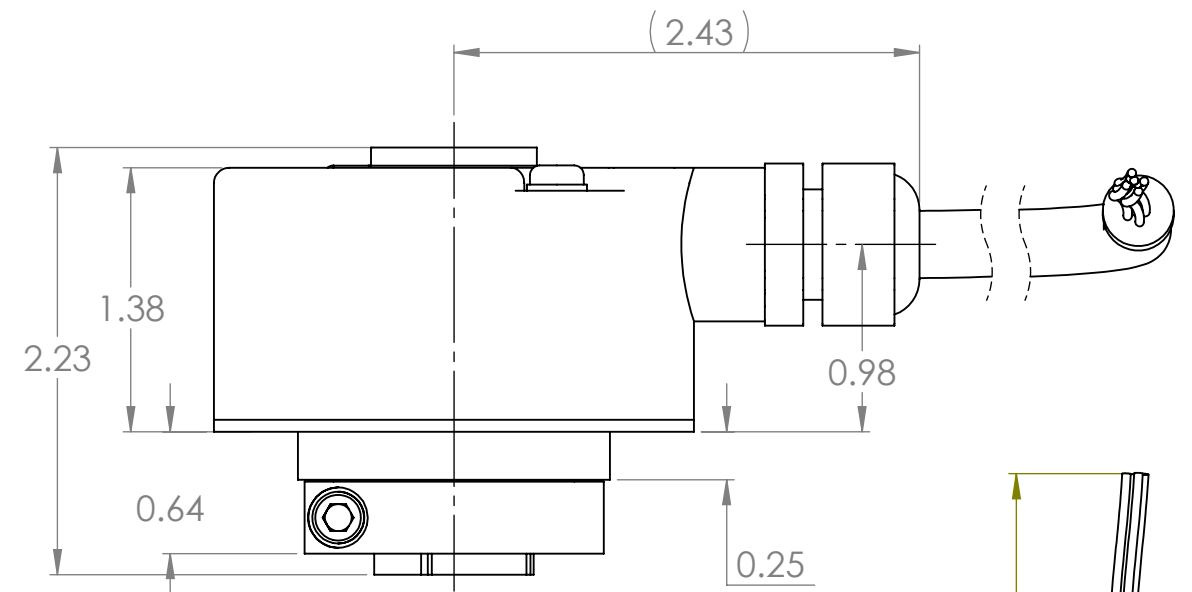
2

1

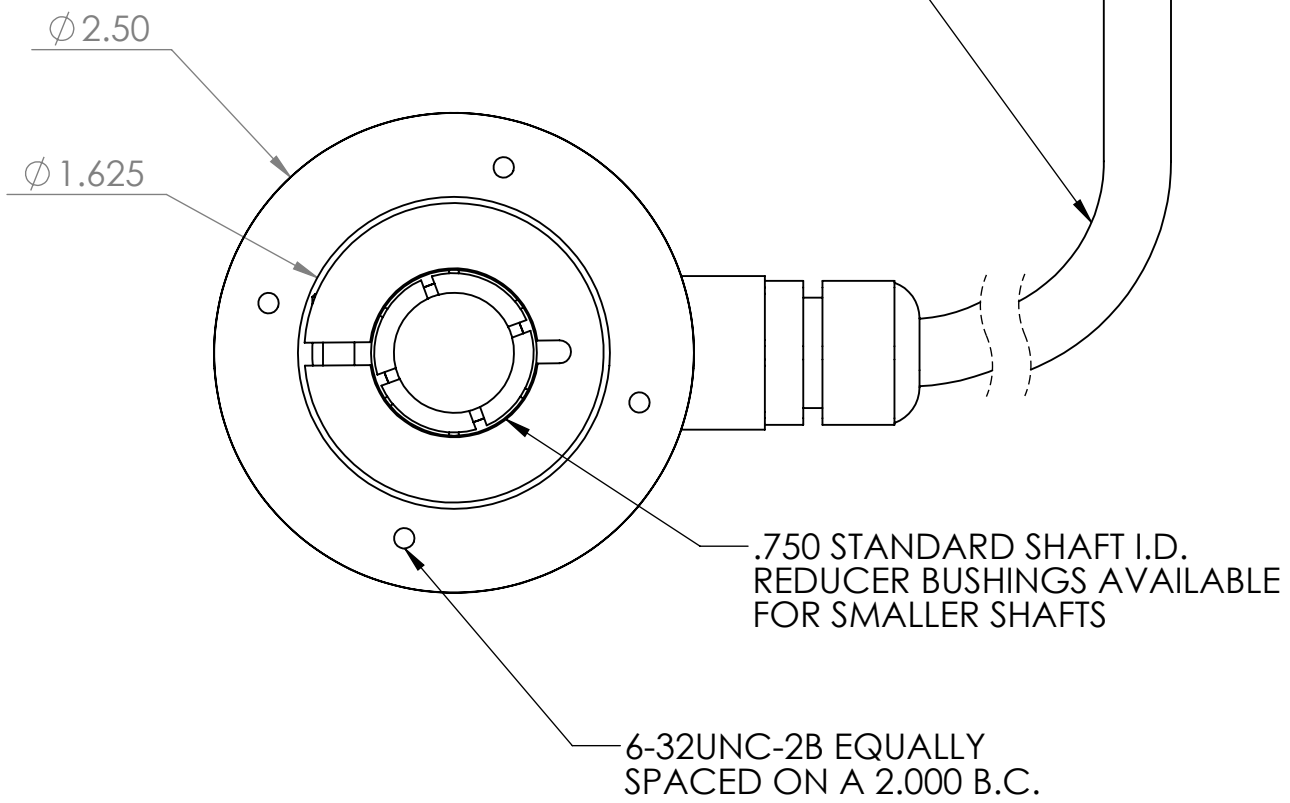
ZONE	REV.	REVISION DESCRIPTION	ECN NO.	DATE

TABLE 1
STANDARD CHANNEL PIN-OUT

FUNCTION	WIRE COLOR
A	YELLOW
B	BLUE
Z	ORANGE
+V	RED
SHIELD	-
0V	BLACK
CASE GROUND	GREEN
A/	WH/YELLOW
B/	WH/BLUE
Z/	WH/ORANGE



SHIELDED JACKETED CABLE
STANDARD LENGTH 18 INCHES



SAMPLE MODEL NUMBER: HS25F-62-R1-SS-1024-ABZC-28/V-SCS18

SAMPLE PART NUMBER: 01072-XXX

REFERENCE SPEC: 02352-001

UNCONTROLLED COPY			
FIRST ISSUE DATE: XX/XX/XX	SENSATA TECHNOLOGIES PROPRIETARY AND CONFIDENTIAL. NEITHER THIS PRINT NOR THE INFORMATION CONTAINED HEREON IS TO BE USED AGAINST THE INTERESTS OF SENSATA TECHNOLOGIES OR AGAINST THE INTERESTS OF ANY OF ITS AFFILIATED COMPANIES OR WHOLLY OWNED SUBSIDIARIES.	BEI SENSORS 1461 LAWRENCE DRIVE THOUSAND OAKS, CA 93120	
DRAWN:		TITLE	
APPROVED:		ENODER, HS25 THRU SHAFT WITH SEALED CABLE EXIT	
DATE: XX/XX/XX	INTERPRET DIMENSIONING AND TOLERANCING PER ASME Y14.5-2009. UNLESS OTHERWISE SPECIFIED DIMENSIONS ARE IN INCHES [MILLIMETERS] AND ARE INTENDED AS NOMINAL SEE PRODUCT SPECIFICATIONS FOR MORE DETAILS.	SIZE	DWG NO.
ECN:		B	09927-HS25-SCS
DATE:		REV.	A
MATERIAL:	DO NOT SCALE DRAWING	THIRD ANGLE PROJECTION	SCALE 1:2
		SOLIDWORKS	
		SHEET 1 OF 1	

4

3

2

1

DEVICE:

PROJECT: