

# LEJ & LEJA SERIES

## HYDRAULIC-MAGNETIC CIRCUIT BREAKERS

The LEJ/LEJA series circuit breaker meets the evolving demand for the high performance protection of critical data center and telecommunications applications requiring up to 277VAC per pole, UL 489 listing in the smallest case size currently available in the marketplace. The LEJ/LEJA platform is based on the highly successful and field proven LEG/LEGA designs while incorporating state-of-the-art arc quenching technologies and offering voltage ratings that are well suited for global applications that require 208VAC through 277VAC ratings for increased power efficiency.

Typical applications include power distribution units (PDUs) used in data center enclosures, telecom AC power supplies and a variety of Industrial applications benefiting from the higher power density. Like the LEG/LEGA product family, the LEJ/LEJA series offers a variety of features including different terminations and actuators to meet most any requirements.



### Features

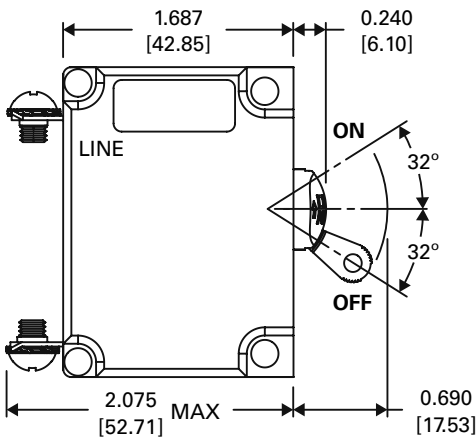
- Up to two poles, 2 amps to 30 amps rated current at 240VAC per pole
- UL 489 listed and TÜV approvals available
- Up to 10,000AIC short circuit amperage rating
- Low Depth "A" option provides a 31% lower depth compared to standard LEJ product
- Maintains the high performance characteristics, reliability, panel cut out and mounting dimensions of LEG/LEGA products

## SPECIFICATIONS

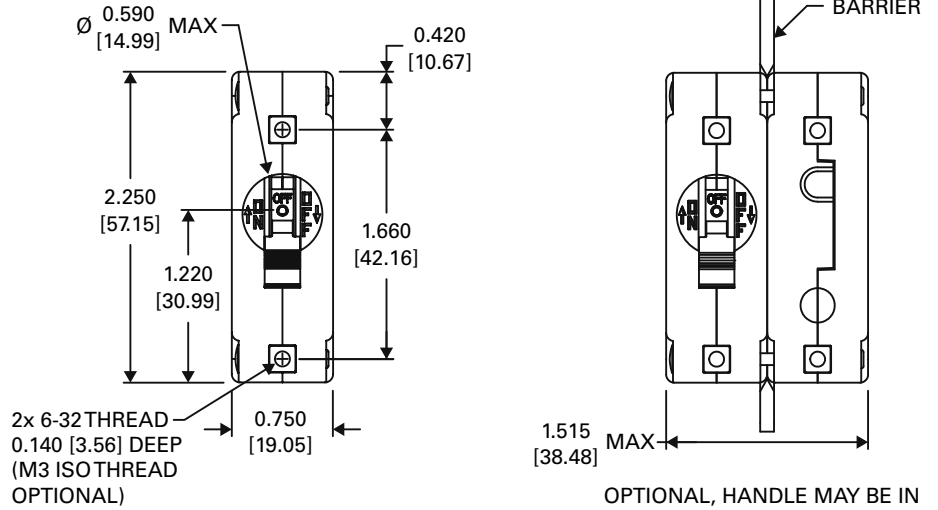
| Type | Decision     | UL-489 |       |      |       | TUV (PER EN60947-2) |       |      |      |       |                 |     |  |  |  |  |  |  |  |
|------|--------------|--------|-------|------|-------|---------------------|-------|------|------|-------|-----------------|-----|--|--|--|--|--|--|--|
|      | Detail       | Poles  | Max V | Amps | AIC   | Poles               | Max V | Amps | Ics  | Icu   | I <sub>su</sub> | lit |  |  |  |  |  |  |  |
| LEJ  | None         | 1      | 240   | 2-20 | 5000  | 1                   | 240   | 2-20 | 3000 | 10000 | N/A             | N/A |  |  |  |  |  |  |  |
|      | "R" In Sixth |        |       |      | 10000 |                     |       |      |      |       |                 |     |  |  |  |  |  |  |  |
|      | None         | 2      |       | 2-30 | 5000  | 2                   |       | 2-30 |      |       |                 |     |  |  |  |  |  |  |  |
|      | "R" In Sixth |        |       |      | 10000 |                     |       |      |      |       |                 |     |  |  |  |  |  |  |  |
| LEJV | None         | 1      | 240   | 2-20 | 5000  | 1                   | 240   | 2-20 | 3000 | 7500  | N/A             | N/A |  |  |  |  |  |  |  |
|      | "R" In Sixth |        |       |      | 10000 |                     |       |      |      |       |                 |     |  |  |  |  |  |  |  |
|      | None         | 2      |       | 2-30 | 5000  | 2                   |       | 2-30 |      | 10000 |                 |     |  |  |  |  |  |  |  |
|      | "R" In Sixth |        |       |      | 10000 |                     |       |      |      |       |                 |     |  |  |  |  |  |  |  |
| LEJV | "E" In Sixth | 1-2    | 277   | 2-20 | 10000 | 1-2                 | 277   | 2-20 | 2500 | 10000 |                 |     |  |  |  |  |  |  |  |
| LUJ  | None         | 1      | 240   | 2-20 | 5000  |                     |       |      |      |       |                 |     |  |  |  |  |  |  |  |
|      | "R" In Sixth |        |       |      | 10000 |                     |       |      |      |       |                 |     |  |  |  |  |  |  |  |
|      | None         | 2      |       | 2-30 | 5000  |                     |       |      |      |       |                 |     |  |  |  |  |  |  |  |
|      | "R" In Sixth |        |       |      | 10000 |                     |       |      |      |       |                 |     |  |  |  |  |  |  |  |
| LUJV | "E" In Sixth | 1-2    | 277   | 2-20 | 10000 |                     |       |      |      |       |                 |     |  |  |  |  |  |  |  |

# CONFIGURATIONS: LEJ TOGGLE HANDLE

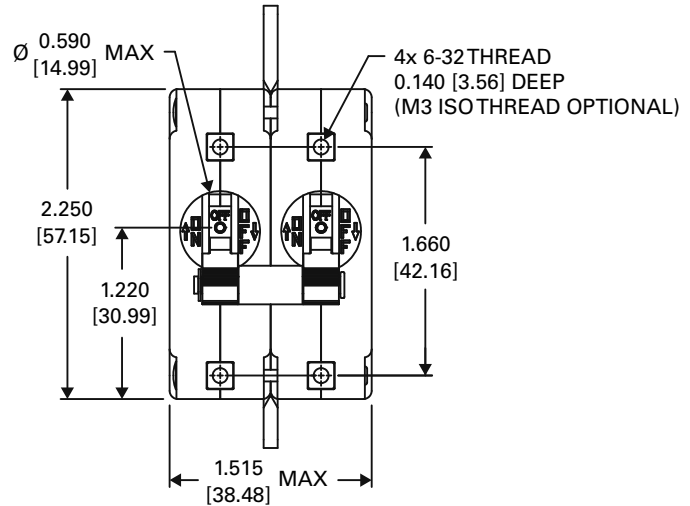
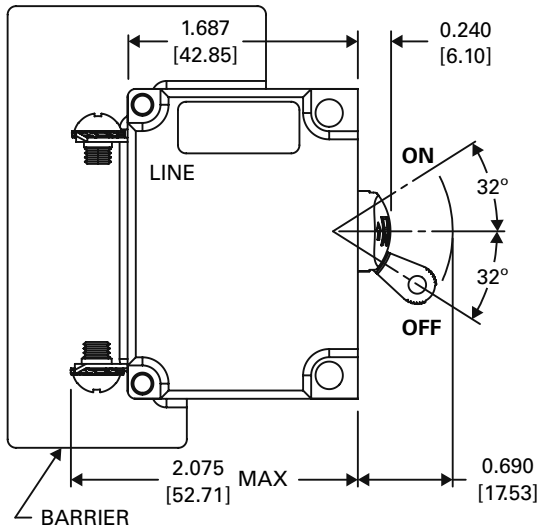
**SINGLE POLE**



**TWO POLE, 1 HANDLE**

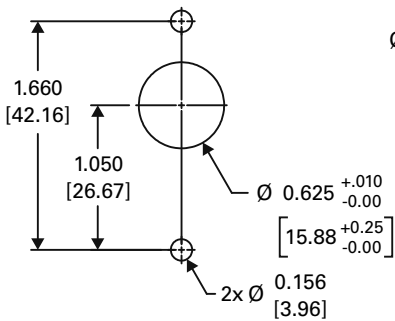


**TWO POLE, 2 HANDLE**

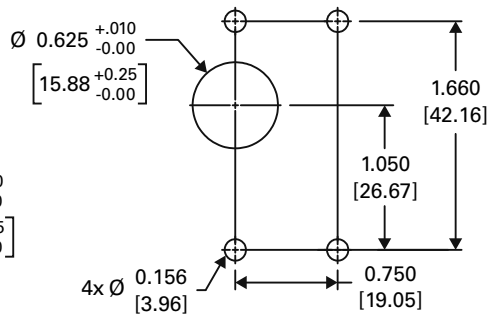


OPTIONAL, HANDLE MAY BE IN POLE 1 INSTEAD OF POLE 2

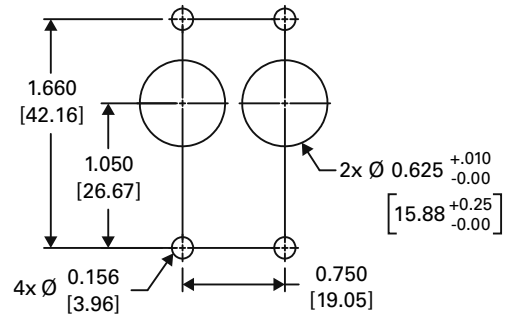
**PANEL MOUNT CUTOUT - 1 POLE**



**PANEL MOUNT CUTOUT - 2 POLE, 1 HANDLE**



**PANEL MOUNT CUTOUT - 2 POLE, 2 HANDLE**

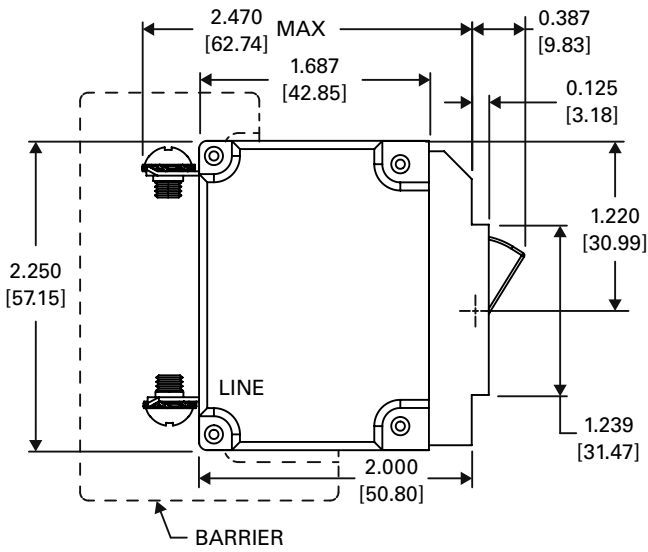


**NOTES:**

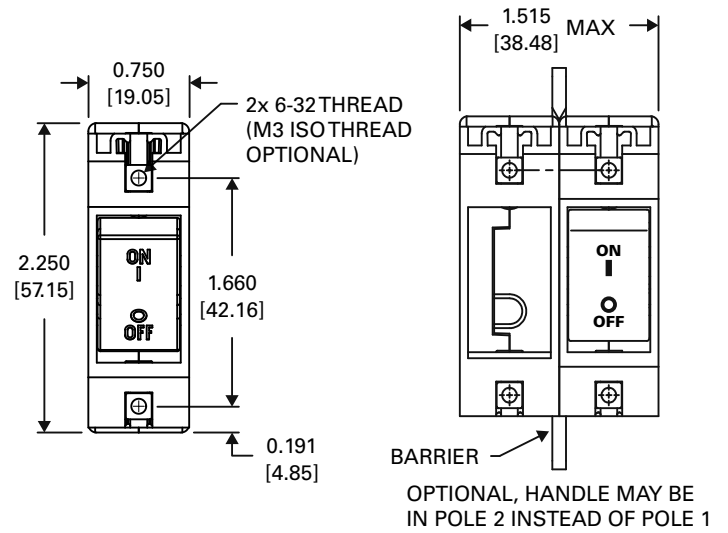
1. All mounting inserts shall be utilized when panel mounting circuit breakers. Panel mounting screws shall have recommended torque applied: 6/32 mounting inserts 6 - 8 inch pounds. M3 mounting inserts 4 - 5 inch pounds.
2. Panel mounting screws shall not extend beyond back of mounting panel more than specified mounting insert depth.
3. Mounting detail tolerance:  $\pm 0.005$  [0.13] unless noted.

# CONFIGURATIONS: LEJBX ROCKER HANDLE

## SINGLE POLE

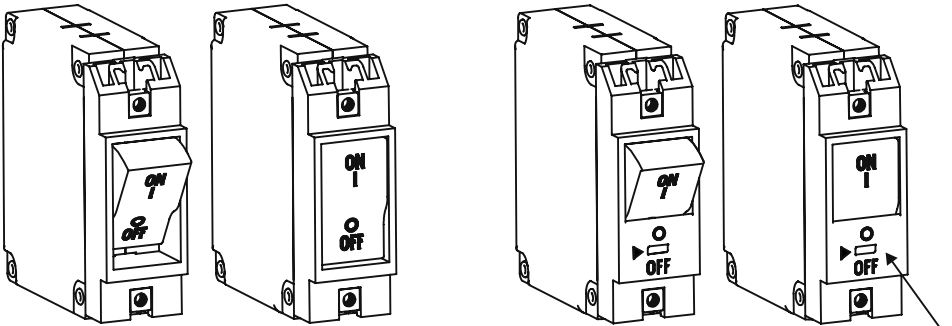


## TWO POLE



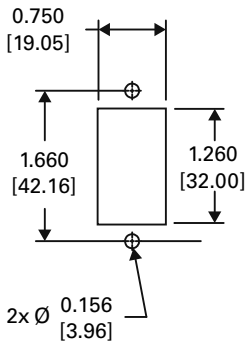
## BX HANDLE WITHOUT GUARD

## GUARD (LIMITED ACCESS ACTUATE-OFF)

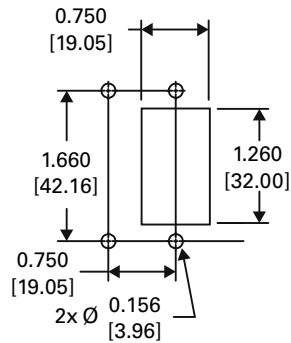


ACCESS TO ACTUATE OFF IS LIMITED TO A DEVICE SMALLER THAN 0.069 [1.75] x 0.155 [3.94]

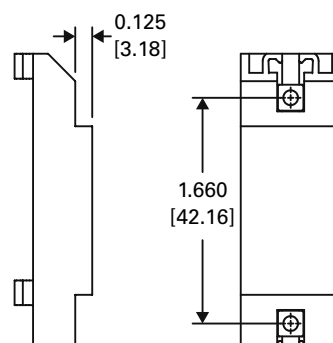
## PANEL MOUNT CUTOUT (1 POLE)



## PANEL MOUNT CUTOUT (2 POLE)

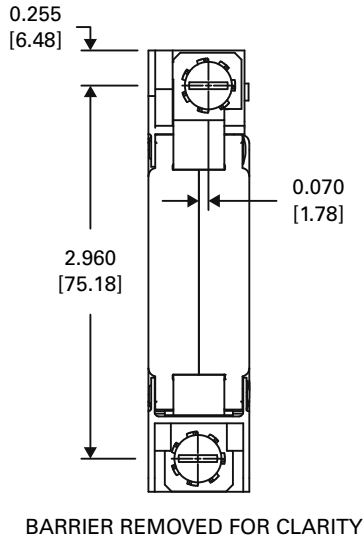
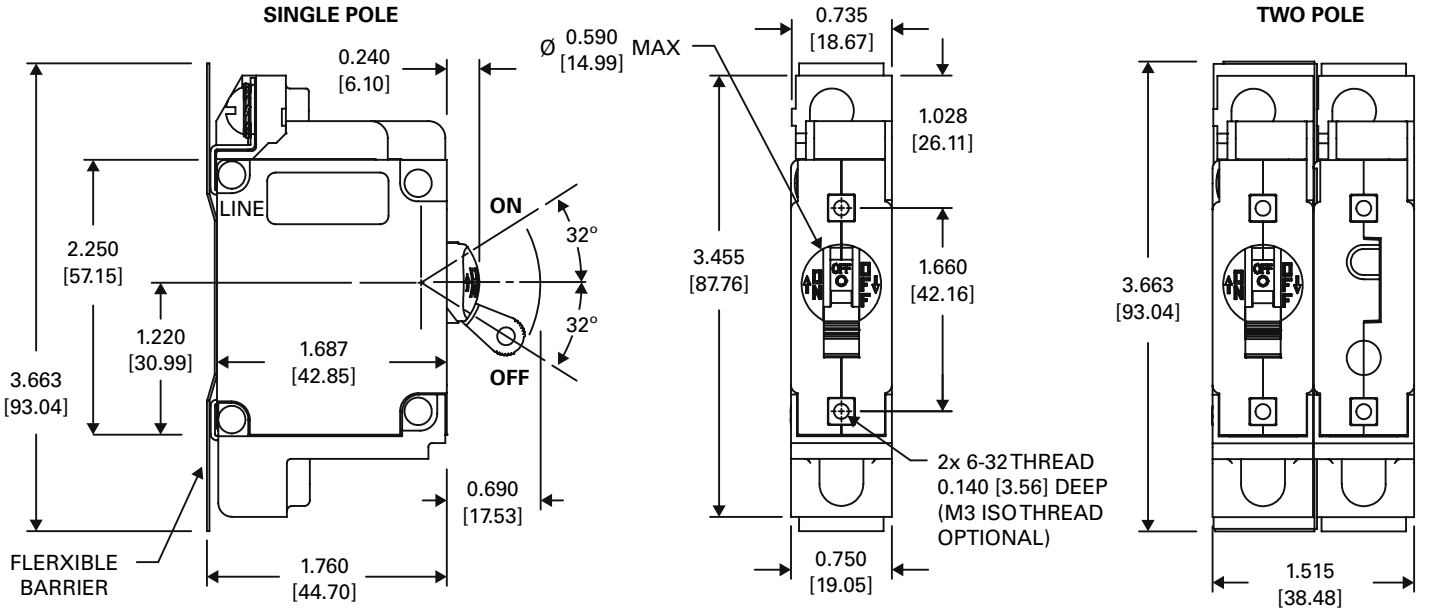


## PANEL PLUG (CONSULT FACTORY FOR AVAILABILITY)

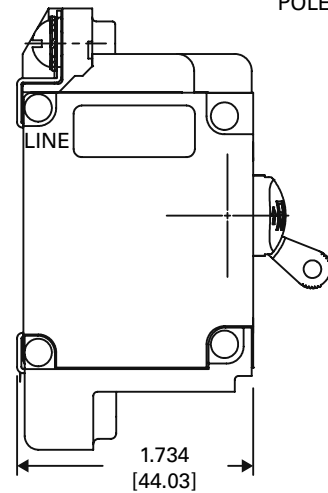


- P/N: 121-710-2450  
6-32 THD. (BLACK)
- P/N: 121-710-2451  
M3 THD. (BLACK)
- P/N: 121-450-3000  
6-32 THD. (BLACK)
- P/N: 121-450-3001  
M3 THD. (BLACK)

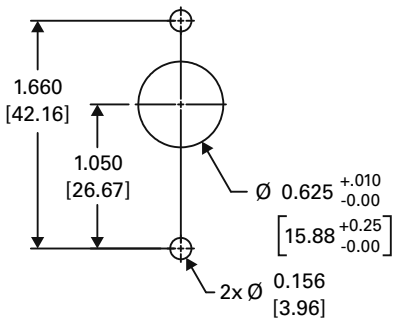
● CONFIGURATIONS: LEJA, TOGGLE HANDLE



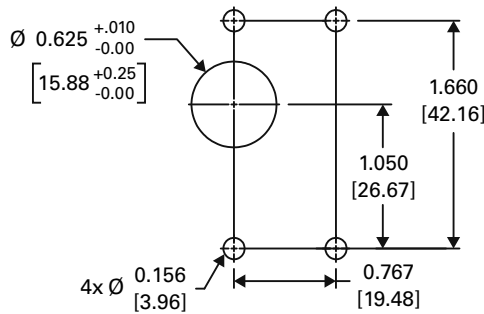
OPTIONAL, HANDLE MAY BE IN POLE 1 INSTEAD OF POLE 2



PANEL MOUNT CUTOUT - 1 POLE



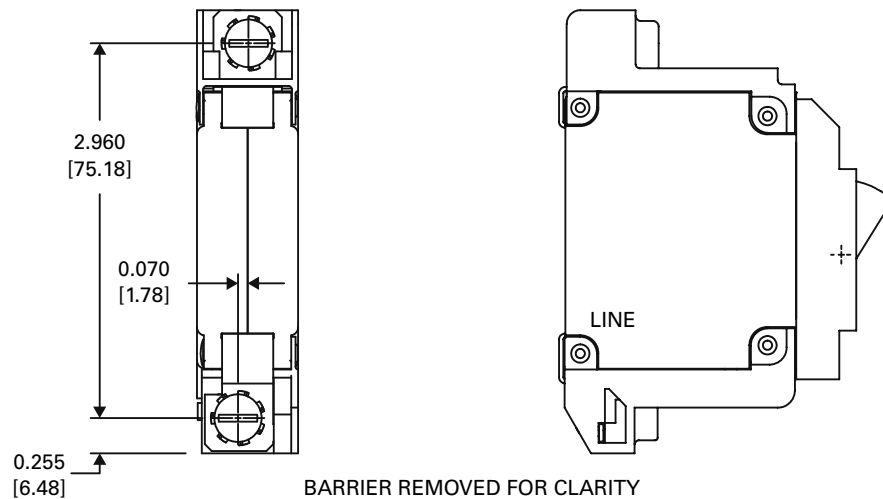
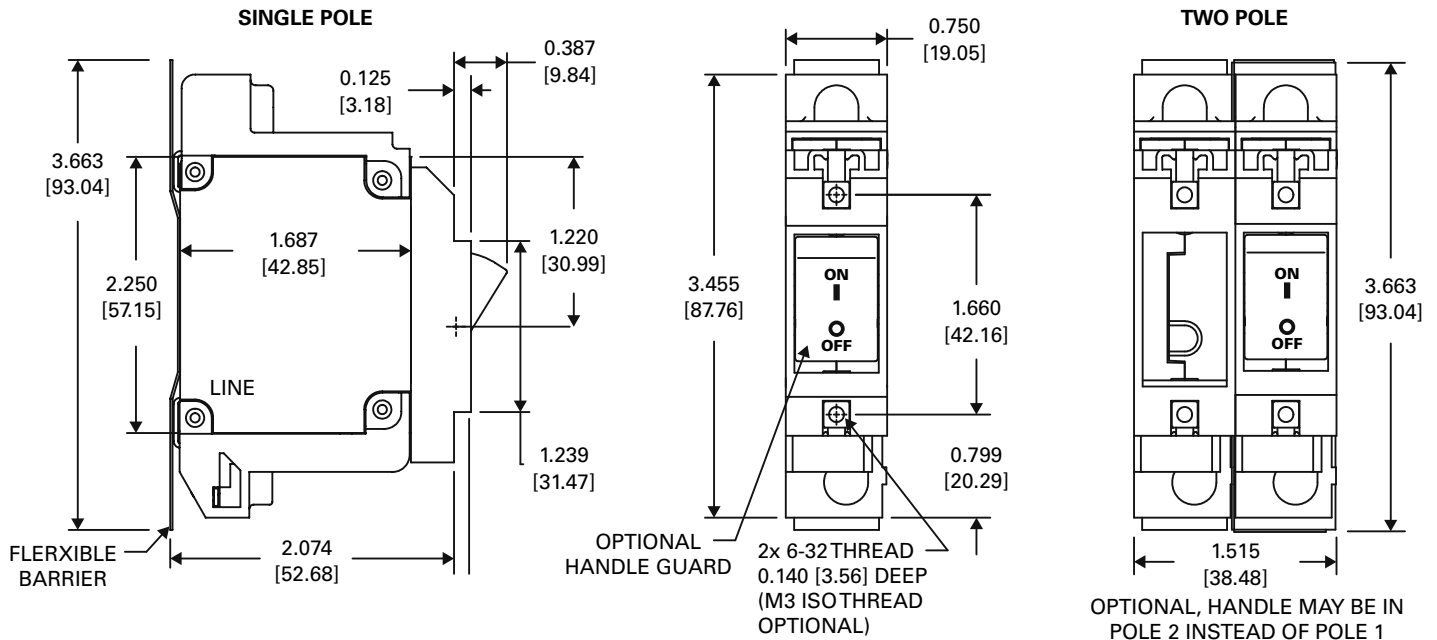
PANEL MOUNT CUTOUT - 2 POLE, 1 HANDLE



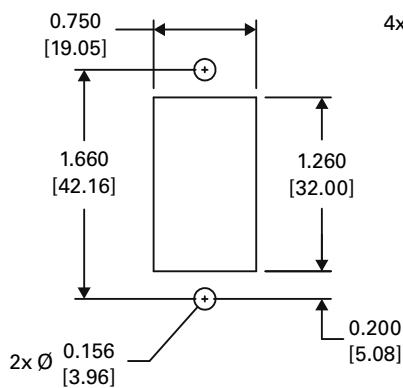
Notes:

1. All mounting inserts shall be utilized when panel mounting circuit breakers. Panel mounting screws shall have recommended torque applied: 6/32 mounting inserts 6 - 8 inch pounds. M3 mounting inserts 4 - 5 inch pounds.
2. Panel mounting screws shall not extend beyond back of mounting panel more than specied mounting insert depth.
3. Mounting detail tolerance:  $\pm 0.005$  [0.13] unless noted.

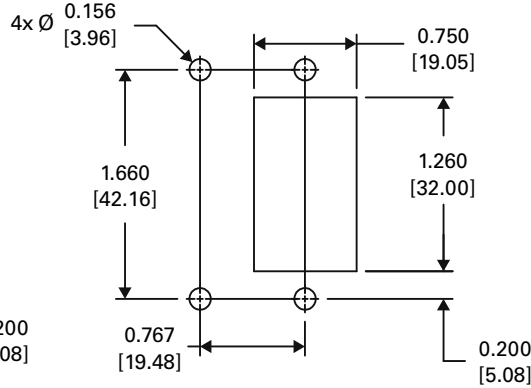
# CONFIGURATIONS: LEJBXA ROCKER HANDLE



## PANEL MOUNT CUTOUT - 1 POLE



## PANEL MOUNT CUTOUT - 2 POLE

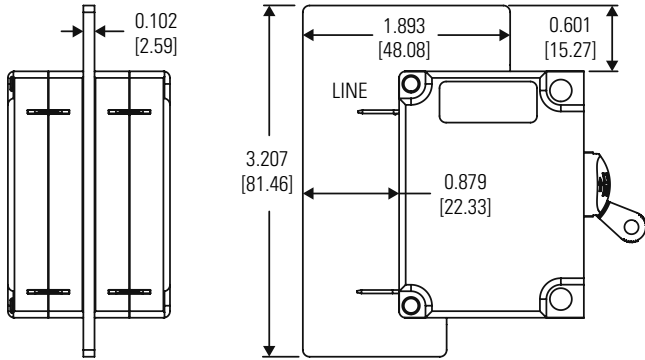


### Notes:

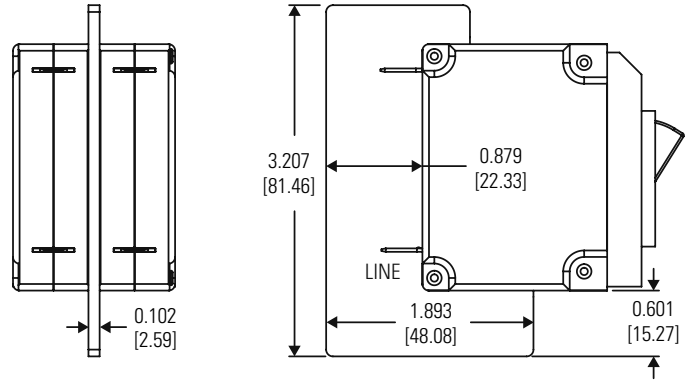
1. All mounting inserts shall be utilized when panel mounting circuit breakers. Panel mounting screws shall have recommended torque applied: 6/32 mounting inserts 6 - 8 inch pounds. M3 mounting inserts 4 - 5 inch pounds.
2. Panel mounting screws shall not extend beyond back of mounting panel more than specied mounting insert depth.
3. Mounting detail tolerance:  $\pm 0.005$  [0.13] unless noted.

# BARRIER OPTIONS FOR MULTI-POLE UNITS

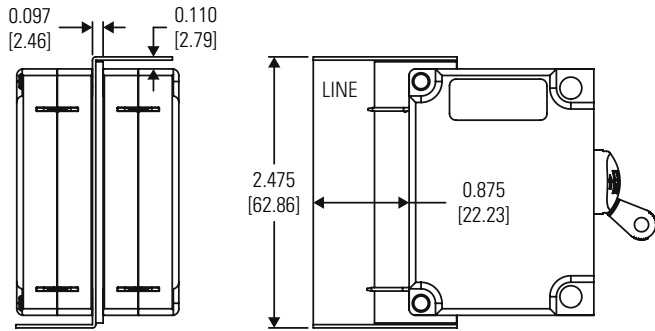
## STANDARD BARRIER - TOGGLE HANDLE



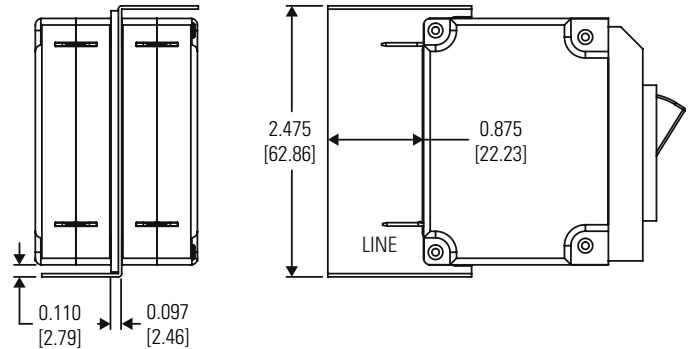
## STANDARD BARRIER - BX HANDLE



## OPTIONAL (-Z) BARRIER - TOGGLE HANDLE

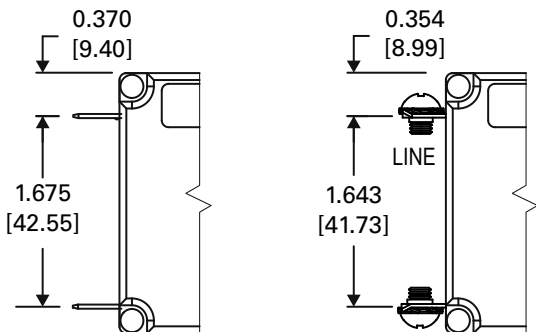


## OPTIONAL (-Z) BARRIER - BX HANDLE

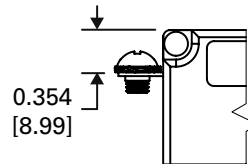


# TERMINAL OPTIONS

## STANDARD - QUICK CONNECT & SCREW TERMINALS



## OPTIONAL - FLAT BUS CONNECT SCREW TERMINAL

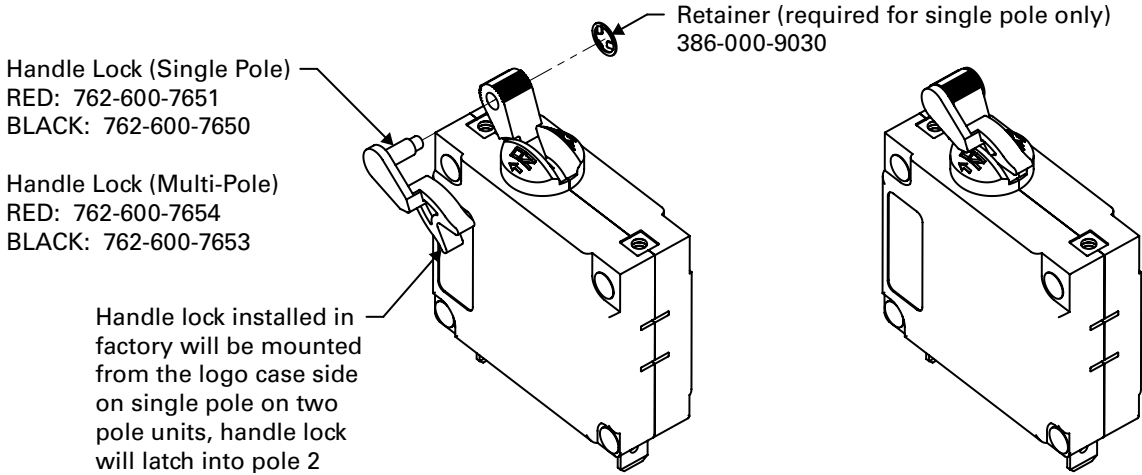


### NOTES:

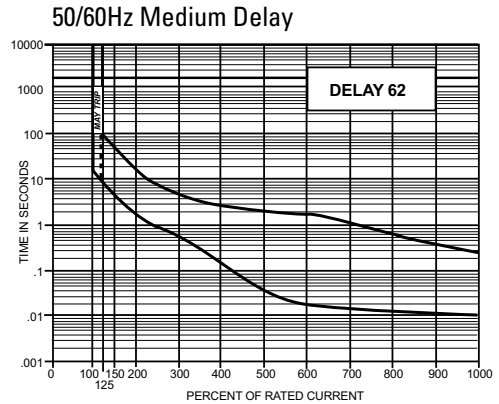
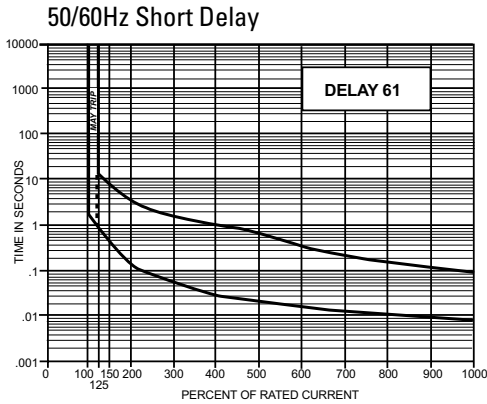
1. Terminals: Quick Connect = 0.250 [6.35] wide x 0.031 [0.79] thick  
Screw = 10-32 or M5 x 0.8  
TÜV approval with screw terminals include external tooth lockwashers
2. 10000 AIC available only with screw terminals

## OPTIONAL HANDLE LOCK FOR TOGGLE HANDLE

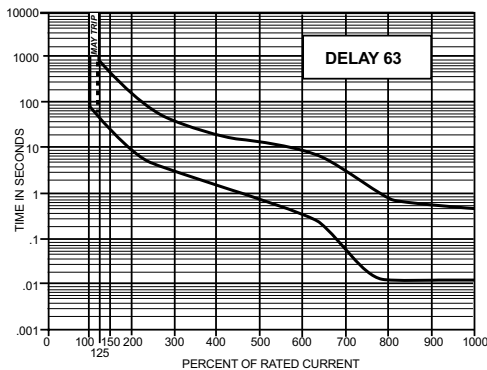
A handle lock option is available to prevent accidental actuation of the handle. The handle lock may be used in the ON or OFF position. This option is available pre-assembled or separately. Consult factory for ordering information.



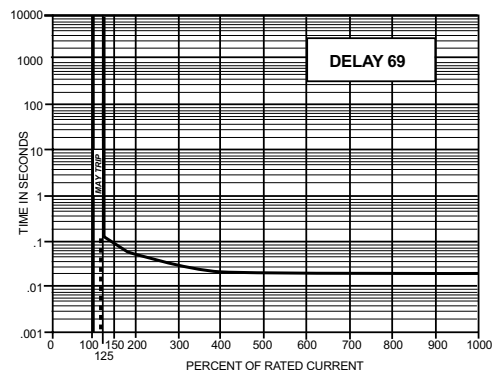
## DELAY CURVES



50/60Hz Long Delay (Motor Start)



50/60Hz 125% Instant Trip



## PERCENTAGE OF RATED CURRENT VS TRIP TIME IN SECONDS

| Percentage of Rated Current vs Trip Time in Seconds at +25°C (Vertical Mount) |         |            |           |             |           |            |             |            |
|---|---------|------------|-----------|-------------|-----------|------------|-------------|------------|
| Delay   | 100%    | 125%       | 150%      | 200%        | 400%      | 600%       | 800%        | 1000%      |
| 61  | No Trip | .700 to 12 | 35 to 7.0 | .130 to 3.0 | 030 to 1  | .015 to .3 | .01 to .15  | .008 to .1 |
| 62  | No Trip | 10 to 120  | 6 to 60   | 2 to 25     | .2 to 3.0 | .015 to 2  | .015 to .8  | .01 to .25 |
| 63  | No Trip | 50 to 700  | 30 to 400 | 10 to 150   | 1.5 to 20 | .015 to 10 | .013 to .85 | .013 to .5 |
| 69  | No Trip | 0.120 max  | 0.100 max | 0.050 max   | 0.022 max | 0.017 max  | 0.017 max   | 0.017 max  |

| Inrush Pulse Tolerance |                                 |
|------------------------|---------------------------------|
| Delay                  | Pulse Tolerance                 |
| 61, 62, 63             | 10 times rated current (approx) |

The table above provides a comparison of inrush pulse tolerance for each of the 50/60Hz delays. Pulse tolerance is defined as a single pulse of half sine wave peak current amplitude of 8 milliseconds duration that will not trip the circuit breaker. Consult Sensata Technologies for further assistance.

| Typical Resistance / Impedance |                    |
|--------------------------------|--------------------|
| Current Ratings (Amps)         | Impedance          |
|                                | AC, 50/60Hz (ohms) |
|                                | 61, 62, 63, 69     |
| 2.00                           | 0.29               |
| 5.00                           | 0.051              |
| 10.0                           | 0.016              |
| 15.0                           | 0.008              |
| 20.0                           | 0.006              |

DCR and Impedance based on 100% rated current applied and stabilized for a minimum of one hour. Tolerance .05-2.5 amperes ± 20%; 2.6 -20 amperes ± 25%.

Consult factory for special values and for coil impedance of delays not shown.



# ORDERING OPTIONS

**LEJBXA - 66 - 1 - 62 - 20.0 - AG - M6 - T**

## Type & Handle

### Step 1a

**LEJ:** One Handle per Unit, UL 489 Listed, CSA, TÜV\*  
**LEJH:** One Handle per Pole, UL 489 Listed, CSA, TÜV\*  
**LUJ:** One Handle per Unit, UL 489 Listed  
**LUJH:** One Handle per Pole, UL 489 Listed

### Step 1b (optional)

Standard toggle & mounting (no entry, proceed to step 1c)

**BX:** BX at rocker with integral mounting

### Step 1c options must be followed

by 6 or 66 for screw terminals.

**F:** Flat bus connect screw terminal (ex. LUXBXF)

**A:** Low depth construction (ex. LEJA)

**V:** Low profile screw terminal

\* TÜV approval (EN60947-2) requires "T" added to end of part number

"BX" versions are single handle construction only. 2-pole units

handle may be located on either pole, other than standard handle locations shown. Units must be ordered as non descript part numbers.

## Poles & Terminals

**1:** Single Pole, Quick Connect Terminals

**11:** Two Poles, Quick Connect Terminals

**6:** Single Pole, Screw Terminals\*

**66:** Two Poles, Screw Terminals\*

\*Screw terminals only for 10KAIC

## Internal Configuration

**1:** Series

## Frequency & Delay

**61:** 50/60Hz short delay

**62:** 50/60Hz Medium Delay

**63:** 50/60Hz Long Delay (Motor Start)

**69:** 50/60Hz 125% Instant Trip

## Rated Current

Use three numbers in build (2.00 or 15.0 or 20.0) Required value between 2.00 amps minimum and

30.0 amps maximum, full integers only (specials available upon request)

## Additional Options

**A:** Metric thread mounting inserts and terminal hardware

**G:** Handle guard w/ limited access (available for BX versions only)

**L:** Handle lock

**M:** Handle in opposite pole (2-pole only)

**Z:** Optional "Z" barrier (not available on "A" low depth)

**R:** 240VAC, 10KAIC

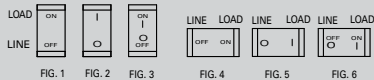
**E:** 277VAC, 10KAIC

## Handle Colors, Indicators & Markings

| Toggle Handle       |        | BX Rocker Handle                     |                  |               |           | Vertical Mounting |            | Horizontal Mounting |            |
|---------------------|--------|--------------------------------------|------------------|---------------|-----------|-------------------|------------|---------------------|------------|
| Marked On-Off I - O |        | Two-Color Rocker, Marking Detail "A" |                  |               |           | I-O               | ON-OFF I-O | I-O                 | ON-OFF I-O |
|                     |        | Rocker Handle Color                  | Indicating Color | Marking Color | Indicates |                   |            |                     |            |
| -01                 | Black  |                                      |                  |               |           | I-O               | ON-OFF I-O | I-O                 | ON-OFF I-O |
| -11                 | Yellow |                                      |                  |               |           | -M2               | -M3        | -M5                 | -M6        |
| -21                 | Red    | Black                                | White            | White         | OFF       | -N2               | -N3        | -N5                 | -N6        |
| -31                 | Blue   | Black                                | Red              | Red           | OFF       | -P2               | -P3        | -P5                 | -P6        |
| -41                 | Green  | Black                                | Green            | Green         | OFF       | -R2               | -R3        | -R5                 | -R6        |
| -61                 | Orange | Black                                | Yellow           | Yellow        | OFF       |                   |            |                     |            |
| -91                 | White  |                                      |                  |               |           |                   |            |                     |            |

For BX: Bezel of BX is black. BX markings are same color as indicating color. Consult factory for other marking options.

Note, these are just a few of the options/orientations/colors available, please consult the factory for additional information.



MARKING DETAIL "A"

NOTE: "ON" actuates towards the "up" and "right" direction

## Agency Approval

**T:** TÜV approved certified to EN60947-2 Includes the CE mark

**V:** TÜV and CCC Approved

**C:** CCC Approved

## WARNINGS



### RISK OF MATERIAL DAMAGE AND HOT ENCLOSURE

- The product's side panels may be hot, allow the product to cool before touching
- Follow proper mounting instructions including torque values
- Do not allow liquids or foreign objects to enter this product

**Failure to follow these instructions can result in serious injury, or equipment damage.**



### HAZARD OF ELECTRIC SHOCK, EXPLOSION OR ARC FLASH

- Disconnect all power before installing or working with this equipment
- Verify all connections and replace all covers before turning on power

**Failure to follow these instructions can result in death or serious injury.**

Datasheets provided by Sensata Technologies, Inc., its subsidiaries and/or affiliates ("Sensata") are solely intended to assist third parties ("Buyers") who are developing systems that incorporate Sensata products (also referred to herein as "components"). Buyer understands and agrees that Buyer remains responsible for using its independent analysis, valuation, and judgment in designing Buyer's systems and products. Sensata datasheets have been created using standard laboratory conditions and engineering practices. Sensata has not conducted any testing other than that specifically described in the published documentation for a particular datasheet. Sensata may make corrections, enhancements, improvements, and other changes to its datasheets or components without notice.

Buyers are authorized to use Sensata datasheets with the Sensata component(s) identified in each particular datasheet. HOWEVER, NO OTHER LICENSE, EXPRESS OR IMPLIED, BY ESTOPPEL OR OTHERWISE TO ANY OTHER SENSATA INTELLECTUAL PROPERTY RIGHT, AND NO LICENSE TO ANY THIRD PARTY TECHNOLOGY OR INTELLECTUAL PROPERTY RIGHT, IS GRANTED HEREIN. SENSATA DATASHEETS ARE PROVIDED "AS IS". SENSATA MAKES NO WARRANTIES OR REPRESENTATIONS WITH REGARD TO THE DATASHEETS OR USE OF THE DATASHEETS, EXPRESS, IMPLIED, OR STATUTORY, INCLUDING ACCURACY OR COMPLETENESS. SENSATA DISCLAIMS ANY WARRANTY OF TITLE AND ANY IMPLIED WARRANTIES OF MERCHANTABILITY, FITNESS FOR A PARTICULAR PURPOSE, QUIET ENJOYMENT, QUIET POSSESSION, AND NON-INFRINGEMENT OF ANY THIRD PARTY INTELLECTUAL PROPERTY RIGHTS WITH REGARD TO SENSATA DATASHEETS OR USE THEREOF.

All products are sold subject to Sensata's terms and conditions of sale supplied at [www.sensata.com](http://www.sensata.com). SENSATA ASSUMES NO LIABILITY FOR APPLICATIONS ASSISTANCE OR THE DESIGN OF BUYERS' PRODUCTS. BUYER ACKNOWLEDGES AND AGREES THAT IT IS SOLELY RESPONSIBLE FOR COMPLIANCE WITH ALL LEGAL, REGULATORY, AND SAFETY-RELATED REQUIREMENTS CONCERNING ITS PRODUCTS, AND ANY USE OF SENSATA COMPONENTS IN ITS APPLICATIONS, NOTWITHSTANDING ANY APPLICATIONS-RELATED INFORMATION OR SUPPORT THAT MAY BE PROVIDED BY SENSATA.

Mailing Address: Sensata Technologies, Inc., 529 Pleasant Street, Attleboro, MA 02703, USA

## CONTACT US

### Regional head offices:

#### United States of America

Sensata Technologies

Attleboro, MA

**Phone:** 508-236-3800

**E-mail:** [support@sensata.com](mailto:support@sensata.com)

#### Netherlands

Sensata Technologies Holland B.V.

Hengelo

**Phone:** +31 74 357 8000

**E-mail:** [support@sensata.com](mailto:support@sensata.com)

#### China

Sensata Technologies China Co., Ltd.

Shanghai

**Phone:** +8621 2306 1500

**E-mail:** [support@sensata.com](mailto:support@sensata.com)