

PART NO. DESIGNATION

PTE7100 - 11 A A - 1 A 250B M .810 A

SENSATA INTERNAL CODE

PRESSURE PORT

- G1/4A DIN 3852-EA
- 1/4-19 PT (1/4-19 BSPT),(R1/4).....B
- 7/16-20 UNF SAE J1926-2.....C
- 1/4-18 NPTD

ELECTRICAL CONNECTOR
(DETAILS SEE PAGE 2)

- DIN 175301-803 A (18mm).....A
- M12x1 - 4 POLE.....B
- PACKARD METRI-PACK 150.....C
- FLY LEAD HARNESS (2m).....D
- DEUTSCH DT04-3P.....E

EXTERNAL SEAL RING

- NONE.....0
- FKM (VITON) SEAL RING.....1
ONLY FOR PRESSURE PORT OPTION A
- HNBR SEAL RING.....2
ONLY FOR PRESSURE PORT OPTION C

MOQ

- A.....MOQ500pcs
- B.....MOQ50pcs

MATING CONNECTOR AND SNUBBER

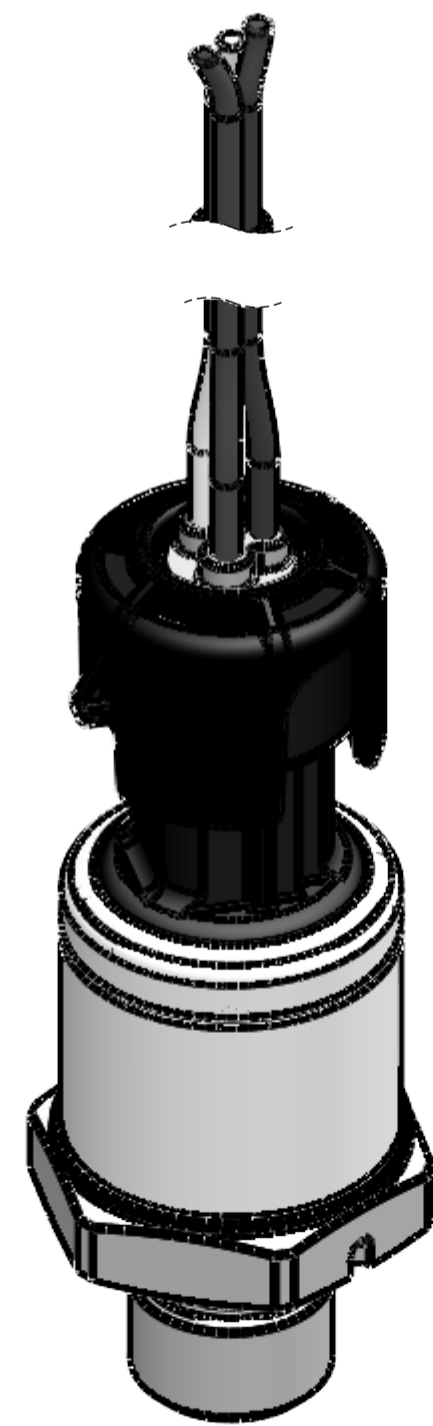
- N.....NONE
- M.....MATING CONNECTOR, NO SNUBBER
MATING CONNECTOR ONLY FOR DIN 175301-803A
- S.....NO MATING CONNECTOR, SNUBBER
SNUBBER WITH $\varnothing 0.5\text{mm}$ DAMPING HOLE
- A.....MATING CONNECTOR, SNUBBER
MATING CONNECTOR ONLY FOR DIN 175301-803A
SNUBBER WITH $\varnothing 0.5\text{mm}$ DAMPING HOLE

PRESSURE RANGE

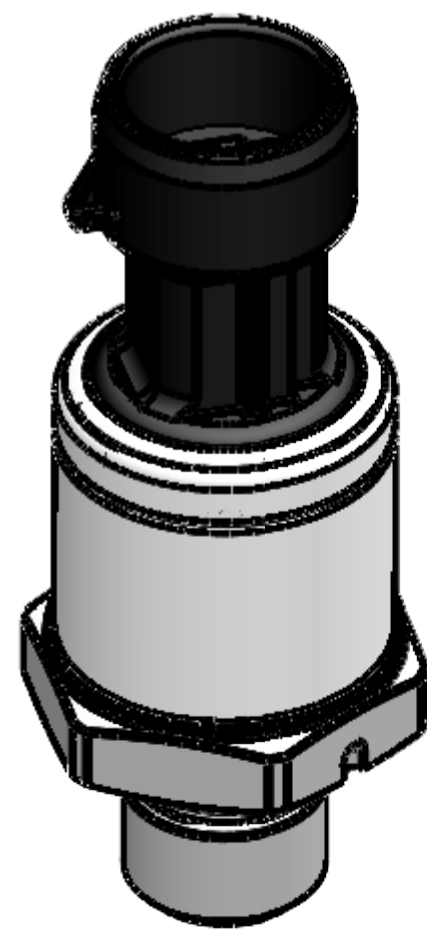
- 050B.....0...50barG
- 060B.....0...60barG
- 100B.....0...100barG
- 160B.....0...160barG
- 200B.....0...200barG
- 250B.....0...250barG
- 350B.....0...350barG
- 400B.....0...400barG
- 500B.....0...500barG
- 600B.....0...600barG

OUTPUT/INPUT

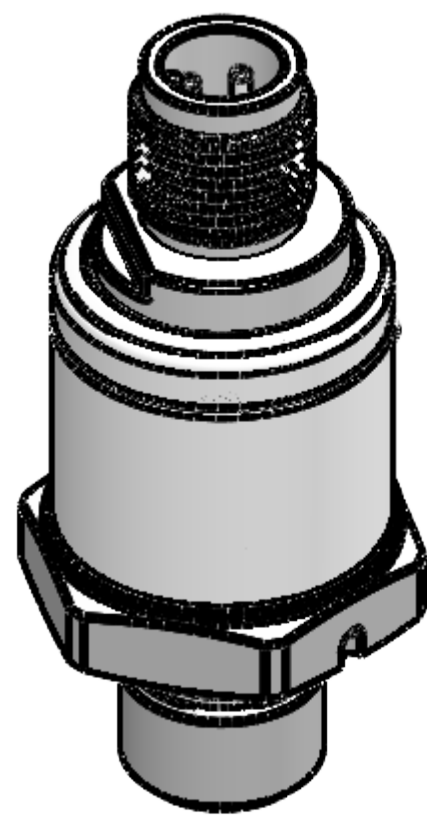
- A.....4-20 mA/8-32VDC
- B.....0.5-4.5VDC/5 \pm 0.25VDC
- C.....0-5VDC/8-32VDC
- D.....0-10 VDC/12-32VDC
- E.....1-5VDC/8-32VDC
- F.....0.5-4.5VDC/8-32VDC



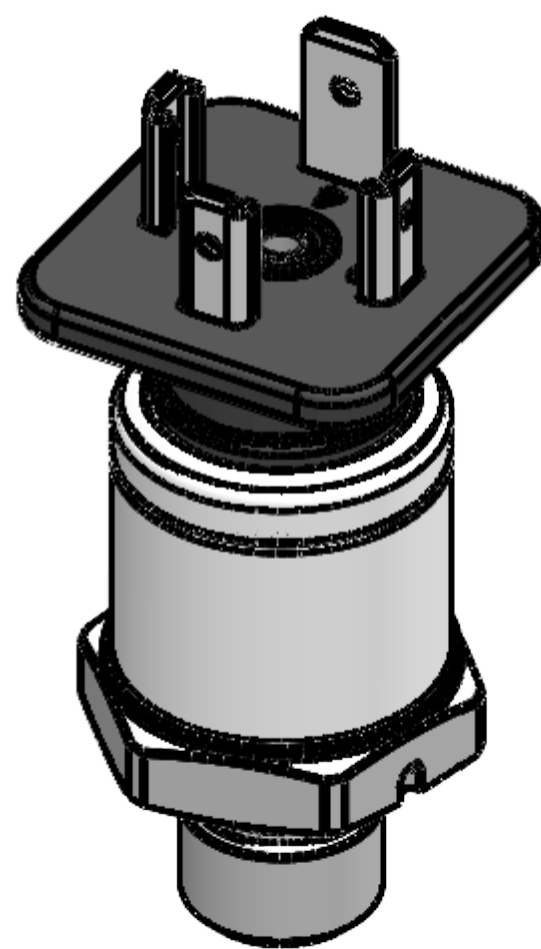
**FLY LEAD HARNESS
MODEL SHOWN**



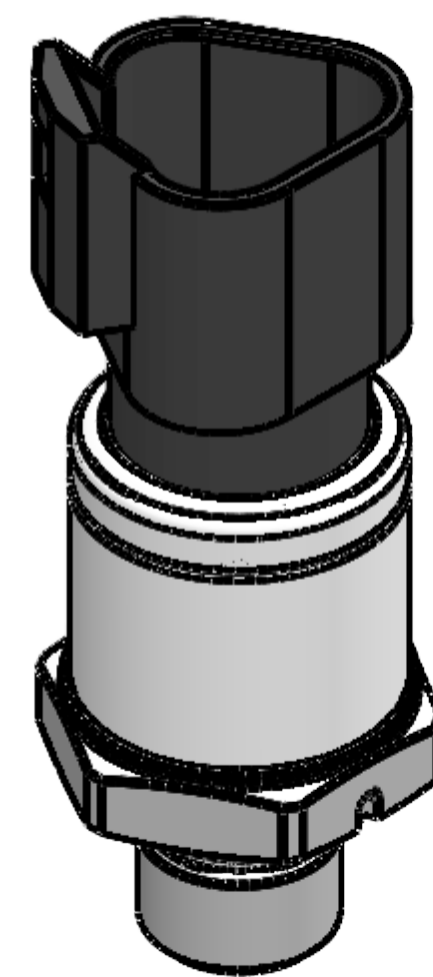
**METRI-PACK 150
MODEL SHOWN**



**M12X1 4-POLE
MODEL SHOWN**



**DIN 175301-803A
MODEL SHOWN**



**DEUTSCH DT04-3P
MODEL SHOWN**

ZONE	REV	DESCRIPTION	ECO NUMBER	DATE	APPROVED
	D	UPDATED SPEC: AY	ECO-406197	31-DEC-2020	CX. HU

from 0 to ...	barG	50	60	100	160	200	250	350	400	500	600	...
Proof pressure	barG	200	200	200	500	500	500	800	800	1200	1200	...
Burst pressure	barG	2000	2000	2000	2500	2500	2500	4000	4000	4000	4000	...

Electrical				
Output signal	0...10 VDC	0.5...4.5 VDC	4...20mA	0...1...5/0.5...4.5 VDC
Operating supply voltage	12...32 VDC	5 \pm 0.25 VDC	8...32 VDC	8...32 VDC
Overvoltage protection	min. 36 VDC	Not Applicable	min. 36 VDC	min. 36 VDC
Short-circuit proofness*	YES	YES	Not Applicable	YES
Reverse polarity protection*	YES	YES	YES	YES
Load	$\geq 4.7 \text{ k}\Omega$	$\geq 4.7 \text{ k}\Omega$	$\leq (\text{Vs}-8\text{VDC})/(\text{20mA})$	$\geq 4.7 \text{ k}\Omega$
*Short spec	for min. 1 minute			
*Reverse spec	for min. 10 seconds on assigned pins			
Response time	< 2ms			

Temperature	
Operating	-40°C to +100°C
Medium	-40°C to +125°C
Storage*	-40°C to +125°C
* Storage temperature spec	PVC flying lead are rated for storage temperature range of -40°C to +105°C

Accuracy	
Basic Accuracy*	$\pm 0.5\%$ FS @ 25°C
BFSL Accuracy*	$\pm 0.25\%$ FS @ 25°C
Non-linearity*	$\pm 0.2\%$ FS
Non-repeatability	$\pm 0.1\%$ FS
Total error band	$\pm 1.5\%$ FS @ -20°C to 85°C

*Basic Accuracy	Including non-linearity, hysteresis, zero and span error (corresponds to measured error per IEC 61298-2).
*BFSL Accuracy	Including non-linearity, hysteresis and non-repeatability, excluding zero and span error (corresponds to the smart options per IEC 60770-1, the instrument is equipped with facilities for offset and span adjustment).
*Non-linearity spec	BFSL (best-fit-straight-line) according to IEC 61298-2

Conformity													
RoHS & REACH	YES												
CE	according to EMC Directive 2014/30/EU, EN 61326 Emission and Immunity (industrial locations)												
Radiated Immunity	100V/m @ 80...200MHz; 200V/m @ 200...2700MHz, according to ISO 11452-2												
Vibration resistance	30g (sine) min. according to IEC 60068-2-6												
Shock resistance	500g min. according to IEC 60068-2-27, except fly lead with harness												
Durability	> 10 X 10 ⁶ cycles												
Ingress protection per IEC 60 529	<table border="1"> <tr> <th>FLY LEAD HARNESS</th> <th>METRI-PACK 150</th> <th>M12x1 4-POLE</th> <th>DIN 175301 - 803A</th> <th>DEUTSCH DT04-3P</th> <th>...</th> </tr> <tr> <td>IP67</td> <td>IP67</td> <td>IP67</td> <td>IP65</td> <td>IP67</td> <td>...</td> </tr> </table>	FLY LEAD HARNESS	METRI-PACK 150	M12x1 4-POLE	DIN 175301 - 803A	DEUTSCH DT04-3P	...	IP67	IP67	IP67	IP65	IP67	...
FLY LEAD HARNESS	METRI-PACK 150	M12x1 4-POLE	DIN 175301 - 803A	DEUTSCH DT04-3P	...								
IP67	IP67	IP67	IP65	IP67	...								

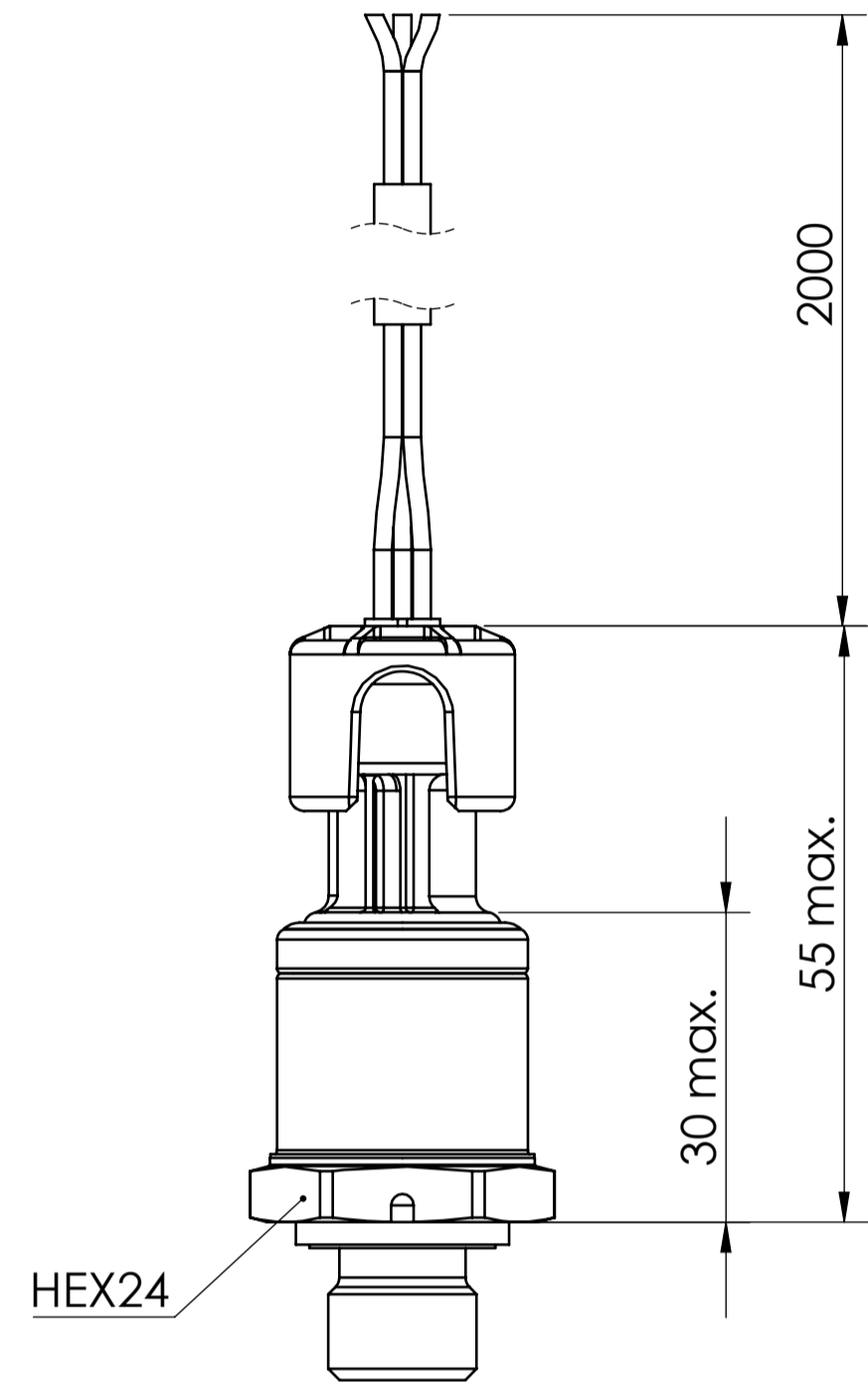
Media compatibility
All class II fluid and gases compatible with port material stainless steel 17-4PH (1.4542)

<p>ALL RIGHT RESERVED</p> <p>NEITHER THIS PRINT NOR THE INFORMATION CONTAINED HEREON IS TO BE USED AGAINST THE INTERESTS OF SENSATA TECHNOLOGIES OR AGAINST THE INTERESTS OF ANY OF ITS AFFILIATED COMPANIES OR WHOLLY OWNED SUBSIDIARIES.</p>		<p>Sensata Technologies</p> <p>18 CHUANGXIN ROAD XINBEI DISTRICT CHANGZHOU CHINA</p>	
<p>DRAWN W. XU</p> <p>DATE 19-MAY-2017</p> <p>ENGINEER W. XU</p> <p>DATE 19-MAY-2017</p> <p>APPROVED L. LI</p> <p>DATE 19-MAY-2017</p> <p>APPROVED</p> <p>DATE</p>	<p>INTERPRET DIMENSIONING AND TOLERANCING PER ASME Y14.5-2009, UNLESS OTHERWISE SPECIFIED DIMENSIONS ARE IN MILLIMETERS.</p> <p>TOLERANCES</p> <p>LINEAR</p> <p>ANGULAR</p>	<p>TITLE</p> <p>PRESSURE TRANSDUCER</p>	
<p>DO NOT SCALE DRAWING</p> <p>METHOD</p> <p>SHRINKAGE PROTECTION</p>		<p>SIZE</p> <p>A1</p>	<p>NUMBER</p> <p>PTE7100-TAB-ENV</p> <p>REV</p> <p>D</p>
<p>SCALE</p> <p>2:1</p>		<p>SHEET</p> <p>1 OF 3</p>	

BUILT IN ELECTRICAL CONNECTOR OPTIONS

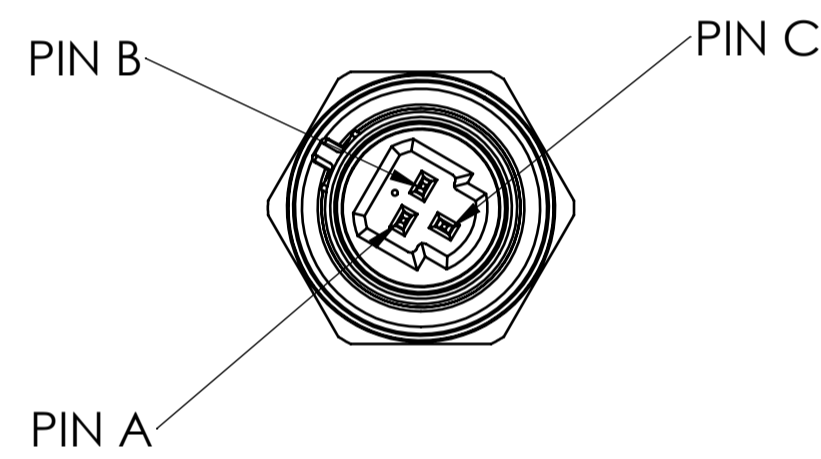
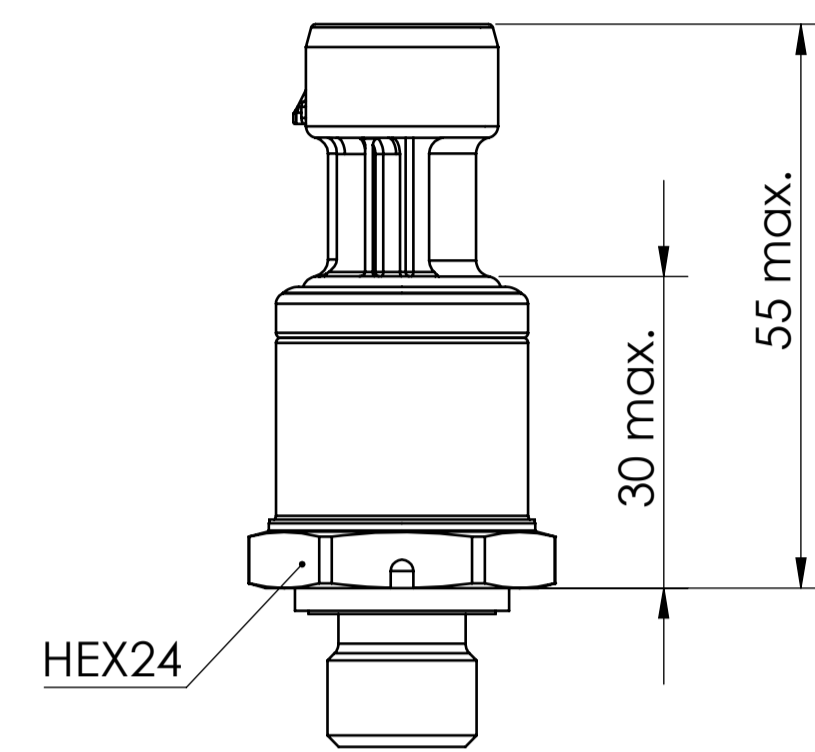
(PRESSURE PORT G1/4A DIN 3852-E SHOWN)

FLY LEAD HARNESS (2m) CONNECTOR



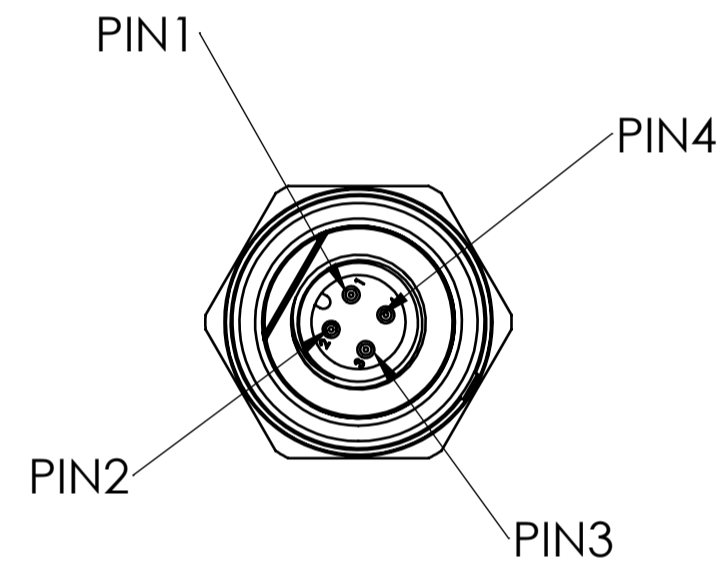
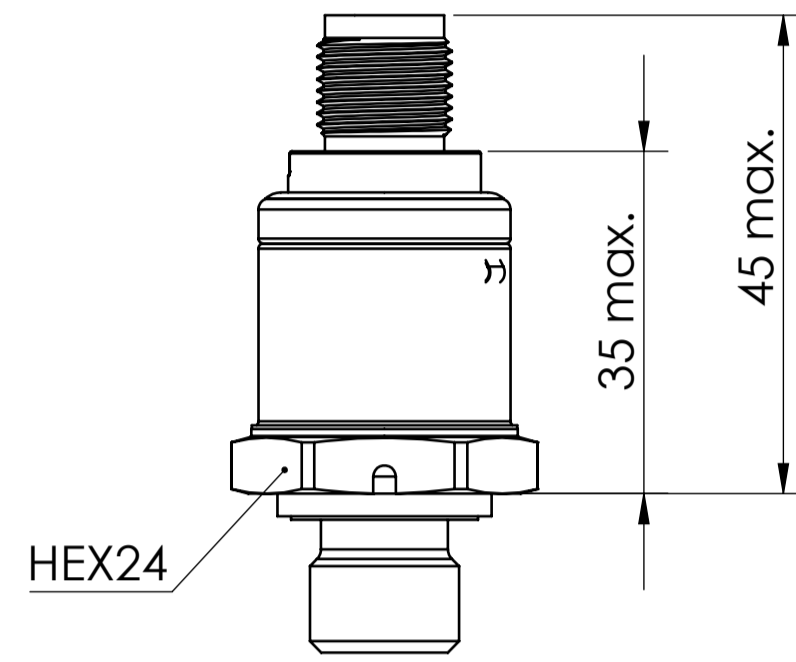
OUTPUT	BLACK	RED	WHITE
VOLTAGE	V-	V+	Vout
CURRENT	Iout	V+	...

PACKARD METRI-PACK 150 CONNECTOR



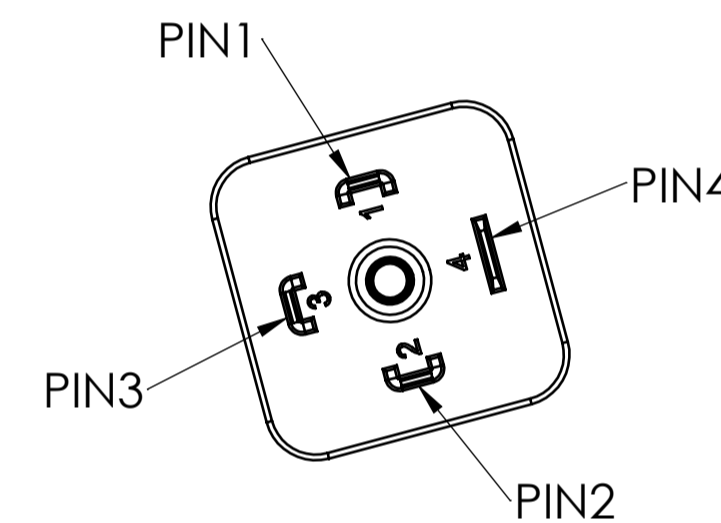
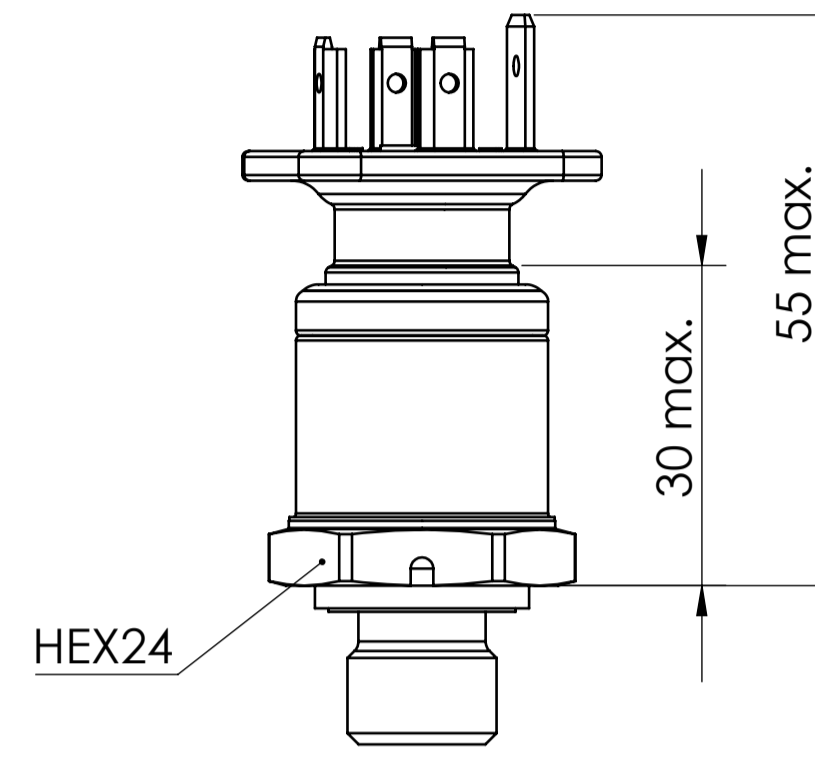
OUTPUT	PIN A	PIN B	PIN C
VOLTAGE	V-	V+	Vout
CURRENT	Iout	V+	...

M12x1 4-POLE CONNECTOR



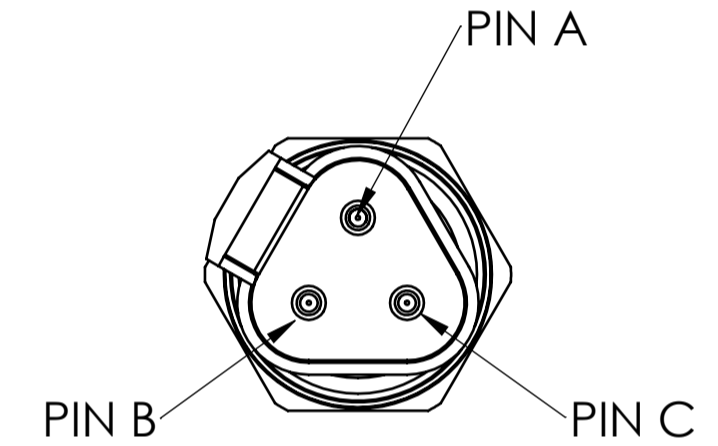
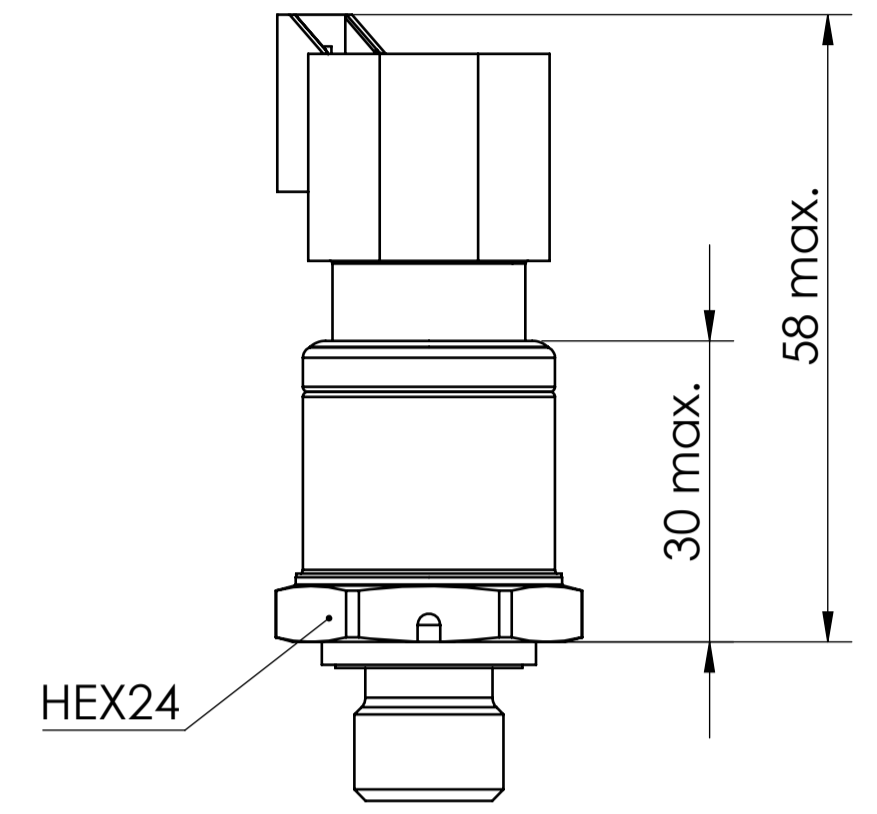
OUTPUT	PIN 1	PIN 2	PIN 3	PIN 4
VOLTAGE	V+	...	V-	Vout
CURRENT	V+	...	Iout	...

DIN 175301-803A 18mm CONNECTOR



OUTPUT	PIN 1	PIN 2	PIN 3	PIN 4
VOLTAGE	V+	V-	Vout	...
CURRENT	V+	Iout

DEUTSCH DT04-3P CONNECTOR



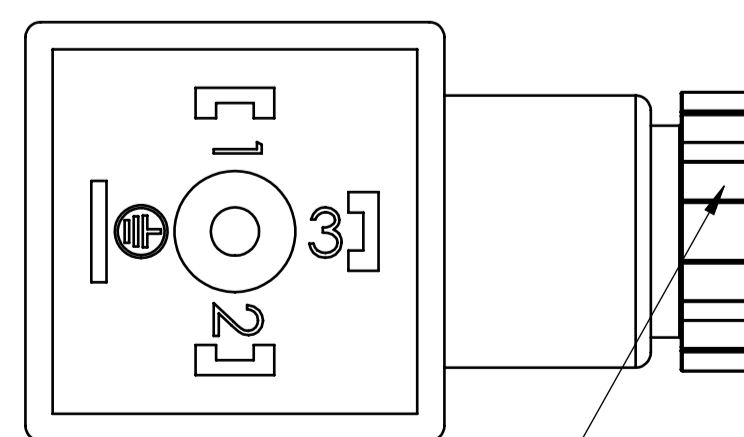
OUTPUT	PIN A	PIN B	PIN C
VOLTAGE	V+	V-	Vout
CURRENT	V+	Iout	...

NOTE:
 V+: Supply Voltage V-: Ground
 Vout: Output Voltage Iout: Output Current
 ...: Not Connected

MATING CONNECTOR OPTIONS

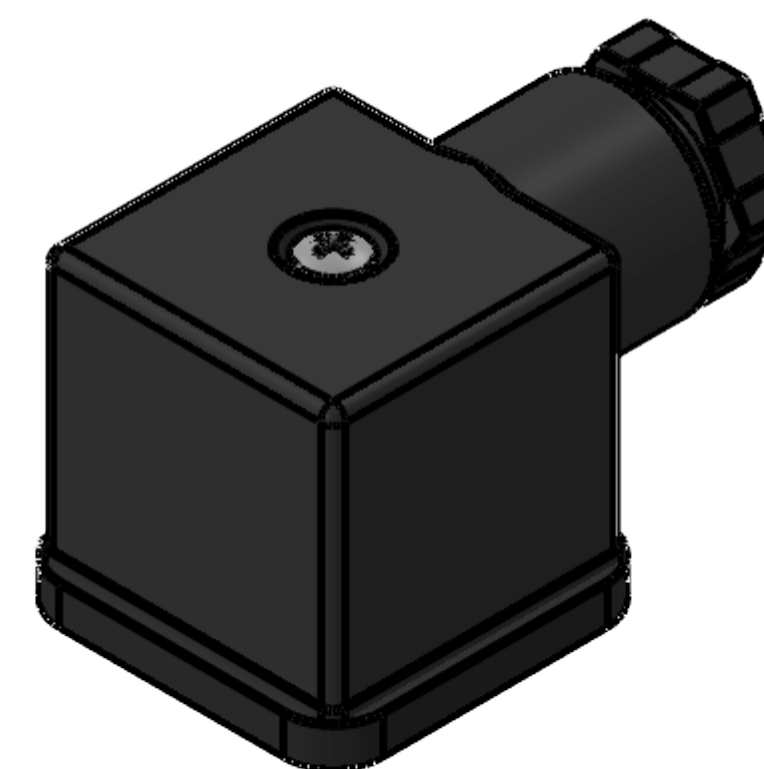
(ONLY DIN 175301-803A 18mm AVAILABLE)

DIN 175301-803A 18mm MATING CONNECTOR



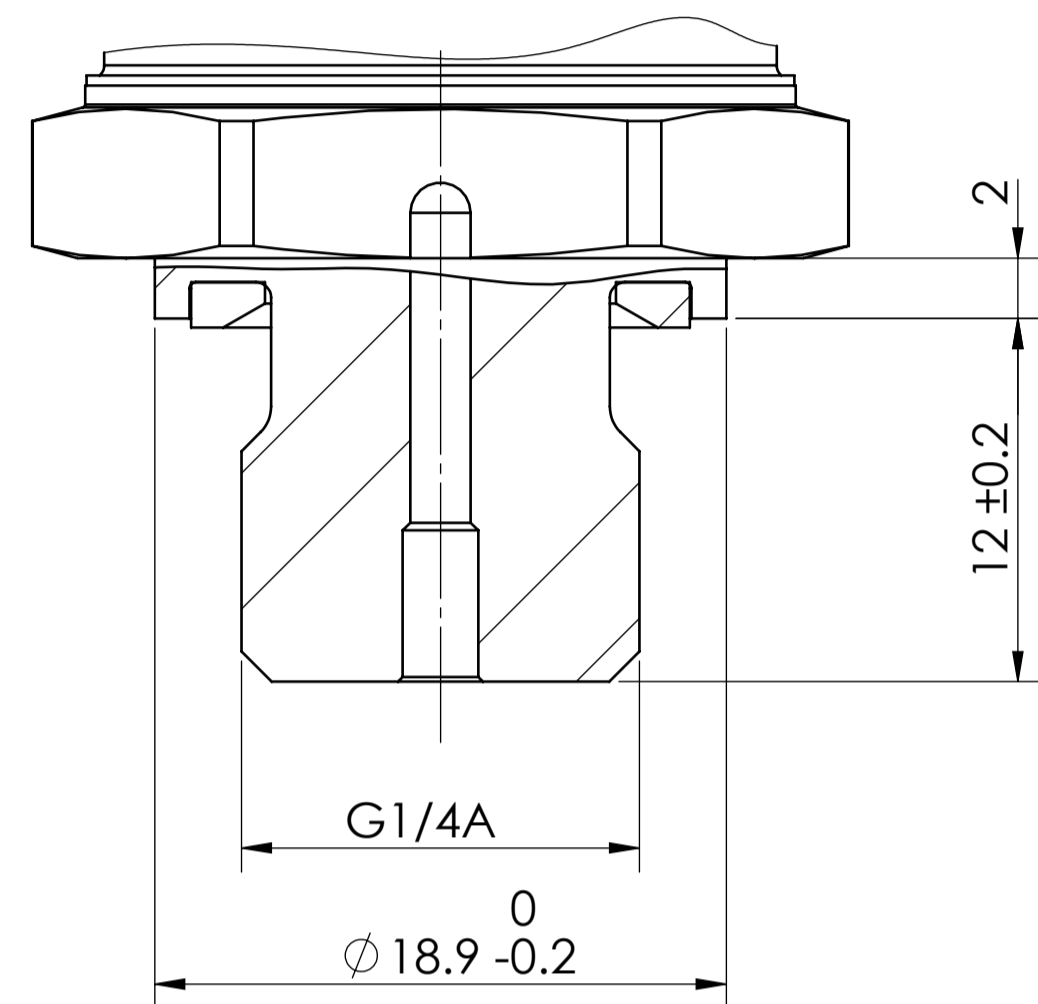
PG9 FOR CABLE Ø 4.5-7mm

MATING CONNECTOR ASSEMBLY

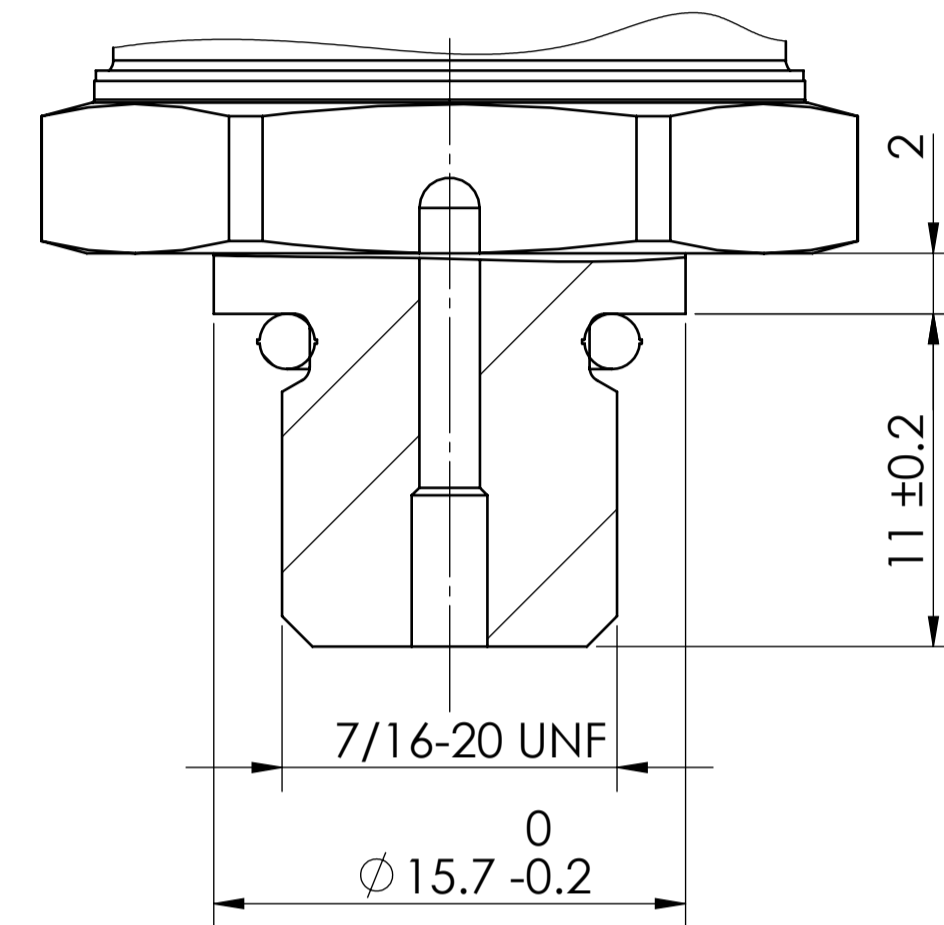


PRESSURE CONNECTION PORT OPTIONS

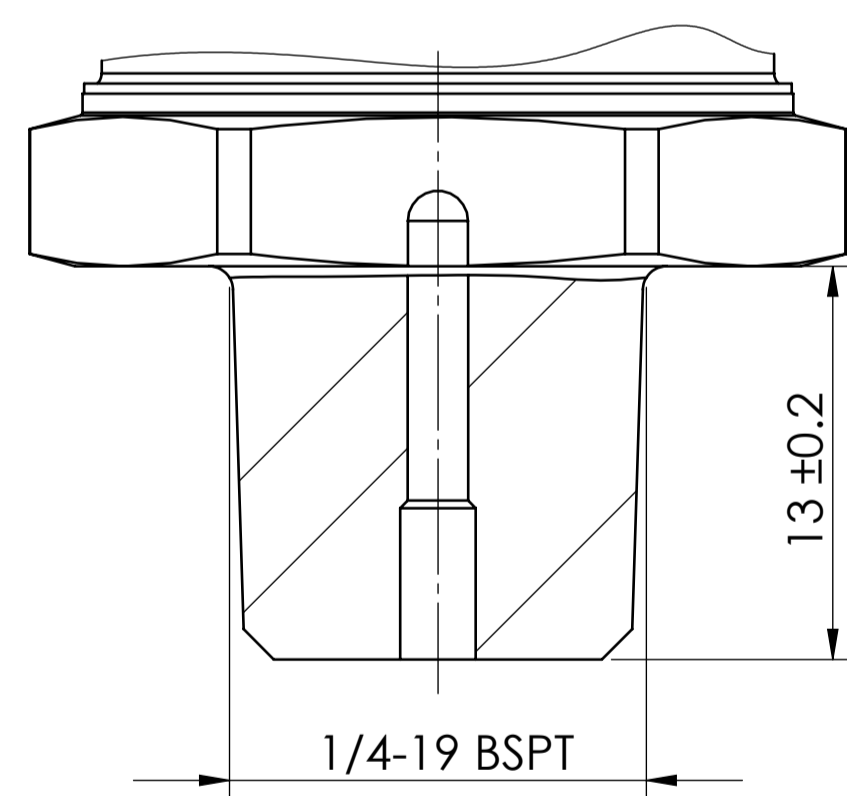
G1/4A (MALE) DIN 3852-E



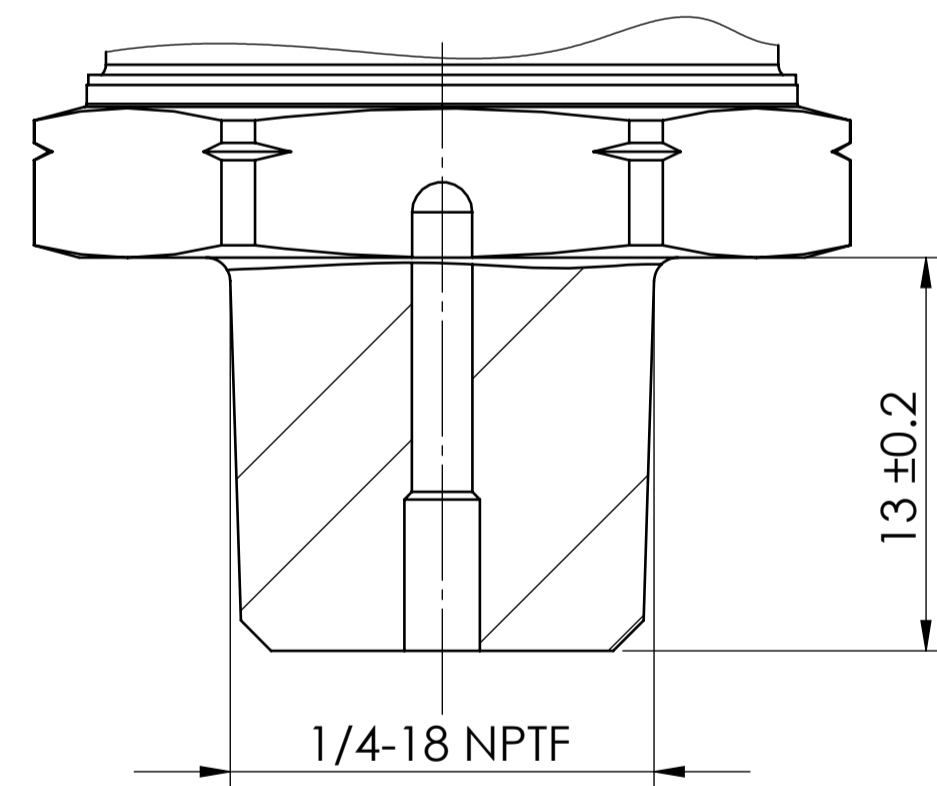
7/16-20 UNF J1926-3



1/4-19 PT (BSPT)(R1/4)



1/4-18 NPTF



SNUBBER OPTIONS (PRESSURE PORT G1/4A DIN 3852-E SHOWN)

