

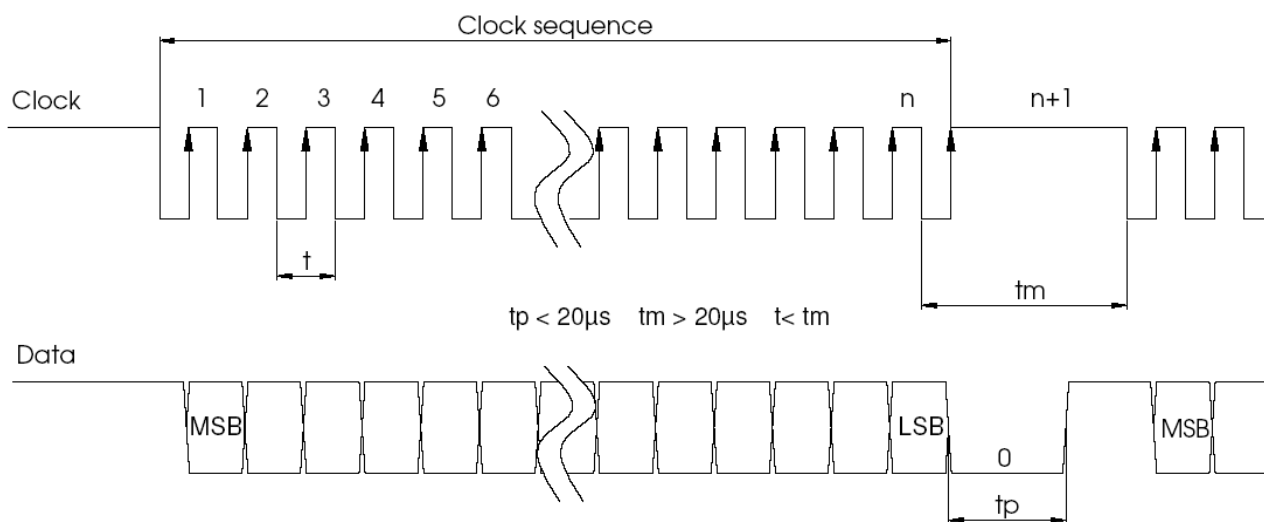
MAGNETIC ENCODERS - SSI ABSOLUTE SINGLE TURN – 13 BITS - AHM4 RANGE



ELECTRICAL CHARACTERISTICS

Single turn technology	Hall effect	Supply	4.75 – 30Vdc
Single turn resolution	13 bits	Current consumption	Typical 50mA
Accuracy	$\pm 0.0878^\circ$ (≤ 12 bits)	Power consumption	$\leq 1.5W$
Input signal clock CLK	Per optocoupler	Start up time	$< 250ms$
Output signal DATA	line - driver RS422	Interface cycle time	$> 25\mu s$
Clock frequency CLK	100kHz – 2MHz	EMC	EN 61000-6-4 EN 61000-6-2

SSI COMMUNICATION



Driver	Data according to RS422 standard ; transmission up to 10 Mbits/s
Transmission	Up to 1 200m
Safety	Signals transmission
Cable	High security of transmission by using shielded cable and twisted pairs

SSI CONNECTION

Type	+ Vcc	0 V	Clk+	Data+	RAZ	Data-	Clk-	Direction	Ground
M12 8 pinouts	2	1	3	5	7	6	4	8	Connector body

INPUTS

Count when encoder's shaft rotates clockwise, view from body (flange) side (input resistance 10kOhms)		Sent data reset (input resistance 10kOhms)	
0 (input = NC or GND)	Increasing count	0 (input = NC or GND)	Position
1 (input = +Ub or $\geq 10V$)	Decreasing count	1 (input = +Ub or $\geq 10V$)	Reset after 1 second

ORDERING REFERENCE (specific manufacture on demand. ex: flange / specific connection...)

AHM4	S100	G	0013	R	06	0	PAQ
Absolute single turn encoder	SSI version	Code : Gray	Resolution (pos./turn) 2 ¹³ (8 192)	Servo Flange	Shaft diameter : 6mm	Without mechanical option	Axial M12 connector

Datasheets provided by Sensata Technologies, Inc., its subsidiaries and/or affiliates ("Sensata") are solely intended to assist third parties ("Buyers") who are developing systems that incorporate Sensata products (also referred to herein as "components"). Buyer understands and agrees that Buyer remains responsible for using its independent analysis, valuation, and judgment in designing Buyer's systems and products. Sensata datasheets have been created using standard laboratory conditions and engineering practices. Sensata has not conducted any testing other than that specifically described in the published documentation for a particular datasheet. Sensata may make corrections, enhancements, improvements, and other changes to its datasheets or components without notice.

Buyers are authorized to use Sensata datasheets with the Sensata component(s) identified in each particular datasheet. HOWEVER, NO OTHER LICENSE, EXPRESS OR IMPLIED, BY ESTOPPEL OR OTHERWISE TO ANY OTHER SENSATA INTELLECTUAL PROPERTY RIGHT, AND NO LICENSE TO ANY THIRD PARTY TECHNOLOGY OR INTELLECTUAL PROPERTY RIGHT, IS GRANTED HEREIN. SENSATA DATASHEETS ARE PROVIDED "AS IS". SENSATA MAKES NO WARRANTIES OR REPRESENTATIONS WITH REGARD TO THE DATASHEETS OR USE OF THE DATASHEETS, EXPRESS, IMPLIED, OR STATUTORY, INCLUDING ACCURACY OR COMPLETENESS. SENSATA DISCLAIMS ANY WARRANTY OF TITLE AND ANY IMPLIED WARRANTIES OF MERCHANTABILITY, FITNESS FOR A PARTICULAR PURPOSE, QUIET ENJOYMENT, QUIET POSSESSION, AND NON-INFRINGEMENT OF ANY THIRD PARTY INTELLECTUAL PROPERTY RIGHTS WITH REGARD TO SENSATA DATASHEETS OR USE THEREOF.

All products are sold subject to Sensata's terms and conditions of sale supplied at www.sensata.com. SENSATA ASSUMES NO LIABILITY FOR APPLICATIONS ASSISTANCE OR THE DESIGN OF BUYERS' PRODUCTS. BUYER ACKNOWLEDGES AND AGREES THAT IT IS SOLELY RESPONSIBLE FOR COMPLIANCE WITH ALL LEGAL, REGULATORY, AND SAFETY-RELATED REQUIREMENTS CONCERNING ITS PRODUCTS, AND ANY USE OF SENSATA COMPONENTS IN ITS APPLICATIONS, NOTWITHSTANDING ANY APPLICATIONS-RELATED INFORMATION OR SUPPORT THAT MAY BE PROVIDED BY SENSATA.

Mailing Address: Sensata Technologies, Inc., 529 Pleasant Street, Attleboro, MA 02703, USA

CONTACT US

Regional head offices:

United States of America

Sensata Technologies

Attleboro, MA

Phone: 508-236-3800

E-mail: support@sensata.com

Netherlands

Sensata Technologies Holland B.V.

Hengelo

Phone: +31 74 357 8000

E-mail: support@sensata.com

China

Sensata Technologies China Co., Ltd.

Shanghai

Phone: +8621 2306 1500

E-mail: support@sensata.com

Copyright © 2023 Sensata Technologies, Inc.