

## SENSATA AJ11 JOYSTICK FOR MOBILE INDUSTRIAL EQUIPMENT

### Background

Mobile Elevating Work Platforms (MEWP) are commonly used to move people safely to working positions difficult to reach. This requires Operator Controls to actuate these MEWPs high in the air with high reliability and high resolution. Sensata's AJ11 joystick provides the accuracy, safety and durability required for Mobile Elevating Work Platforms.

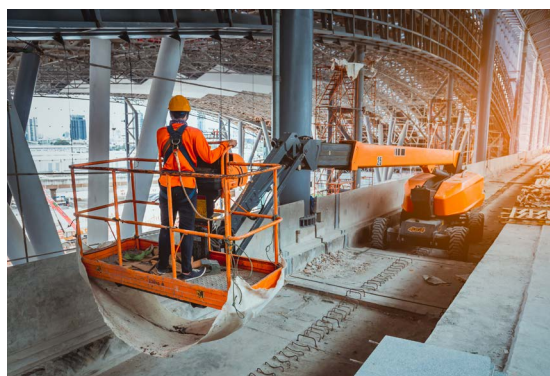
### Solution

The AJ11 is a new generation, single axis joystick developed by Sensata, which provides the reliability required in demanding environmental conditions, such as heavy-duty industrial applications. The high mechanical strength of the shaft and housing makes the joystick ideal for rigorous use in rugged, harsh environments. 3D Hall-effect sensors provide high accuracy and stable output. The joystick can be paired with Sensata's various multifunctional grips to suit the application.

*Single axis joystick, high mechanical strength, high accuracy and stable output, a reliable solution for Mobile Elevating Work Platforms*




Sensata's AJ11 can be used in all Mobile Elevating Work Platforms for driving, steering and lifting and can be integrated in different control systems. For example, the AJ11 joystick can be integrated within a platform control unit to provide control systems for slab scissor lifts or boom lifts.

Our joysticks are designed to accommodate both standard and custom designed multifunction grips. These grips may contain buttons and rockers for precise tactile feedback, designed for both heavy duty industrial and off-road, rough terrain environments.



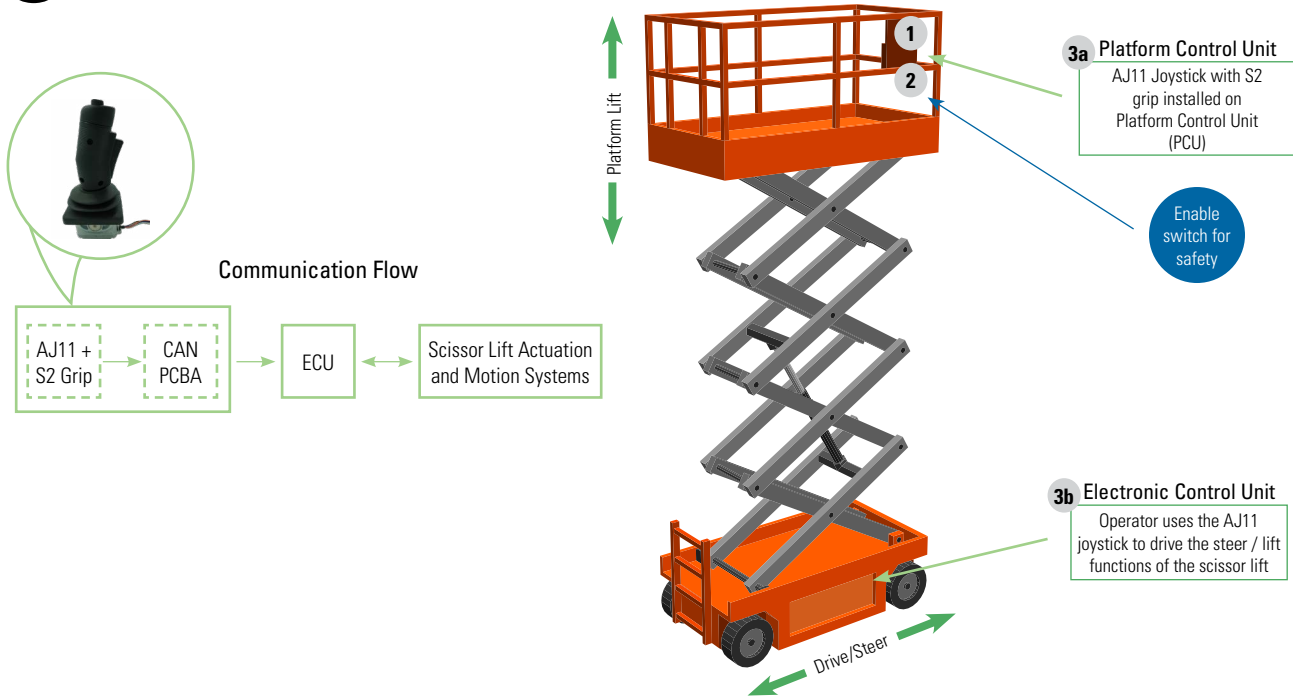


## RECOMMENDED PRODUCTS

Reference on Diagram	Product	Type	Features	Function	Brand
1	 AJ11	AJ11 Joystick	<ul style="list-style-type: none"> <li>Hall Effect Technology</li> <li>Analog Output</li> <li>IP65</li> </ul>	Operator controls and sensing	DeltaTech Controls
2	 S2	Multifunction Grip	<ul style="list-style-type: none"> <li>Switches Integrated in Grip</li> </ul>	Operator controls and tactile feedback	DeltaTech Controls
3	 a b K500	Platform Control System	<ul style="list-style-type: none"> <li>Integrated Joystick</li> <li>Pushbutton Controls</li> <li>LED Indicators</li> <li>LCD Display</li> <li>Emergency Stop Button</li> <li>CAN &amp; USB Supported</li> </ul>	System controls for platform and base of slab scissor lifts	DeltaTech Controls



## SCISSOR LIFT ACTUATION & MOTION SYSTEMS



Sensata Technologies, Inc. ("Sensata") data sheets are solely intended to assist designers ("Buyers") who are developing systems that incorporate Sensata products (also referred to herein as "components"). Buyer understands and agrees that Buyer remains responsible for using its independent analysis, evaluation and judgment in designing Buyer's systems and products. Sensata data sheets have been created using standard laboratory conditions and engineering practices. Sensata has not conducted any testing other than that specifically described in the published documentation for a particular data sheet. Sensata may make corrections, enhancements, improvements and other changes to its data sheets or components without notice.

Buyers are authorized to use Sensata data sheets with the Sensata component(s) identified in each particular data sheet. HOWEVER, NO OTHER LICENSE, EXPRESS OR IMPLIED, BY ESTOPPEL OR OTHERWISE TO ANY OTHER SENSATA INTELLECTUAL PROPERTY RIGHT, AND

NO LICENSE TO ANY THIRD PARTY TECHNOLOGY OR INTELLECTUAL PROPERTY RIGHT, IS GRANTED HEREIN. SENSATA DATA SHEETS ARE PROVIDED "AS IS". SENSATA MAKES NO WARRANTIES OR REPRESENTATIONS WITH REGARD TO THE DATA SHEETS OR USE OF THE DATA SHEETS, EXPRESS, IMPLIED OR STATUTORY, INCLUDING ACCURACY OR COMPLETENESS. SENSATA DISCLAIMS ANY WARRANTY OF TITLE AND ANY IMPLIED WARRANTIES OF MERCHANTABILITY, FITNESS FOR A PARTICULAR PURPOSE, QUIET ENJOYMENT, QUIET POSSESSION, AND NON-INFRINGEMENT OF ANY THIRD PARTY INTELLECTUAL PROPERTY RIGHTS WITH REGARD TO SENSATA DATA SHEETS OR USE THEREOF.

All products are sold subject to Sensata's terms and conditions of sale supplied at [www.sensata.com](http://www.sensata.com) SENSATA ASSUMES NO LIABILITY FOR APPLICATIONS ASSISTANCE OR THE DESIGN OF BUYERS' PRODUCTS. BUYER ACKNOWLEDGES AND AGREES THAT IT IS SOLELY RESPONSIBLE FOR COMPLIANCE WITH ALL LEGAL, REGULATORY AND SAFETY-RELATED REQUIREMENTS CONCERNING ITS PRODUCTS, AND ANY USE OF SENSATA COMPONENTS IN ITS APPLICATIONS, NOTWITHSTANDING ANY APPLICATIONS-RELATED INFORMATION OR SUPPORT THAT MAY BE PROVIDED BY SENSATA.

Mailing Address: Sensata Technologies, Inc., 529 Pleasant Street, Attleboro, MA 02703, USA.

### CONTACT US

**Americas**  
+1 (800) 350 2727  
[sensors.deltatech@sensata.com](mailto:sensors.deltatech@sensata.com)

**Europe, Middle East & Africa**  
+359 (2) 809 1826  
[ost-info.eu@sensata.com](mailto:ost-info.eu@sensata.com)

**Asia Pacific**  
[sales.isasia@list.sensata.com](mailto:sales.isasia@list.sensata.com)  
China +86 (21) 2306 1500  
Japan +81 (45) 277 7117  
Korea +82 (31) 601 2004  
India +91 (80) 67920890  
Rest of Asia +886 (2) 27602006 ext 2808