



AJ22

SINGLE AND DUAL AXIS JOYSTICK

Introduction

The AJ22 is a modular single & dual axis joystick that combines high performances and reliability in a compact and easily customizable solution. AJ22 inherit high reliability, long life cycle and strong robustness from Sensata's proven technology adopted today in demanding application such as construction and off-road vehicles. Small and light design applies for versatile material handling applications, like scissor lift, boom lift and lift truck and comply with EN1175 to satisfies lift truck mandatory regulation. Modular design allows the accommodation with standard and custom designed grips.



Main Features

- Economic single and dual axis joystick
- Hall effect, non-contact sensor technology
- Two gate sizes to adapt various mounting requirements
- Comply with EN1175
- Modular designs
- Wide working temperature range - 40°C to 85°C

Custom Modifications

- Output characteristics
- Operating force
- Gate pattern
- Over travel function
- Grips



SPECIFICATIONS

Electrical

Variant

Supply Ratings	System voltage	5V±0.1V
	Supply Current	<15mA @5V DC
	Overvoltage @5V DC	+15V, -14V
Output Type	Analog 0.5 ... 4.5V DC, center 2.5 ± 0.15V	
Other Electrical	EMI 100V/m	
EMC	EN 12895:2015+A1:2019*	
	EN ISO 13766-1:2018	
Functional Safety	ISO 13849-1:2015 PLc*	

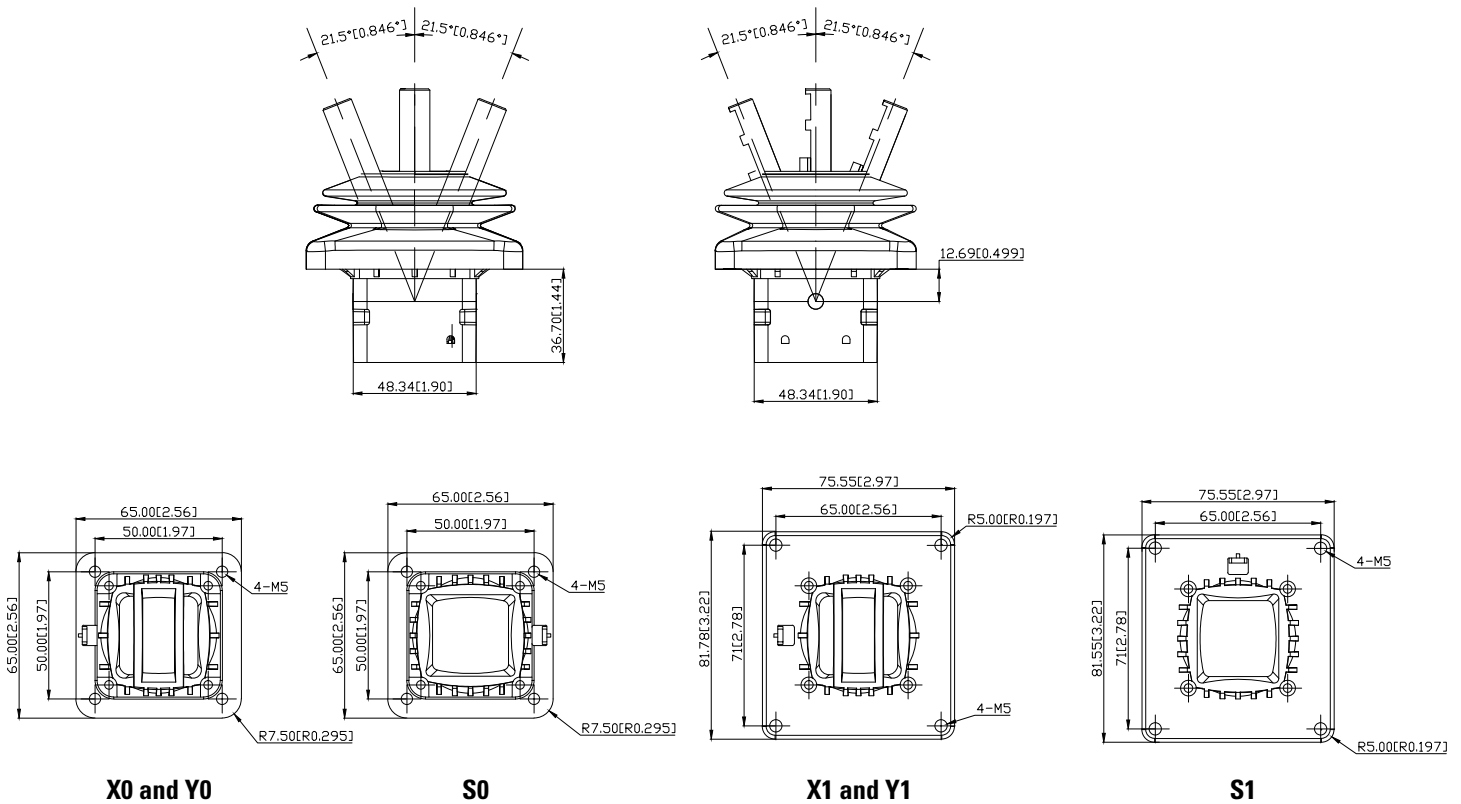
*Design complies with EN1175-2020

Mechanical

Life	> 5 million cycles
Operating temperature	-40°C to 85°C
Storage temperature	-50°C to 90°C
Horizontal maximum load	600 N @ 70mm
Vertical load maximum	900 N (250lbs)
Max Torque (Z-axis)	20 Nm
Protection Level	IP 65
Gate Option^(A)	Single axis (vertical or horizontal), Dual axis (square)
Gate Size^(A)	71x65 mm (2.80x2.56 inch) 50x50 mm (1.97x1.97 inch)
Electronics Protection	Fully potted
Lever deflection X/Y max	± 21.5°
Center null zone	± 1.5°
Housing	Plastic
Boot	EPDM (black)

^(A) Others available on request

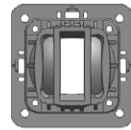
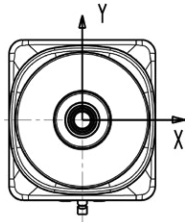
DIMENSIONS



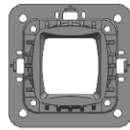


ORDERING OPTIONS

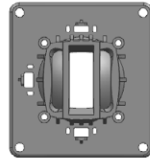
Example : AJ22-S-0-X0.96-Y0.96-V08-0-S2



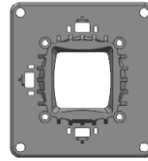
Single axis gate
50x50 mm



Dual axis gate
50x50 mm



Single axis gate
71x65 mm



Dual axis gate
71x65 mm



MFG S0



MFG S2

Model	AJ22	-	S	0	X0.96	-	Y0.96	V08	0	S2
AJ22										
Gate Type										
S: Square										
X: X-axis single										
Y: Y-axis single										
Gate Size										
0: 50x50 mm										
1: 71x65 mm										
X-Axis Operation Torque										
X0.96: 0.96 Nm										
Y-Axis Operation Torque										
Y0.96: 0.96Nm										
Output Signals										
V08: 0.5 ... 4.5V										
Travel										
0: ± 21.5°										
Grip										
S0: MFG S0										
S2: MFG S2										
...: others available on request										

Sensata Technologies, Inc. ("Sensata") data sheets are solely intended to assist designers ("Buyers") who are developing systems that incorporate Sensata products (also referred to herein as "components"). Buyer understands and agrees that Buyer remains responsible for using its independent analysis, evaluation and judgment in designing Buyer's systems and products. Sensata data sheets have been created using standard laboratory conditions and engineering practices. Sensata has not conducted any testing other than that specifically described in the published documentation for a particular data sheet. Sensata may make corrections, enhancements, improvements and other changes to its data sheets or components without notice.

Buyers are authorized to use Sensata data sheets with the Sensata component(s) identified in each particular data sheet. HOWEVER, NO OTHER LICENSE, EXPRESS OR IMPLIED, BY ESTOPPEL OR OTHERWISE TO ANY OTHER SENSATA INTELLECTUAL PROPERTY RIGHT, AND NO LICENSE TO ANY THIRD PARTY TECHNOLOGY OR INTELLECTUAL PROPERTY RIGHT, IS GRANTED HEREIN. SENSATA DATA SHEETS ARE PROVIDED "AS IS". SENSATA MAKES NO WARRANTIES OR REPRESENTATIONS WITH REGARD TO THE DATA SHEETS OR USE OF THE DATA SHEETS, EXPRESS, IMPLIED OR STATUTORY, INCLUDING ACCURACY OR COMPLETENESS. SENSATA DISCLAIMS ANY WARRANTY OF TITLE AND ANY IMPLIED WARRANTIES OF MERCHANTABILITY, FITNESS FOR A PARTICULAR PURPOSE, QUIET ENJOYMENT, QUIET POSSESSION, AND NON-INFRINGEMENT OF ANY THIRD PARTY INTELLECTUAL PROPERTY RIGHTS WITH REGARD TO SENSATA DATA SHEETS OR USE THEREOF.

All products are sold subject to Sensata's terms and conditions of sale supplied at www.sensata.com SENSATA ASSUMES NO LIABILITY FOR APPLICATIONS ASSISTANCE OR THE DESIGN OF BUYERS' PRODUCTS. BUYER ACKNOWLEDGES AND AGREES THAT IT IS SOLELY RESPONSIBLE FOR COMPLIANCE WITH ALL LEGAL, REGULATORY AND SAFETY-RELATED REQUIREMENTS CONCERNING ITS PRODUCTS, AND ANY USE OF SENSATA COMPONENTS IN ITS APPLICATIONS, NOTWITHSTANDING ANY APPLICATIONS-RELATED INFORMATION OR SUPPORT THAT MAY BE PROVIDED BY SENSATA.

Mailing Address: Sensata Technologies, Inc., 529 Pleasant Street, Attleboro, MA 02703, USA.

CONTACT US

Regional head offices:

United States of America

Sensata Technologies

Attleboro, MA

Phone: 508-236-3800

E-mail: support@sensata.com

Netherlands

Sensata Technologies Holland B.V.

Hengelo

Phone: +31 74 357 8000

E-mail: support@sensata.com

China

Sensata Technologies China Co., Ltd.

Shanghai

Phone: +8621 2306 1500

E-mail: support@sensata.com