



## | CD115

ANALOG OUTPUT DRAW-WIRE – MEASUREMENT RANGE 0 UP TO 3000 MM



### SPECIFICATIONS

<b>Measurement range</b>	0 up to 3000 mm
<b>Output signal</b>	0...10V (galvanic isolation) 4...20mA current loop 4...20mA current generator (galvanic isolation) 0...20mA current generator (galvanic isolation)
<b>Resolution</b>	Quasi infinite (depends on the operating system)
<b>Material</b>	Body and cover - aluminum (RohS) Measuring cable – Stainless steel
<b>Cable diameter</b>	0,61 mm
<b>Detection element</b>	Precision potentiometer
<b>Connection</b>	Male connector M16 – DIN 8 pin Male connector M12 – 4 pin PVC cable – 4 wires
<b>Standard linearity</b>	+/- 0,15% f.s. +/- 0,10% f.s. (optional)
<b>Protection class</b>	IP54 (option IP67)
<b>Max. Velocity</b>	10 M/S
<b>Max. Acceleration</b>	7 M/S <sup>2</sup> (before cable deformation)
<b>Weight</b>	≈ 2000 g
<b>Operating temperature</b>	-20° to +80°C
<b>Storage temperature</b>	-30° to +80°C



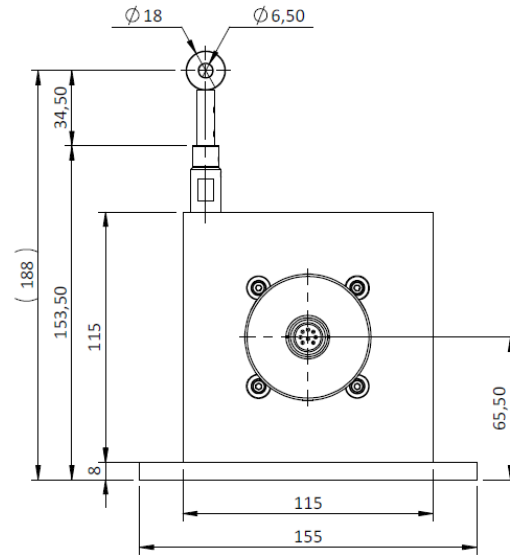
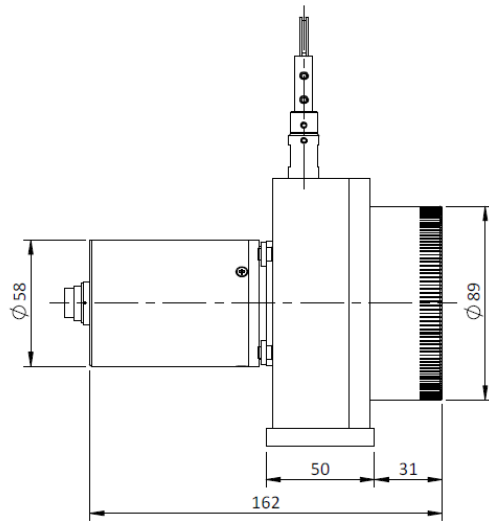
### CABLE FORCES

<b>Measurement range in mm</b>	3000
<b>Min. pull-out force</b>	≈ 13,50 N
<b>Max. pull-out force</b>	≈ 18,00 N

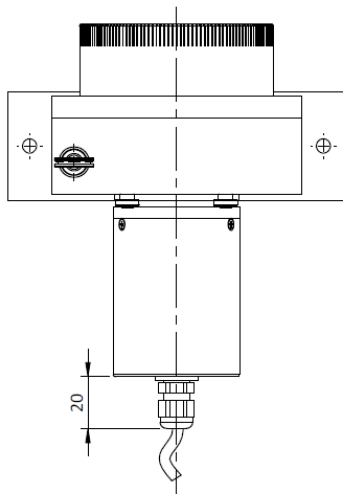


## DIMENSIONAL DRAWING

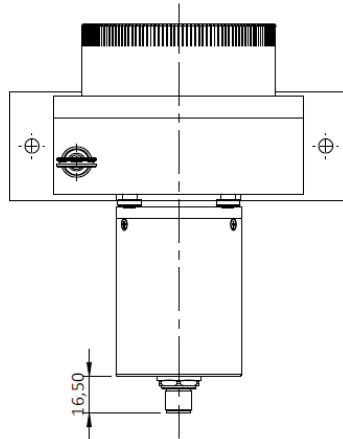
All dimensions are in mm



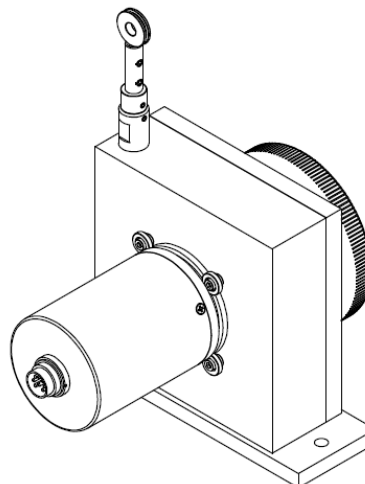
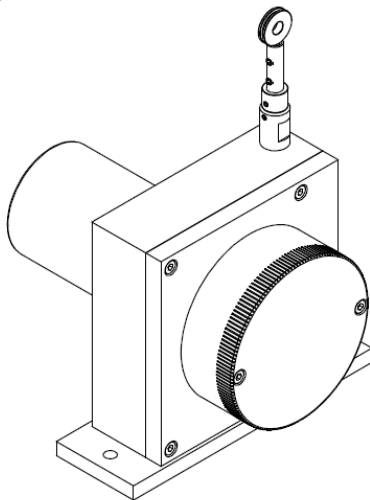
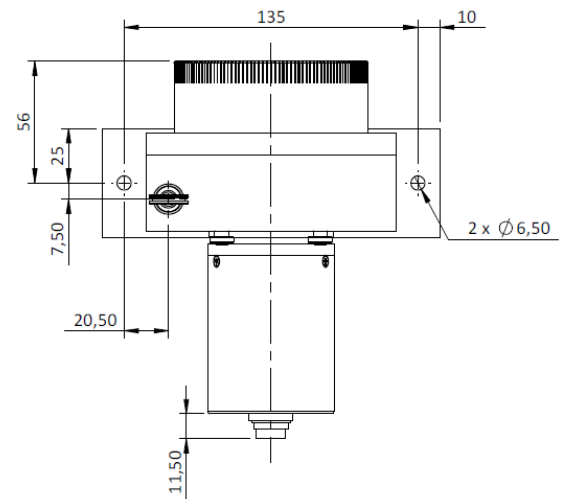
K connection  
(PVC cable - 4 wires)



L4 connection  
(connector M12 - 4 pin)



C connection  
(Connector M16 - DIN 8 pin)





	<b>CD115</b>	-	<b>3000</b>	-	<b>U010</b>	-	<b>L15</b>	-	<b>K02</b>	-	<b>OP</b>	-	<b>AC</b>
<b>Model</b>													
<b>CD115</b>													
<b>Measurement range</b>													
<b>3000</b> = 0 up to 3000 mm (Other ranges available on demand)													
<b>Output signal</b>													
<b>U010</b> = 0...10V <b>I420</b> = 4...20mA (current loop) <b>I420G</b> = 4...20mA (current generator) <b>I020G</b> = 0...20mA (current generator)													
<b>Linearity</b>													
<b>L15</b> = +/- 0.15% f.s. <b>L10</b> = +/- 0.10% f.s. (optional)													
<b>Connection</b>													
<b>C</b> = Male connector M16 - DIN 8 pin <b>L4</b> = Male connector M12 - 4 pin <b>K</b> = PVC cable - 4 wires + ex: <b>02</b> for cable 2 meters long													
<b>OP Options</b>													
<b>AC</b> = Complete anodizing <b>BR</b> = Cleaning brush for the cable <b>BT</b> = Low temperature (down to -30°C) <b>CP</b> = Fixing of the measuring cable with a clevis <b>IP67</b> = Protection class IP67 <b>M6</b> = Fixing of the measuring cable with a M6 threaded rod <b>TEV</b> = Water evacuation holes													



## AGENCY APPROVALS &amp; CERTIFICATES



Made in France

Page 3

Sensata Technologies, Inc. ("Sensata") data sheets are solely intended to assist designers ("Buyers") who are developing systems that incorporate Sensata products (also referred to herein as "components"). Buyer understands and agrees that Buyer remains responsible for using its independent analysis, evaluation and judgment in designing Buyer's systems and products. Sensata data sheets have been created using standard laboratory conditions and engineering practices. Sensata has not conducted any testing other than that specifically described in the published documentation for a particular data sheet. Sensata may make corrections, enhancements, improvements and other changes to its data sheets or components without notice.

Buyers are authorized to use Sensata data sheets with the Sensata component(s) identified in each particular data sheet. HOWEVER, NO OTHER LICENSE, EXPRESS OR IMPLIED, BY ESTOPPEL OR OTHERWISE TO ANY OTHER SENSATA INTELLECTUAL PROPERTY RIGHT, AND NO LICENSE TO ANY THIRD PARTY TECHNOLOGY OR INTELLECTUAL PROPERTY RIGHT, IS GRANTED HEREIN. SENSATA DATA SHEETS ARE PROVIDED "AS IS". SENSATA MAKES NO WARRANTIES OR REPRESENTATIONS WITH REGARD TO THE DATA SHEETS OR USE OF THE DATA SHEETS, EXPRESS, IMPLIED OR STATUTORY, INCLUDING ACCURACY OR COMPLETENESS. SENSATA DISCLAIMS ANY WARRANTY OF TITLE AND ANY IMPLIED WARRANTIES OF MERCHANTABILITY, FITNESS FOR A PARTICULAR PURPOSE, QUIET ENJOYMENT, QUIET POSSESSION, AND NON-INFRINGEMENT OF ANY THIRD PARTY INTELLECTUAL PROPERTY RIGHTS WITH REGARD TO SENSATA DATA SHEETS OR USE THEREOF.

All products are sold subject to Sensata's terms and conditions of sale supplied at [www.sensata.com](http://www.sensata.com) SENSATA ASSUMES NO LIABILITY FOR APPLICATIONS ASSISTANCE OR THE DESIGN OF BUYERS' PRODUCTS. BUYER ACKNOWLEDGES AND AGREES THAT IT IS SOLELY RESPONSIBLE FOR COMPLIANCE WITH ALL LEGAL, REGULATORY AND SAFETY-RELATED REQUIREMENTS CONCERNING ITS PRODUCTS, AND ANY USE OF SENSATA COMPONENTS IN ITS APPLICATIONS, NOTWITHSTANDING ANY APPLICATIONS-RELATED INFORMATION OR SUPPORT THAT MAY BE PROVIDED BY SENSATA.

Mailing Address: Sensata Technologies, Inc., 529 Pleasant Street, Attleboro, MA 02703, USA.

## CONTACT US

## Americas

+1 (800) 350 2727  
[sales.beisensors@sensata.com](mailto:sales.beisensors@sensata.com)  
**Europe, Middle East & Africa**  
 +33 (3) 88 20 8080  
[position-info.eu@sensata.com](mailto:position-info.eu@sensata.com)

## Asia Pacific

[sales.isasia@list.sensata.com](mailto:sales.isasia@list.sensata.com)  
 China +86 (21) 2306 1500  
 Japan +81 (45) 277 7117  
 Korea +82 (31) 601 2004  
 India +91 (80) 67920890  
 Rest of Asia +886 (2) 27602006  
 ext 2808