



| CD150

ANALOG OUTPUT DRAW-WIRE – MEASUREMENT RANGE 0 UP TO 6000 MM



SPECIFICATIONS

Measurement range	0 up to 6000 mm
Output signal	0...10V (galvanic isolation) 4...20mA current loop 4...20mA current generator (galvanic isolation) 0...20mA current generator (galvanic isolation)
Resolution	Quasi infinite (depends on the operating system)
Material	Body and cover - aluminum (RohS) Measuring cable - Stainless steel
Cable diameter	0,60 mm
Detection element	Precision potentiometer
Connection	Male connector M16 - DIN 8 pin Male connector M12 - 4 pin PVC cable - 4 wires
Standard linearity	+/- 0,15% f.s. +/- 0,10% f.s. (optional)
Protection class	IP54 (option IP67)
Max. Velocity	10 m/s
Max. Acceleration	5 m/s ² (before cable deformation)
Weight	≈ 3000 g
Operating temperature	-20° to +80°C
Storage temperature	-30° to +80°C



CABLE FORCES

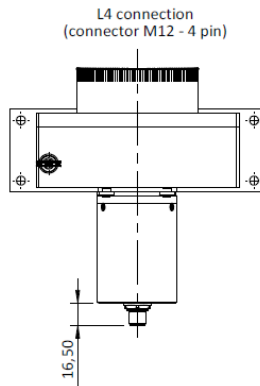
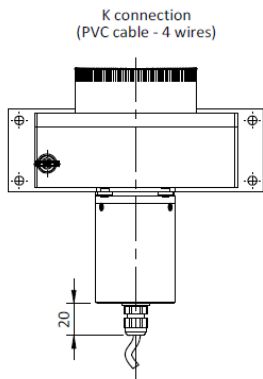
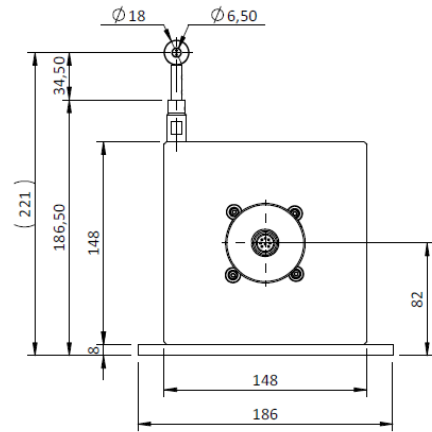
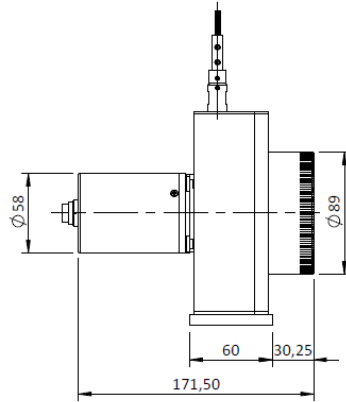
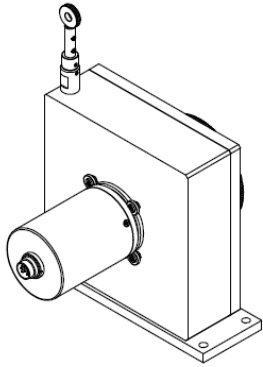
Measurement range in mm	4000	6000
Min. pull-out force	≈ 11,00 N	≈ 10,00 N
Max. pull-out force	≈ 13,50 N	≈ 13,50 N



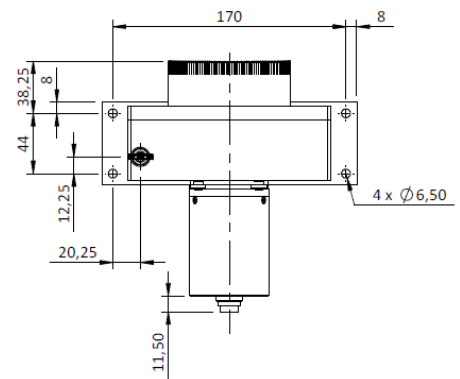
DIMENSIONS

All dimensions are in mm

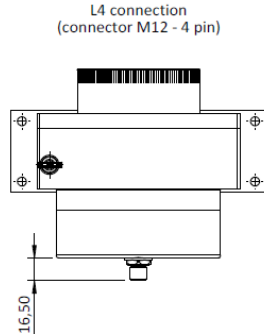
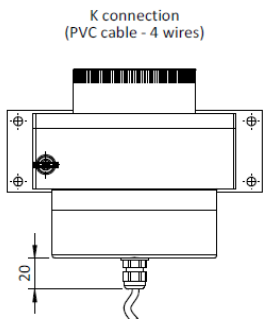
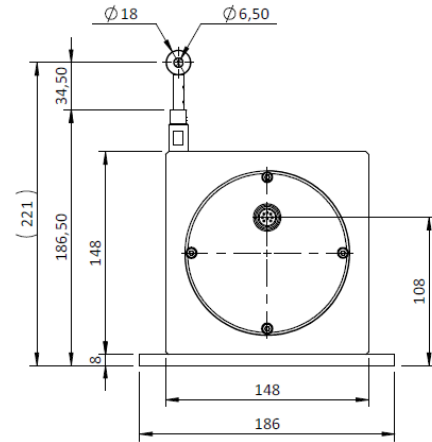
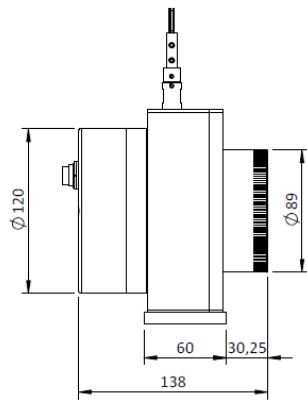
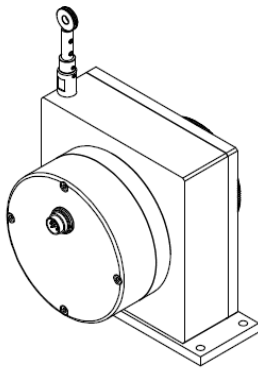
Measurement range up to 4000 mm



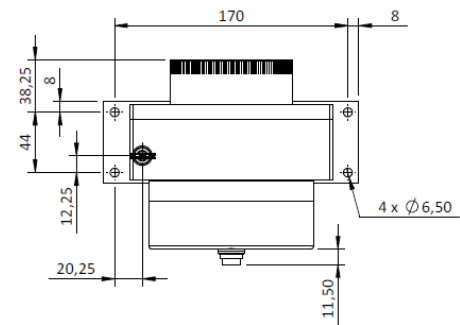
C connection
(Connector M16 - DIN 8 pin)



Measuring range greater than 4000 mm up to 6000 mm



C connection
(Connector M16 - DIN 8 pin)





ORDERING OPTIONS

Example: CD150-4000-U010-L15-K02-OP-AC-M4

	CD150	-	4000	-	U010	-	L15	-	K02	-	OP	-	M4
Model													
CD150													
Measurement range													
4000 = 0 up to 4000 mm 6000 = 0 up to 6000 mm (Other ranges available on demand)													
Output signal													
U010 = 0...10V I420 = 4...20mA (current loop) I420G = 4...20mA (current generator) I020G = 0...20mA (current generator)													
Linearity													
L15 = +/- 0.15% f.s. L10 = +/- 0.10% f.s. (optional)													
Connection													
C = Male connector M16 - DIN 8 pin L4 = Male connector M12 - 4 pin K = PVC cable - 4 wires + ex: 02 for cable 2 meters long													
OP Options													
AC = Complete anodizing BR = Cleaning brush for the cable BT = Low temperature (down to -30°C) CP = Fixing of the measuring cable with a clevis IP67 = Protection class IP67 M4 = Fixing of the measuring cable with a M4 threaded rod TEV = Water evacuation holes													



AGENCY APPROVALS & CERTIFICATIONS



Made In France

Page 3

Sensata Technologies, Inc. ("Sensata") data sheets are solely intended to assist designers ("Buyers") who are developing systems that incorporate Sensata products (also referred to herein as "components"). Buyer understands and agrees that Buyer remains responsible for using its independent analysis, evaluation and judgment in designing Buyer's systems and products. Sensata data sheets have been created using standard laboratory conditions and engineering practices. Sensata has not conducted any testing other than that specifically described in the published documentation for a particular data sheet. Sensata may make corrections, enhancements, improvements and other changes to its data sheets or components without notice.

Buyers are authorized to use Sensata data sheets with the Sensata component(s) identified in each particular data sheet. HOWEVER, NO OTHER LICENSE, EXPRESS OR IMPLIED, BY ESTOPPEL OR OTHERWISE TO ANY OTHER SENSATA INTELLECTUAL PROPERTY RIGHT, AND NO LICENSE TO ANY THIRD PARTY TECHNOLOGY OR INTELLECTUAL PROPERTY RIGHT, IS GRANTED HEREIN. SENSATA DATA SHEETS ARE PROVIDED "AS IS". SENSATA MAKES NO WARRANTIES OR REPRESENTATIONS WITH REGARD TO THE DATA SHEETS OR USE OF THE DATA SHEETS, EXPRESS, IMPLIED OR STATUTORY, INCLUDING ACCURACY OR COMPLETENESS. SENSATA DISCLAIMS ANY WARRANTY OF TITLE AND ANY IMPLIED WARRANTIES OF MERCHANTABILITY, FITNESS FOR A PARTICULAR PURPOSE, QUIET ENJOYMENT, QUIET POSSESSION, AND NON-INFRINGEMENT OF ANY THIRD PARTY INTELLECTUAL PROPERTY RIGHTS WITH REGARD TO SENSATA DATA SHEETS OR USE THEREOF.

All products are sold subject to Sensata's terms and conditions of sale supplied at www.sensata.com SENSATA ASSUMES NO LIABILITY FOR APPLICATIONS ASSISTANCE OR THE DESIGN OF BUYERS' PRODUCTS. BUYER ACKNOWLEDGES AND AGREES THAT IT IS SOLELY RESPONSIBLE FOR COMPLIANCE WITH ALL LEGAL, REGULATORY AND SAFETY-RELATED REQUIREMENTS CONCERNING ITS PRODUCTS, AND ANY USE OF SENSATA COMPONENTS IN ITS APPLICATIONS, NOTWITHSTANDING ANY APPLICATIONS-RELATED INFORMATION OR SUPPORT THAT MAY BE PROVIDED BY SENSATA.

Mailing Address: Sensata Technologies, Inc., 529 Pleasant Street, Attleboro, MA 02703, USA.

CONTACT US

Americas

+1 (800) 350 2727
sales.beisensors@sensata.com
Europe, Middle East & Africa
 +33 (3) 88 20 8080
position-info.eu@sensata.com

Asia Pacific

sales.isasia@list.sensata.com
 China +86 (21) 2306 1500
 Japan +81 (45) 277 7117
 Korea +82 (31) 601 2004
 India +91 (80) 67920890
 Rest of Asia +886 (2) 27602006 ext 2808