

4

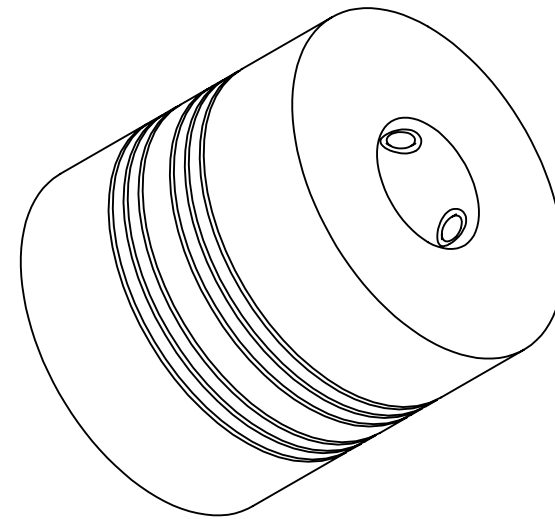
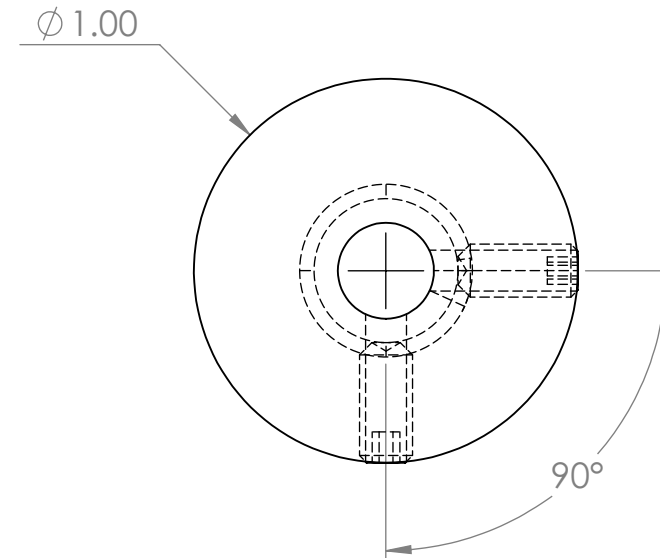
3

2

1

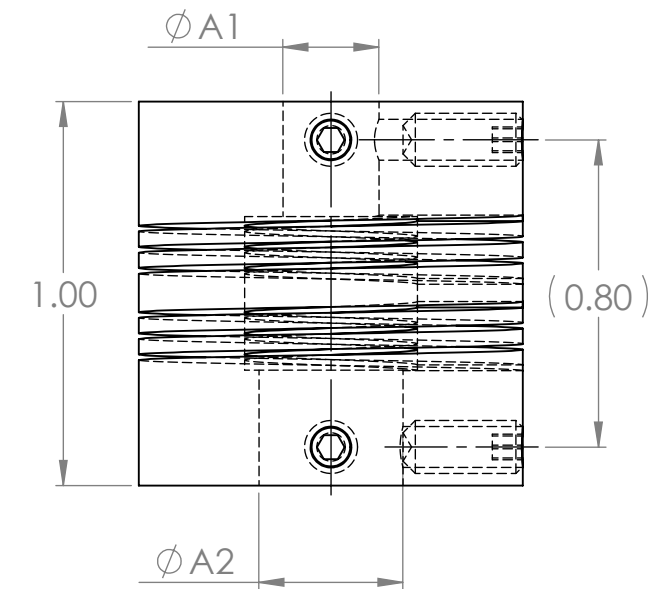
ZONE	REV.	REVISION DESCRIPTION	ECN NO.	DATE

PART NUMBER	Ø A	Ø B
39074-8-8	.250	.250
39074-12-8	.375	.250
39074-12-12	.375	.375
39074-10MM-12	10MM	.375




NOTES (UNLESS OTHERWISE INDICATED)

1. BORE DIA. TOLERANCE +.002/-0.000
2. AXIAL MOTION ±.020
3. ANGULAR MISALIGNMENT ≤ 5°
4. PARALLEL MISALIGNMENT ≤ .01
5. 10,000 RPM MAX



PART NUMBER	TORSIONAL FLEXIBILITY	TORQUES (LB-INCH)		
		NON-REVERSING	SHOCK OR REVERSING	MOMENTARY
39074-8-8	.165 MIN/IN-OZ	19	9.3	37
39074-12-8	.315 MIN/IN-OZ	15	7.5	30
39074-12-12				
39074-10MM-12				

UNCONTROLLED COPY		 BEI SENSORS 1461 LAWRENCE DRIVE THOUSAND OAKS, CA 93120	
FIRST ISSUE DATE: 11/27/18	DRAWN: DRC APPROVED: DATE: XX/XX/XX	SENSATA TECHNOLOGIES PROPRIETARY AND CONFIDENTIAL. NEITHER THIS PRINT NOR THE INFORMATION CONTAINED HEREON IS TO BE USED AGAINST THE INTERESTS OF SENSATA TECHNOLOGIES OR AGAINST THE INTERESTS OF ANY OF ITS AFFILIATED COMPANIES OR WHOLLY OWNED SUBSIDIARIES. INTERPRET DIMENSIONING AND TOLERANCING PER ASME Y14.5-2009. UNLESS OTHERWISE SPECIFIED DIMENSIONS ARE IN INCHES [MILLIMETERS] AND ARE INTENDED AS NOMINAL SEE PRODUCT SPECIFICATIONS FOR MORE DETAILS.	
ECN:			
DATE:	DO NOT SCALE DRAWING	THIRD ANGLE PROJECTION	TITLE FLEXIBLE SHAFT COUPLING
MATERIAL:	SCALE 2:1	DWG NO. 09904-001	REV. A
	PROJECT:	SOLIDWORKS	SHEET 1 OF 1

4

3

2

1

DEVICE:

PROJECT: