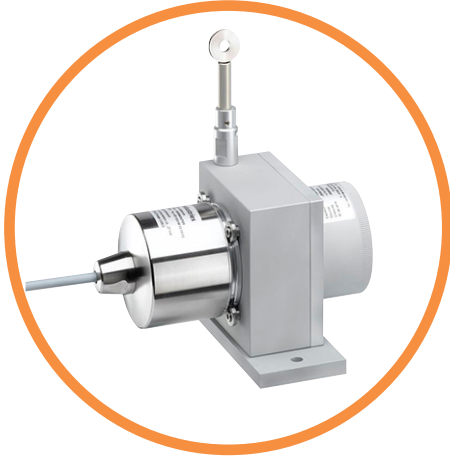


CD080

POTENTIOMETRIC OUTPUT DRAW-WIRE – MEASUREMENT RANGE 0 UP TO 2000 MM

The CD080 Potentiometric is a Draw Wire sensor that utilizes a precision potentiometer output to indicate linear motion of the draw wire. Utilizing a spring loaded rotary cable reel with a stainless steel measuring cable and an aluminum enclosure, this sensor is well suited to the industrial environments that it is intended for. Dimensions are approximately 160 X 120X 150 mm and weight is ~ 1500 g.



Features

- Range up to 2000 mm
- Standard linearity of 0.15%
- Connector and cable output options available
- IP54 rated with IP67 option
- Built-in cable cleaning brush option available
- Well suited for dusty, hot or wet environments

SPECIFICATIONS

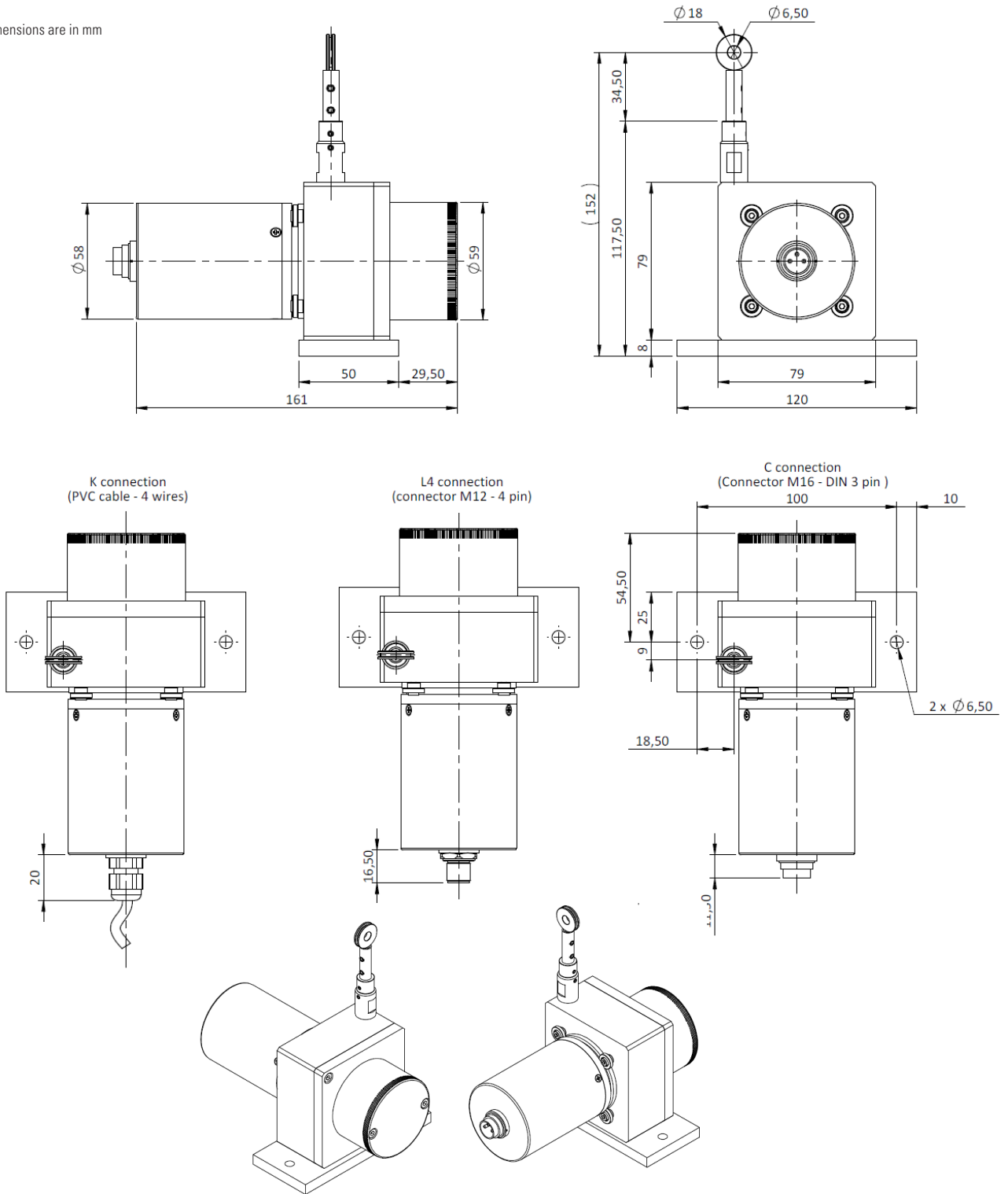
Measurement range	0 up to 2000 mm
Output signal	1k Ω (other values on demand)
Resolution	Quasi infinite (depends on the operating system)
Material	Body and cover - aluminum (RohS) Measuring cable - Stainless steel
Cable diameter	0,60 mm
Detection element	Precision potentiometer
Connection	Male connector M16 - DIN 3 pin Male connector M12 - 4 pin PVC cable - 4 wires
Standard linearity	+/- 0,15% f.s. +/- 0,10% f.s. (optional)
Protection class	IP54 (option IP67)
Max. Velocity	10 m/s
Max. Acceleration	8 m/s ² (before cable deformation)
Weight	≈ 1500 g
Operating temperature	-20° to +80°C
Storage temperature	-30° to +80°C

CABLE FORCES

Measurement range in mm	2000
Min. pull-out force	≈ 8,00 N
Max. pull-out force	≈ 11,00 N

DIMENSIONS

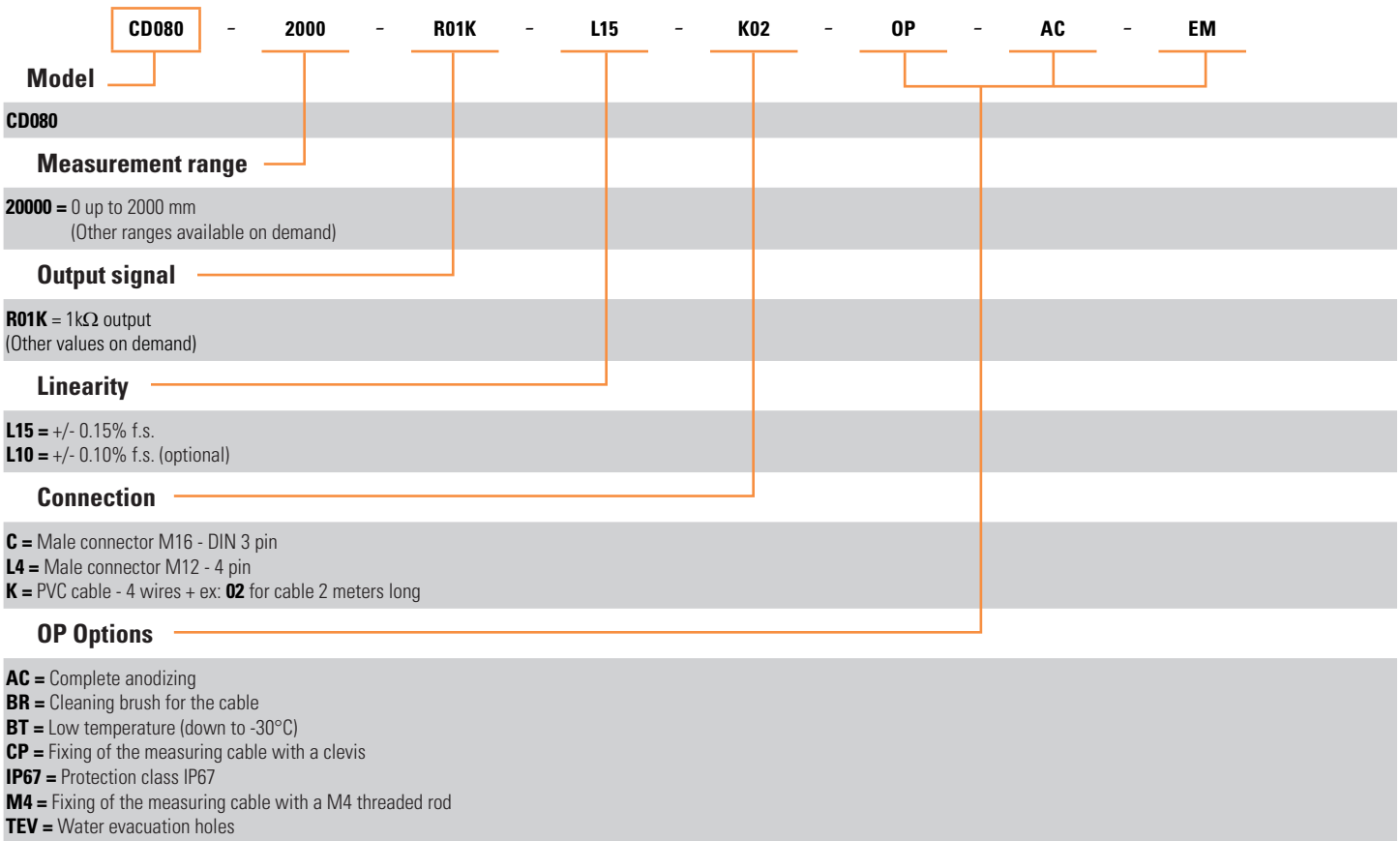
All dimensions are in mm





ORDERING OPTIONS

Example: CD80-2000-R01K-L15-K02-OP-AC-EM



AGENCY APPROVALS & CERTIFICATES



Made In France

Page 3

Sensata Technologies, Inc. ("Sensata") data sheets are solely intended to assist designers ("Buyers") who are developing systems that incorporate Sensata products (also referred to herein as "components"). Buyer understands and agrees that Buyer remains responsible for using its independent analysis, evaluation and judgment in designing Buyer's systems and products. Sensata data sheets have been created using standard laboratory conditions and engineering practices. Sensata has not conducted any testing other than that specifically described in the published documentation for a particular data sheet. Sensata may make corrections, enhancements, improvements and other changes to its data sheets or components without notice.

Buyers are authorized to use Sensata data sheets with the Sensata component(s) identified in each particular data sheet. HOWEVER, NO OTHER LICENSE, EXPRESS OR IMPLIED, BY ESTOPPEL OR OTHERWISE TO ANY OTHER SENSATA INTELLECTUAL PROPERTY RIGHT, AND NO LICENSE TO ANY THIRD PARTY TECHNOLOGY OR INTELLECTUAL PROPERTY RIGHT, IS GRANTED HEREIN. SENSATA DATA SHEETS ARE PROVIDED "AS IS". SENSATA MAKES NO WARRANTIES OR REPRESENTATIONS WITH REGARD TO THE DATA SHEETS OR USE OF THE DATA SHEETS, EXPRESS, IMPLIED OR STATUTORY, INCLUDING ACCURACY OR COMPLETENESS. SENSATA DISCLAIMS ANY WARRANTY OF TITLE AND ANY IMPLIED WARRANTIES OF MERCHANTABILITY, FITNESS FOR A PARTICULAR PURPOSE, QUIET ENJOYMENT, QUIET POSSESSION, AND NON-INFRINGEMENT OF ANY THIRD PARTY INTELLECTUAL PROPERTY RIGHTS WITH REGARD TO SENSATA DATA SHEETS OR USE THEREOF.

All products are sold subject to Sensata's terms and conditions of sale supplied at www.sensata.com SENSATA ASSUMES NO LIABILITY FOR APPLICATIONS ASSISTANCE OR THE DESIGN OF BUYERS' PRODUCTS. BUYER ACKNOWLEDGES AND AGREES THAT IT IS SOLELY RESPONSIBLE FOR COMPLIANCE WITH ALL LEGAL, REGULATORY AND SAFETY-RELATED REQUIREMENTS CONCERNING ITS PRODUCTS, AND ANY USE OF SENSATA COMPONENTS IN ITS APPLICATIONS, NOTWITHSTANDING ANY APPLICATIONS-RELATED INFORMATION OR SUPPORT THAT MAY BE PROVIDED BY SENSATA.

Mailing Address: Sensata Technologies, Inc., 529 Pleasant Street, Attleboro, MA 02703, USA.

CONTACT US

Americas

+1 (800) 350 2727
sales.beisensors@sensata.com
Europe, Middle East & Africa
+33 (3) 88 20 8080
position-info.eu@sensata.com

Asia Pacific

sales.isasia@list.sensata.com
China +86 (21) 2306 1500
Japan +81 (45) 277 7117
Korea +82 (31) 601 2004
India +91 (80) 67920890
Rest of Asia +886 (2) 27602006 ext 2808