

HIGH ACCURACY TEMPERATURE SENSORS FOR EXHAUST GAS RECIRCULATION SYSTEMS

Background

In today's world it is of vital importance to regulate the pollutants released by automobiles and other powered vehicles, and it is also important to regulate emissions from industry, power plants, small equipment and diesel generators. Some of these systems use a technique called Engine Gas Recirculation (EGR) which allows them to have very low emission levels. This technique takes a portion of the exhaust gas, cools it and then recycles it into the combustion process.

Although EGR is used mainly in automotive systems its range of application is quite broad as it can be also found in Generator Sets, Oil and Gas Equipment, Chemical, Marine, Industrial Engines, and Boiler exhaust.

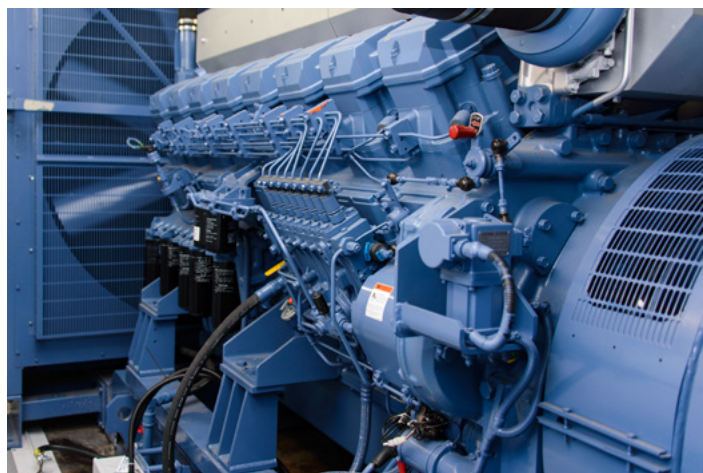
5024 EGR sensors provide accurate and reliable temperature monitoring and early failure detection

Solution

The primary reason to implement EGR systems into automobiles is to meet ever stricter emission standards. EGR accomplishes this by cooling and then recirculating exhaust gas back into the combustion chamber (cylinders). The 5024 EGR temperature sensor signals the CPU in order to control coolant flow and exhaust gas flow that optimize the process. It also helps to protect the components of the system from overheating.




The use of a 5024 EGR sensor provides accurate and reliable temperature monitoring and allows the control system to:

- Detect for EGR cooler failure
- Close EGR valve to shut down cooler
- Monitor efficiency of cooler



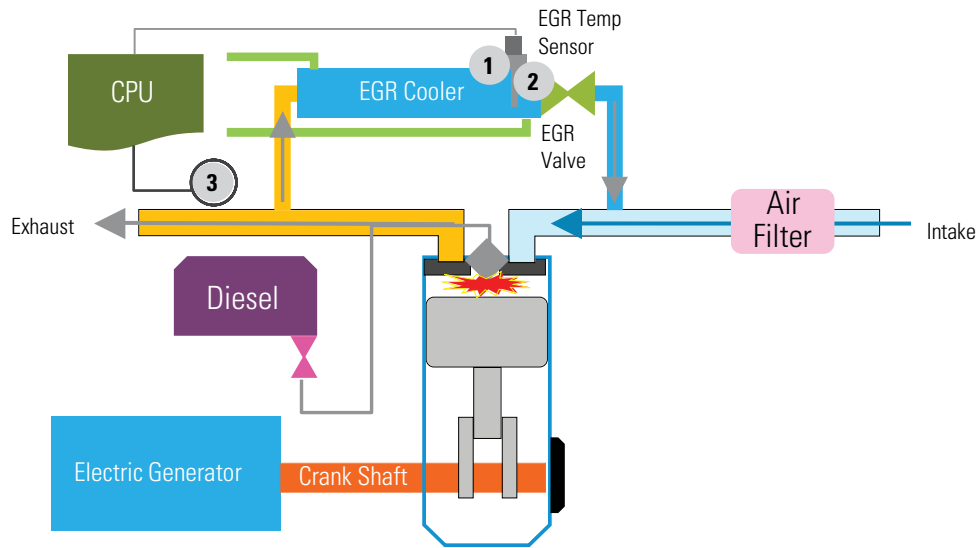


RECOMMENDED PRODUCTS

Reference on Diagram	Product	Function	Features	Brand
Temperature				
1	5024 EGR SERIES 	Low/High Pressure EGR Temperature Monitoring	<ul style="list-style-type: none"> • 10KΩ NTC thermistor sense element • Peak temperature to 300°C • High accuracy over complete range • Fast response time • Stainless steel construction 	Sensata Technologies
2	DARTS 	Low/High Pressure EGR Temperature Monitoring	<ul style="list-style-type: none"> • 200Ω and 500Ω RTD sense element • Peak temperature to 850°C • High accuracy over complete range • Fast response time • Stainless/inconel construction 	Sensata Technologies
Pressure Sensors & Switches				
3	60CP/70CP 81CP 100CP 35CP 	Monitoring of Exhaust Back Pressure	<ul style="list-style-type: none"> • Operating pressure range: 0-15 to 0-750 PSI (0-1 to 0-50 Bar) • Supply voltage: 5VDC ratiometric or 8-30VDC voltage regulated • Output: 0-4.5 VDC or 4-20 mA 	Sensata Technologies



EXHAUST GAS RECIRCULATION SYSTEM



Sensata Technologies, Inc. ("Sensata") data sheets are solely intended to assist designers ("Buyers") who are developing systems that incorporate Sensata products (also referred to herein as "components"). Buyer understands and agrees that Buyer remains responsible for using its independent analysis, evaluation and judgment in designing Buyer's systems and products. Sensata data sheets have been created using standard laboratory conditions and engineering practices. Sensata has not conducted any testing other than that specifically described in the published documentation for a particular data sheet. Sensata may make corrections, enhancements, improvements and other changes to its data sheets or components without notice. Buyers are authorized to use Sensata data sheets with the Sensata component(s) identified in each particular data sheet. HOWEVER, NO OTHER LICENSE, EXPRESS OR IMPLIED, BY ESTOPPEL OR OTHERWISE TO ANY OTHER SENSATA INTELLECTUAL PROPERTY RIGHT, AND

NO LICENSE TO ANY THIRD PARTY TECHNOLOGY OR INTELLECTUAL PROPERTY RIGHT, IS GRANTED HEREIN. SENSATA DATA SHEETS ARE PROVIDED "AS IS". SENSATA MAKES NO WARRANTIES OR REPRESENTATIONS WITH REGARD TO THE DATA SHEETS OR USE OF THE DATA SHEETS, EXPRESS, IMPLIED OR STATUTORY, INCLUDING ACCURACY OR COMPLETENESS. SENSATA DISCLAIMS ANY WARRANTY OF TITLE AND ANY IMPLIED WARRANTIES OF MERCHANTABILITY, FITNESS FOR A PARTICULAR PURPOSE, QUIET ENJOYMENT, QUIET POSSESSION, AND NON-INFRINGEMENT OF ANY THIRD PARTY INTELLECTUAL PROPERTY RIGHTS WITH REGARD TO SENSATA DATA SHEETS OR USE THEREOF.

All products are sold subject to Sensata's terms and conditions of sale supplied at www.sensata.com SENSATA ASSUMES NO LIABILITY FOR APPLICATIONS ASSISTANCE OR THE DESIGN OF BUYERS' PRODUCTS. BUYER ACKNOWLEDGES AND AGREES THAT IT IS SOLELY RESPONSIBLE FOR COMPLIANCE WITH ALL LEGAL, REGULATORY AND SAFETY-RELATED REQUIREMENTS CONCERNING ITS PRODUCTS, AND ANY USE OF SENSATA COMPONENTS IN ITS APPLICATIONS, NOTWITHSTANDING ANY APPLICATIONS-RELATED INFORMATION OR SUPPORT THAT MAY BE PROVIDED BY SENSATA.

Mailing Address: Sensata Technologies, Inc., 529 Pleasant Street, Attleboro, MA 02703, USA.

CONTACT US

Americas

Pressure Sensors and Switches
+1 (800) 350 2727
sensors@sensata.com
switches@sensata.com
Temperature Sensors
+1 (888) 438 2214
sensors@sensata.com

Europe, Middle East & Africa

Pressure Sensors and Switches
+359 (2) 809 1826
pressure-info.eu@sensata.com
Temperature Sensors
+31 (74) 357 8156 (Klixon+Airpax)
temperature-info.eu@sensata.com

Asia Pacific

sales.isasia@list.sensata.com
China +86 (21) 2306 1500
Japan +81 (45) 277 7117
Korea +82 (31) 601 2004
India +91 (80) 67920890
Rest of Asia +886 (2) 27602006 ext 2808