

EXTERNAL RECEIVER

COMMERCIAL VEHICLE TPMS COMPONENTS

The external receiver is an RF receiver that is hard wired to the TPMS ECU. If one receiver integrated in the ECU is not sufficient, these additional receivers can be used.

Typical drivers for the use of external receiver(s) are large distances between sensors or support of advanced features like auto location in the complex wheel configurations of commercial vehicles, like dual wheels and multiple axles.



Features

TIRE PRESSURE MONITORING:

- GSR compliant
- Tire pressure by wheel location
- Temperature compensated pressure sensing
- High pressure / low pressure warning
- High temperature warning
- Spare tire monitoring

AUTO-LOCATION:

- Automatic location of all tire sensors to correct wheel positions, eliminating need for manual programming of tire sensors.

TIRE FILL ASSIST:

- Allows vehicle operator to fill tire to exact, temperature compensated, pressure rating.
- Removes the need for a separate pressure gauge.

TIRE LOCK WARNING:

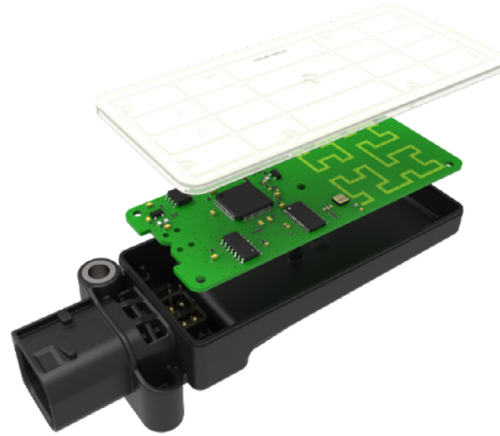
- Warning when a tire does not rotate
- Can be combined with a lowered position of a tag / lift axle

TIRE BURST WARNING:

- Detects fast pressure drop caused by tire blow out
- Sends a warning signal, including specific tire location, within 500ms of the event
- Allows for vehicle reaction control upon a tire burst event

SPECIFICATIONS

Packaging	IP rating	IP6k9k
	Fixing	Bracket mounted via single M5 fixing
	Location	Outside of Chassis rail preferred
Functionality	RF Data reception RF Data validation RF Gateway to ECU via CAN Auto configure of private network Reduce Stationary Monitoring null spots TPM Auto-location wheel location discrimination Tire Burst detect priority forwarding	



Sensata Technologies, Inc. ("Sensata") data sheets are solely intended to assist designers ("Buyers") who are developing systems that incorporate Sensata products (also referred to herein as "components"). Buyer understands and agrees that Buyer remains responsible for using its independent analysis, valuation, and judgment in designing Buyer's systems and products. Sensata data sheets have been created using standard laboratory conditions and engineering practices. Sensata has not conducted any testing other than that specifically described in the published documentation for a particular data sheet. Sensata may make corrections, enhancements, improvements, and other changes to its data sheets or components without notice.

Buyers are authorized to use Sensata data sheets with the Sensata component(s) identified in each particular data sheet. HOWEVER, NO OTHER LICENSE, EXPRESS OR IMPLIED, BY ESTOPPEL OTHERWISE TO ANY OTHER SENSATA INTELLECTUAL PROPERTY RIGHT, AND NO LICENSE TO ANY THIRD PARTY TECHNOLOGY OR INTELLECTUAL PROPERTY RIGHT, IS GRANTED HEREIN. SENSATA DATA SHEETS ARE PROVIDED "AS IS". SENSATA MAKES NO WARRANTIES OR REPRESENTATIONS WITH REGARD TO THE DATA SHEETS OR USE OF THE DATA SHEETS, EXPRESS, IMPLIED, OR STATUTORY, INCLUDING ACCURACY OR COMPLETENESS. SENSATA DISCLAIMS ANY WARRANTY OF TITLE AND ANY IMPLIED WARRANTIES OF MERCHANTABILITY, FITNESS FOR A PARTICULAR PURPOSE, QUIET ENJOYMENT, QUIET POSSESSION, AND NON-INFRINGEMENT OF ANY THIRD PARTY INTELLECTUAL PROPERTY RIGHTS WITH REGARD TO SENSATA DATA SHEETS OR USE THEREOF.

All products are sold subject to Sensata's terms and conditions of sale supplied at www.sensata.com SENSATA ASSUMES NO LIABILITY FOR APPLICATIONS ASSISTANCE OR THE DESIGN OF BUYERS' PRODUCTS. BUYER ACKNOWLEDGES AND AGREES THAT IT IS SOLELY RESPONSIBLE FOR COMPLIANCE WITH ALL LEGAL, REGULATORY, AND SAFETY-RELATED REQUIREMENTS CONCERNING ITS PRODUCTS, AND ANY USE OF SENSATA COMPONENTS IN ITS APPLICATIONS, NOTWITHSTANDING ANY APPLICATIONS-RELATED INFORMATION OR SUPPORT THAT MAY BE PROVIDED BY SENSATA.

Mailing Address: Sensata Technologies, Inc., 529 Pleasant Street, Attleboro, MA 02703, USA

CONTACT US

Regional head offices:

United States of America

Sensata Technologies

Attleboro, MA

Phone: 508-236-3800

E-mail: support@sensata.com

Netherlands

Sensata Technologies Holland

B.V.

Hengelo

Phone: +31 74 357 8000

E-mail: support@sensata.com

China

Sensata Technologies China

Co., Ltd.

Shanghai

Phone: +8621 2306 1500

E-mail: support@sensata.com