

4

3

2

1

ZONE	REV.	REVISION DESCRIPTION	ECN NO.	DATE

D

D

C

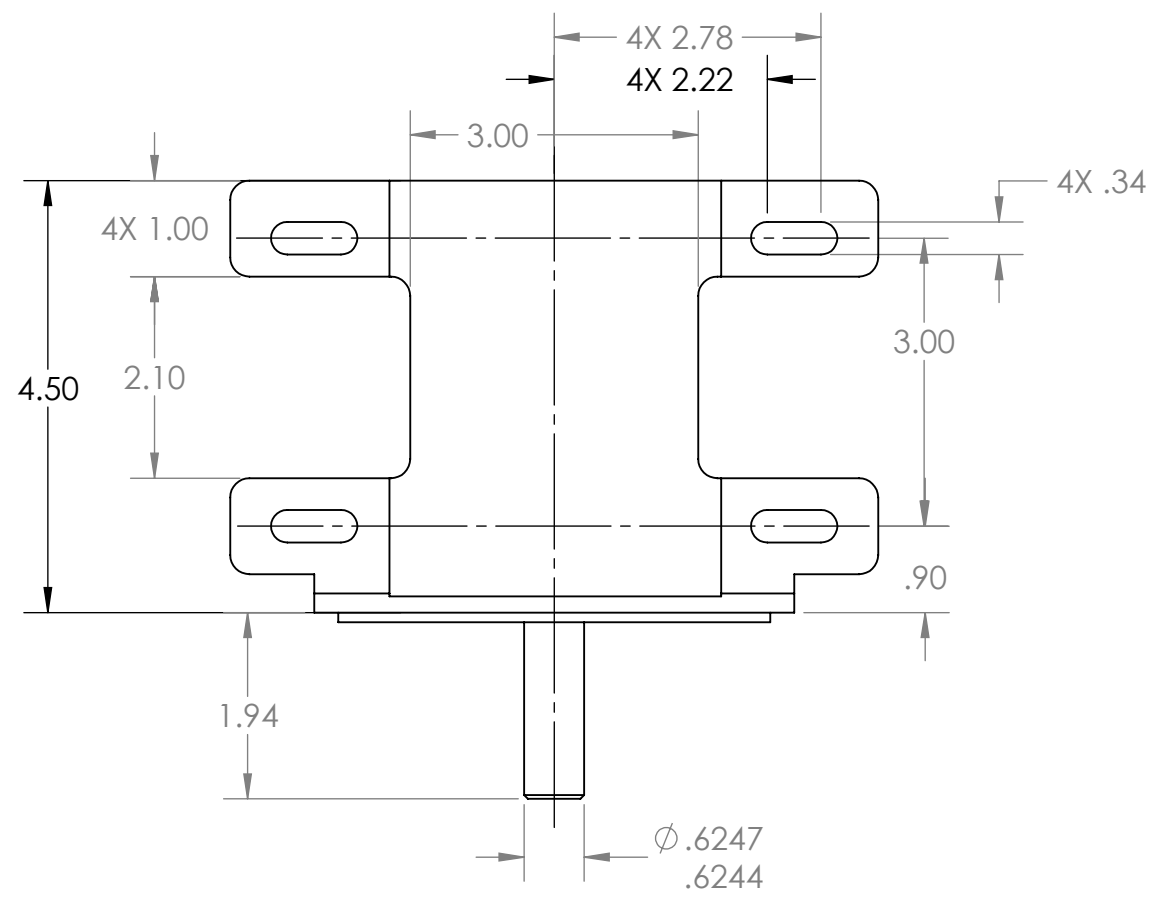
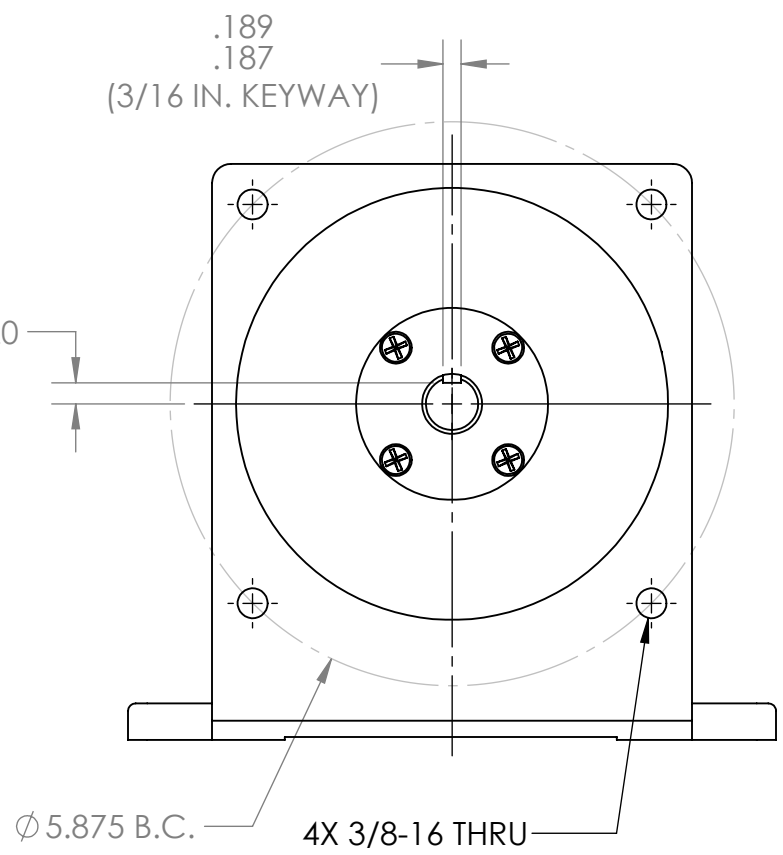
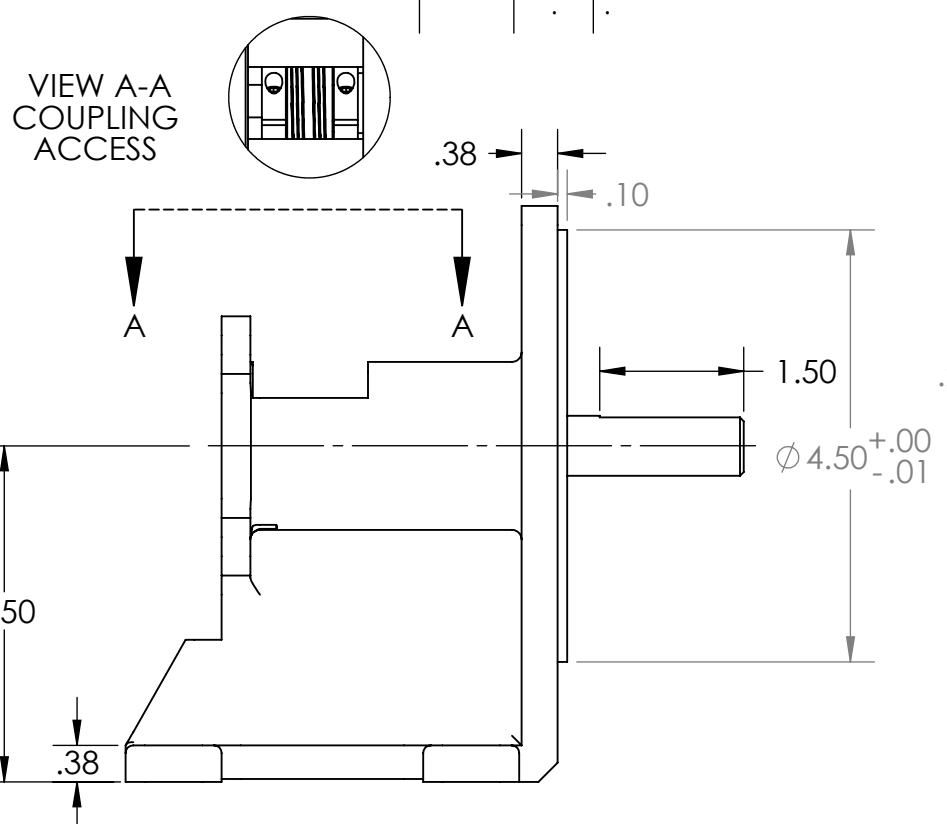
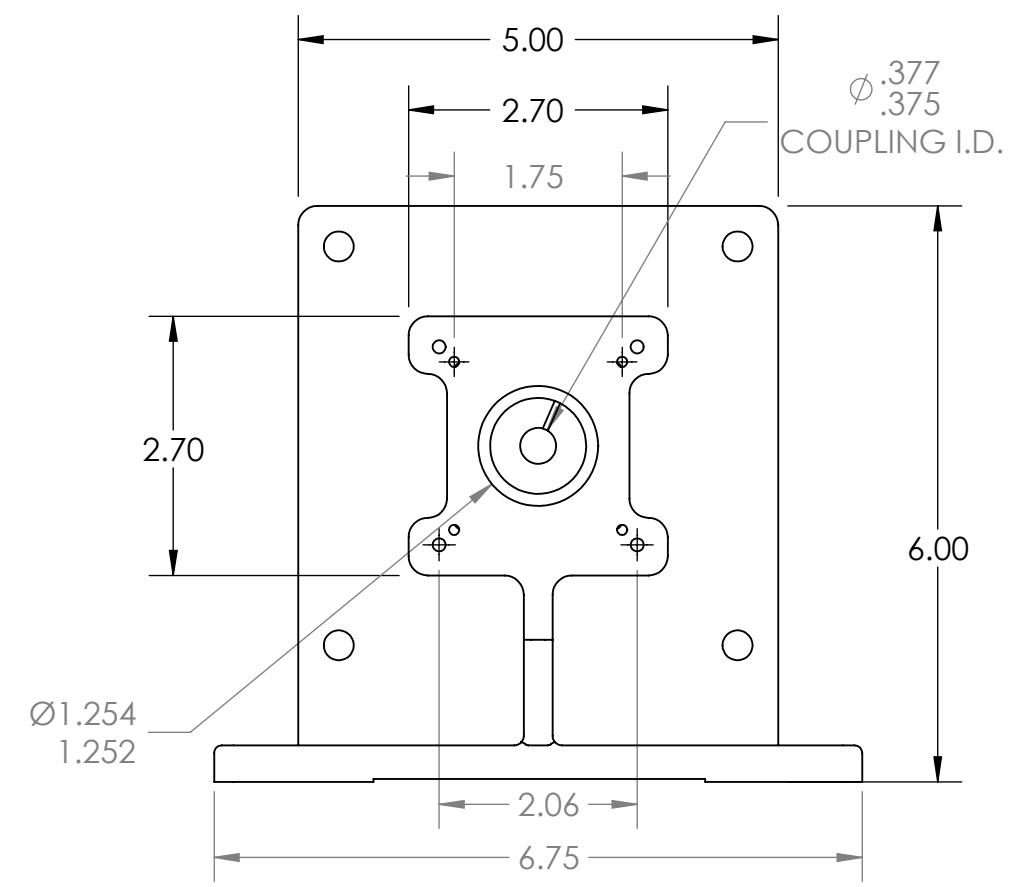
C

B

B

A

A



- NOTES (UNLESS OTHERWISE INDICATED)
1. FOOT MOUNTED HIGH-LOAD BEARING ASSY
 2. FOR USE WITH H25D, H20D, & H38 ENCODERS. SEE SHEET 2 OF 2 FOR DETAILS.
 3. ACCEPTS NEMA 56C FACE ACCESSORY

UNCONTROLLED COPY		BEI SENSORS 1461 LAWRENCE DRIVE THOUSAND OAKS, CA 93120	
FIRST ISSUE DATE: 03/29/19	SENSATA TECHNOLOGIES PROPRIETARY AND CONFIDENTIAL. NEITHER THIS PRINT NOR THE INFORMATION CONTAINED HEREON IS TO BE USED AGAINST THE INTERESTS OF SENSATA TECHNOLOGIES OR AGAINST THE INTERESTS OF ANY OF ITS AFFILIATED COMPANIES OR WHOLLY OWNED SUBSIDIARIES.	TITLE FOOT MOUNTED HIGH-LOAD BEARING ASSEMBLY (NEMA 56)	
DRAWN: DRC		SIZE	DWG NO.
APPROVED: MFB		B 09906-001	
DATE: 03/29/19	INTERPRET DIMENSIONING AND TOLERANCING PER ASME Y14.5-2009. UNLESS OTHERWISE SPECIFIED DIMENSIONS ARE IN INCHES [MILLIMETERS] AND ARE INTENDED AS NOMINAL SEE PRODUCT SPECIFICATIONS FOR MORE DETAILS.	SCALE	1:2
ECN:	DO NOT SCALE DRAWING	THIRD ANGLE PROJECTION	
DATE:		PROJECT: 1	
MATERIAL:	SOLIDWORKS		SHEET 1 OF 2

4

3

2

1

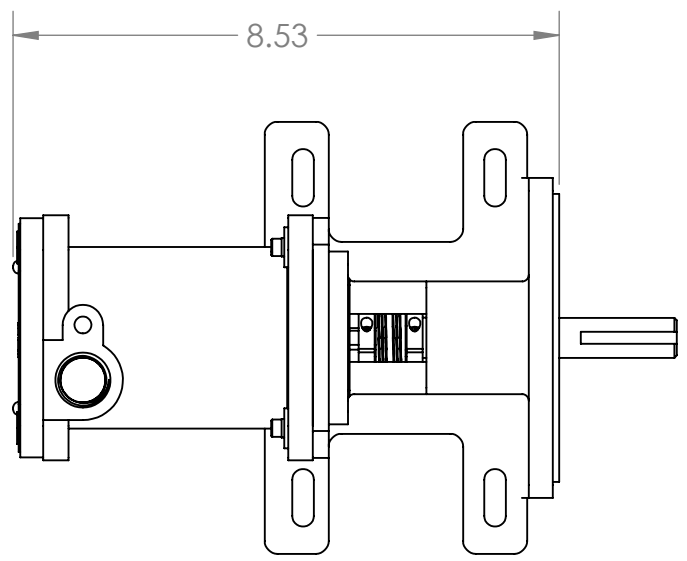
4

3

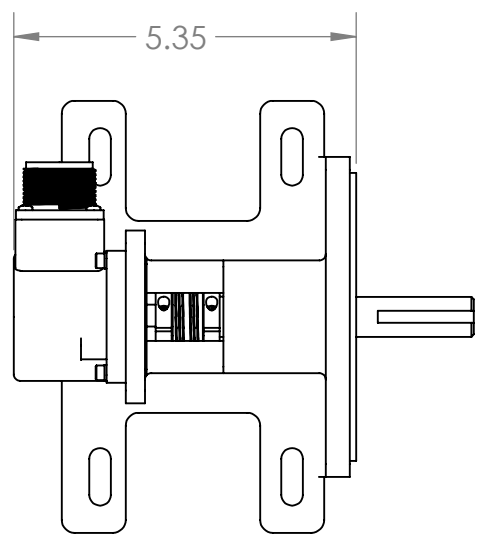
2

1

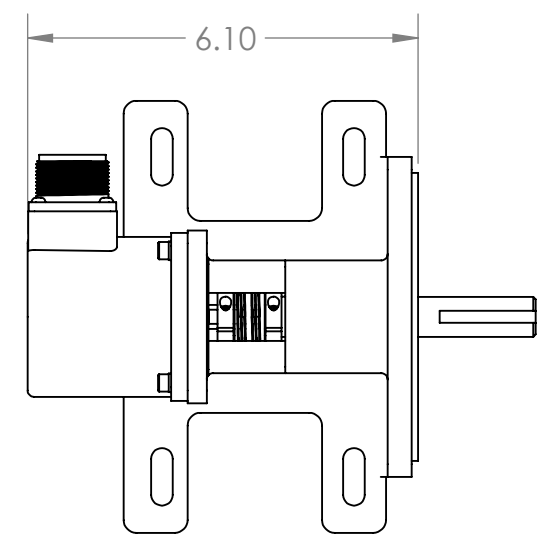
ZONE	REV.	REVISION DESCRIPTION	ECN NO.	DATE



11009-003
HIGH LOAD ASSEMBLY
FOR H38 UL OR H38 CEN
(SOLD SEPARATELY)



11009-002
HIGH LOAD ASSEMBLY
FOR H20 (SOLD
SEPARATELY)

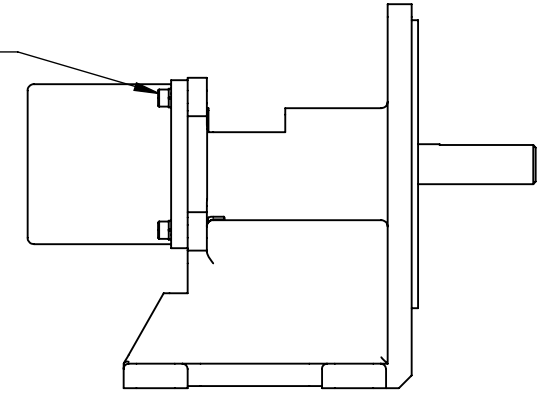
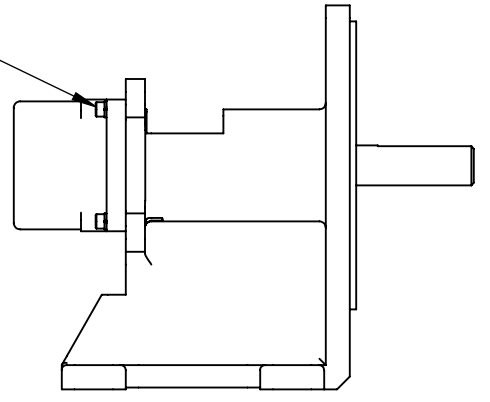
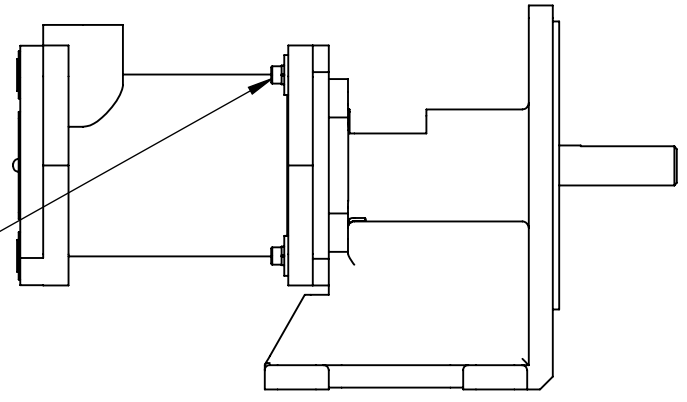


11009-001
HIGH LOAD ASSEMBLY
FOR H25 (SOLD
SEPARATELY)

4X #6-32 X 3/4 HEX
SOCKET CAP
SCREWS AND
LOCK WASHERS
(INCLUDED)

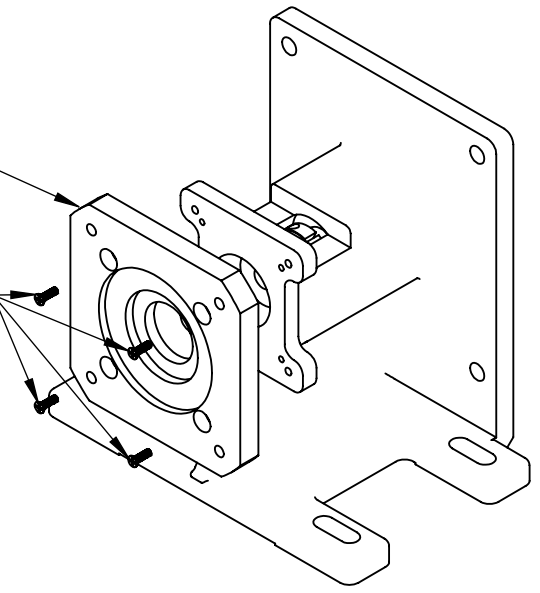
4X #8-32 X 3/4 HEX
SOCKET CAP
SCREWS AND
LOCK WASHERS
(INCLUDED)

4X 1/4-20
HEX SOCKET CAP
SCREWS, LOCK
WASHERS AND
FLAT WASHERS
(INCLUDED)



H38 ADAPTER PLATE
(INCLUDED)

4X #8-32 X 1/2 FLAT
HEAD SCREWS
(INCLUDED)



UNCONTROLLED COPY

FIRST ISSUE DATE: 03/29/19
DRAWN: MFB
APPROVED: DRC
DATE: 03/29/19
ECN:
DATE:
MATERIAL:

SENSATA TECHNOLOGIES PROPRIETARY AND CONFIDENTIAL. NEITHER THIS PRINT NOR THE INFORMATION CONTAINED HEREON IS TO BE USED AGAINST THE INTERESTS OF SENSATA TECHNOLOGIES OR AGAINST THE INTERESTS OF ANY OF ITS AFFILIATED COMPANIES OR WHOLLY OWNED SUBSIDIARIES.

INTERPRET DIMENSIONING AND TOLERANCING PER ASME Y14.5-2009. UNLESS OTHERWISE SPECIFIED DIMENSIONS ARE IN INCHES[MILLIMETERS] AND ARE INTENDED AS NOMINAL SEE PRODUCT SPECIFICATIONS FOR MORE DETAILS.

DO NOT SCALE DRAWING
THIRD ANGLE PROJECTION

Sensata Technologies BEI SENSORS
1461 LAWRENCE DRIVE
THOUSAND OAKS, CA 93120

TITLE
FOOT MOUNTED HIGH-LOAD BEARING ASSY, SHOWN WITH ENCODER OPTIONS

SIZE DWG NO. REV.
B 09906-001 .

SCALE 1:3 SOLIDWORKS SHEET 2 OF 2

4

3

2

1

DEVICE:

PROJECT: