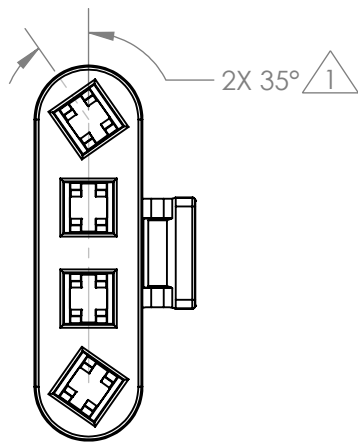
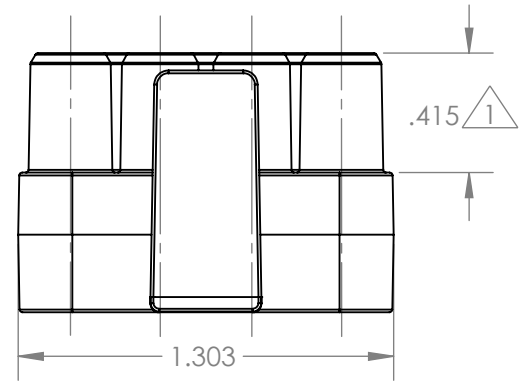
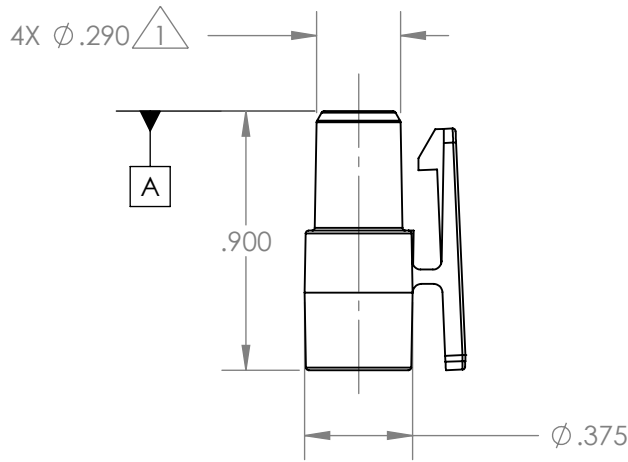
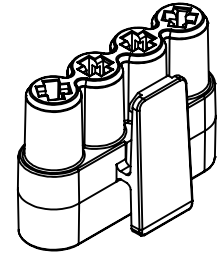
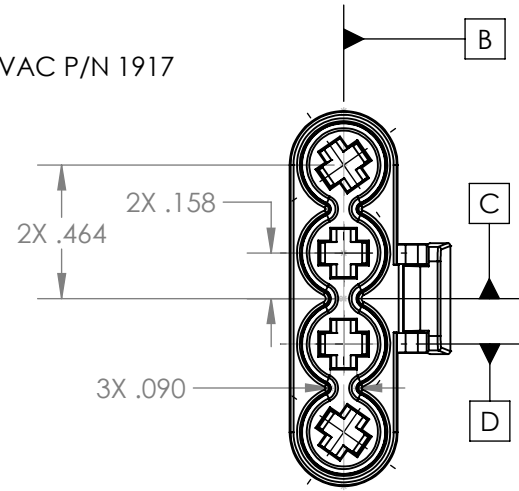


THE INFORMATION CONTAINED IN THIS DRAWING IS THE SOLE PROPERTY OF GIGAVAC LLC. ANY REPRODUCTION IN PART OR WHOLE WITHOUT THE WRITTEN PERMISSION OF GIGAVAC LLC IS PROHIBITED.

NOTES:

1. MATERIAL: PA 66
2. COLOR: BLACK
3. CRITICAL DIMENSION  $\triangle 1$
4. MUST POSITIVELY LOCK INTO GIGAVAC P/N 1917
5. ALL DIMENSIONS IN INCHES

REVISIONS			
REV.	DESCRIPTION	DATE	APPROVED
1	ENGINEERING RELEASE	07/10/2017	T. WOLFGALE
2	DFM DRAFT REVISIONS OF CLIP	07/17/2017	T. WOLFGALE



BOTTOM VIEW  
SCALE 3:2

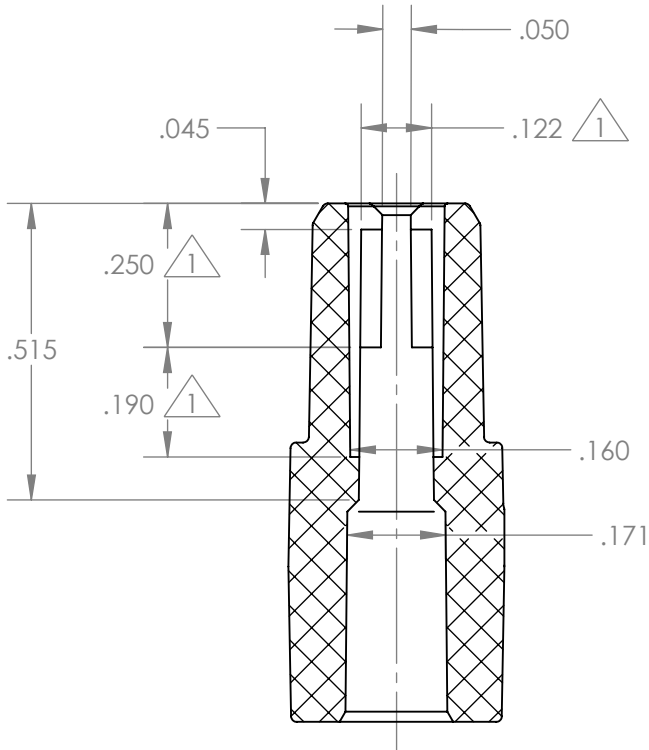
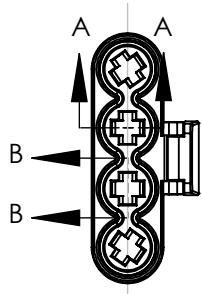
PARTS LIST			
UNLESS OTHERWISE SPECIFIED DIMENSIONS ARE IN INCHES		CAD GENERATED DRAWING, DO NOT MANUALLY UPDATE	
TOLERANCES ARE:		APPROVALS	
.X ±.05	∠ ±.5°	CHECKED	DATE
.XX ±.01	✓ SEE NOTES	C. WATHNE	07/10/17
.XXX ±.005		CHECKED	
.XXXX ±.0005		RESP ENG	
MATERIAL AND FINISH		DRAWN	
SEE NOTES		C. WATHNE	
DO NOT SCALE DRAWING		DATE	
		07/10/17	
		SIZE DWG. NO.	
		A 1910	
		SCALE N/A CAD FILE: 1910.SLDDRW	
		SHEET 1 OF 4	

**GIGAVAC™**  
6382 ROSE LANE, CARPINTERIA, CA  
www.gigavac.com

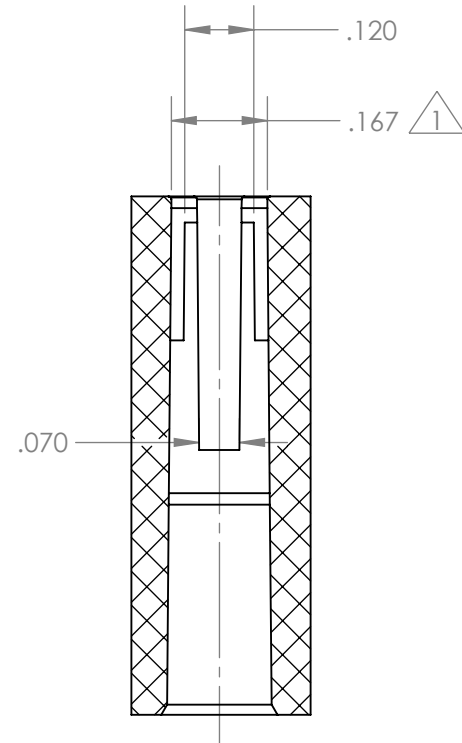
Connector, Aux, GV350

REV 2

THE INFORMATION CONTAINED IN THIS DRAWING IS THE SOLE PROPERTY OF GIGAVAC LLC. ANY REPRODUCTION IN PART OR WHOLE WITHOUT THE WRITTEN PERMISSION OF GIGAVAC LLC IS PROHIBITED.



FOUR TIMES  
SECTION A-A  
SCALE 3 : 1



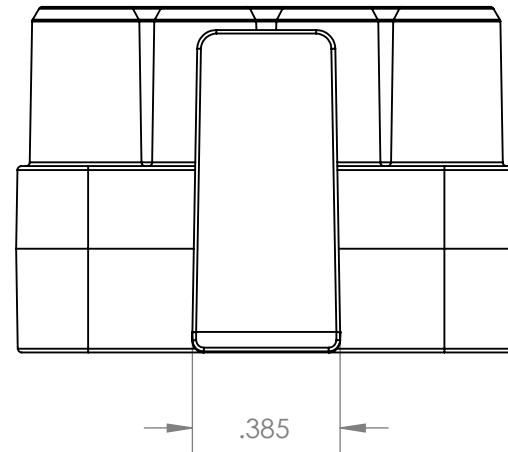
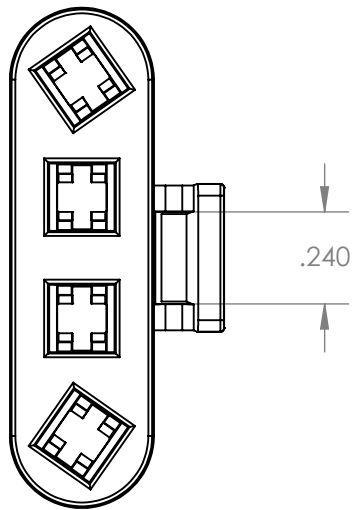
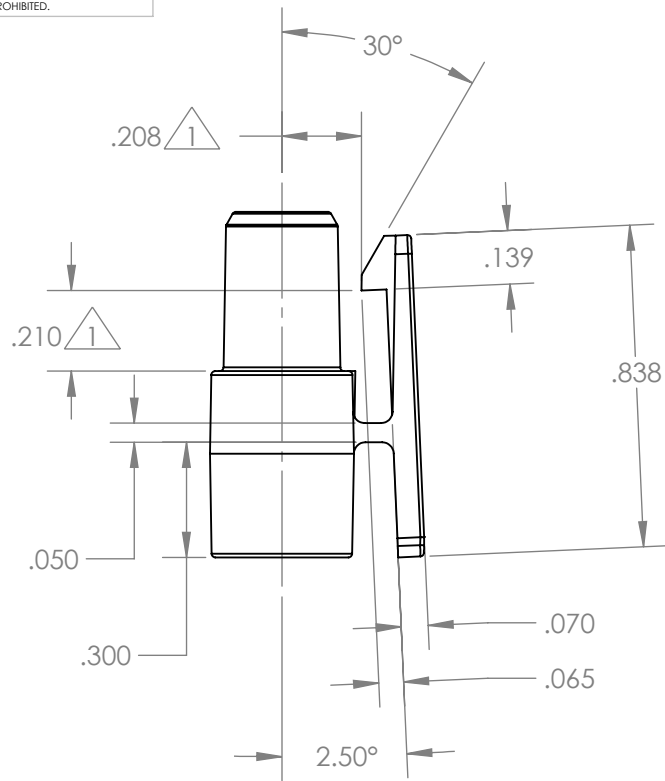
FOUR TIMES  
SECTION B-B  
SCALE 3 : 1

**GIGAVAC™**  
6382 ROSE LANE, CARPINTERIA, CA  
www.gigavac.com

Connector, Aux, GV350

SIZE	DWG. NO.	REV
A	1910	2
SCALE 3:1	CAD FILE: 1910.SLDDRW	SHEET 2 OF 4

THE INFORMATION CONTAINED IN THIS DRAWING IS THE SOLE PROPERTY OF GIGAVAC LLC. ANY REPRODUCTION IN PART OR WHOLE WITHOUT THE WRITTEN PERMISSION OF GIGAVAC LLC IS PROHIBITED.

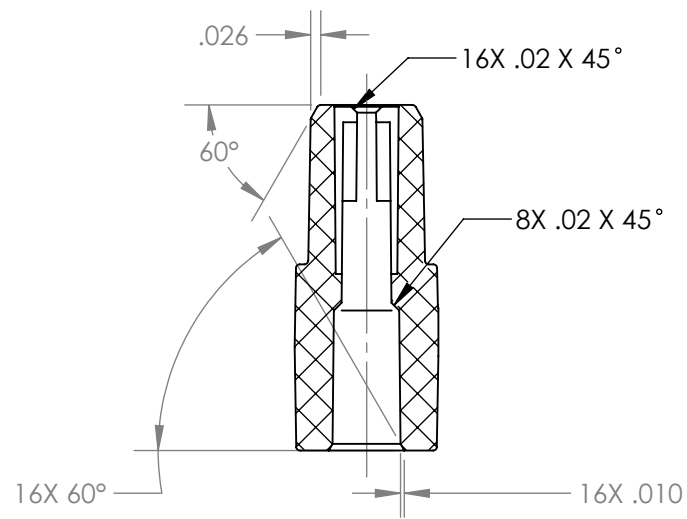
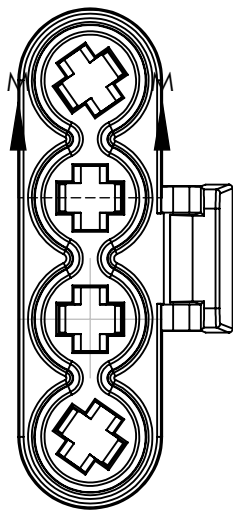


**GIGAVAC™**  
6382 ROSE LANE, CARPINTERIA, CA  
www.gigavac.com

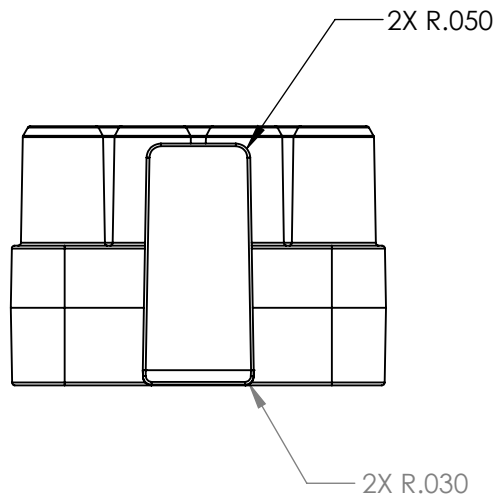
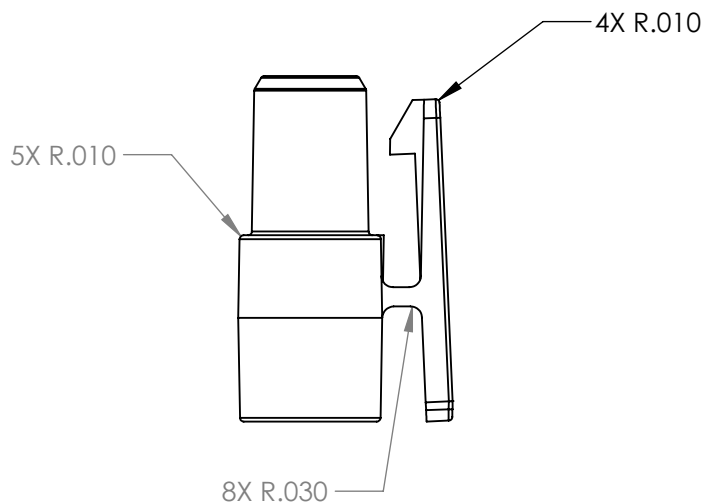
Connector, Aux, GV350

SIZE	DWG. NO.	REV
A	1910	2
SCALE 2:1	CAD FILE: 1910.SLDDRW	SHEET 3 OF 4

THE INFORMATION CONTAINED IN THIS DRAWING IS THE SOLE PROPERTY OF GIGAVAC LLC. ANY REPRODUCTION IN PART OR WHOLE WITHOUT THE WRITTEN PERMISSION OF GIGAVAC LLC IS PROHIBITED.



SECTION M-M



<b>GIGAVAC™</b> 6382 ROSE LANE, CARPINTERIA, CA www.gigavac.com		
Connector, Aux, GV350		
SIZE A	DWG. NO. 1910	REV 2
SCALE N/A	CAD FILE: 1910.SLDDRW	SHEET 4 OF 4

---

Datasheets provided by Sensata Technologies, Inc., its subsidiaries and/or affiliates (“Sensata”) are solely intended to assist third parties (“Buyers”) who are developing systems that incorporate Sensata products (also referred to herein as “components”). Buyer understands and agrees that Buyer remains responsible for using its independent analysis, valuation, and judgment in designing Buyer’s systems and products. Sensata datasheets have been created using standard laboratory conditions and engineering practices. Sensata has not conducted any testing other than that specifically described in the published documentation for a particular datasheet. Sensata may make corrections, enhancements, improvements, and other changes to its datasheets or components without notice.

Buyers are authorized to use Sensata datasheets with the Sensata component(s) identified in each particular datasheet. HOWEVER, NO OTHER LICENSE, EXPRESS OR IMPLIED, BY ESTOPPEL OR OTHERWISE TO ANY OTHER SENSATA INTELLECTUAL PROPERTY RIGHT, AND NO LICENSE TO ANY THIRD PARTY TECHNOLOGY OR INTELLECTUAL PROPERTY RIGHT, IS GRANTED HEREIN. SENSATA DATASHEETS ARE PROVIDED “AS IS”. SENSATA MAKES NO WARRANTIES OR REPRESENTATIONS WITH REGARD TO THE DATASHEETS OR USE OF THE DATASHEETS, EXPRESS, IMPLIED, OR STATUTORY, INCLUDING ACCURACY OR COMPLETENESS. SENSATA DISCLAIMS ANY WARRANTY OF TITLE AND ANY IMPLIED WARRANTIES OF MERCHANTABILITY, FITNESS FOR A PARTICULAR PURPOSE, QUIET ENJOYMENT, QUIET POSSESSION, AND NON-INFRINGEMENT OF ANY THIRD PARTY INTELLECTUAL PROPERTY RIGHTS WITH REGARD TO SENSATA DATASHEETS OR USE THEREOF.

All products are sold subject to Sensata’s terms and conditions of sale supplied at [www.sensata.com](http://www.sensata.com). SENSATA ASSUMES NO LIABILITY FOR APPLICATIONS ASSISTANCE OR THE DESIGN OF BUYERS’ PRODUCTS. BUYER ACKNOWLEDGES AND AGREES THAT IT IS SOLELY RESPONSIBLE FOR COMPLIANCE WITH ALL LEGAL, REGULATORY, AND SAFETY-RELATED REQUIREMENTS CONCERNING ITS PRODUCTS, AND ANY USE OF SENSATA COMPONENTS IN ITS APPLICATIONS, NOTWITHSTANDING ANY APPLICATIONS-RELATED INFORMATION OR SUPPORT THAT MAY BE PROVIDED BY SENSATA.

Mailing Address: Sensata Technologies, Inc., 529 Pleasant Street, Attleboro, MA 02703, USA

## CONTACT US

### Regional head offices:

#### United States of America

Sensata Technologies

Attleboro, MA

**Phone:** 508-236-3800

**E-mail:** [support@sensata.com](mailto:support@sensata.com)

#### Netherlands

Sensata Technologies Holland B.V.

Hengelo

**Phone:** +31 74 357 8000

**E-mail:** [support@sensata.com](mailto:support@sensata.com)

#### China

Sensata Technologies China Co., Ltd.

Shanghai

**Phone:** +8621 2306 1500

**E-mail:** [support@sensata.com](mailto:support@sensata.com)

Copyright © 2023 Sensata Technologies, Inc.