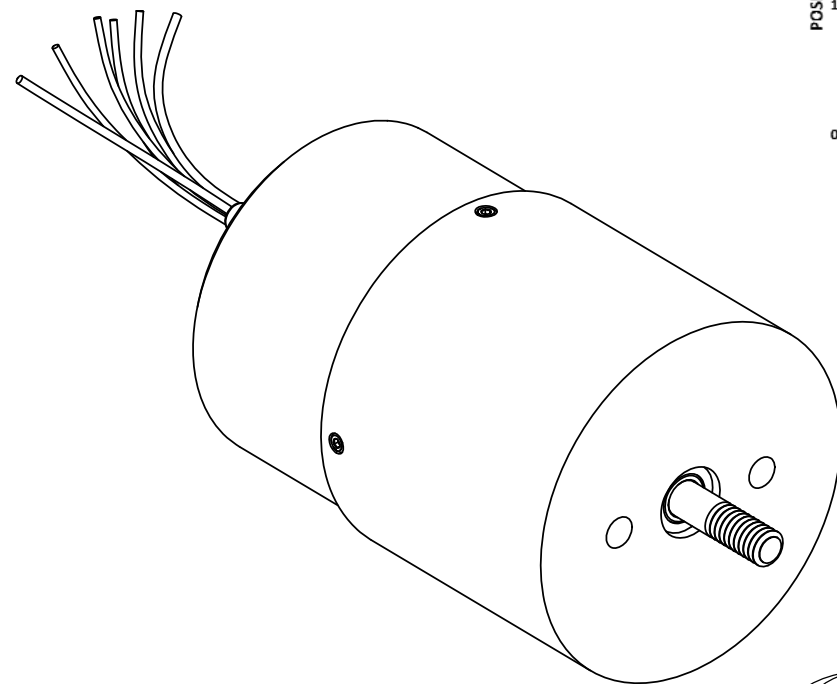


Winding Constants *	Units	Tol	Symbol	Wdg	A
DC Resistance	Ohms	± 12.5%	R	4.7	
Voltage @ F _p	Volts	Nominal	V _p	33.0	
Current @ F _p	Amps	Nominal	I _p	7.02	
Force Sensitivity	LB/Amp	± 10%	K _F	2.85	
	N/Amp	± 10%		12.68	
Back EMF Constant	V/(ft/sec)	± 10%	K _B	3.86	
	V/(m/sec)	± 10%		12.68	
Inductance ****	milli-Henry	± 30%	L	1.25	

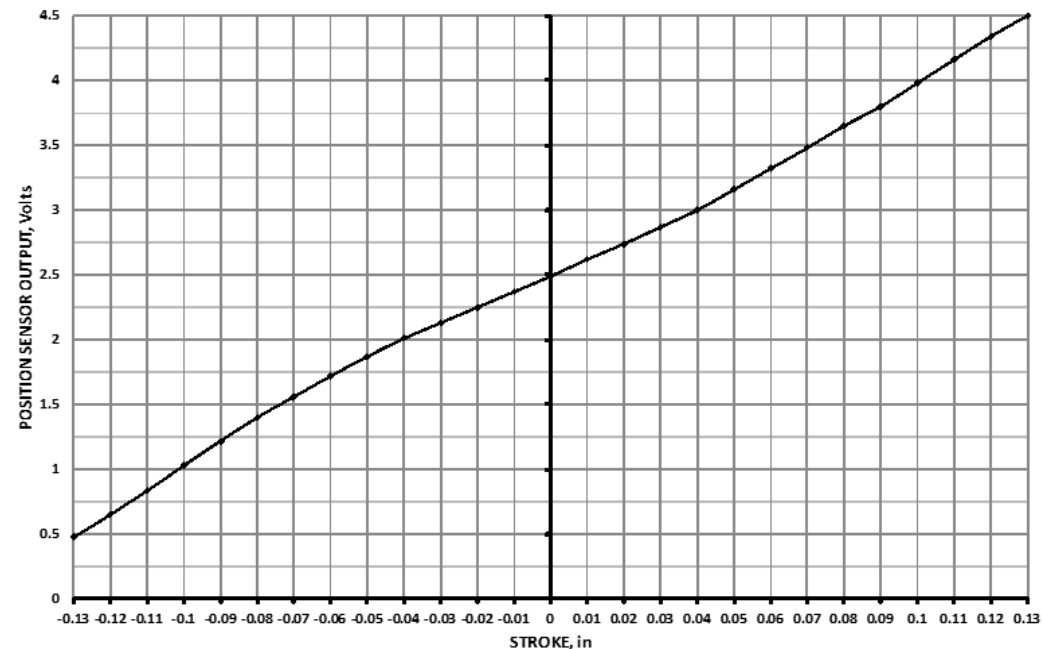
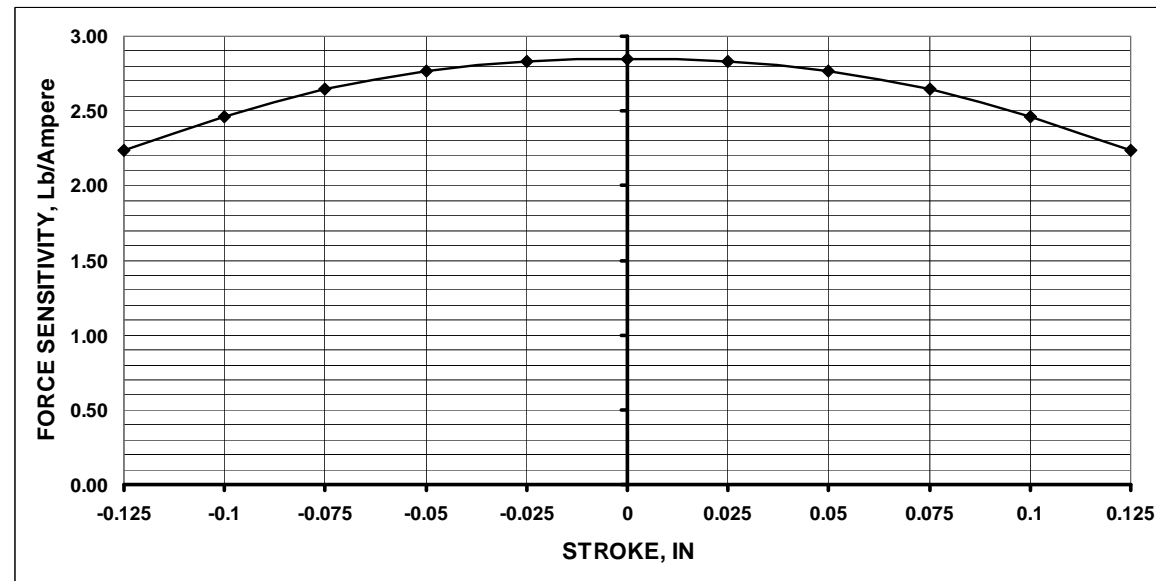
Linear Actuator Parameters *	Units	Symbol	Value
Peak Force **	LB	F _P	20.0
	N		89.0
Continous Stall Force ***	LB	F _{CS}	3.82
	N		17.0
Actuator Constant	LB/√Watt	K _A	1.31
	N/√Watt		5.83
Electrical Time Constant	milli-sec	τ _E	0.27
Mechanical Time Constant	milli-sec	τ _M	1.51
Theoretical Acceleration	ft/sec ²	α _T	5647.9
	m/sec ²		1721.5
Max Theoretical Frequency @ Full Stroke and Sinusoidal / Triangular Motion	Hz	f _{max}	117.2/130.2
Power I ² R @ F _p	Watts	P _P	232
Stroke:	± in		0.12
	± mm		3.04
Clearance on Each side of Coil	in		0.018
	mm		0.46
Thermal Resistance of Coil	°C/Watt	θ _{TH}	10.2
Maximum Allowable Coil Winding Temp	°C	Temp	155
Weight of Coil Assembly	OZ	WT _C	1.82
	g		51.7
Total Weight	OZ	WT _T	10.5
	g		297

* AT MID-STROKE POSITION AND @ 25 °C AMBIENT TEMPERATURE.
 ** 10 SECONDS @ 25 °C AMBIENT & 155 °C COIL TEMPERATURE.
 *** @25 °C AMBIENT & 155 °C COIL TEMPERATURE.
 **** MEASURED AT 1000 Hz.

POSITION SENSOR		
LEAD WIRE	IDENTIFICATION	DESCRIPTION
YELLOW	V _{CC}	INPUT VOLATAGE (5 VOLTS)
GRAY	GND	GROUND
BROWN	V _O	OUTPUT VOLTAGE
WHITE	V _{PP}	VOLTAGE FOR PROGRAMMING ONLY, NOT TO BE USED BY CUSTOMER

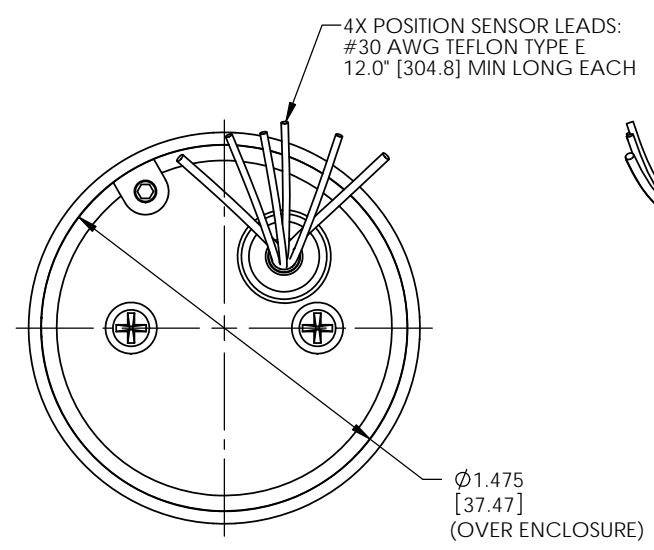


ZONE	REV.	REVISION DESCRIPTION	ECN NO.	DATE
	X4			

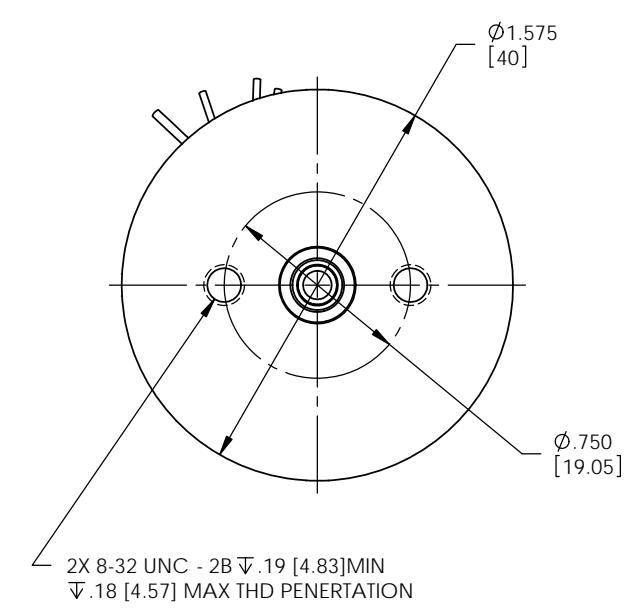
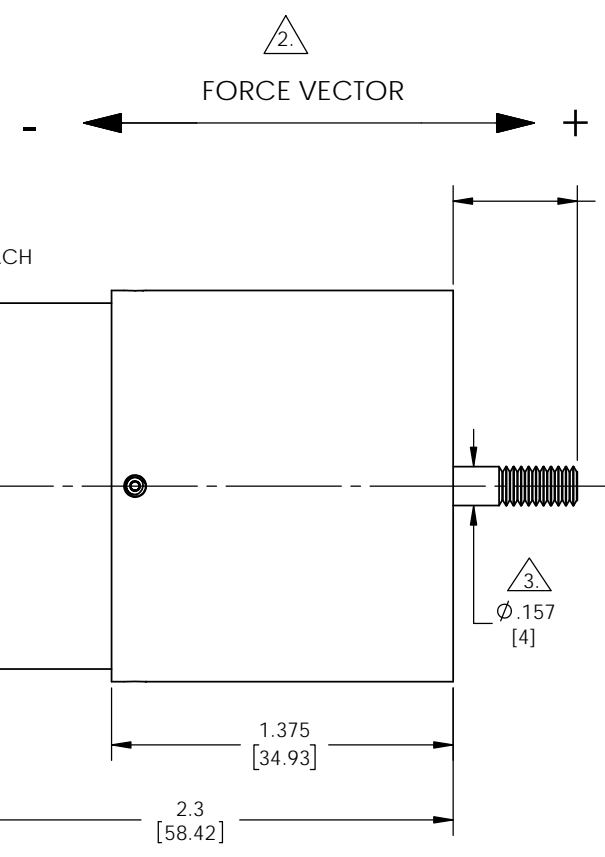


SOLIDWORKS

FOR REFERENCE ONLY, CHECK LATEST REVISION BEFORE USE.		529 PLEASANT STREET P.O. BOX 2964 ATTLEBORO, MA 02703
DRAWN DATE ENGINEER DATE APPROVED M. GODKIN DATE 05/31/19 APPROVED	SENSATA TECHNOLOGIES PROPRIETARY AND CONFIDENTIAL. NEITHER THIS PRINT NOR THE INFORMATION CONTAINED HEREON IS TO BE USED AGAINST THE INTERESTS OF ANY OF ITS AFFILIATED COMPANIES OR WHOLLY OWNED SUBSIDIARIES. INTERPRET DIMENSIONING AND TOLERANCING PER ASME Y14.5-2009. UNLESS OTHERWISE SPECIFIED DIMENSIONS ARE IN INCHES. TOLERANCES DECIMALS ANGLES X.X ± 0.03 X.X° ± 0°30' X.XX ± 0.01 X.XXX ± 0.005	
DO NOT SCALE DRAWING	THIRD ANGLE PROJECTION	SIZE DWG NO. REV. C LAS16-23-000A-P01-DASH X4 SCALE 2:1 SHEET 1 OF 2



2X VOICE COIL LEADS:
#26 AWG TEFLON TYPE E
12.0" [304.8] MIN LONG EACH
RED, BLK



(DASH)	SHAFT END CONFIGURATION
-4S	4mm Diameter
-4E	4mm Diameter, External Thread M4x0.7 X 8mm Long

- NOTES: UNLESS OTHERWISE SPECIFIED
1. INCH DRAWING. DIMENSIONS IN BRACKETS [] ARE IN MILLIMETERS AND ARE FOR REFERENCE ONLY.
 2. A POSITIVE (+) VOLTAGE APPLIED TO THE RED LEAD WILL PRODUCE A FORCE ON THE COIL ASSEMBLY (SHAFT) IN THE POSITIVE (+) DIRECTION.
 3. -4E SHAFT CONFIGURATION SHOWN.

Sensata Technologies

529 PLEASANT STREET
P.O. BOX 2964
ATTLEBORO, MA 02703

RoHS

SIZE	DWG NO.	REV.
C	LAS16-23-000A-P01-DASH	X4
SCALE	2:1	SOLIDWORKS SHEET 2 OF 2