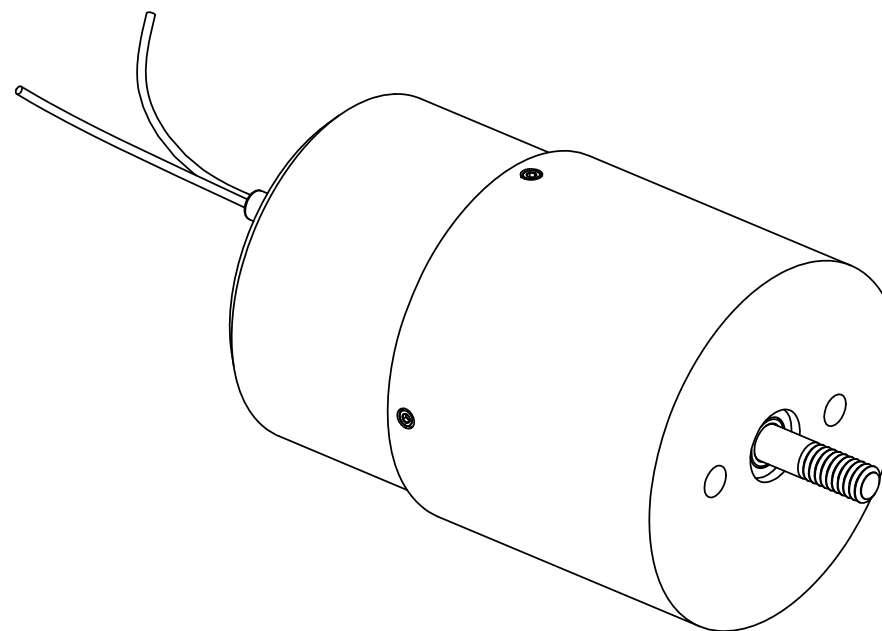
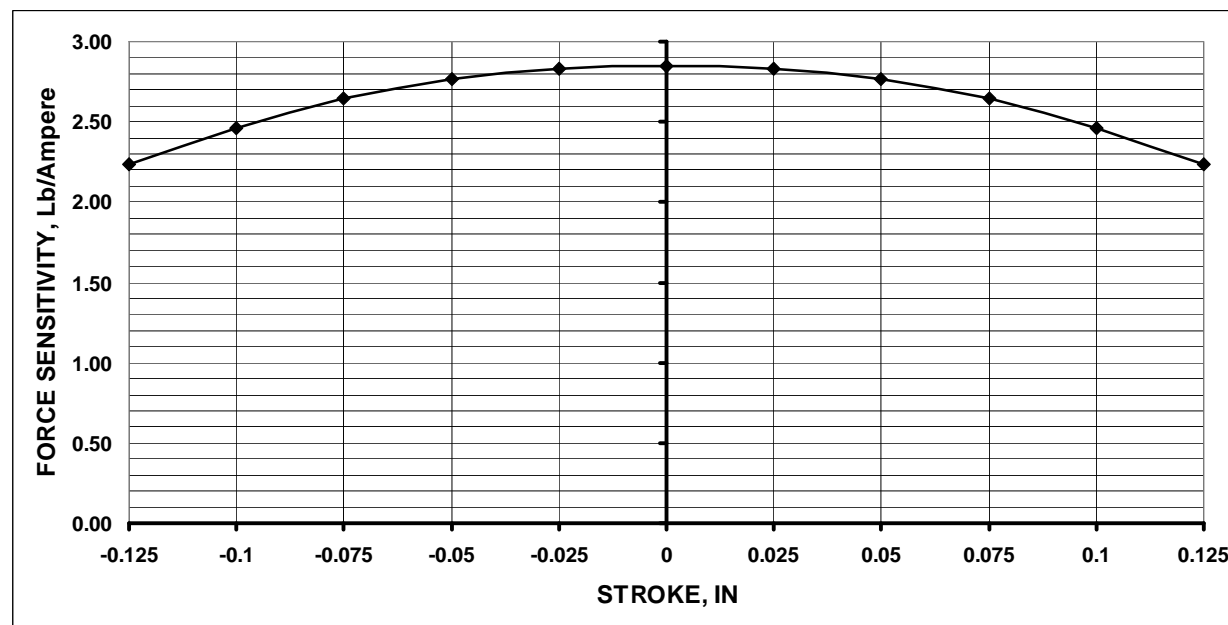


Winding Constants *	Units	Tol	Symbol	Wdg A
DC Resistance	Ohms	± 12.5%	R	4.7
Voltage @ F _P	Volts	Nominal	V _P	33.0
Current @ F _P	Amps	Nominal	I _P	7.02
Force Sensitivity	LB/Amp	± 10%	K _F	2.85
	N/Amp	± 10%		12.68
Back EMF Constant	V/(ft/sec)	± 10%	K _B	3.86
	V/(m/sec)	± 10%		12.68
Inductance ****	micro-Henry	± 30%	L	1.25

Linear Actuator Parameters *	Units	Symbol	Value
Peak Force **	LB	F _P	20.0
	N		89.0
Continuous Stall Force ***	LB	F _{CS}	3.82
	N		17.0
Actuator Constant	LB/√Watt	K _A	1.31
	N/√Watt		5.83
Electrical Time Constant	micro-sec	τ _E	270
Mechanical Time Constant	milli-sec	τ _M	1.46
Theoretical Acceleration	ft/sec ²	α _T	5851.6
	m/sec ²		1783.6
Max Theoretical Frequency @ Full Stroke and Sinusoidal / Triangular Motion	Hz	f _{max}	119.3/132.5
Power I ² R @ F _P	Watts	P _P	232
Stroke:	± in		0.125
	± mm		3.18
Clearance on Each side of Coil	in		0.018
	mm		0.46
Thermal Resistance of Coil	°C/Watt	θ _{TH}	10.2
Maximum Allowable Coil Winding Temp	°C	Temp	155
Weight of Coil Assembly	OZ	WT _C	1.76
	g		49.9
Total Weight	OZ	WT _T	10.4
	g		295.2

* AT MID-STROKE POSITION AND @ 25°C AMBIENT TEMPERATURE.
 ** 10 SECONDS @ 25°C AMBIENT & 155°C COIL TEMPERATURE.
 *** @25°C AMBIENT & 155°C COIL TEMPERATURE.
 **** MEASURED AT 1000 Hz.

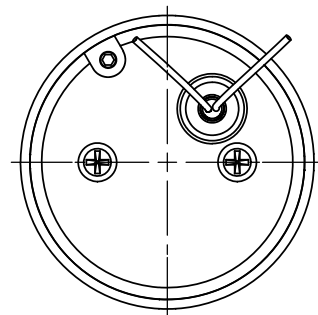
ZONE	REV.	REVISION DESCRIPTION	ECN NO.	DATE
	X3			



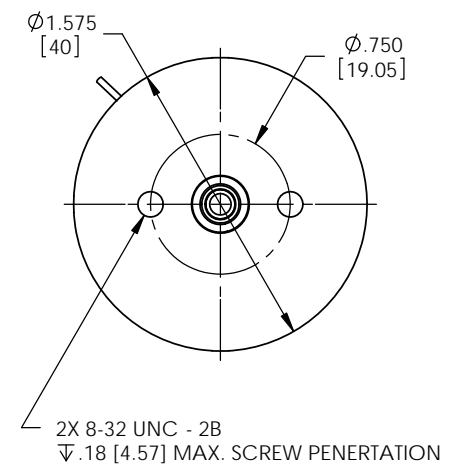
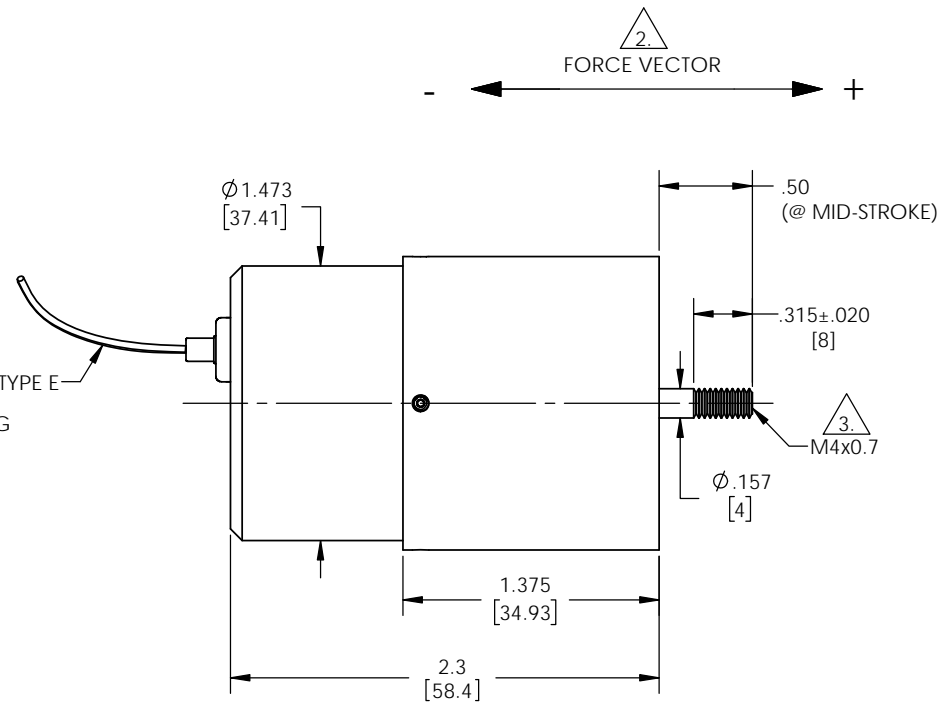
SOLIDWORKS

FOR REFERENCE ONLY, CHECK LATEST REVISION BEFORE USE.		529 PLEASANT STREET P.O. BOX 2964 ATTLEBORO, MA 02703	
DRAWN DATE ENGINEER	SENSATA TECHNOLOGIES PROPRIETARY AND CONFIDENTIAL. NEITHER THIS PRINT NOR THE INFORMATION CONTAINED HEREON IS TO BE USED AGAINST THE INTERESTS OF ANY OF ITS AFFILIATED COMPANIES OR WHOLLY OWNED SUBSIDIARIES.		
DATE APPROVED	INTERPRET DIMENSIONING AND TOLERANCING PER ASME Y14.5-2009. UNLESS OTHERWISE SPECIFIED DIMENSIONS ARE IN INCHES.		
DATE APPROVED	TOLERANCES DECIMALS ANGLES X.X ± 0.03 X.X° ± 0°30' X.XX ± 0.01 X.XXX ± 0.005		
DATE APPROVED	DO NOT SCALE DRAWING	THIRD ANGLE PROJECTION	
TITLE		SIZE	REV.
LINEAR ACTUATOR HOUSED		C	X3
DWG NO.		SCALE	SHEET
LAH16-23-000A-DASH NO.		2:1	1 OF 2





LEAD WIRES: TEFLON TYPE E
 2X #26 AWG
 12.0" [305] MIN. LONG
 (RED, BLK)



NOTES: UNLESS OTHERWISE SPECIFIED

1. INCH DRAWING. DIMENSIONS IN BRACKETS [] ARE IN MILLIMETERS AND ARE FOR REFERENCE ONLY.

2. A POSITIVE (+) VOLATAGE APPLIED TO THE MARKED LEAD WIRE WILL PRODUCE A FORCE ON THE COIL ASSEMBLY (SHAFT) IN THE POSITIVE (+) DIRECTION.

3. -4E SHAFT CONFIGURATION SHOWN.

(DASH)	SHAFT END CONFIGURATION
-4S	4mm Diameter
-4E	4mm Diameter, External Thread M4x0.7 X 8mm Long



Sensata Technologies
 529 PLEASANT STREET
 P.O. BOX 2964
 ATTLEBORO, MA 02703

SIZE	DWG NO.	REV.
C	LAH16-23-000A-DASH NO.	X3
SCALE	2:1	SOLIDWORKS SHEET 2 OF 2