

4

3

2

1

D

D

C

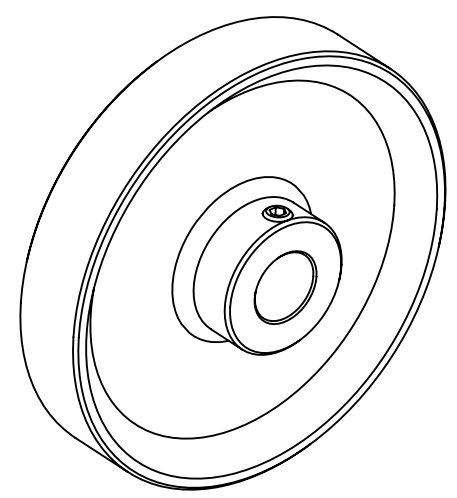
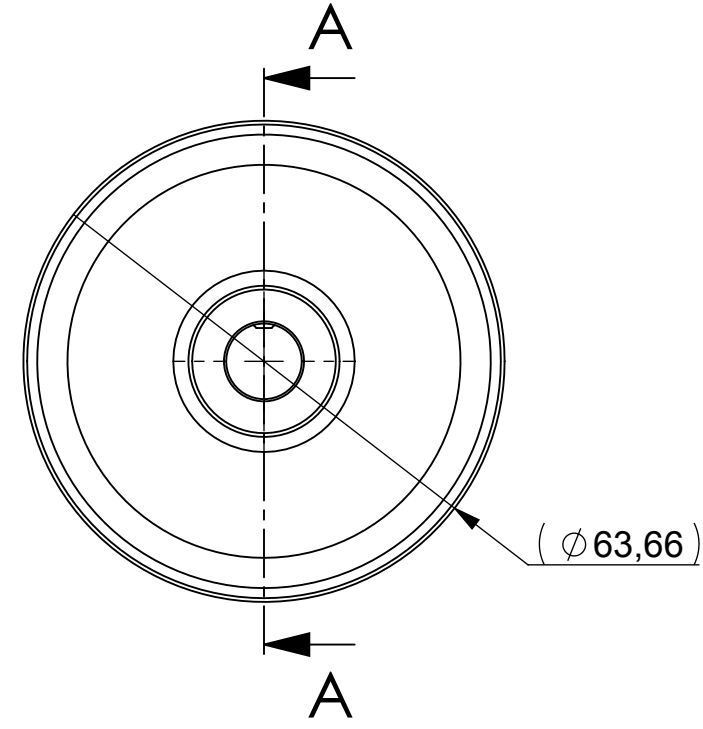
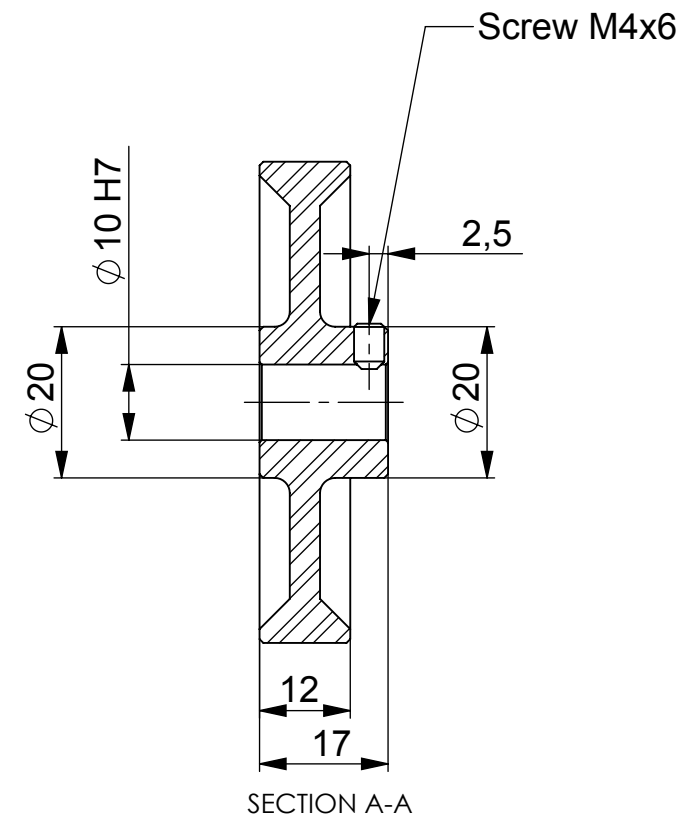
C

B

B


A

A



Part Number	9108/10	9109/10	9110/10
Material Core	Aluminum	Aluminum	Aluminum
Material Running surface	Rubber	Rubber	Aluminum
Running surface Structure	Smooth	Studded	Cross-hatched knurling

Operating temperature: -30°C to 80°C

UNCONTROLLED COPY		 BEI SENSORS SAS Espace Européen de l'Entreprise 9, rue de Copenhague BP 70044 - F 67013 STRASBOURG Cedex Tel : +33 (0)3 88 20 81 40	
FIRST ISSUE DATE : 23/07/2018 DRAWN : RHM APPROVED : JHH DATE : 23/07/2018	SENSATA TECHNOLOGIES PROPRIETARY AND CONFIDENTIAL. NEITHER THIS PRINT NOR THE INFORMATION CONTAINED HEREON IS TO BE USED AGAINST THE INTERESTS OF SENSATA TECHNOLOGIES OR AGAINST THE INTERESTS OF ANY OF ITS AFFILIATED COMPANIES OR WHOLLY OWNED SUBSIDIARIES.		BEI Sensors
ECN : DATE :	UNLESS OTHERWISE SPECIFIED DIMENSIONS ARE IN MILLIMETERS [INCHES] AND ARE INTENDED AS NOMINAL. SEE PRODUCT SPECIFICATION FOR MORE DETAILS.		TITLE 200mm Measuring Wheel
Housing material : Aluminum Flange material : Shaft material :	DO NOT SCALE DRAWING	EUROPEAN SYSTEM	SIZE A3 DWG NO. M075 REV. A
SCALE 1/1		SOLIDWORKS	SHEET 1 OF 1

4

3

2

1

DEVICE:

PROJECT: