



## | NEMA 56C FACE ADAPTER

PART NUMBERS: 11012-002, 11012-003, 11012-006

### Introduction

This sturdy cast aluminum adapter is used to easily mount a Model H25E with an F1 face mount, an H25D or an H38D encoder to a standard 4.5 in. diameter NEMA 56 motor frame. The kit includes the adapter, encoder mounting hardware and a flexible shaft coupling to accommodate different motor accessory shafts. Rubber plugs are provided to seal the coupling access holes after installation.



### Features

- Compact Adapter for encoders
- Mates to NEMA 56C face
- Coupling is completely enclosed
- Fits three different encoder models
- Easy to use



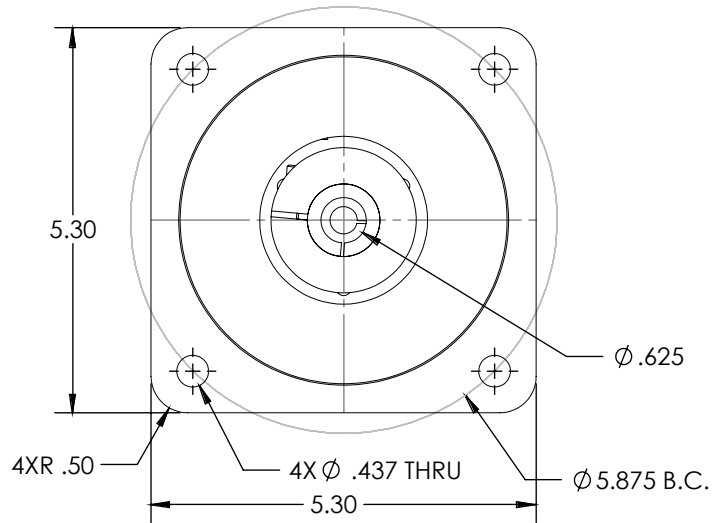
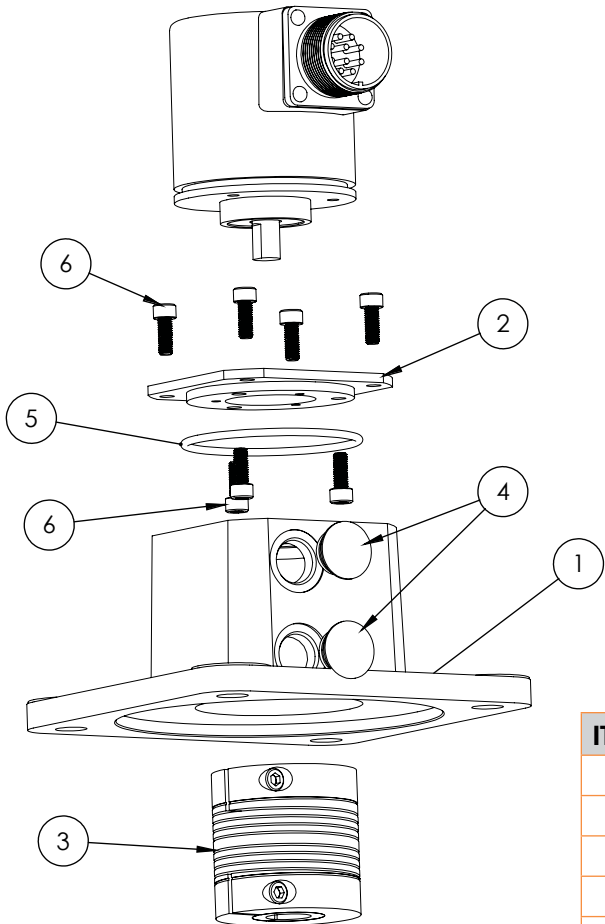
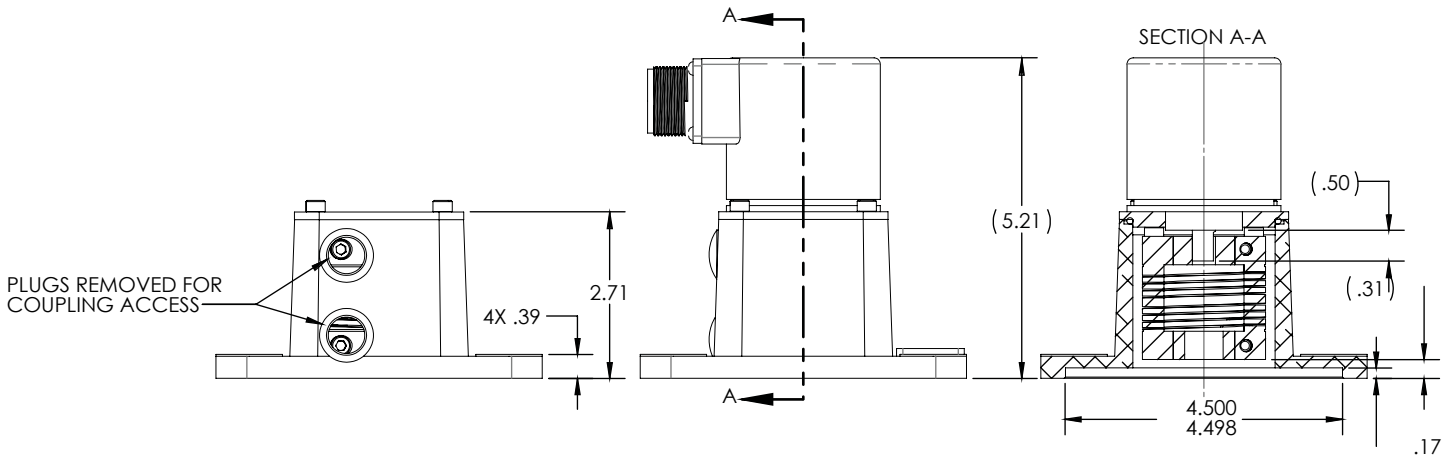
### SPECIFICATIONS

Encoder Model	Adapter	Shaft length	Hardware to mount encoder to accessory	PN to Order
H25E-F1	Includes Delrin insert	Requires 0.50" shaft length	Included	11012-002
H25D	N/R	Requires 0.50" shaft length	Included	11012-006
H38D - UL	Includes Delrin insert	N/C	Included	11012-003



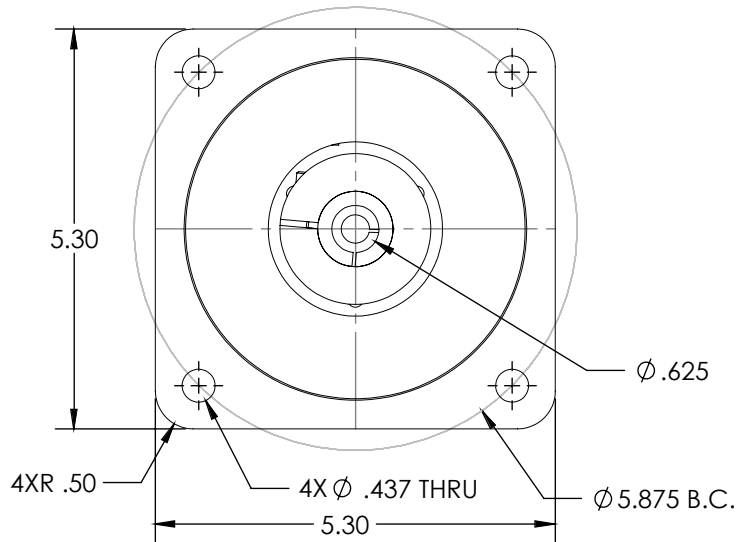
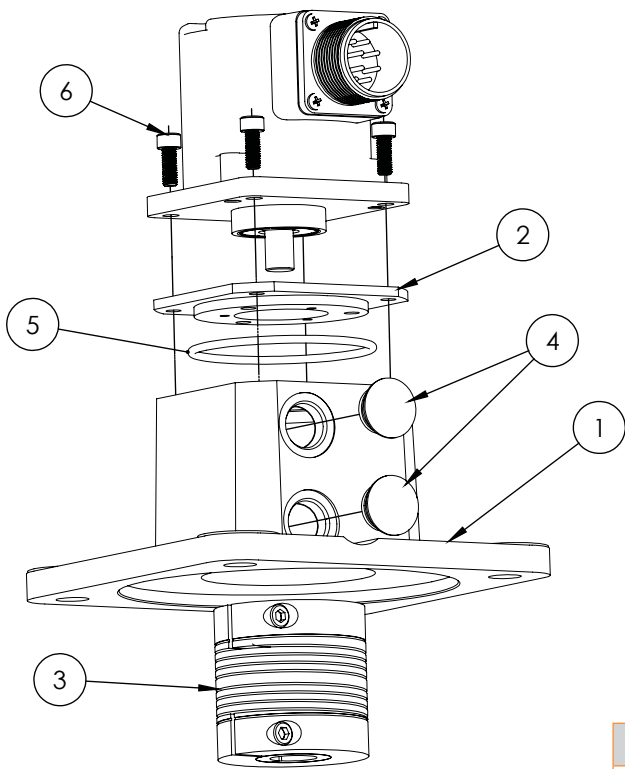
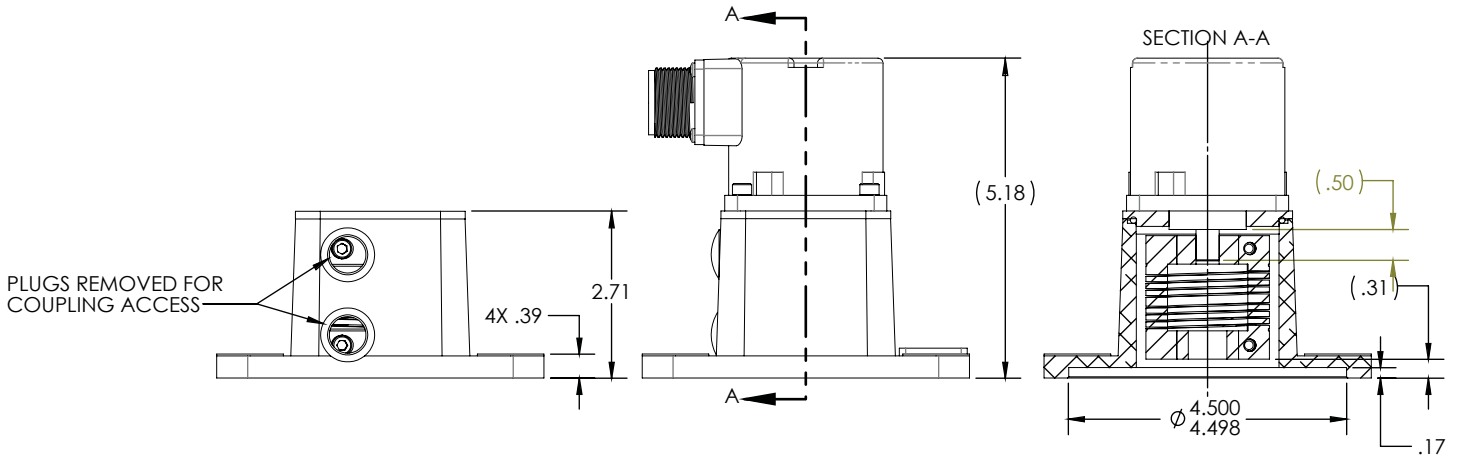
**DIMENSIONS**  
All dimensions are in inches

**P/N 11012-002 NEMA 56C ADAPTER AND HARDWARE FOR H25E-F1 ENCODER WITH 0.50 SHAFT EXTENSION (SOLD SEPARATELY)**



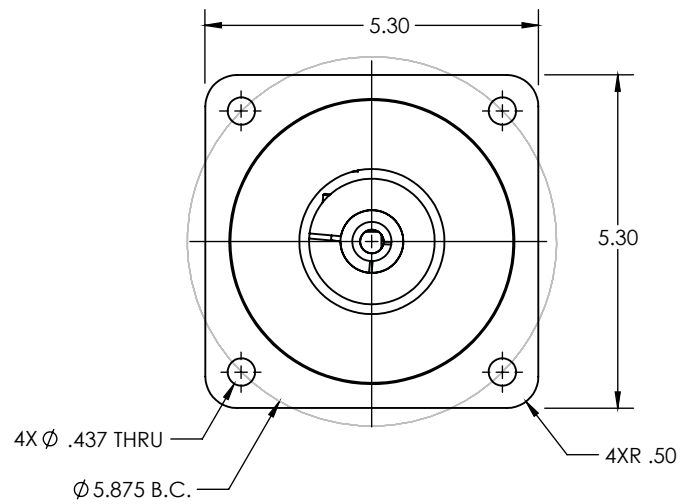
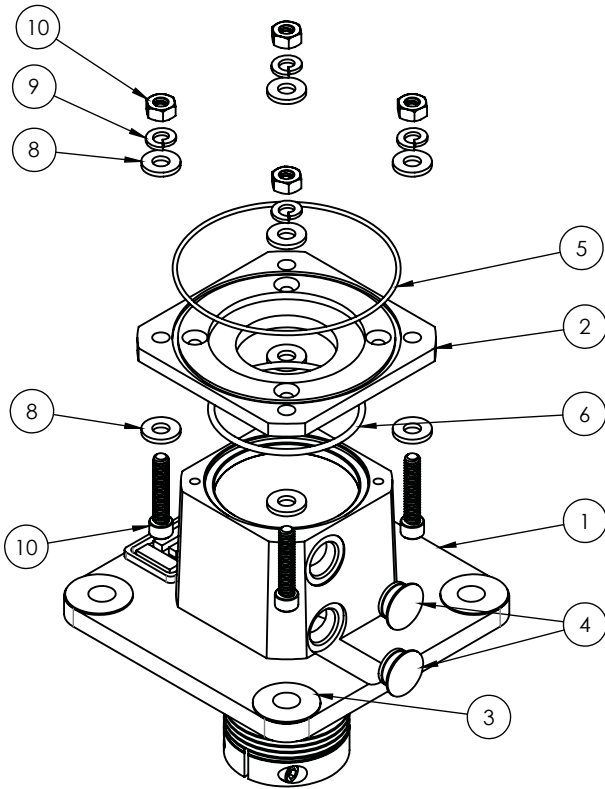
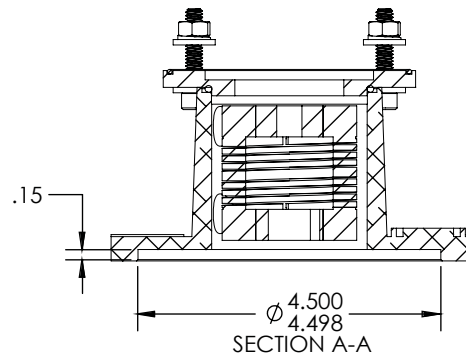
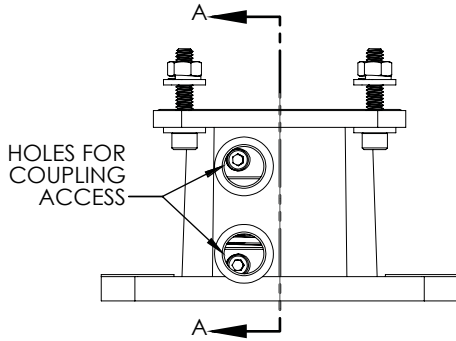
ITEM NO.	DESCRIPTION	PART NO.	QTY
1	NEMA ADAPTOR	38296-002	1
2	H25 INSULATING ADAPTOR	38297-001	1
3	COUPLING, INSULATED 3/8 X 5/8	39089-001	1
4	RUBBER PLUG	32028-001	2
5	O-RING	32010-141	1
6	HEX SOCKET HEAD SCREW	330CX-10321/2	7

P/N 11012-002 NEMA 56C ADAPTER AND HARDWARE FOR H25D ENCODER WITH 0.50 SHAFT EXTENSION (SOLD SEPARATELY)



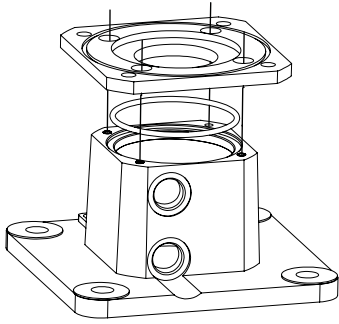
ITEM NO.	DESCRIPTION	PART NO.	QTY
1	NEMA ADAPTOR	38296-002	1
2	H25 INSULATING ADAPTOR	38297-001	1
3	COUPLING, INSULATED 3/8 X 5/8	39089-001	1
4	RUBBER PLUG	32028-001	2
5	O-RING	32010-141	1
6	HEX SOCKET HEAD SCREW	330CX-10321/2	4

P/N 11012-003 NEMA 56C ADAPTER AND HARDWARE FOR H38 ENCODER  
(SOLD SEPARATELY) SEE SHEET 2 OF 2 FOR ASSEMBLY PROCESS

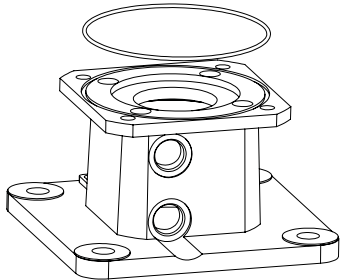


ITEM NO.	DESCRIPTION	PART NO.	QTY
1	NEMA 56 ADAPTOR	38296-002	1
2	H38 INSULATING ADAPTOR	38297-002	1
3	INSULATED 3/8 X 5/8 COUPLING	39089-001	1
4	RUBBER PLUG	32028-001	2
5	O-RING, 2-043	32010-043	1
6	O-RING, 2-141	32010-141	1
7	PHILIPS FLAT-HEAD SCREWS	330FP-10321/2	4
8	1/4" FLAT WASHER	MS15795-810	8
9	1/4" LOCK WASHER	MS35338-139	4
10	HEX NUT, 1/4-20	AN340C416	4
11	SOCKET CAP SCREW, 1/4-20X1-1/4	330CX-1/42011/4	4
12	SOCKET CAP SCREW, 1/4-20X1	330CX-1/4201	4

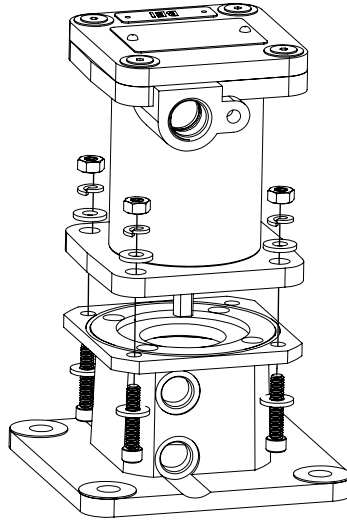
## NEMA 56C MOTOR ADAPTOR ASSEMBLY FOR H38



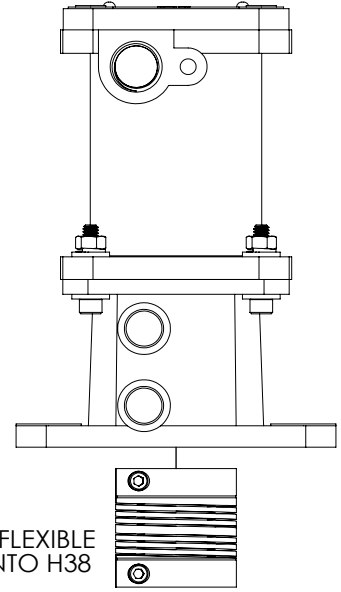
STEP 1: INSTALL SMALL O-RING AND H38 INSULATING ADAPTOR TO 56-C ADAPTER



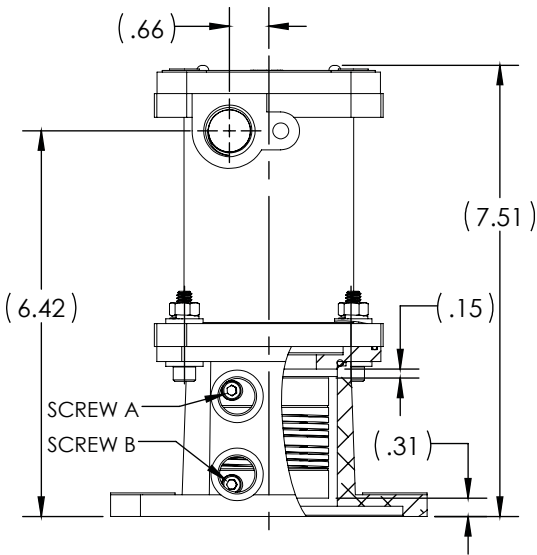
STEP 2: INSTALL LARGE O-RING INTO H38 PLATE GROOVE



STEP 3: INSTALL H38 ENCODER ONTO H38 PLATE AND SECURE WITH HARDWARE SUPPLIED

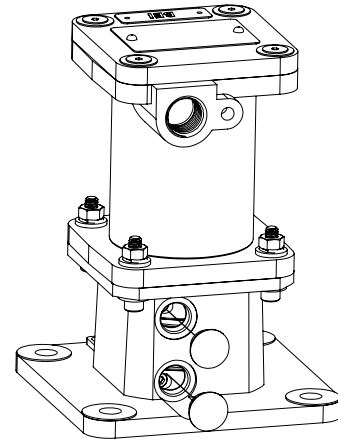


STEP 4: INSERT FLEXIBLE COUPLING ONTO H38 SHAFT.



STEP 5: ALIGN COUPLING AND TIGHTEN SCREW A FOR H38 SHAFT. ALLOW CLEARANCE AT EACH END.

STEP 6: LOCATE ASSEMBLY OVER MOTOR SHAFT AND HOUSING. SECURE 56C ADAPTER TO MOTOR HOUSING AND TIGHTEN MOTOR SHAFT COUPLING SCREW B.



STEP 7: INSTALL RUBBER PLUGS.

Sensata Technologies, Inc. ("Sensata") data sheets are solely intended to assist designers ("Buyers") who are developing systems that incorporate Sensata products (also referred to herein as "components"). Buyer understands and agrees that Buyer remains responsible for using its independent analysis, evaluation and judgment in designing Buyer's systems and products. Sensata data sheets have been created using standard laboratory conditions and engineering practices. Sensata has not conducted any testing other than that specifically described in the published documentation for a particular data sheet. Sensata may make corrections, enhancements, improvements and other changes to its data sheets or components without notice.

Buyers are authorized to use Sensata data sheets with the Sensata component(s) identified in each particular data sheet. HOWEVER, NO OTHER LICENSE, EXPRESS OR IMPLIED, BY ESTOPPEL OR OTHERWISE TO ANY OTHER SENSATA INTELLECTUAL PROPERTY RIGHT, AND NO LICENSE TO ANY THIRD PARTY TECHNOLOGY OR INTELLECTUAL PROPERTY RIGHT, IS GRANTED HEREIN. SENSATA DATA SHEETS ARE PROVIDED "AS IS". SENSATA MAKES NO WARRANTIES OR REPRESENTATIONS WITH REGARD TO THE DATA SHEETS OR USE OF THE DATA SHEETS, EXPRESS, IMPLIED OR STATUTORY, INCLUDING ACCURACY OR COMPLETENESS. SENSATA DISCLAIMS ANY WARRANTY OF TITLE AND ANY IMPLIED WARRANTIES OF MERCHANTABILITY, FITNESS FOR A PARTICULAR PURPOSE, QUIET ENJOYMENT, QUIET POSSESSION, AND NON-INFRINGEMENT OF ANY THIRD PARTY INTELLECTUAL PROPERTY RIGHTS WITH REGARD TO SENSATA DATA SHEETS OR USE THEREOF.

All products are sold subject to Sensata's terms and conditions of sale supplied at [www.sensata.com](http://www.sensata.com) SENSATA ASSUMES NO LIABILITY FOR APPLICATIONS ASSISTANCE OR THE DESIGN OF BUYERS' PRODUCTS. BUYER ACKNOWLEDGES AND AGREES THAT IT IS SOLELY RESPONSIBLE FOR COMPLIANCE WITH ALL LEGAL, REGULATORY AND SAFETY-RELATED REQUIREMENTS CONCERNING ITS PRODUCTS, AND ANY USE OF SENSATA COMPONENTS IN ITS APPLICATIONS, NOTWITHSTANDING ANY APPLICATIONS-RELATED INFORMATION OR SUPPORT THAT MAY BE PROVIDED BY SENSATA.

Mailing Address: Sensata Technologies, Inc., 529 Pleasant Street, Attleboro, MA 02703, USA.

### CONTACT US

#### Americas

+1 (800) 350 2727 – Option 1  
[sales.beisensors@sensata.com](mailto:sales.beisensors@sensata.com)  
**Europe, Middle East & Africa**  
 +33 (3) 88 20 8080  
[position-info.eu@sensata.com](mailto:position-info.eu@sensata.com)

#### Asia Pacific

[sales.isasia@list.sensata.com](mailto:sales.isasia@list.sensata.com)  
 China +86 (21) 2306 1500  
 Japan +81 (45) 277 7117  
 Korea +82 (31) 601 2004  
 India +91 (80) 67920890  
 Rest of Asia +886 (2) 27602006  
 ext 2808