

4

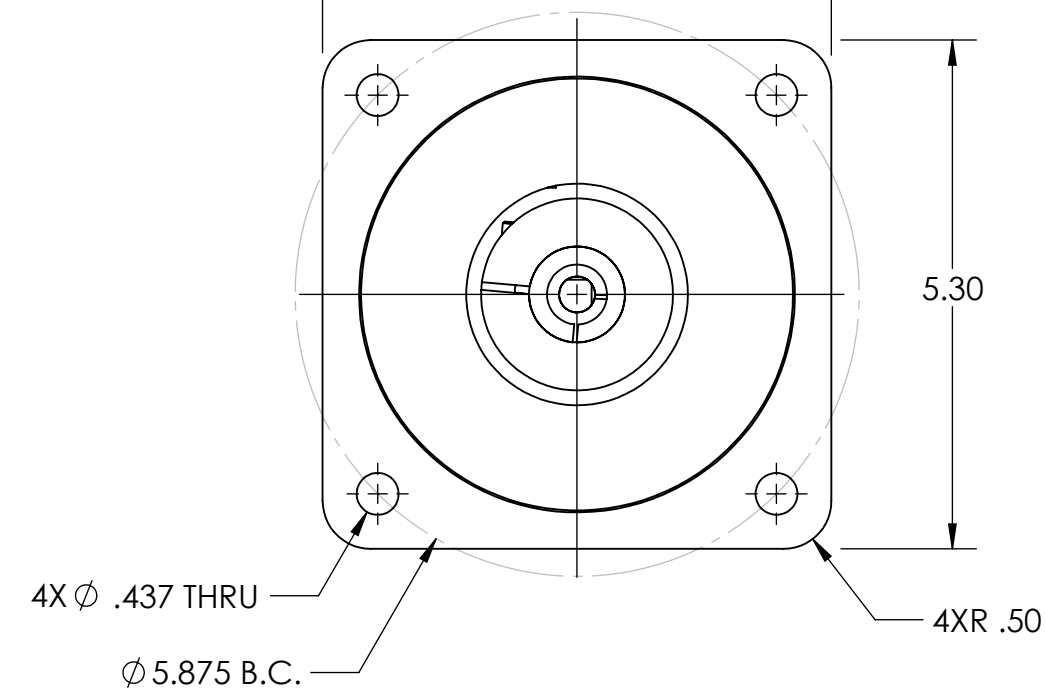
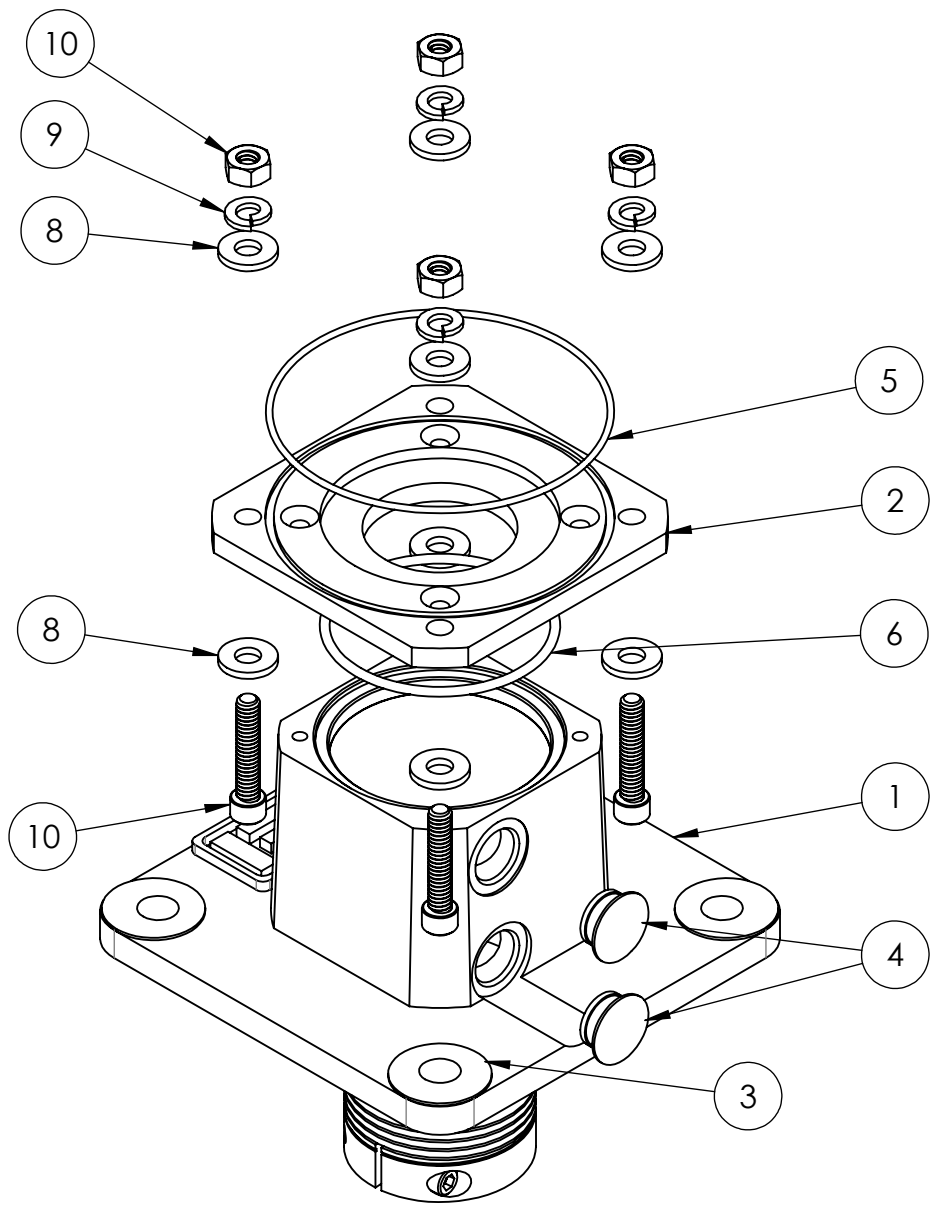
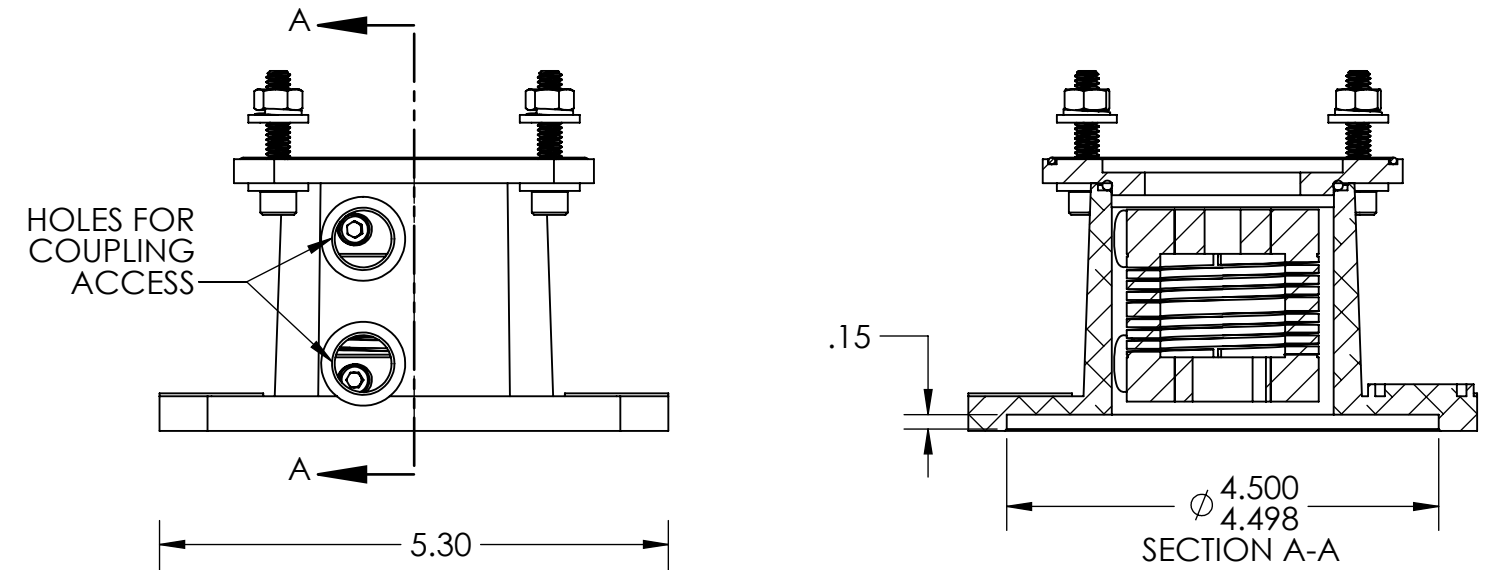
3

2

1

ITEM NO.	PART NO.	DESCRIPTION	QTY
1	38296-002	NEMA 56 ADAPTER	1
2	38297-002	H38 INSULATING ADAPTER	1
3	39089-001	INSULATED 3/8 X 5/8 COUPLING	1
4	32028-001	RUBBER PLUG	2
5	32010-043	O-RING, 2-043	1
6	32010-141	O-RING, 2-141	1
7	330FP-10321/2	PHILIPS FLAT-HEAD SCREWS	4
8	MS15795-810	1/4" FLAT WASHER	8
9	MS35338-139	1/4" LOCK WASHER	4
10	AN340C416	HEX NUT, 1/4-20	4
11	330CX-1/42011/4	SOCKET CAP SCREW, 1/4-20X1-1/4	4
12	330CX-1/4201	SOCKET CAP SCREW, 1/4-20X1	4

ZONE	REV.	REVISION DESCRIPTION	ECN NO.	DATE



P/N 11012-003
 NEMA 56C ADAPTER AND
 HARDWARE FOR H38 ENCODER
 (SOLD SEPARATELY)
 SEE SHEET 2 OF 2 FOR ASSEMBLY
 PROCESS

UNCONTROLLED COPY

FIRST ISSUE DATE: 04/24/19
 DRAWN: DRC
 APPROVED: MFB
 DATE: 04/24/19
 ECN:
 DATE:
 MATERIAL:

SENSATA TECHNOLOGIES PROPRIETARY AND CONFIDENTIAL. NEITHER THIS PRINT NOR THE INFORMATION CONTAINED HEREON IS TO BE USED AGAINST THE INTERESTS OF SENSATA TECHNOLOGIES OR AGAINST THE INTERESTS OF ANY OF ITS AFFILIATED COMPANIES OR WHOLLY OWNED SUBSIDIARIES.
 INTERPRET DIMENSIONING AND TOLERANCING PER ASME Y14.5-2009. UNLESS OTHERWISE SPECIFIED DIMENSIONS ARE IN INCHES [MILLIMETERS] AND ARE INTENDED AS NOMINAL SEE PRODUCT SPECIFICATIONS FOR MORE DETAILS.

DO NOT SCALE DRAWING
 THIRD ANGLE PROJECTION

BEI SENSORS
 1461 LAWRENCE DRIVE
 THOUSAND OAKS, CA 93120

TITLE
**NEMA 56C ADAPTER
 ASSEMBLY FOR H38**

SIZE	DWG NO.	REV.
B	09914-002	.
SCALE	SOLIDWORKS	SHEET
1:2		1 OF 2

4

3

2

1

DEVICE:

PROJECT:

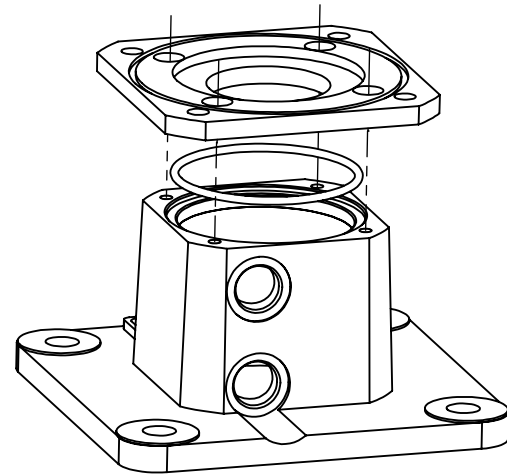
4

3

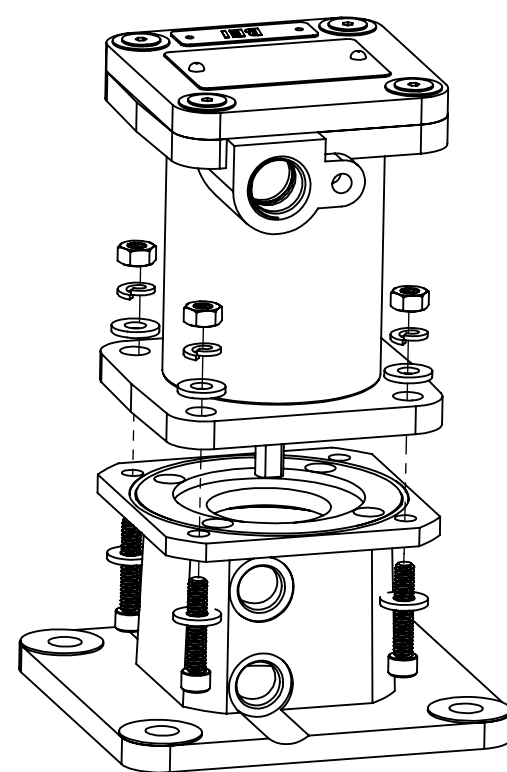
2

1

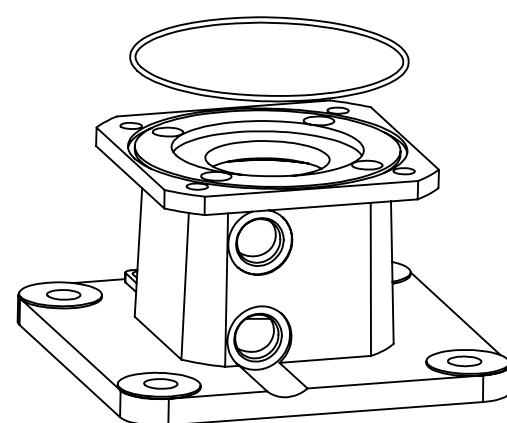
ZONE	REV.	REVISION DESCRIPTION	ECN NO.	DATE



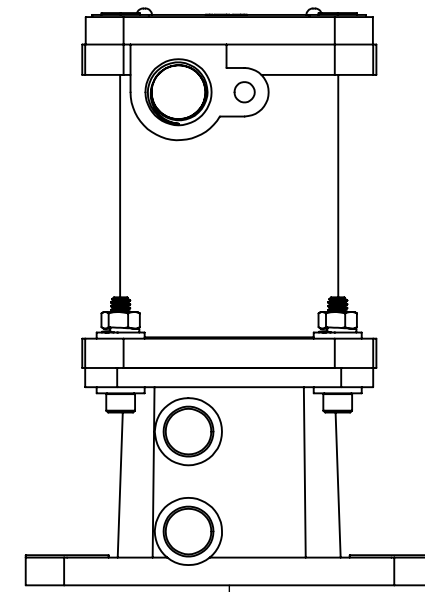
STEP 1: INSTALL SMALL O-RING AND H38 INSULATING ADAPTER TO 56-C ADAPTER



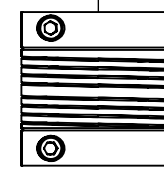
STEP 3: INSTALL H38 ENCODER ONTO H38 PLATE AND SECURE WITH HARDWARE SUPPLIED



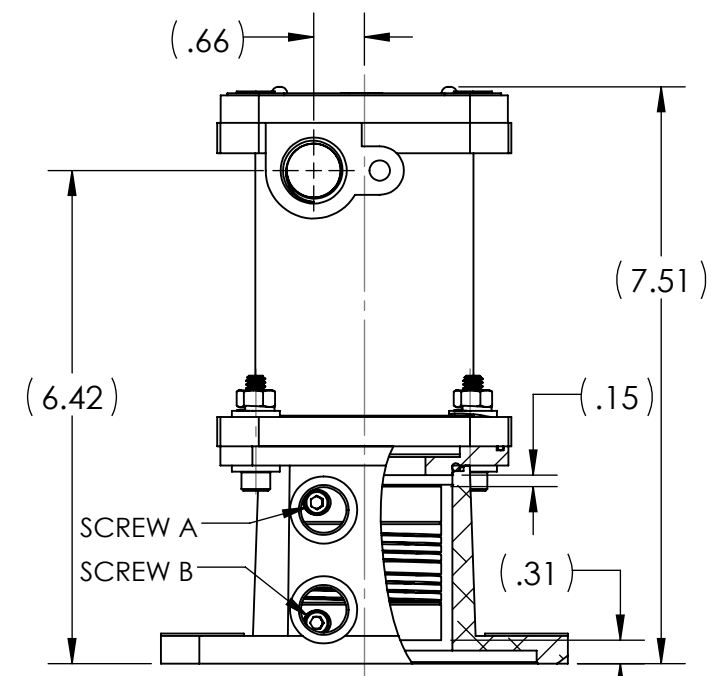
STEP 2: INSTALL LARGE O-RING INTO H38 PLATE GROOVE



STEP 4: INSERT FLEXIBLE COUPLING ONTO H38 SHAFT.

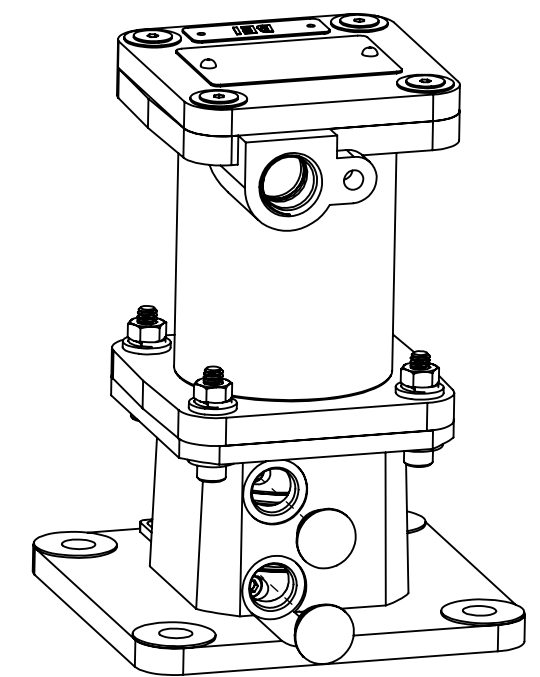


P/N 11012-003
ASSEMBLY PROCESS
(H38 SOLD SEPARATELY)



STEP 5: ALIGN COUPLING AND TIGHTEN SCREW A FOR H38 SHAFT. ALLOW CLEARANCE AT EACH END.

STEP 6: LOCATE ASSEMBLY OVER MOTOR SHAFT AND HOUSING. SECURE 56C ADAPTER TO MOTOR HOUSING AND TIGHTEN MOTOR SHAFT COUPLING SCREW B.



STEP 7: INSTALL RUBBER PLUGS.

UNCONTROLLED COPY

FIRST ISSUE DATE: 04/24/19
DRAWN: DRC
APPROVED: MFB
DATE: 04/24/19
ECN:
DATE:
MATERIAL:

SENSATA TECHNOLOGIES PROPRIETARY AND CONFIDENTIAL. NEITHER THIS PRINT NOR THE INFORMATION CONTAINED HEREON IS TO BE USED AGAINST THE INTERESTS OF SENSATA TECHNOLOGIES OR AGAINST THE INTERESTS OF ANY OF ITS AFFILIATED COMPANIES OR WHOLLY OWNED SUBSIDIARIES.

INTERPRET DIMENSIONING AND TOLERANCING PER ASME Y14.5-2009. UNLESS OTHERWISE SPECIFIED DIMENSIONS ARE IN INCHES [MILLIMETERS] AND ARE INTENDED AS NOMINAL SEE PRODUCT SPECIFICATIONS FOR MORE DETAILS.

DO NOT SCALE DRAWING
THIRD ANGLE PROJECTION

Sensata Technologies
BEI SENSORS
1461 LAWRENCE DRIVE
THOUSAND OAKS, CA 93120

TITLE
NEMA 56C MOTOR ADAPTER ASSEMBLY FOR H38

SIZE DWG NO. REV.
B 09914-002 .

SCALE 1:2.5 SOLIDWORKS SHEET 2 OF 2

4

3

2

1

DEVICE: PROJECT: