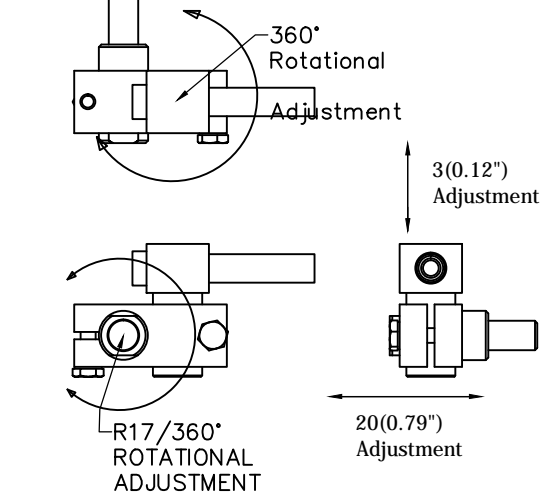
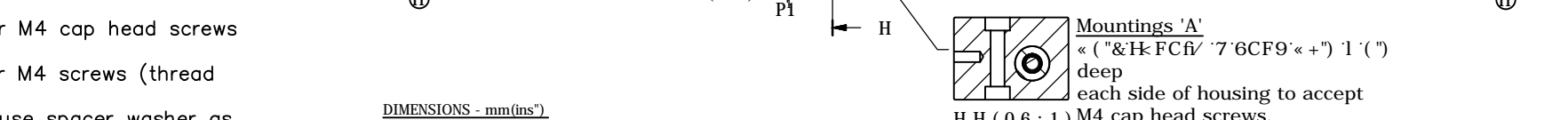
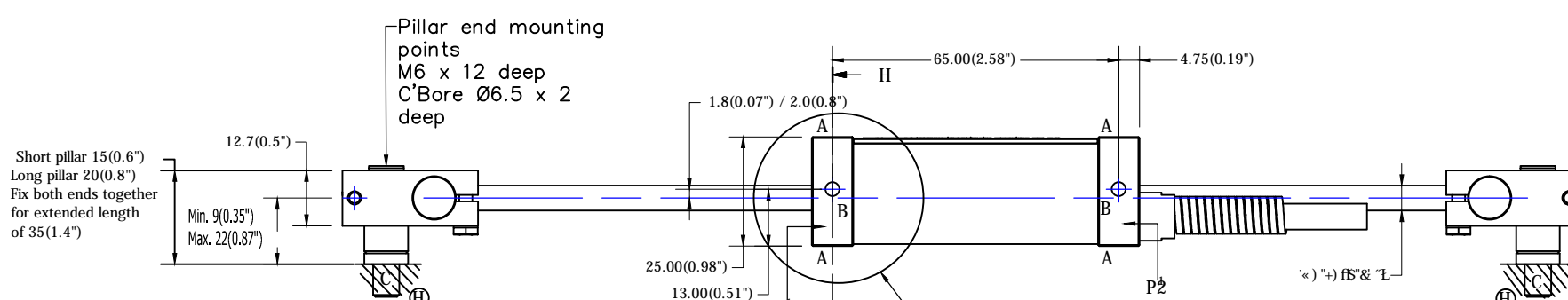
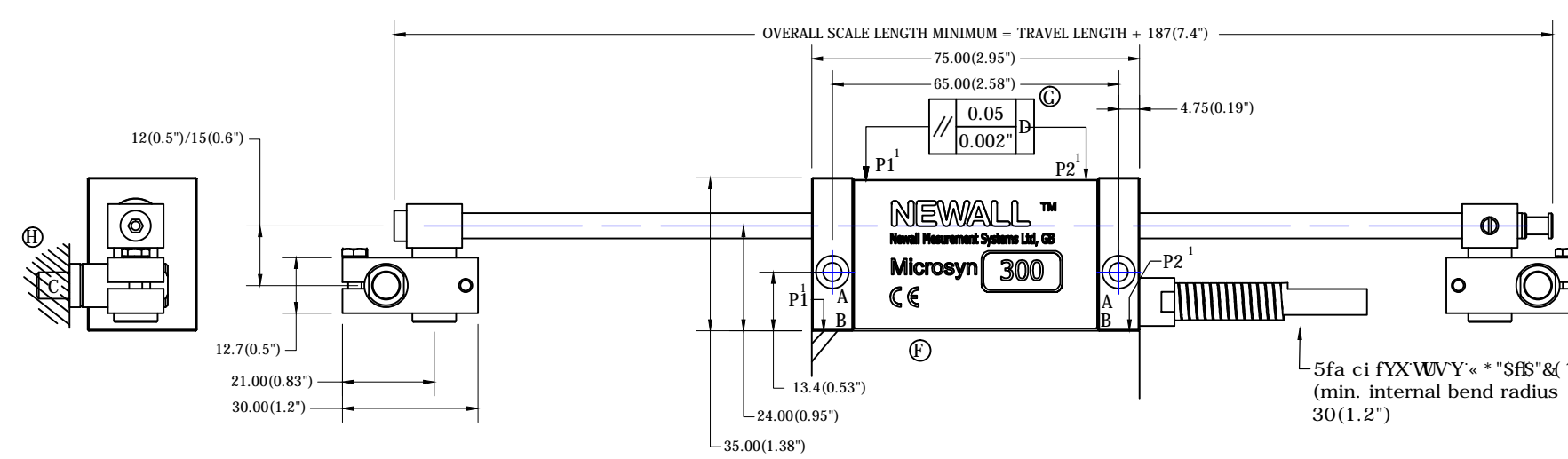
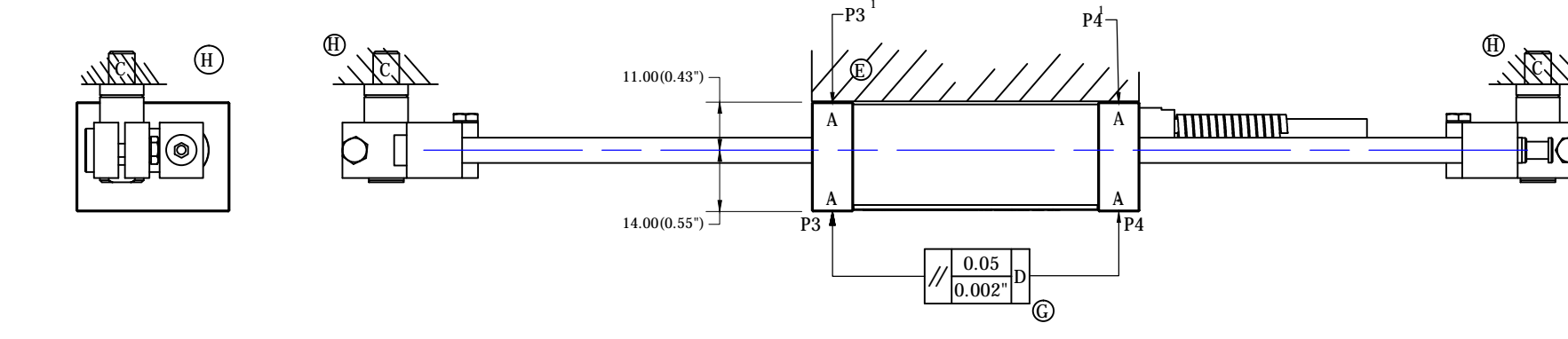


Optional Single End Scale Mounting Kit. Left and right hand versions available. Scale 0.6:1



SCALE MOUNTING BRACKET ADJUSTMENT Scale 0.8:1



- A - Encoder head mounting points 2off for M4 cap head screws (clearance holes through)
- B - Encoder head mounting points 2off for M4 screws (thread depth 8)
- C - Scale pillar mounting studs M6 x 10 (use spacer washer as required)
- D - Machine Guideway
- E/F - Encoder head mounting faces
- G - Indicating parallel alignment required between encoder head and axis travel
- H - Scale end mounting points to machine bed
- P - Installation alignment points

DIMENSIONS - mm(INS)
FOR FURTHER INFORMATION REFER TO INSTALLATION MANUAL

REV. ISS. DATE C.N.No. ALTERATION				REV. ISS. DATE C.N.No. ALTERATION				TITLE DIMENSIONAL DETAILS for M300 Encoders		MATERIAL/ FINISH		SCALE 1=1		UNLESS OTHERWISE STATED : - TOLERANCES: - 0 DECIMAL PLACES ±0.5 1 DECIMAL PLACE ±0.2 2 DECIMAL PLACES ±0.1 ANGULAR ±1'	
REV. ISS. DATE C.N.No. ALTERATION				REV. ISS. DATE C.N.No. ALTERATION				DRAWN C.WHITMORE 10-04-17		CHECKED		SHEET 1 OF 1		DRAWING NUMBER 316-87935 REV. ISS. 0	
1				2				3		4		5		6	



THIS DRAWING IS THE PROPERTY OF NEWALL MEASUREMENT SYSTEMS LIMITED. THE INFORMATION THEREIN MAY NOT BE COPIED OR USED WITHOUT WRITTEN PERMISSION