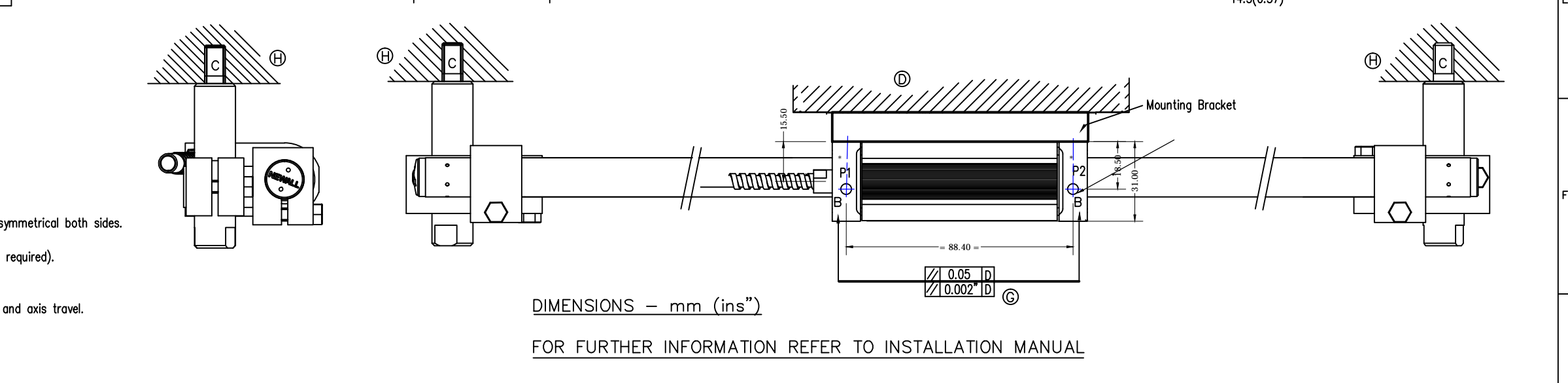


**Notes**

- A - Encoder head mounting points 4off, 2off M5x8 deep holes symmetrical both sides.
- B - Encoder head mounting points 2off for M5x6 deep holes.
- C - Scale pillar mounting studs M8 x 15 (use spacer washer as required).
- D - Machine Guideway.
- E/F - Encoder head mounting faces.
- G - Indicating parallel alignment required between encoder head and axis travel.
- H - Scale end mounting points to machine bed.
- P - Installation alignment points.



REV. ISS. DATE C.N.No. ALTERATION			REV. ISS. DATE C.N.No. ALTERATION			REV. ISS. DATE C.N.No. ALTERATION			REV. ISS. DATE C.N.No. ALTERATION		
TITLE: DIMENSIONAL DETAILS for S300 ENCODERS						MATERIAL/ FINISH			SCALE: 1=1		
DRAWN: C.WHITMORE 10-04-17						CHECKED			UNLESS OTHERWISE STATED :- DIMENSIONS ARE IN MM.		
APPROVED						Leicester NEWALL England			TOLERANCES: - 0 DECIMAL PLACES ±0.5 1 DECIMAL PLACE ±0.2 2 DECIMAL PLACES ±0.1 ANGULAR ±1°		
SHEET 1 OF 1						DRAWING NUMBER 316-87930			REV. ISS. 0		