

PHD Programmable Hall Device

BEI Sensors



Product Features

- For use on programmable BEI Hall Effect Sensor Series 9360, 8360 and 9960
- Sensors can be programmed after installation into an assembly reducing errors from mechanical tolerances
- Multi-point programming increases sensor accuracy
- Ability to program binary/switch output
- Independent programming of outputs in dual output sensors
- Program electrical angle anywhere within the mechanical rotation of the sensor
- Set high and low clipping points on output
- Create, name and store program routines for later use
- Ability to reprogram sensor or lock the sensor to prevent accidental reprogramming
- Real-time verification of programmed output

BEI Sensors introduces the Programmable Hall Device (PHD), an easy way to take control of customizing BEI Hall effect sensor output. This compact system interfaces with your PC to BEI Hall effect sensors and provides users with the ability to create output functions that meet specific requirements. The system includes proprietary PHD software (compatible with Windows XP, 7 or Vista), the PHD programming unit, power cord and a USB computer interface cable. Cables to interface the PHD to specific sensor connectors are sold separately. A positions fixture is recommended if the sensors are not programmed after installation in the final assembly

After installing the PHD software, connect the PHD programmer to the sensor and PC and you're ready to program. The PHD software makes programming simple by providing users an easy to understand screen where programming routines can be created, stored and recalled for later use. The PHD software also offers a real-time graphical representation of the sensor output allowing verification of the sensor's functionality after programming. The PHD can be used to program both the analog and PWM output versions of BEI programmable Hall effect sensors. BEI Sensors can also work with you to provide adaptations to the PHD system that you may need.

Ordering Information

PHD System Part Number: PHD

Product Specifications

Box Dimensions: 6.30 x 4.92 x 2.03"

Power Requirements: 120V AC

PHD Package includes: PHD programming box, AC adapter, North American power cord, USB computer interface cable, USB flash drive(contains PHD programming software, user manual, and data sheet).

System Requirements

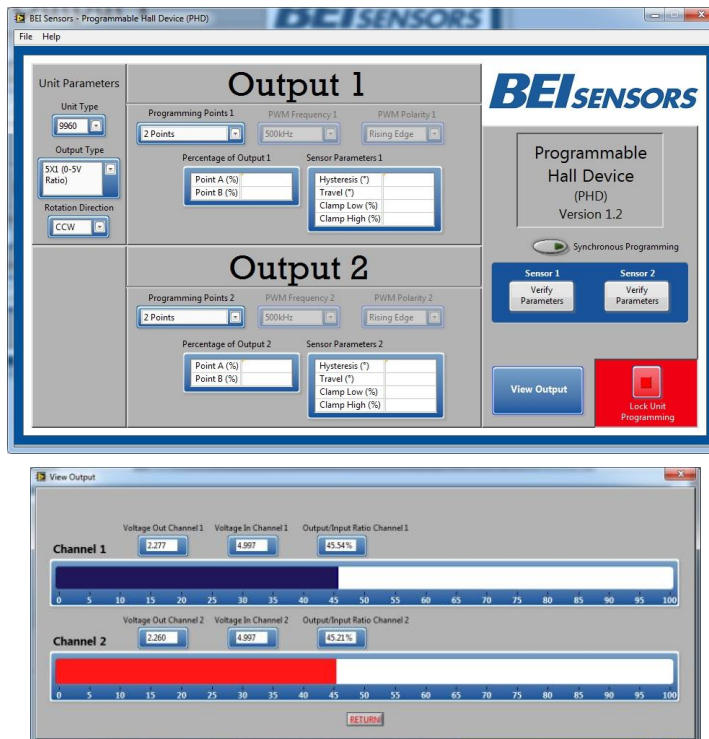
Operating System: XP, Vista, or Windows 7 (32 or 64 bit)

Computer Memory: 512 MB

Screen Resolution: 1024x768 pixels

AC Power 120/240 VAC, 50/60 Hz

Program Interface

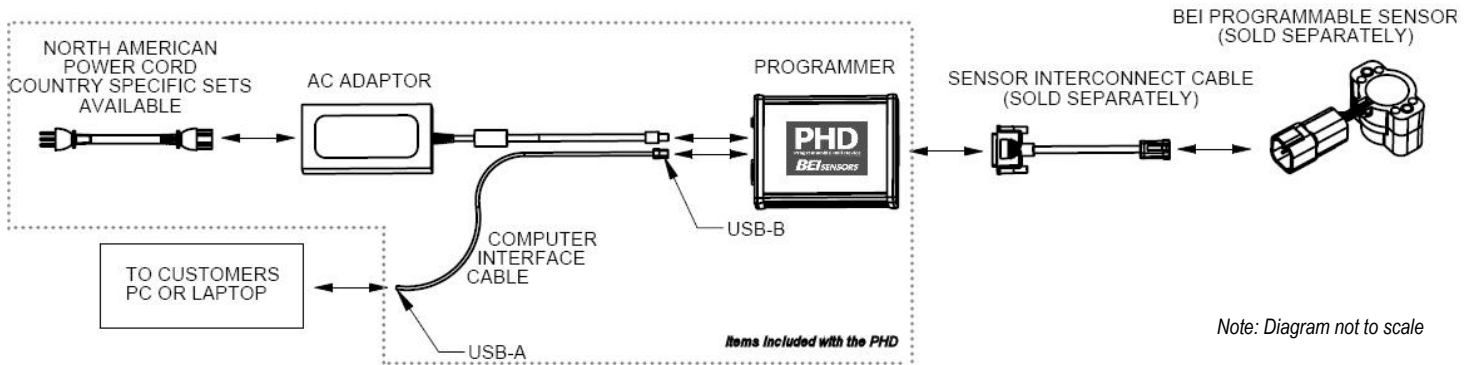


Home Screen

View Output
Screen

System Set Up

For complete hardware and software set up and use, see the PHD User Guide (BEI Specification number 02135)



Cable Accessories

BEI Hall Effect Sensor to PHD Sensor Interconnect Cables		
BEI programmable sensor	Sensor Termination	Sensor To PHD Interconnect Cable BEI Part Number
9960	Flying leads, single output (SL)	14-PHD-88-1
9960	Flying leads, dual output (DL)	14-PHD-88-1
9960	Tyco Amp, single output (SA)	14-PHD-88-5
9960	Tyco Amp, dual output (DA)	14-PHD-88-4
9960	Deutsch, single output (SD)	14-PHD-88-8
9960	Deutsch, dual output (DD)	14-PHD-88-7
9960	Metripack, single output (SM)	14-PHD-88-3
9960	Metripack, dual output (DM)	14-PHD-88-2
9960	Weatherpack, single output (SW)	14-PHD-88-6
8360	Tyco Amp, dual output	14-PHD-88-9
9360	Metripack, dual output	14-PHD-88-2

Country Specific Power Cords		
Country	Plug Type	BEI Part Number
Belgium, Denmark, Finland, France, Germany, Greece, Korea, Netherlands, Russia, Spain	CEE7/7	14-252-88-001
Brazil	NBR 14136	14-252-88-008
China	CPCS-CCC	14-252-88-004
India	IA6A3 (aka IS 1293 and BS546)	14-252-88-005
Israel	SI-32	14-525-88-002
Italy	CEI 23-16	14-252-88-003
Swiss	ASEV 1011	14-252-88-007
Hong Kong, Singapore, UK	BS1363	14-252-88-006