

PRESSURE SENSORS IN HYDRAULIC PRESSES

Background

Hydraulic presses use a hydraulic cylinder to generate large mechanical forces. Utilizing Pascal's law, in which pressure applied to a confined fluid occurs throughout the fluid, hydraulic presses apply a moderate mechanical force to a small cross-sectional area, which is transferred to a larger cross-sectional area in the hydraulic cylinder. This allows for the hydraulic cylinder to generate a greater pressure to the application than what was applied.

Hydraulic presses are used in many manufacturing operations and take up less space than mechanical presses.

Commonly, they are used in blanking, punching, forging and deep drawing applications.

In these applications, precise movement of the cylinder is important with pressure, typically exceeding 200 bar (3000 psi). Too little pressure will create defective parts and too much pressure could also lead to defective parts along with tool wear and increased machine downtime.

Utilizing high quality sensors can help to minimize poor part quality and prolong tool life.


Solution

To best control the cylinder position, typically one pressure sensor is used on either side of the hydraulic cylinder. These sensors should be equipped to handle high pressures and pressure spikes, along with being accurate and repeatable with long cycle life. Utilizing high quality sensors can help to minimize poor part quality and prolong tool life.

Sensata Technologies, a world leader in pressure sensors, has developed the PTE7100 offering for use in hydraulic applications, including hydraulic presses. The PTE7100 features a hermetic pressure port design with multiple connectors and process port options, $\pm 0.25\%$ BFSL accuracy and operating media temperatures of -40°C to 125°C . The PTE7100 also features a snubber option to help dampen extreme pressure spikes and has a guaranteed cycle life of $\geq 10\text{M}$ cycles with positive testing of the technology to a half billion cycles.

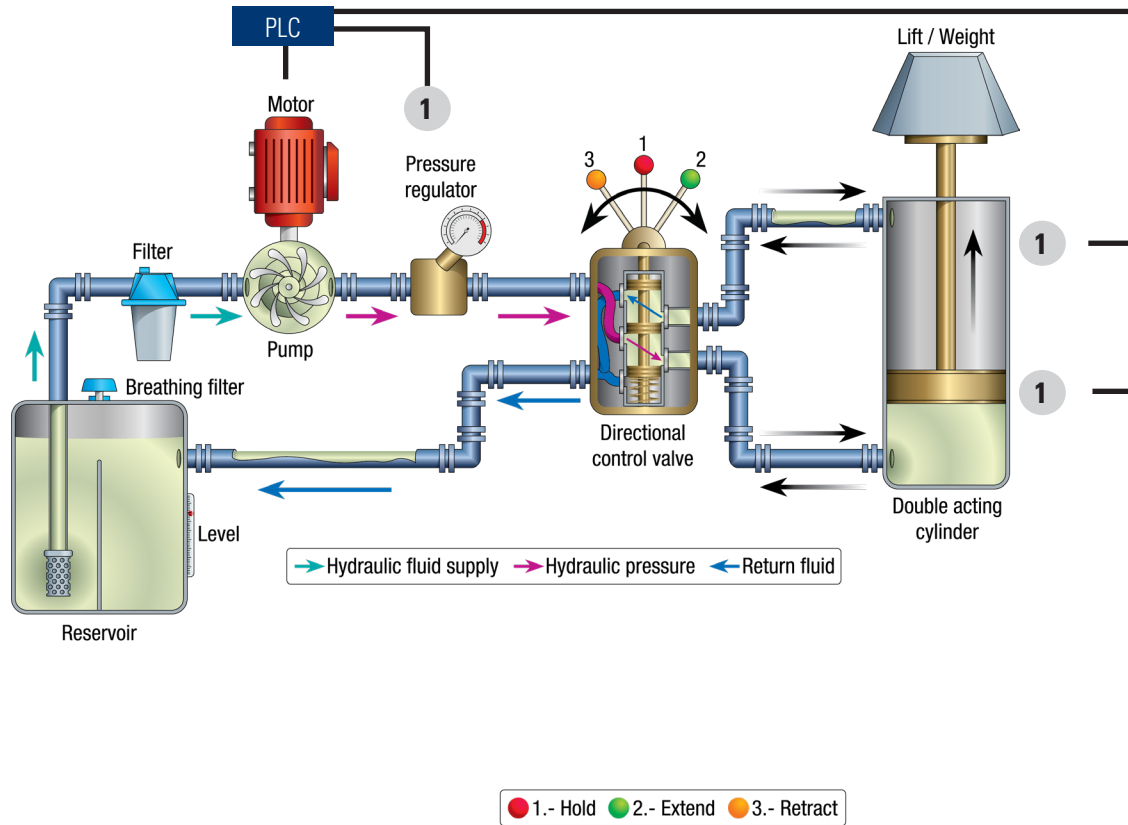


RECOMMENDED PRODUCTS

Reference on Diagram	Product	Features	Function	Brand
1	 PTE7100	<ul style="list-style-type: none"> Operating pressure range: 0-50 bar to 0-600 bar (0-725psi to 0-8700 psi) ±0.25% BFSL accuracy High shock (500g) and vibration (30g) Multiple connector and port options High burst pressures (≥10X for full scale pressure ≤400 bar) 	Monitor hydraulic cylinder pressure	Sensata Technologies



FLUID POWER SYSTEM



Sensata Technologies, Inc. ("Sensata") data sheets are solely intended to assist designers ("Buyers") who are developing systems that incorporate Sensata products (also referred to herein as "components"). Buyer understands and agrees that Buyer remains responsible for using its independent analysis, evaluation and judgment in designing Buyer's systems and products. Sensata data sheets have been created using standard laboratory conditions and engineering practices. Sensata has not conducted any testing other than that specifically described in the published documentation for a particular data sheet. Sensata may make corrections, enhancements, improvements and other changes to its data sheets or components without notice.

Buyers are authorized to use Sensata data sheets with the Sensata component(s) identified in each particular data sheet. HOWEVER, NO OTHER LICENSE, EXPRESS OR IMPLIED, BY ESTOPPEL OR OTHERWISE TO ANY OTHER SENSATA INTELLECTUAL PROPERTY RIGHT, AND NO LICENSE TO ANY THIRD PARTY TECHNOLOGY OR INTELLECTUAL PROPERTY RIGHT, IS GRANTED HEREIN. SENSATA DATA SHEETS ARE PROVIDED "AS IS". SENSATA MAKES NO WARRANTIES OR REPRESENTATIONS WITH REGARD TO THE DATA SHEETS OR USE OF THE DATA SHEETS, EXPRESS, IMPLIED OR STATUTORY, INCLUDING ACCURACY OR COMPLETENESS. SENSATA DISCLAIMS ANY WARRANTY OF TITLE AND ANY IMPLIED WARRANTIES OF MERCHANTABILITY, FITNESS FOR A PARTICULAR PURPOSE, QUIET ENJOYMENT, QUIET POSSESSION, AND NON-INFRINGEMENT OF ANY THIRD PARTY INTELLECTUAL PROPERTY RIGHTS WITH REGARD TO SENSATA DATA SHEETS OR USE THEREOF.

All products are sold subject to Sensata's terms and conditions of sale supplied at www.sensata.com SENSATA ASSUMES NO LIABILITY FOR APPLICATIONS ASSISTANCE OR THE DESIGN OF BUYERS' PRODUCTS. BUYER ACKNOWLEDGES AND AGREES THAT IT IS SOLELY RESPONSIBLE FOR COMPLIANCE WITH ALL LEGAL, REGULATORY AND SAFETY-RELATED REQUIREMENTS CONCERNING ITS PRODUCTS, AND ANY USE OF SENSATA COMPONENTS IN ITS APPLICATIONS, NOTWITHSTANDING ANY APPLICATIONS-RELATED INFORMATION OR SUPPORT THAT MAY BE PROVIDED BY SENSATA.

Mailing Address: Sensata Technologies, Inc., 529 Pleasant Street, Attleboro, MA 02703, USA.

CONTACT US

Americas

+1 (800) 350 2727
 sensors@sensata.com
 switches@sensata.com

Europe, Middle East & Africa

+359 (2) 809 1826
 pressure-info.eu@sensata.com

Asia Pacific

sales.isasia@list.sensata.com
 China +86 (21) 2306 1500
 Japan +81 (45) 277 7117
 Korea +82 (31) 601 2004
 India +91 (80) 67920890
 Rest of Asia +886 (2) 27602006
 ext 2808