

ADDING PRESSURE SENSORS TO WATER DISTRIBUTION NETWORKS

Background

One of the largest challenges that water distribution networks and water utilities face is “non-revenue water” or the loss of water throughout their network that no one pays for. These losses include real losses from leaks in pipes, joints, and fittings along with apparent losses from metering inaccuracies and unauthorized consumption. This accounts for 30-50% of the water input into the distribution networks.

As the world transitions to become smarter and more connected, water utilities are looking for innovative ways to combat this issue and cut down on non-revenue water.

Solution

Applying pressure sensors at nodes throughout the water distribution network is a practical and cost effective approach to mapping an area’s water network. Once mapped utilities would be able to detect and target areas of unexpected water loss. Hydrants and commercial and residential water meters are typical nodes to which utilities are looking to incorporate pressure sensors.



Sensata Technologies, a world leader in pressure sensors, has developed the PTE7300 offering low power digital I²C electrical output in a module or a fully hermetic package. The module is intended for customers that would like to have lower costs and more design flexibility while the fully hermetic sensor is rated to IP69K ingress protection featuring a 5-pin M12 connector with gold pins and glass to metal hermetic seal inside the connector. Both packages are drinking water safe compatible.

Applying pressure sensors at nodes throughout the water distribution network is a practical and cost effective approach to mapping an area’s water network.



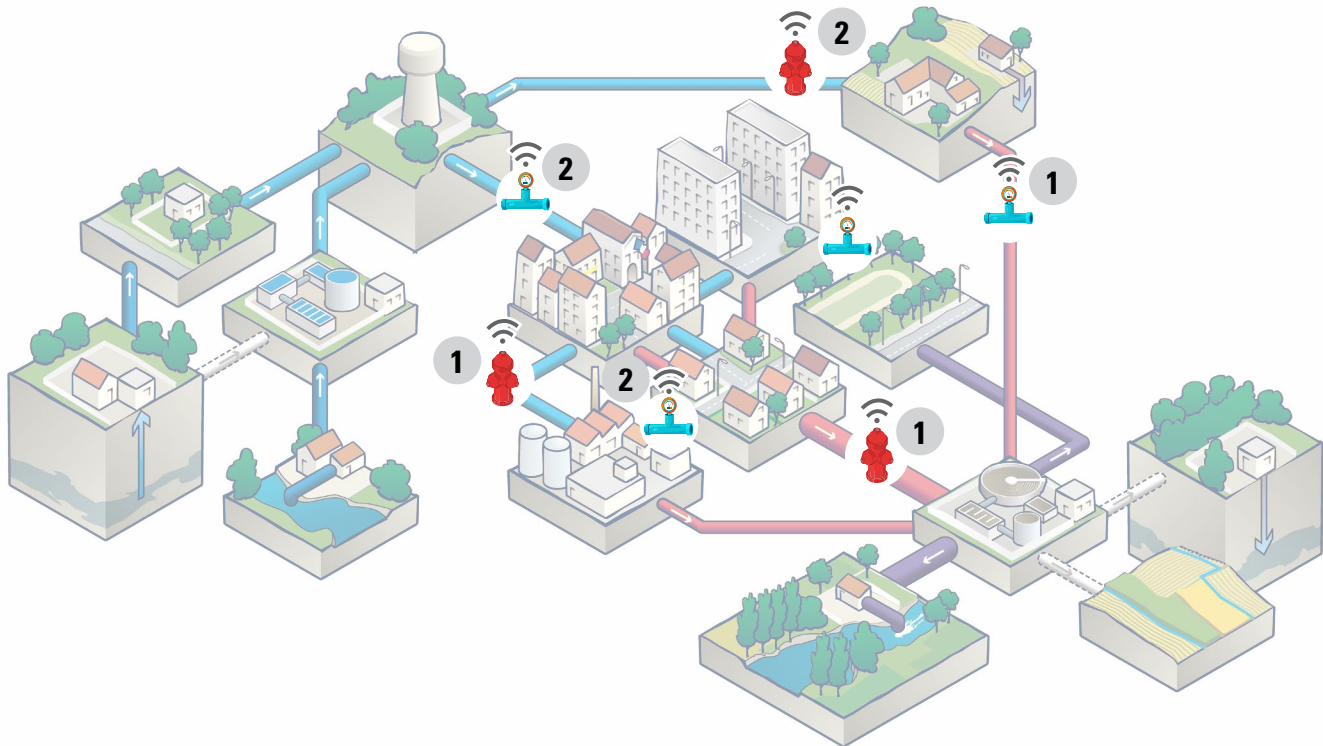


RECOMMENDED PRODUCTS

Reference on Diagram	Product	Features	Function	Brand
1	 PTE7300 Full Sensor	<ul style="list-style-type: none"> Operating pressure range: 0-16 bar to 0-400 bar (0-232psi to 0-5800 psi) Low power consumption Plug and play I²C electrical communication Fully hermetic IP69K Glass to metal seal M12 connector with gold pins 	Monitor water distribution network pressure	Sensata Technologies
2	 PTE7300 Module	<ul style="list-style-type: none"> Operating pressure range: 0-16 bar to 0-400 bar (0-232psi to 0-5800 psi) Low power consumption Plug and play I²C electrical communication PCB with pins for easy and flexible integration 	Monitor water distribution network pressure	Sensata Technologies



WATER NETWORK



Sensata Technologies, Inc. ("Sensata") data sheets are solely intended to assist designers ("Buyers") who are developing systems that incorporate Sensata products (also referred to herein as "components"). Buyer understands and agrees that Buyer remains responsible for using its independent analysis, evaluation and judgment in designing Buyer's systems and products. Sensata data sheets have been created using standard laboratory conditions and engineering practices. Sensata has not conducted any testing other than that specifically described in the published documentation for a particular data sheet. Sensata may make corrections, enhancements, improvements and other changes to its data sheets or components without notice.

Buyers are authorized to use Sensata data sheets with the Sensata component(s) identified in each particular data sheet. HOWEVER, NO OTHER LICENSE, EXPRESS OR IMPLIED, BY ESTOPPEL OR OTHERWISE TO ANY OTHER SENSATA INTELLECTUAL PROPERTY RIGHT, AND NO LICENSE TO ANY THIRD PARTY TECHNOLOGY OR INTELLECTUAL PROPERTY RIGHT, IS GRANTED HEREIN. SENSATA DATA SHEETS ARE PROVIDED "AS IS". SENSATA MAKES NO WARRANTIES OR REPRESENTATIONS WITH REGARD TO THE DATA SHEETS OR USE OF THE DATA SHEETS, EXPRESS, IMPLIED OR STATUTORY, INCLUDING ACCURACY OR COMPLETENESS. SENSATA DISCLAIMS ANY WARRANTY OF TITLE AND ANY IMPLIED WARRANTIES OF MERCHANTABILITY, FITNESS FOR A PARTICULAR PURPOSE, QUIET ENJOYMENT, QUIET POSSESSION, AND NON-INFRINGEMENT OF ANY THIRD PARTY INTELLECTUAL PROPERTY RIGHTS WITH REGARD TO SENSATA DATA SHEETS OR USE THEREOF.

All products are sold subject to Sensata's terms and conditions of sale supplied at www.sensata.com SENSATA ASSUMES NO LIABILITY FOR APPLICATIONS ASSISTANCE OR THE DESIGN OF BUYERS' PRODUCTS. BUYER ACKNOWLEDGES AND AGREES THAT IT IS SOLELY RESPONSIBLE FOR COMPLIANCE WITH ALL LEGAL, REGULATORY AND SAFETY-RELATED REQUIREMENTS CONCERNING ITS PRODUCTS, AND ANY USE OF SENSATA COMPONENTS IN ITS APPLICATIONS, NOTWITHSTANDING ANY APPLICATIONS-RELATED INFORMATION OR SUPPORT THAT MAY BE PROVIDED BY SENSATA.

Mailing Address: Sensata Technologies, Inc., 529 Pleasant Street, Attleboro, MA 02703, USA.

CONTACT US

Americas

+1 (800) 350 2727
 sensors@sensata.com
 switches@sensata.com

Europe, Middle East & Africa

+359 (2) 809 1826
 pressure-info.eu@sensata.com

Asia Pacific

sales.isasia@list.sensata.com
 China +86 (21) 2306 1500
 Japan +81 (45) 277 7117
 Korea +82 (31) 601 2004
 India +91 (80) 67920890
 Rest of Asia +886 (2) 27602006
 ext 2808