



| PS NECK MOUNTING SERIES (PSM-XX-N)

2 TO 35 AMP PRECISION THERMAL CIRCUIT BREAKER

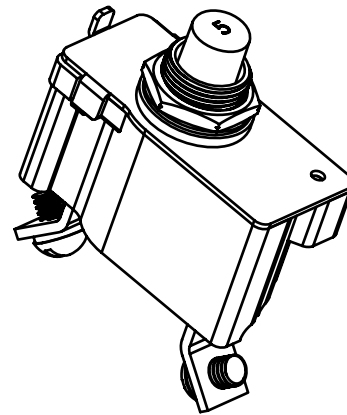
Introduction

The KLIXON® PSM-XX-N series of breakers are designed to interrupt short circuits or overloads and combines trip-free protection with fast response time. The PSM-XX-N series thermal breaker is ideal for commercial and military vehicle equipment where precise ultimate trip characteristics are required.



Features

- 30VDC, 2 to 35 Amps
- Manual reset neck mount circuit breaker



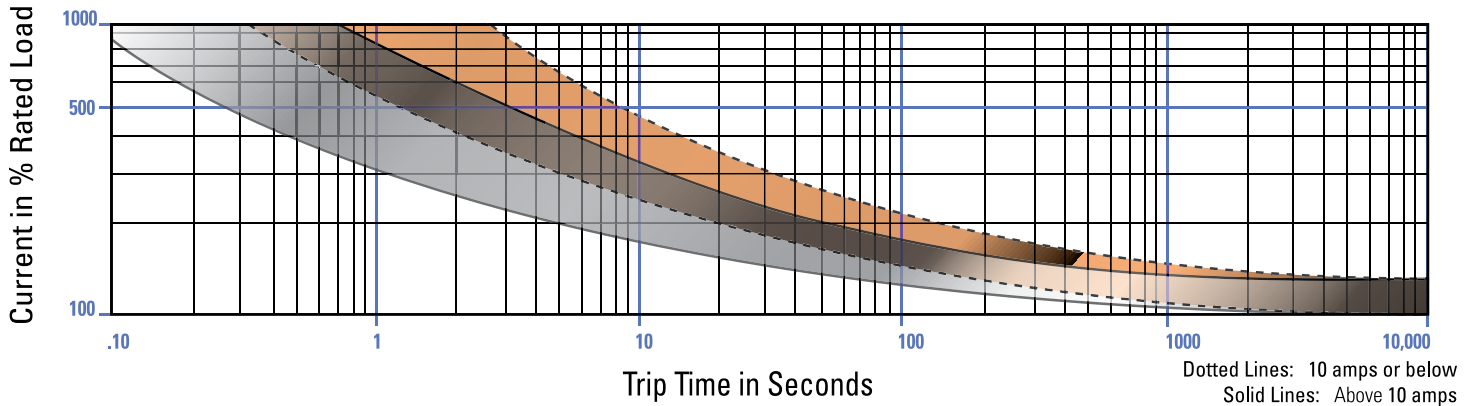
SPECIFICATIONS

Calibration : 200% rated current, 77°F (25°C)	2 to 10 amps : 20 to 150 seconds 12.5 to 35 amps : 8 to 50 seconds
Ultimate Trip At 77°F (25°C)	Must hold 100%, Must trip 138%
Endurance	Per SAE J553, 500 cycles @ 200%
Interrupt Current Capacity	Per SAE J553
Vibration	10G MIL-STD-202 Method 204, Condition A
Mechanical Shock	MIL-STD-202, Method 213, Condition C, 100G
Dielectric Strength	MIL-STD-202, Method 301, 1500VAC min
Insulation Resistance	MIL-STD 202, Method 302, Condition B, 100 MΩ min
Weight (with mounting nuts)	PSM-N : 35 grams max



TRIP CURVE

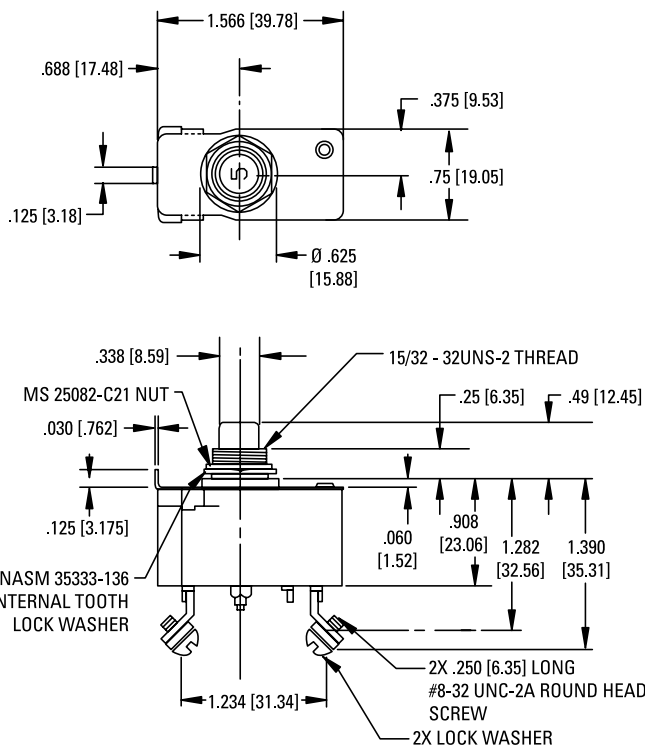
Approximate Time, Current Characteristics At 77°F (25°C)



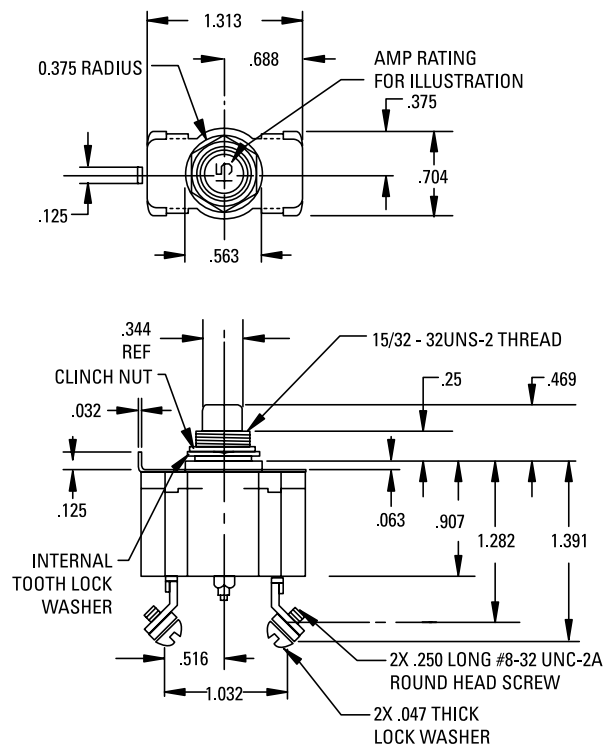
DIMENSIONS

All dimensions are in inches [mm]

PSM-XX-N (10 AMPS AND LESS)



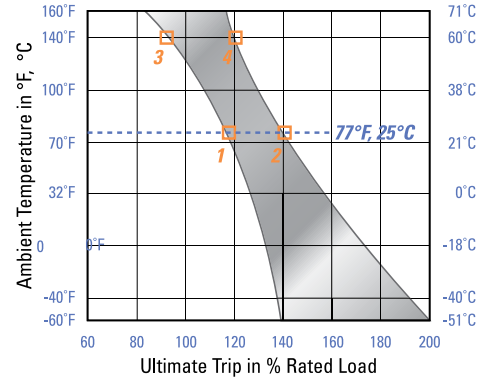
PSM-XX-N (OVER 10 AMPS)





DERATING CURVE

Performance characteristics are based on room temperature (77°F, 25°C). Consult Derating curve for ambient temperatures significantly higher or lower than standard room temperature. Example: At 77°F (25°C) the device is calibrated to hold at 110% of rated current (1) and trip at 138% of rated current (2). At 140°F (60°C), the same device will hold at approximately 92% of rated current (3), and trip at approximately 120% of rated current (4).



ORDERING OPTIONS

Example : PSM-35-N

Configuration	PSM	35	N
PSM: Manual			
Amp Rating			
2	8	20	
3	10	25	
4	12.5	30	
5	15	35	
6	17.5		
Neck Mount			
N: neck mount			