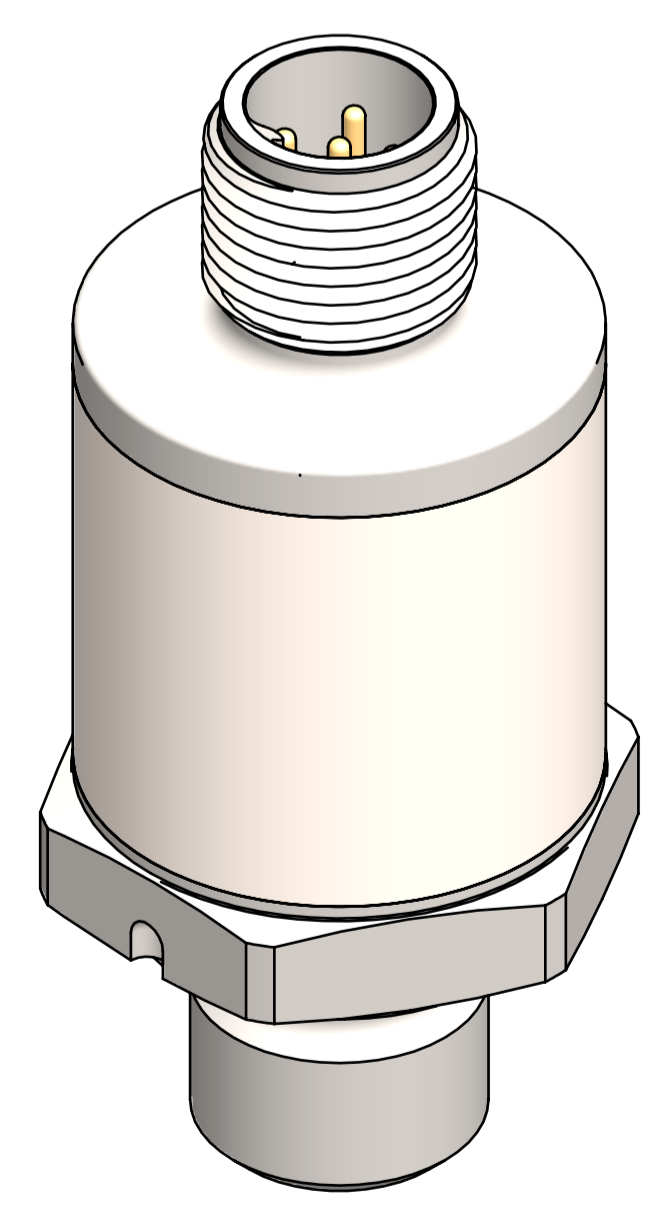
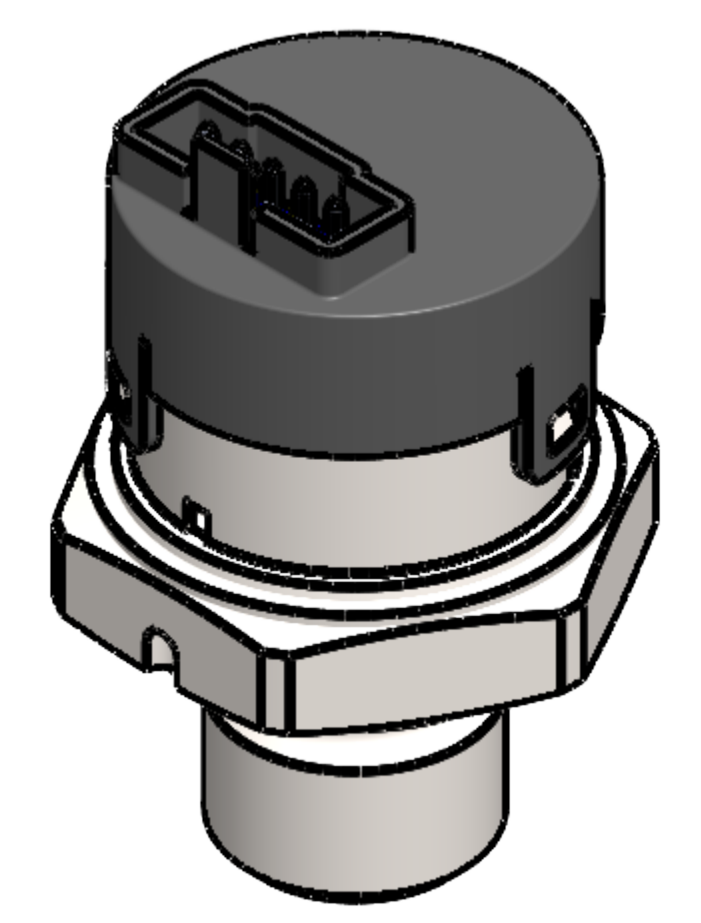


PART NO. DESIGNATION
PTE7300 - 11 A M - 1 B 400 B N .810 A

- | | |
|----------------------------------------------|----------------------------------------------|
| SENSATA INTERNAL CODE | MOQ |
| PRESSURE PORT | A.....MOQ500pcs |
| G1/4A DIN 3852-EA | B.....MOQ50pcs |
| 1/4-19 PT (1/4-19 BSPT),(R1/4).....B | SNUBBER |
| 7/16-20 UNF SAE J1926-2.....C | N.....NONE SNUBBER |
| 1/4-18 NPTD | S.....SNUBBER WITH ϕ 0.5mm DAMPING HOLE |
| ELECTRICAL CONNECTOR
(DETAILS SEE PAGE 2) | PRESSURE TYPE |
| M12 5-PIN GLASS-TO-METAL-SEAL.....M | S.....SEALED GAUGE, WITH GTMS PACKAGE |
| 5X1 2mm PITCH PIN HEADER (MODULE)..N | B.....GAUGE, WITH MODULE PACAKGE |
| EXTERNAL SEAL RING | PRESSURE RANGE |
| NONE.....0 | 016.....0...16bar |
| FKM (VITON) SEAL RING.....1 | 050.....0...50bar |
| ONLY FOR PRESSURE PORT OPTION A | 060.....0...60bar |
| HNBR SEAL RING.....2 | 100.....0...100bar |
| ONLY FOR PRESSURE PORT OPTION C | 160.....0...160bar |
| OUTPUT/INPUT | 200.....0...200bar |
| I2C (CRC PROTECTED) / 3.3...5VDC.....B | 250.....0...250bar |
| | 350.....0...350bar |
| | 400.....0...400bar |
| | 500.....0...500bar* |
| | 600.....0...600bar* |
- (*FOR GTMS PACKAGE ONLY)*



**GLASS-TO-METAL-SEAL PACKAGE
MODEL SHOWN**



**OEM MODULE
MODEL SHOWN**

from 0 to ...	bar	16	50	60	100	160	200	250	350	400	500*	600*	...
Proof pressure	bar	50	200	200	200	500	500	500	800	800	1200	1200	...
Burst pressure	bar	100	2000	2000	2000	2500	2500	2500	4000	4000	4000	4000	...
*Pressure range limitation		For sealed gauge (GTMS sensor fully hermetic) only											

Electrical	
Operating supply voltage	3.3VDC to 5VDC
Operating current in sleep mode	6.5uA (Typical)
Operating current in active mode	3.7mA (Typical, 4mA max.)
Device address	0xDA for I2C with CRC, 0xC for I2C without CRC
Probe configurations	Continuous
Digital output resolution	15-bit @ Default setting
Digital output at zero pressure	-16000
Digital output at FS pressure	+16000
Response time	< 1ms @ Default setting and active mode

Temperature	
Operating	-40°C to +100°C
Medium	-40°C to +125°C
Storage	-40°C to +125°C

Accuracy	
Basic Accuracy*	± 0.5% FS @ 25°C
BFSL Accuracy*	± 0.25% FS @ 25°C
Non-linearity*	± 0.2% FS
Non-repeatability	± 0.1% FS
Total error band	± 1.5% FS @ -20°C to 85°C

*Basic Accuracy	Including non-linearity, hysteresis, zero and span error (corresponds to measured error per IEC 61298-2).
*Accuracy spec	Including non-linearity, hysteresis and non-repeatability, excluding zero and span error (corresponds to the smart options per IEC 60770-1, the instrument is equipped with facilities for offset and span adjustment).
*Non-linearity spec	BFSL (best-fit-straight-line) according to IEC 61298-2

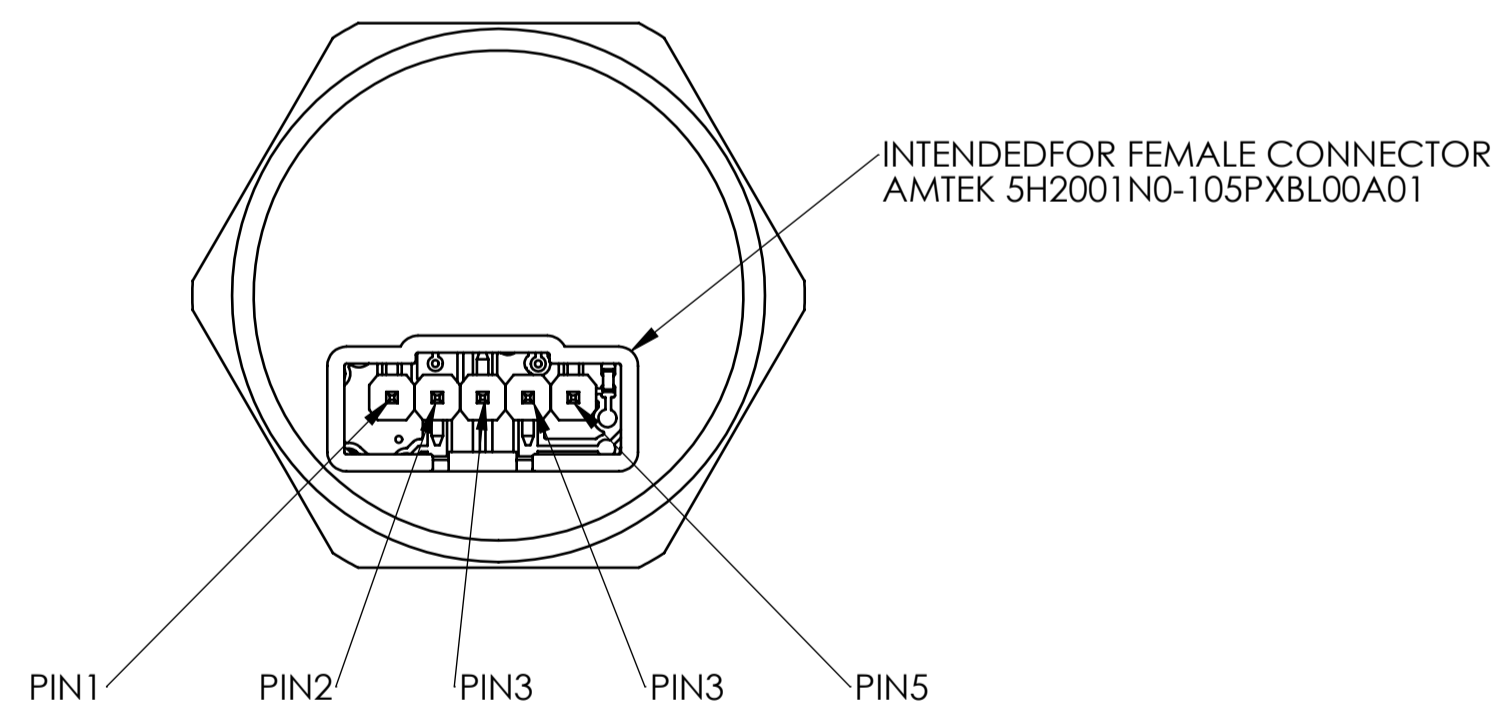
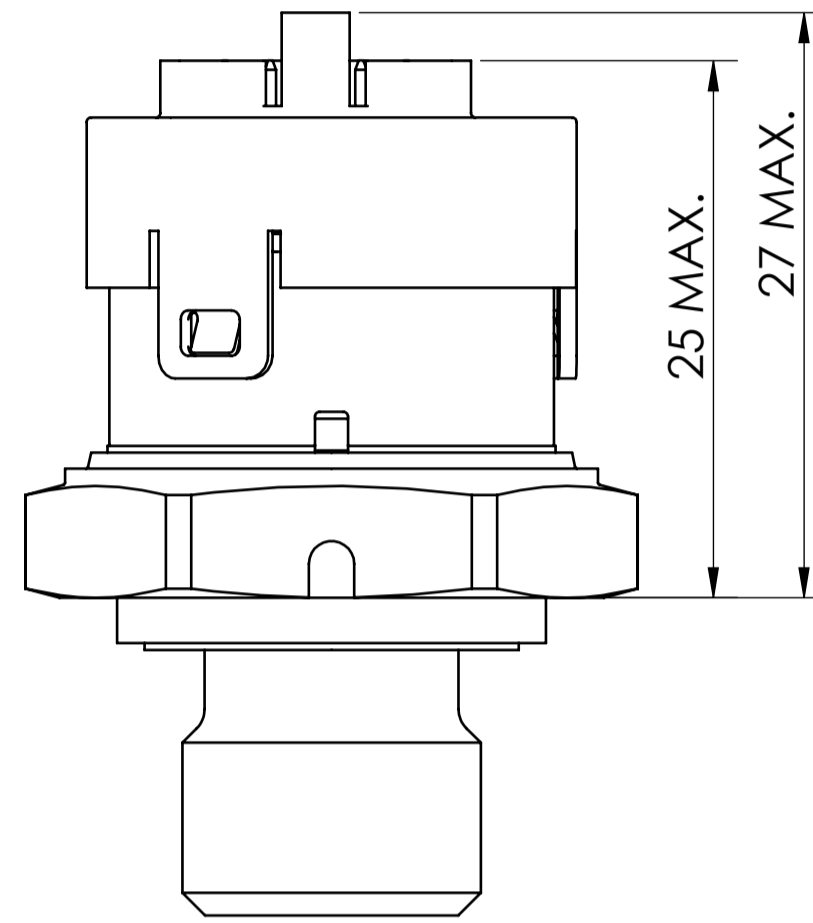
Conformity	
RoHS & REACH	YES
CE	according to EMC Directive 2014/30/EU, EN 61326 Emission and Immunity (industrial locations)
Vibration resistance	20g (sine) min. according to IEC 60068-2-6
Shock resistance	50g min. according to IEC 60068-2-27
Durability	> 10 X 10 ⁶ cycles 0...100%FS @25°C
Ingress protection per IEC 60 529	IP69K for GTMS fully assembly sensor with qualified counter connector
Media compatibility	All class II fluid and gases compatible with port material stainless steel 17-4PH (1.4542)

ALL RIGHT RESERVED		NEITHER THIS PRINT NOR THE INFORMATION CONTAINED HEREON IS TO BE USED AGAINST THE INTERESTS OF SENSATA TECHNOLOGIES OR AGAINST THE INTERESTS OF ANY OF ITS AFFILIATED COMPANIES OR WHOLLY OWNED SUBSIDIARIES.				18 CHUANGXIN ROAD XINBEI DISTRICT CHANGZHOU CHINA	
DRAWN	A. LIU	INTERPRET DIMENSIONING AND TOLERANCING PER ASME Y14.5-2009, UNLESS OTHERWISE SPECIFIED DIMENSIONS ARE IN MILLIMETERS.		TITLE			
DATE	18-JUN-2020	TOLERANCES		PRESSURE TRANSDUCER			
ENGINEER	W. XU	LINEAR		ANGULAR		SIZE	
DATE	18-JUN-2020					NUMBER	
APPROVED	CX. HU					PTE7300-TAB-ENV	
DATE	18-JUN-2020					REV	
APPROVED		DO NOT SCALE DRAWING		METHOD		B	
DATE				FIRST ANGLE PROJECTION		SCALE	
						2:1	
						SHEET	
						1 OF 3	

BUILT IN ELECTRICAL CONNECTOR OPTIONS

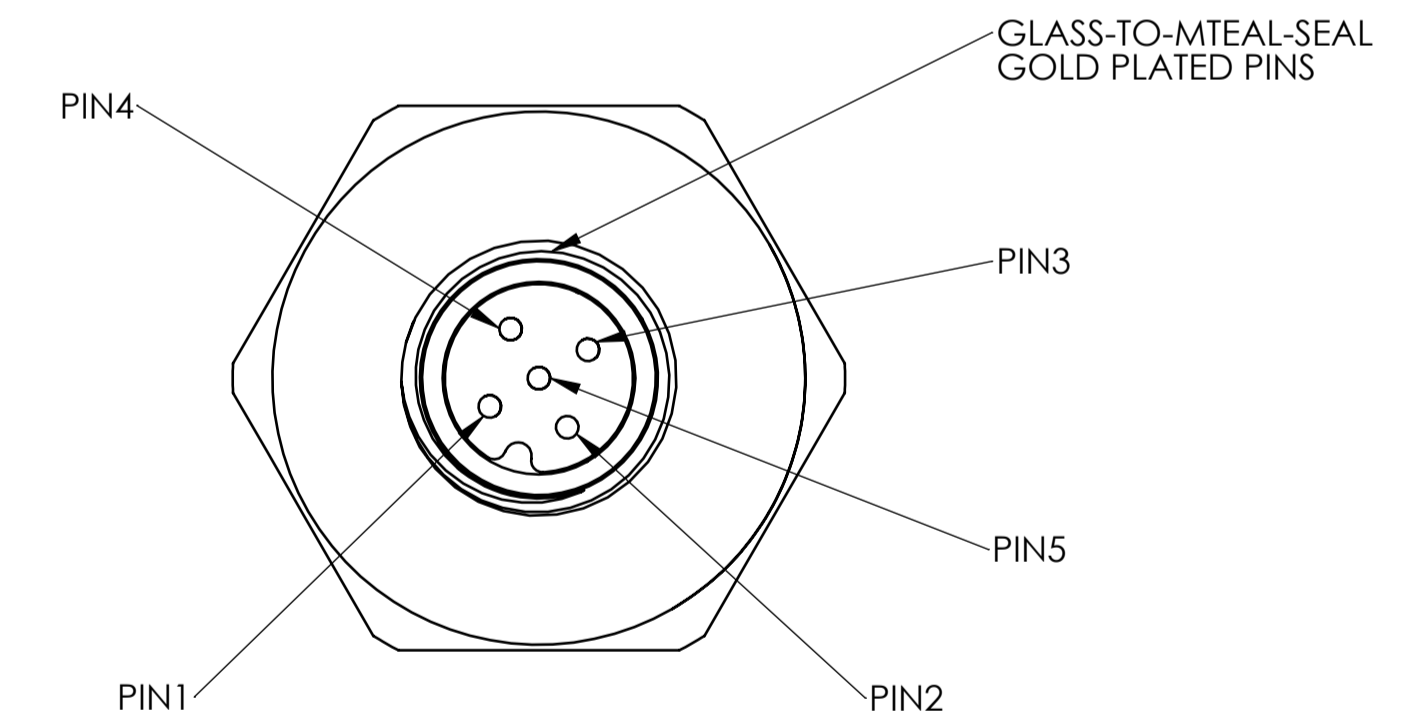
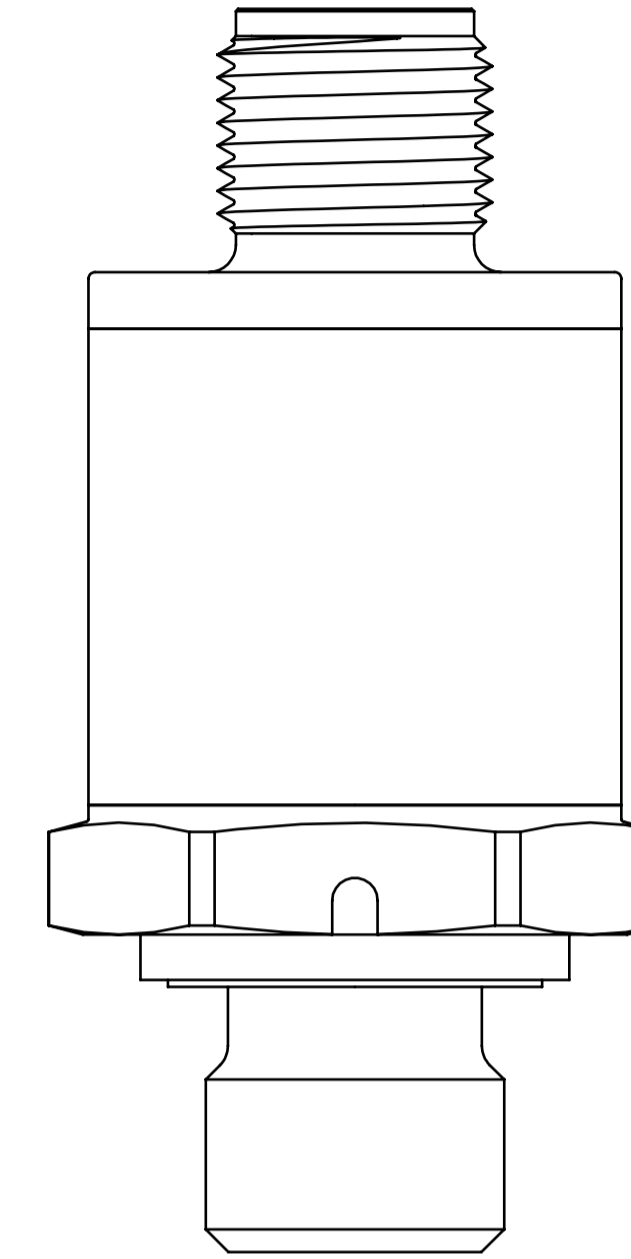
(PRESSURE PORT G1/4A DIN 3852-E SHOWN)

OEM MODULE MODEL SHOWN



PIN NUMBER	PIN1	PIN2	PIN3	PIN4	PIN5
DESCRIPTION	NC	V+	V-	SDA	SDC

GLASS-TO-METAL-SEAL PACKAGE MODEL SHOWN

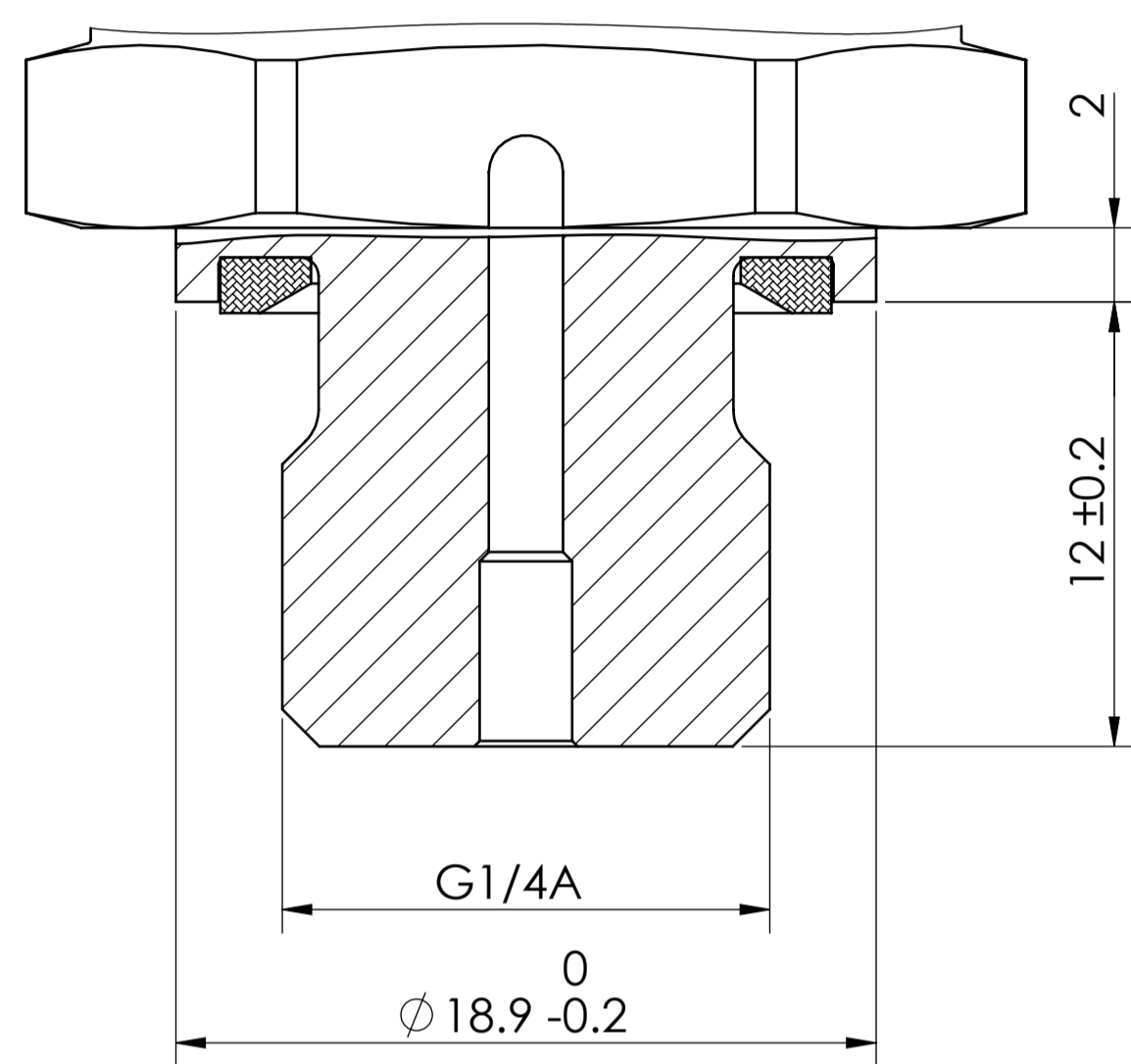


PIN NUMBER	PIN1	PIN2	PIN3	PIN4	PIN5
DESCRIPTION	NC	V+	V-	SDA	SDC

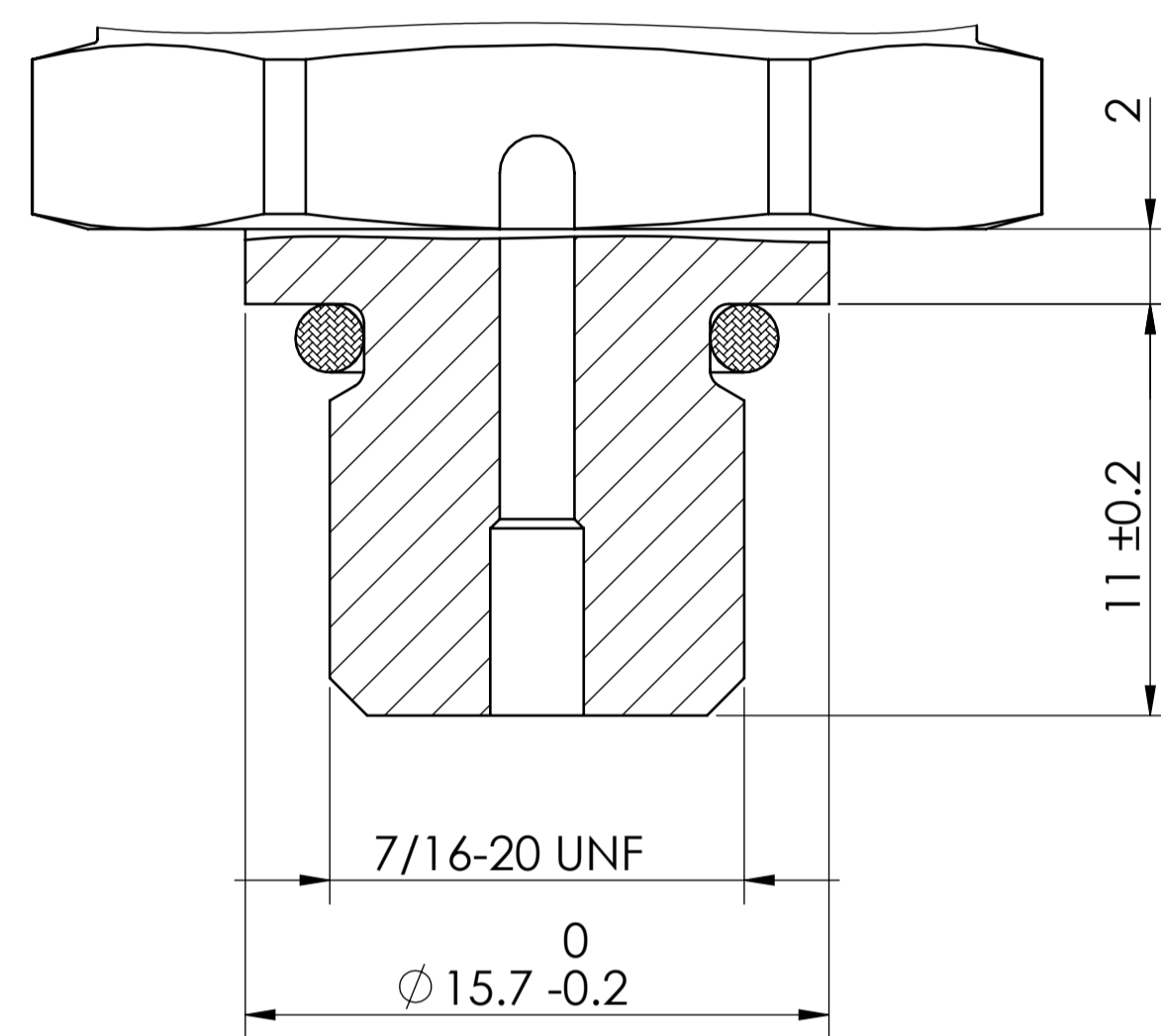
NOTE:
 V+: Supply Voltage V-: Ground
 SDA: I2C Digital Data Pin SDC: I2C Digital Clock Pin
 NC: Not Connected

PRESSURE CONNECTION PORT OPTIONS

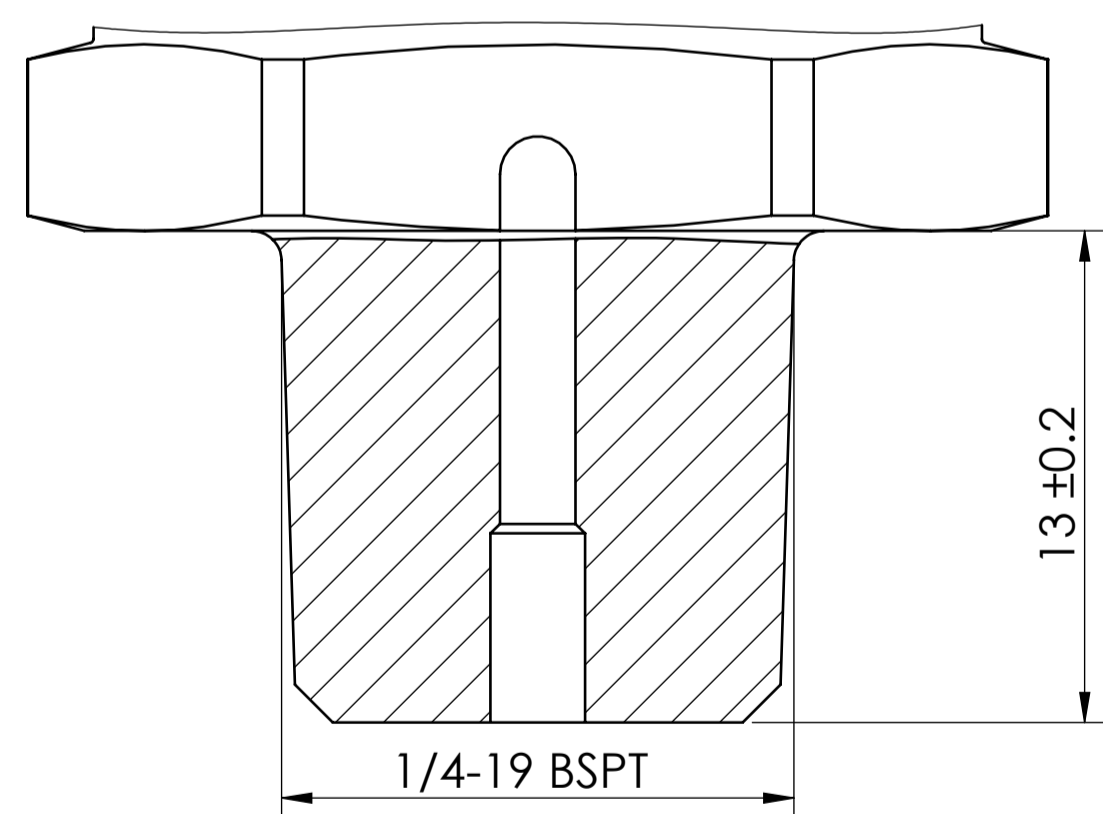
G1/4A (MALE) DIN 3852-E



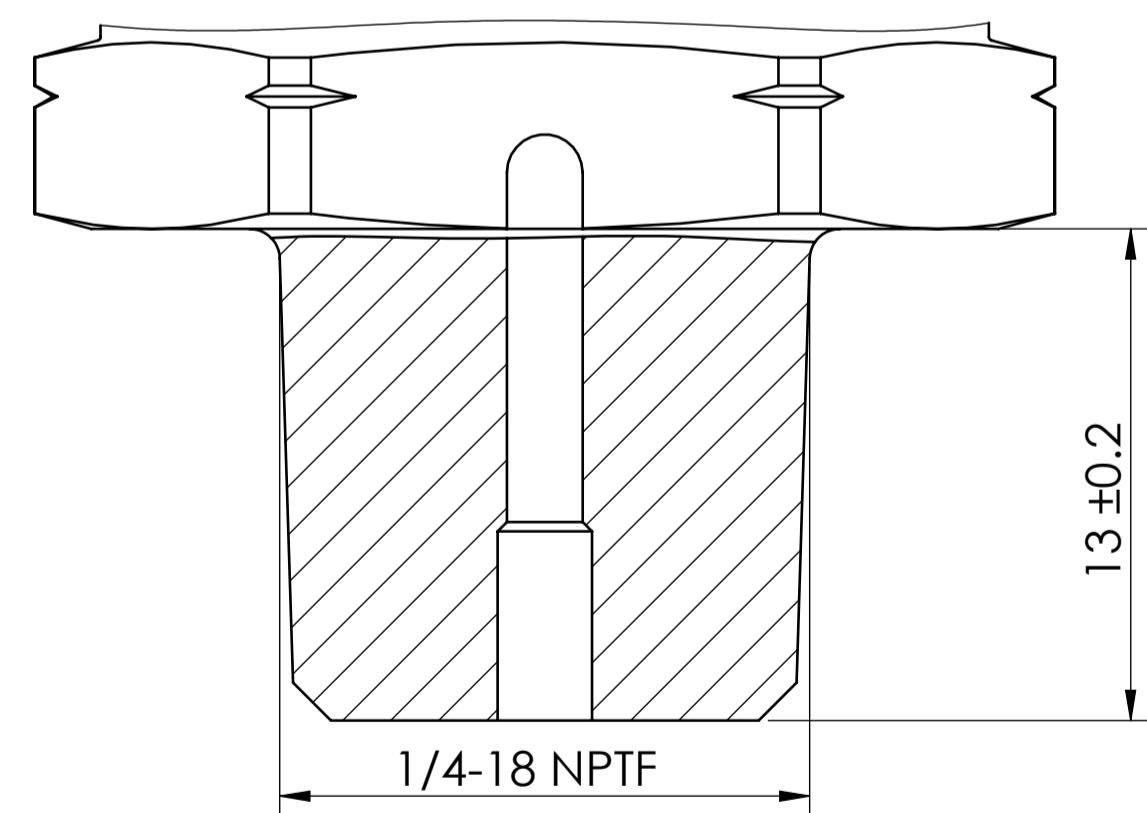
7/16-20 UNF J1926-3



1/4-19 PT(BSPT) (R1/4)

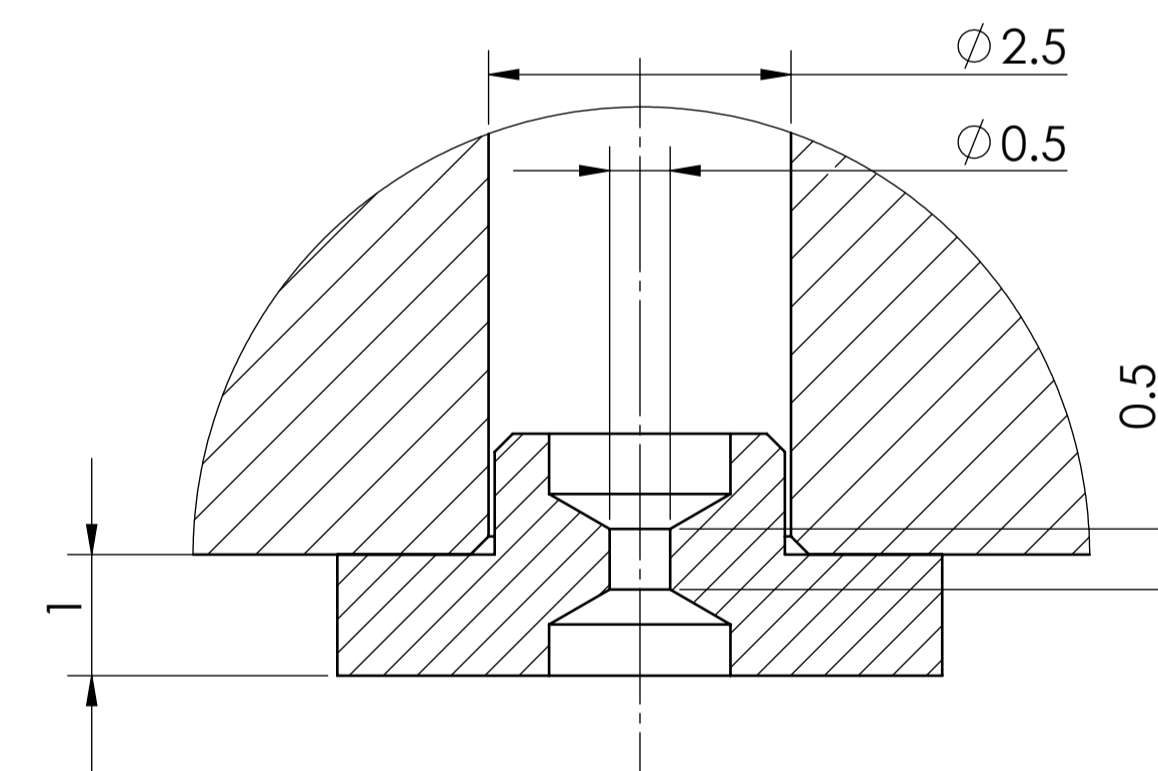
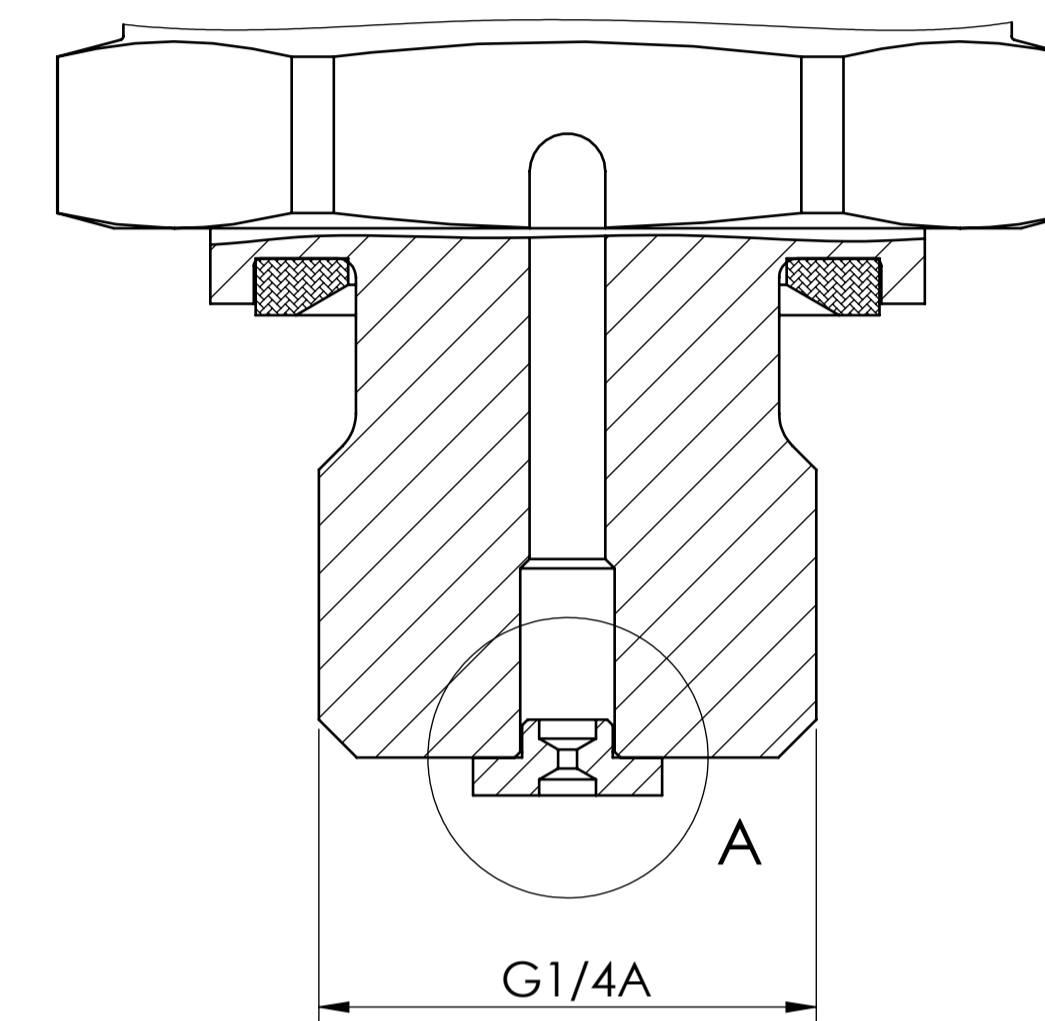


1/4-18 NPTF



SNUBBER OPTIONS (PRESSURE PORT G1/4A DIN 3852-E SHOWN)

G1/4A (MALE) DIN 3852-E



DETAIL A
SCALE 16:1