



## NEW PRODUCT HIGHLIGHT

### | PTE7300 SERIES HERMETIC DIGITAL PRESSURE SENSORS

The PTE7300 pressure sensor is the sensing platform from Sensata Technologies offering best-in-class accuracy with excellent mechanical shock resistance and EMC protection to meet the most demanding applications in mid to high pressure ranges. Available with a wide range of ports, low power consumption, fast response time, and increased sensor diagnostics capabilities, enable customers to standardize and simplify designs

#### FEATURES

- Cyclic Redundancy Check (CRC) assures you that communications and data are reliable.
- Pressure ranges from 0-16 bar to 0-600 bar (0-230 to 0-8700 psi)
- Best in class accuracy and fast response time to meet the highest performance applications
- Digital pressure output and I<sup>2</sup>C bus for connecting multiple devices
- Low power consumption to optimize energy efficiency
- High Resistance to Electromagnetic Noise (EMC)
- Stainless steel, fully hermetic, IP69K sensor package and hermetic port modules available to meet the harshest environments
- Snubber option for dampening of pressure spikes due to hammer and cavitation
- REACH/RoHS/CE compliant
- NSF61(6) (drinking water certifications)

#### RUGGED DESIGN

Built to meet demanding applications with high vibration and requirements

#### CONFIGURABLE PORT DESIGN

Allows for many different port configurations

#### ENHANCED DATA INTEGRITY

Cyclic Redundancy Check (CRC) assures you that communications and data are reliable

#### MID TO HIGH PRESSURE RANGE

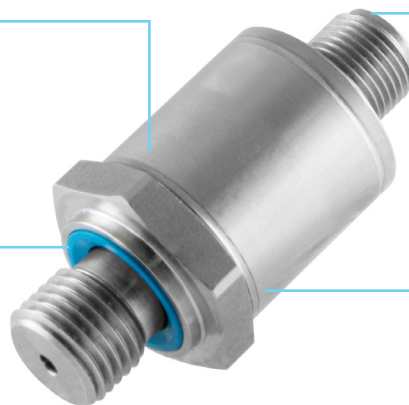
Pressure ranges from 16-600 bar (230-8700 psi) with high proof and burst pressures

#### IP69K DESIGN

Hermetic M12 Connector option

#### EASY INTEGRATION

Small form factor option for easy integration



## APPLICATIONS

- Smart Water Networks and Smart Fire Hydrants
- Medical and Industrial Gas Monitoring
- OEM Hydraulic and Process Control
- Hydraulics and Pneumatics
- Mobile Hydraulics and Off-Highway Vehicles
- Pumps and Compressors
- Air Conditioning and Refrigeration Systems
- Plant Engineering and Automation

## ORDERING OPTIONS

	<b>PTE7300</b>	-	<b>XX*</b>		<b>A</b>		<b>M</b>	-	<b>1</b>		<b>B</b>		<b>016</b>		<b>S</b>		<b>N</b>
<b>Series</b>																	
<b>PTE7300</b>																	
<b>Pressure Port</b>																	
<b>A:</b> G1/4A DIN 3852-E																	
<b>B:</b> 1/4-19PT (R1/4)																	
<b>C:</b> 7/16-20 UNF-2A (MALE)																	
<b>D:</b> 1/4-18NPT																	
<b>Electrical Connector</b>																	
<b>M:</b> M12 5-pin glass-to-metal-seal (sensor only)																	
<b>N:</b> 5x1 2mm pitch pin to header (module only)																	
<b>External Sealing</b>																	
<b>0:</b> No sealing ring																	
<b>1:</b> FKM (Viton) sealing ring (only for G1/4A pressure port)																	
<b>2:</b> HNBR sealing ring (only for 7/16-20 UNF-2A MALE pressure port)																	
<b>Output Type</b>																	
<b>B:</b> I <sup>2</sup> C (13 ENOB + CRC)																	
<b>Pressure Range</b>																	
<b>016:</b> 0-16bar																	
<b>050:</b> 0-50bar																	
<b>100:</b> 0-100bar																	
<b>200:</b> 0-200bar																	
<b>250:</b> 0-250bar																	
<b>350:</b> 0-350bar																	
<b>400:</b> 0-400bar																	
<b>500:</b> 0-500bar (sensor only)																	
<b>600:</b> 0-600bar (sensor only)																	
<b>Pressure Reference</b>																	
<b>S:</b> Sealed gauge (M12 5-pin only)																	
<b>B:</b> Gauge (module only)																	
<b>Snubber</b>																	
<b>N:</b> No snubber																	
<b>S:</b> Snubber with 0.5 damping hole																	

## CONTACT US

### Americas

+1 (800) 350 2727  
sensors@sensata.com  
switches@sensata.com

### Europe, Middle East & Africa

+359 (2) 809 1826  
pressure-info.eu@sensata.com

### Asia Pacific

sales.isasia@list.sensata.com  
China +86 (21) 2306 1500  
Japan +81 (45) 277 7117  
Korea +82 (31) 601 2004  
India +91 (80) 67920890  
Rest of Asia +886 (2) 27602006  
ext 2808