



SAL

Joystick

Introduction

The SAL Joystick from DeltaTech Controls® provides the reliability and long life required in demanding environmental conditions such as mobile equipment applications. Building on DeltaTech Controls® industry leading Hall-effect joystick technology, the SAL joystick combines flexibility with high mechanical strength. The small, robust single-axis design is ideal for the replacement of hydraulic control levers in mobile equipment applications such as construction, cranes, mining, and forestry.



Main Features

- Hall-effect sensing technology
- Life > 6 million cycles
- IP 67 rated with fully potted electronics
- Options for tactile or latching detents at end of stroke
- Standard ball grip
- Redundant Hall effect sensing



SPECIFICATIONS

Electrical

Variant

Supply Ratings - System Voltage - Voltage Range - Maximum Current		12V or 24V DC 9V ... 36V DC 50 mA at 12V DC
PWM Output	PW2	500 Hz ± 80 Hz

Mechanical

Life	> 6 million cycles
Operating temperature Storage temperature	- 40°C to 85°C - 40°C to 85°C
Operating torque	Up to 2,5 Nm
Horizontal maximum load (115mm from pivot point)	890 N (200lbs)
Vertical load maximum	890 N (200lbs)
Protection Level	IP 67
Electronics Protection	Fully potted
Lever deflection Y max	± 25°
Center position tolerance	± 1.5°
Weight	750g
Housing	Zinc
Boot	EPDM (black)
Cable	See install dimensions (18 AWG)

DIMENSIONS

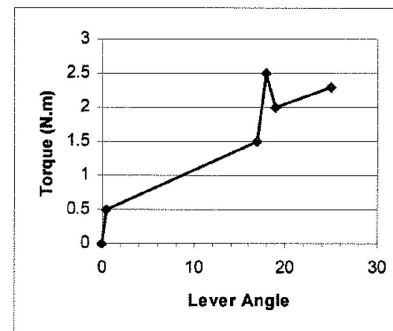
Pin Assignment

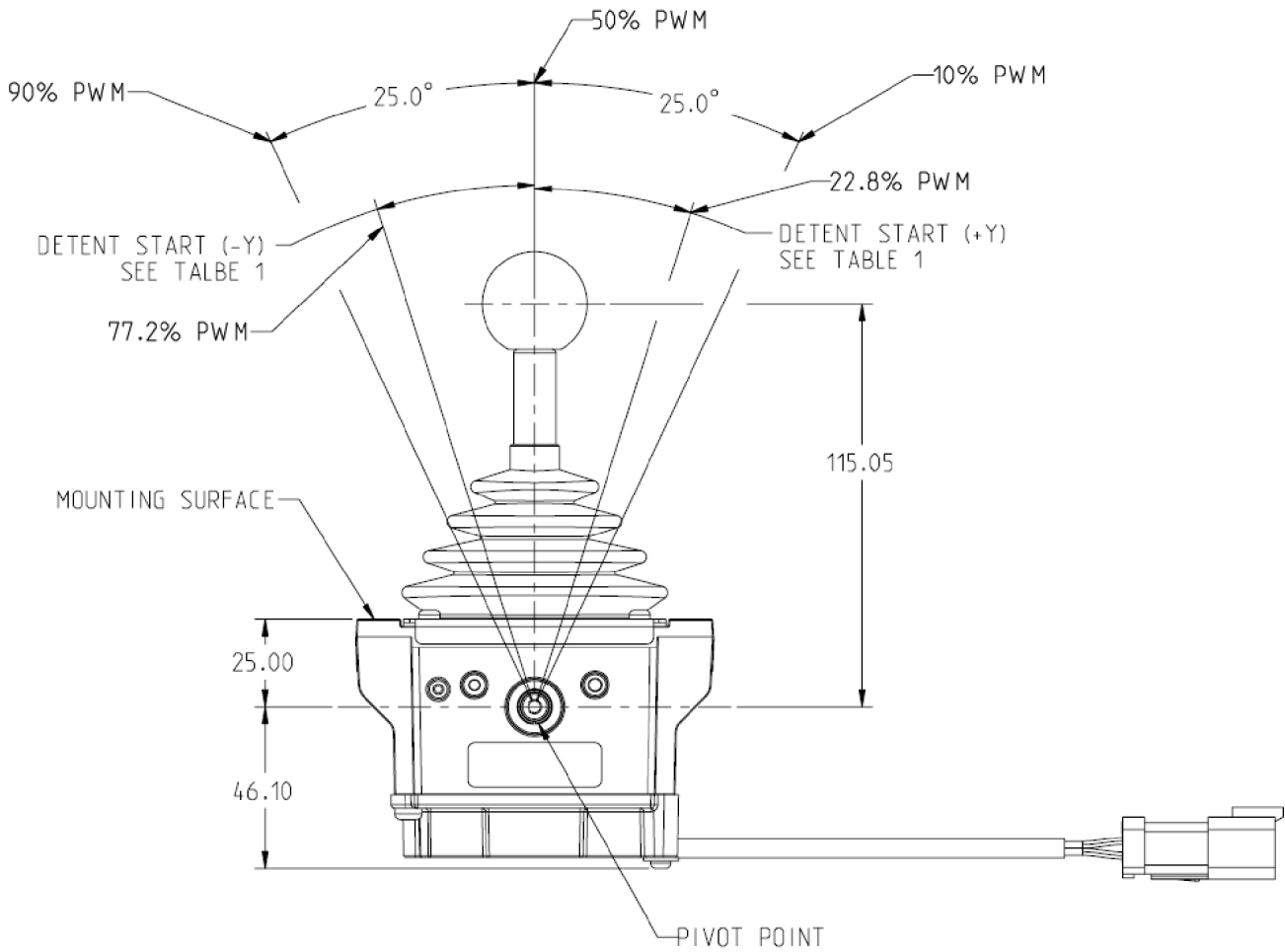
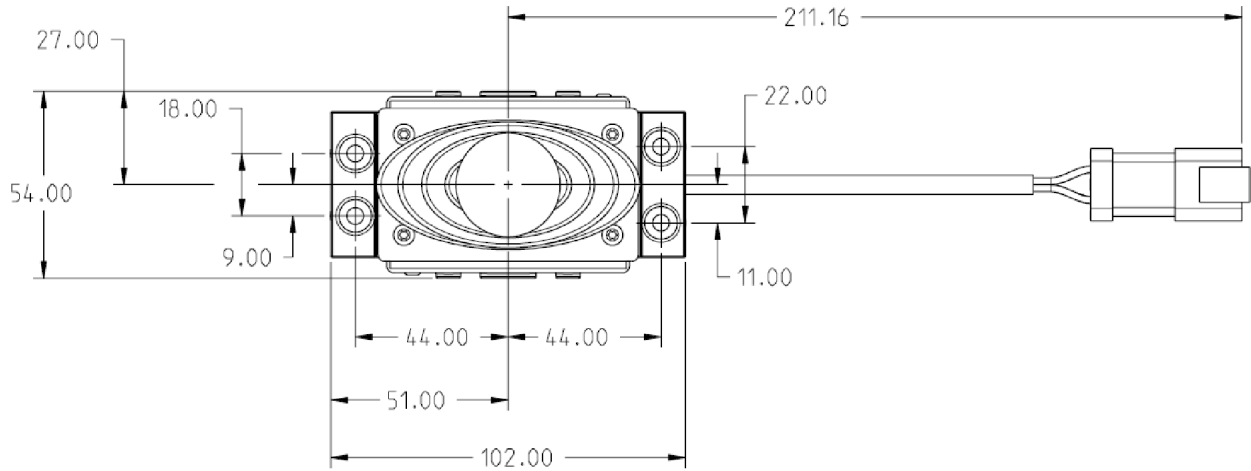
only for PWM Output

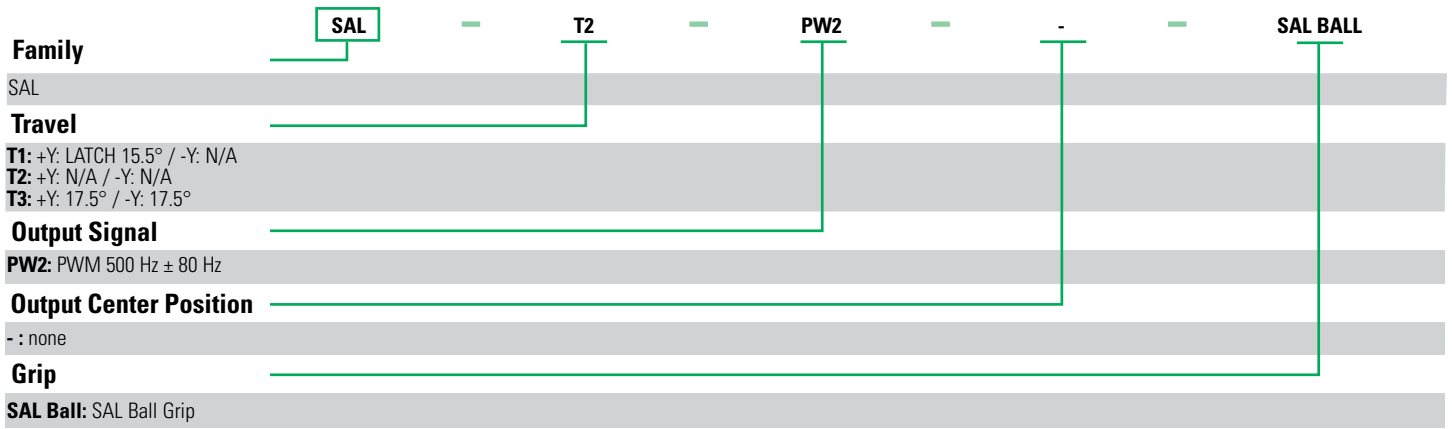
Pin Assignment		
PIN	COLOR	FUNCTION
1	WH	Power
2	BN	Ground
3	WH/YE	PWM Signal
4	WH/VT	Calibration

Operation Torque

for version +Y: 17.5°/-Y: 17.5°







Sensata Technologies, Inc. ("Sensata") data sheets are solely intended to assist designers ("Buyers") who are developing systems that incorporate Sensata products (also referred to herein as "components"). Buyer understands and agrees that Buyer remains responsible for using its independent analysis, evaluation and judgment in designing Buyer's systems and products. Sensata data sheets have been created using standard laboratory conditions and engineering practices. Sensata has not conducted any testing other than that specifically described in the published documentation for a particular data sheet. Sensata may make corrections, enhancements, improvements and other changes to its data sheets or components without notice.

Buyers are authorized to use Sensata data sheets with the Sensata component(s) identified in each particular data sheet. HOWEVER, NO OTHER LICENSE, EXPRESS OR IMPLIED, BY ESTOPPEL OR OTHERWISE TO ANY OTHER SENSATA INTELLECTUAL PROPERTY RIGHT, AND NO LICENSE TO ANY THIRD PARTY TECHNOLOGY OR INTELLECTUAL PROPERTY RIGHT, IS GRANTED HEREIN. SENSATA DATA SHEETS ARE PROVIDED "AS IS". SENSATA MAKES NO WARRANTIES OR REPRESENTATIONS WITH REGARD TO THE DATA SHEETS OR USE OF THE DATA SHEETS, EXPRESS, IMPLIED OR STATUTORY, INCLUDING ACCURACY OR COMPLETENESS. SENSATA DISCLAIMS ANY WARRANTY OF TITLE AND ANY IMPLIED WARRANTIES OF MERCHANTABILITY, FITNESS FOR A PARTICULAR PURPOSE, QUIET ENJOYMENT, QUIET POSSESSION, AND NON-INFRINGEMENT OF ANY THIRD PARTY INTELLECTUAL PROPERTY RIGHTS WITH REGARD TO SENSATA DATA SHEETS OR USE THEREOF.

All products are sold subject to Sensata's terms and conditions of sale supplied at www.sensata.com SENSATA ASSUMES NO LIABILITY FOR APPLICATIONS ASSISTANCE OR THE DESIGN OF BUYERS' PRODUCTS. BUYER ACKNOWLEDGES AND AGREES THAT IT IS SOLELY RESPONSIBLE FOR COMPLIANCE WITH ALL LEGAL, REGULATORY AND SAFETY-RELATED REQUIREMENTS CONCERNING ITS PRODUCTS, AND ANY USE OF SENSATA COMPONENTS IN ITS APPLICATIONS, NOTWITHSTANDING ANY APPLICATIONS-RELATED INFORMATION OR SUPPORT THAT MAY BE PROVIDED BY SENSATA.

Mailing Address: Sensata Technologies, Inc., 529 Pleasant Street, Attleboro, MA 02703, USA.

CONTACT US

INDUSTRIAL SOLUTIONS DIVISION

Americas
+1 (800) 350 2727
sensors.deltatech@sensata.com
Europe, Middle East & Africa
+359 (2) 809 1826
ost-info.eu@sensata.com
Asia Pacific
sales.isasia@list.sensata.com
China +86 (21) 2306 1500
Japan +81 (45) 277 7117
Korea +82 (31) 601 2004
India +91 (80) 67920890
Rest of Asia +886 (2) 27602006 ext 2808

HEAVY VEHICLE & OFF-ROAD DIVISION

Americas
+1 508 236 2196
products@sensata.com
Europe, Middle East & Africa
+49 30 43 999 0
products@sensata.com
Asia Pacific
products@sensata.com
China +86 (21) 2306 1500
Japan +81 (45) 277 7001
Korea +82 (31) 601 2004