

## CKR SERIES

READY-TO-USE DIN RAIL MOUNTED SOLID STATE RELAYS

Crydom CKR Series Solid State Relays were developed to offer the advantages of semiconductor switching technology in a standard 22.5 mm industrial package. Quick and easy installation is coupled with low drive power requirements and efficient, reliable power SCR output. This compact new design offers up to 30 Arms in ambient temperatures of 25°C.

### FEATURES

- Mounting clip incorporates tabs for screw mounting to panel
- Box Clamp terminals
- Bracket fits all standard 35 mm DIN rail profiles
- LED input status indicator



## INSTALLATION INSTRUCTIONS

Please read all installation instructions before using CKR Series SSRs. Choose one of the two mounting options and follow the instructions below.

### Mounting on DIN Rail

- Locate rail and align with non moveable end of CKR DIN clip.
- Using reasonable force, push CKR in the direction of the arrow shown in fig.1.
- For removal pull release tag in direction of arrow using blade of screwdriver and pull it away from DIN rail.

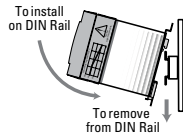


fig.1 Mounting on DIN Rail

### Mounting on Panel

- Locate the panel section on which the CKR SSR will be mounted on.
- DIN clip includes tabs for this type of mounting. Tab holes have a diameter of 4.5 mm. You will need two screws (not included) no larger than that to mount the SSR onto panel.
- Align SSR tabs with panel surface and screw both top and bottom sides. Recommended torque is 12 lb-in (1.36 Nm).

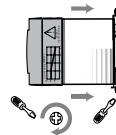


fig. 2 Mounting on Panel

### IMPORTANT CONSIDERATIONS

#### Mounting Air Gap <sup>(A)</sup>

To achieve maximum ratings, there must be a minimum spacing of 0.8 in (20 mm) between the devices (horizontally) and of 3.15 in (80 mm) measured between DIN clip tabs (vertically).

#### Earth Bonding (Grounding)

The CKR heat sink is equipped with an earth bonding screw as is required for Class 1 Protection, in accordance with EN 60950 (VDE 0804). Recommended torque is 20 lb-in (2.2 Nm).



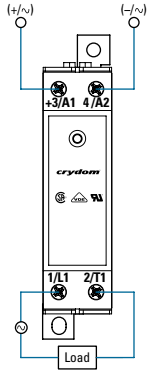
## ORDERING OPTIONS

	CKR	D	24	10	E	P	-10
<b>Series</b>	CKR						
<b>Control Voltage</b>		D: 4-32 VDC B: 90-140 VAC A: 110-280 VAC AxxxxE: 18-36 VAC					
<b>Operating Voltage</b>			24: 24-280 VAC 48: 48-530 VAC 60: 48-660 VAC				
<b>Rated Load Current</b>				10: 10 Amps 20: 20 Amps 30: 30 Amps			
<b>Overvoltage Protection</b>						Blank: Not Included P: Included	
<b>Switching Type</b>							Blank: Zero Voltage Turn-On -10: Instantaneous Turn-On

— Required for valid part number  
   For options only and not required for valid part number



## WIRING DIAGRAM



### Wire Size

Maximum wire size of AWG #10 (5.3 mm<sup>2</sup>) for input and output terminals.

### Connections

Ensure that wires ends are stripped to a minimum length of 0.4 in (10 mm).

### Recommended Screw Torque Range

5-6 lb-in (0.6-0.7 Nm) on input and output terminations.



## GENERAL NOTES

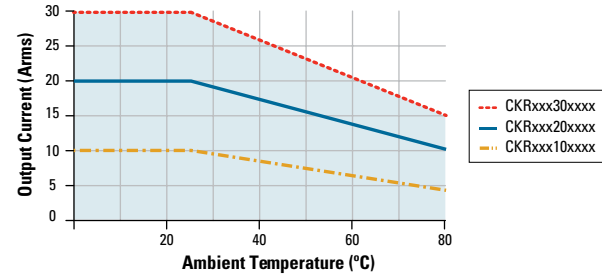
<sup>(A)</sup> The air gap is the clearance distance adjacent to either side of the relay or assembly measured to the next closer relay or assembly.

<sup>(B)</sup> 100% Duty Cycle.



## DERATING CURVES <sup>(B)</sup>

The following derating curves must be observed before installation.



Sensata Technologies, Inc. ("Sensata") data sheets are solely intended to assist designers ("Buyers") who are developing systems that incorporate Sensata products (also referred to herein as "components"). Buyer understands and agrees that Buyer remains responsible for using its independent analysis, evaluation and judgment in designing Buyer's systems and products. Sensata data sheets have been created using standard laboratory conditions and engineering practices. Sensata has not conducted any testing other than that specifically described in the published documentation for a particular data sheet. Sensata may make corrections, enhancements, improvements and other changes to its data sheets or components without notice.

Buyers are authorized to use Sensata data sheets with the Sensata component(s) identified in each particular data sheet. HOWEVER, NO OTHER LICENSE, EXPRESS OR IMPLIED, BY ESTOPPEL OR OTHERWISE TO ANY OTHER SENSATA INTELLECTUAL PROPERTY RIGHT, AND NO LICENSE TO ANY THIRD PARTY TECHNOLOGY OR INTELLECTUAL PROPERTY RIGHT, IS GRANTED HEREIN. SENSATA DATA SHEETS ARE PROVIDED "AS IS". SENSATA MAKES NO WARRANTIES OR REPRESENTATIONS WITH REGARD TO THE DATA SHEETS OR USE OF THE DATA SHEETS, EXPRESS, IMPLIED OR STATUTORY, INCLUDING ACCURACY OR COMPLETENESS. SENSATA DISCLAIMS ANY WARRANTY OF TITLE AND ANY IMPLIED WARRANTIES OF MERCHANTABILITY, FITNESS FOR A PARTICULAR PURPOSE, QUIET ENJOYMENT, QUIET POSSESSION, AND NON-INFRINGEMENT OF ANY THIRD PARTY INTELLECTUAL PROPERTY RIGHTS WITH REGARD TO SENSATA DATA SHEETS OR USE THEREOF. All products are sold subject to Sensata's terms and conditions of sale supplied at [www.sensata.com](http://www.sensata.com) SENSATA ASSUMES NO LIABILITY FOR APPLICATIONS ASSISTANCE OR THE DESIGN OF BUYERS' PRODUCTS. BUYER ACKNOWLEDGES AND AGREES THAT IT IS SOLELY RESPONSIBLE FOR COMPLIANCE WITH ALL LEGAL, REGULATORY AND SAFETY-RELATED REQUIREMENTS CONCERNING ITS PRODUCTS, AND ANY USE OF SENSATA COMPONENTS IN ITS APPLICATIONS, NOTWITHSTANDING ANY APPLICATIONS-RELATED INFORMATION OR SUPPORT THAT MAY BE PROVIDED BY SENSATA. Mailing Address: Sensata Technologies, Inc., 529 Pleasant Street, Attleboro, MA 02703, USA.

## CONTACT US

### Americas

+1 (877) 502 5500  
sales.crydom@sensata.com

### Europe, Middle East & Africa

+44 (1202) 416170  
ssr-info.eu@sensata.com

### Asia Pacific

sales.isasia@list.sensata.com  
China +86 (21) 2306 1500  
Japan +81 (45) 277 7117  
Korea +82 (31) 601 2004  
India +91 (80) 67920890  
Rest of Asia +886 (2) 27602006 ext 2808