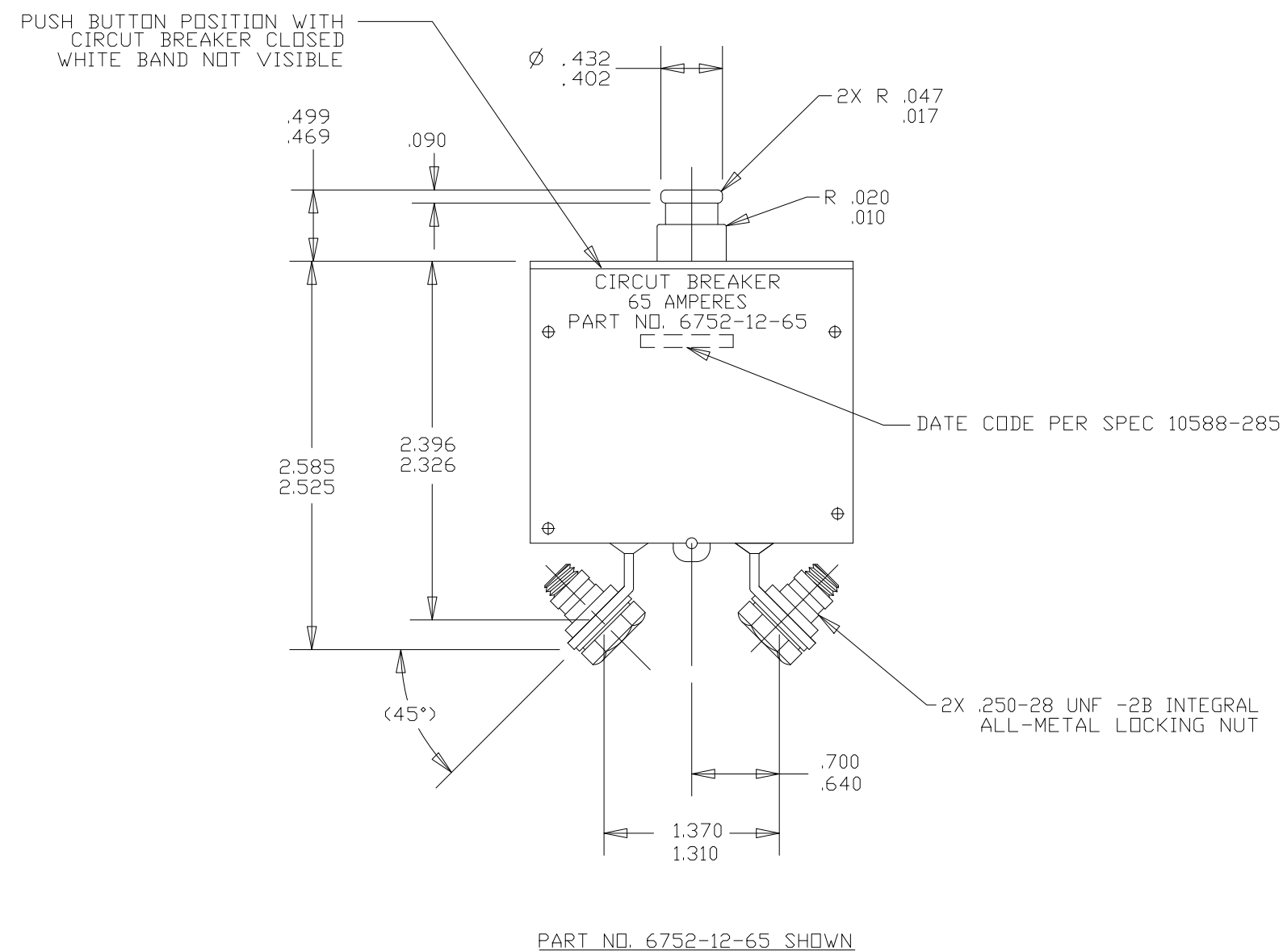
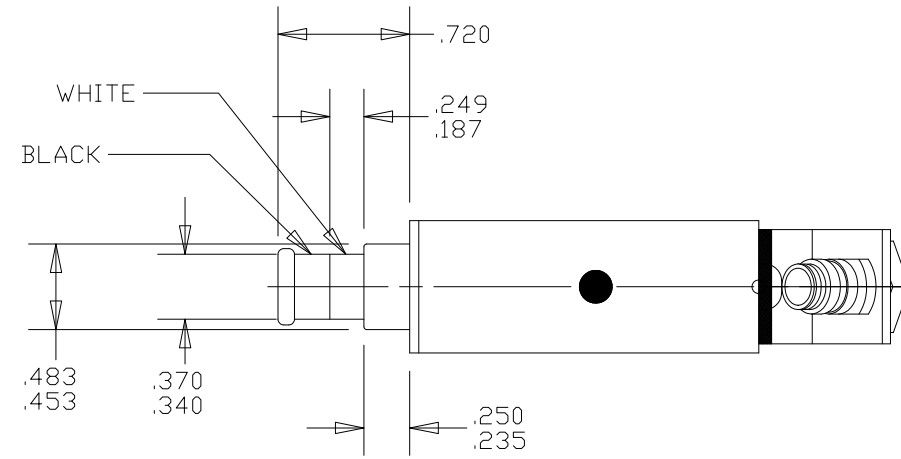
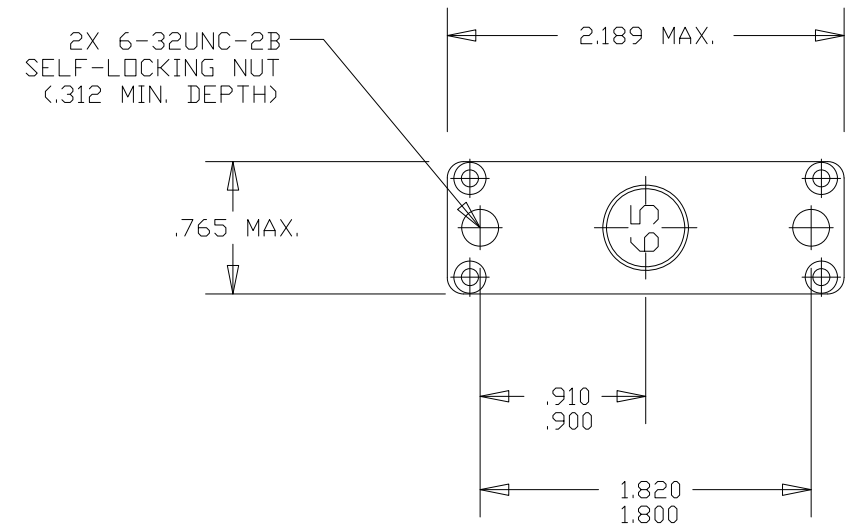
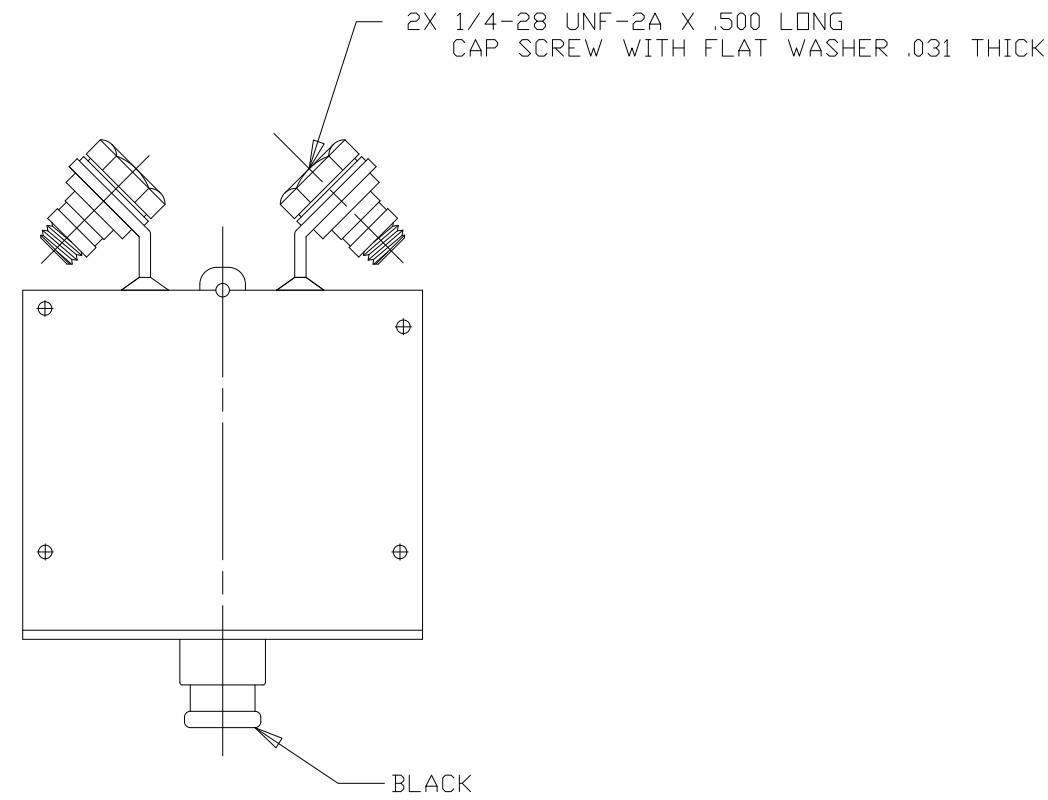


ZONE	REV.	REVISION DESCRIPTION	ECN NO.	DATE
	F	REMOVE 16, 17, 18 (STRENGTH OF TERMINALS, MOUNTING AND ACTUATOR) RENUMBER CHARACTERISTICS; ADD NOTE 2; PD	ECO-104236	22-AUG-2014



PERFORMANCE CHARACTERISTICS				
1. CALIBRATION	MIN. ULT TRIP	MAX. ULT TRIP	200%	400%
AMBIENT TEMPERATURE				
-54°C	105%	170%	15 - 65	2.3 - 7.5
25°C	105%	145%	15 - 65	2.3 - 7.5
71°C	90%	140%	15 - 65	2.3 - 7.5
85°C	90%	140%	10 - 65	2.3 - 7.5
2. RUPTURE				
	120 VAC 30 VDC	400 CYCLE	2,800 AMPS 6,000 AMPS	
3. DURABILITY				
	120 VAC MECHANICAL RESISTIVE LOAD INDUCTIVE LOAD	400 CYCLE (NO LOAD)	5,000 CYCLES 5,000 CYCLES 1,250 CYCLES	
4. VOLTAGE DROP, WHILE CARRYING RATED CURRENT				
	AMP RATING	MAXIMUM VOLTAGE DROP		
	65	.3 V		
5. VIBRATION				
	FREQUENCY	G LEVEL		
	5 - 10 CPS	0.2 DOUBLE AMPLITUDE		
	10 - 23 CPS	±1 G		
	23 - 74 CPS	0.036 DOUBLE AMPLITUDE		
	74 - 300 CPS	±10 G		
	300 - 600 CPS	±15 G		
	600 - 700 CPS	±14 G		
	700 - 1500 CPS	±10 G		
6. OPERATING FORCE				
		OPENING: 1.5-8.0 LBS. CLOSING: 4.0-12 LBS.		
7. DIELECTRIC STRENGTH				
		1500 VAC, RMS.		
8. INSULATION RESISTANCE				
		100 MEGOHMS AT 500 VDC.		
9. EXPLOSION PROOF				
		WHILE INTERRUPTING RUPTURE CURRENTS.		
10. HUMIDITY				
		240 HOURS.		
11. CORROSION RESISTANCE				
		50 HOURS.		
12. SAND AND DUST				
		12 HOURS.		
13. MECHANICAL SHOCK				
		25 G FOR 11±1 MILLISECONDS.		
14. OVERLOAD CYCLING				
		100 CYCLES AT 200% RATED CURRENT.		
15. FUNGUS RESISTANCE				
		28 DAYS.		
16. ACCELERATION				
		10 G'S FOR 1 MINUTE.		
17. RECLOSING				
		NO AUTOMATIC RECLOSE.		
18. TRIP FREE				
		RESETTABLE ONLY AFTER MOVING THE ACTUATOR TO THE FULL OPEN POSITION.		

- NOTES:  
1. MAX TORQUE OF 32 IN-LB.  
2. MAX TORQUE OF 10 IN-LB. FOR MOUNTING SCREWS.

FOR REFERENCE ONLY, CHECK LATEST REVISION BEFORE USE. PARTS MADE TO THIS PRINT MUST CONFORM TO E9898 REV. E		 529 PLEASANT STREET P.O. BOX 2964 ATTLEBORO, MA 02703	
DRAWN G.LAPATI DATE 01-MAY-2008 ENGINEER K.WASHBURN DATE 01-MAY-2008 APPROVED A.NAULT DATE 01-MAY-2008 APPROVED W.BENTLEY DATE 01-MAY-2008	NEITHER THIS PRINT NOR THE INFORMATION CONTAINED HEREON IS TO BE USED AGAINST THE INTERESTS OF SENSATA TECHNOLOGIES, INC. OR AGAINST THE INTERESTS OF ANY OF ITS AFFILIATED COMPANIES OR WHOLLY OWNED SUBSIDIARIES UNLESS OTHERWISE SPECIFIED DIMENSIONS ARE IN INCHES TOLERANCES DECIMALS ANGLES X.XXX ±.030 THIRD ANGLE PROJECTION DO NOT SCALE DRAWING		TITLE 6752-12-65 TYPE PUSH PULL CIRCUIT BREAKER ENVELOPE DRAWING DWG NO. <b>6752-12-65</b> SCALE 1:1 AUTOCAD SHEET 1 OF 1
		SIZE C	REV. F