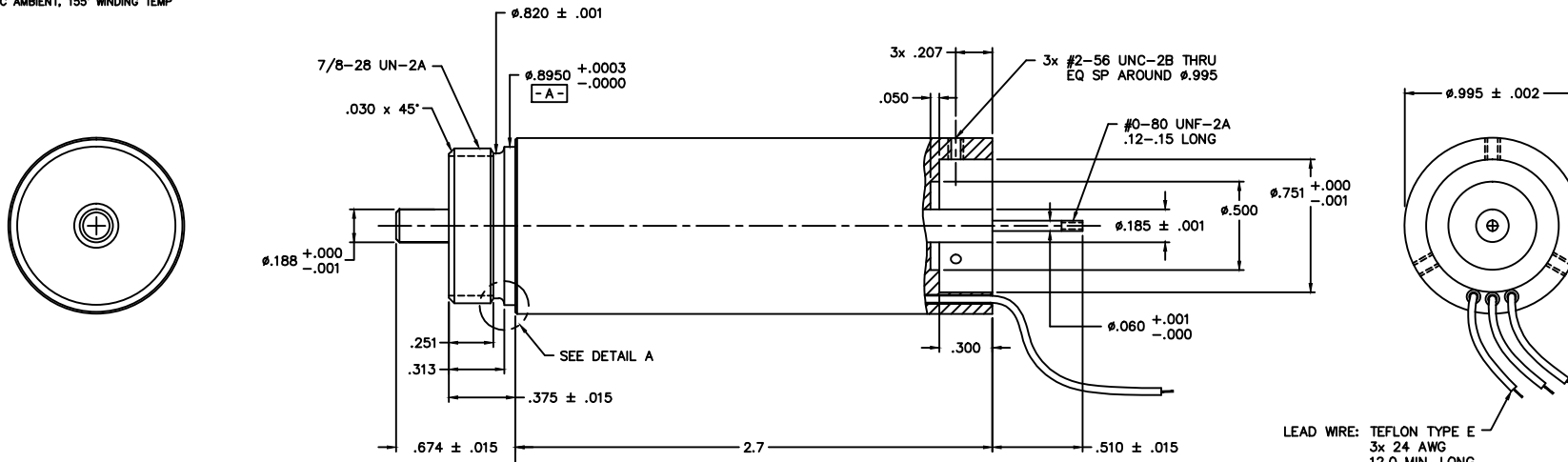
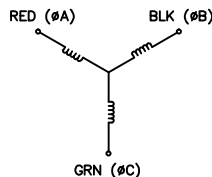


WINDING CONSTANTS*	UNITS	TOL	SYM	WDG A
DC RESISTANCE	OHMS	±12.5%	R	2.8
VOLTAGE @ PEAK TORQUE	VOLTS	NOMINAL	Vp	10.8
CURRENT @ PEAK TORQUE	AMPERES	NOMINAL	Ip	3.85
TORQUE SENSITIVITY	OZ-IN/AMP	±10%	Kt	3.9
BACK EMF CONSTANT	VOLTS/(RAD/SEC)	±10%	Kb	0.0275
INDUCTANCE	MILLIHENRY	±30%	L	0.46

MOTOR PARAMETERS*	UNITS	SYM	VALUE
PEAK TORQUE	OZ-IN	Tp	18.0
CONTINUOUS STALL TORQUE **	OZ-IN	Tca	6.0
MOTOR CONSTANT	OZ-IN/AMP	Km	2.3
ELECTRICAL TIME CONSTANT	MILLISECOND	Te	0.17
MECHANICAL TIME CONSTANT	MILLISECOND	Tm	3.1
POWER 1/2 R @ Tp	WATTS	Pp	41.4
DAMPING FACTOR (ZERO IMPEDANCE)	OZ-IN/(RAD/SEC)	Fo	0.0384
FRICTION TORQUE	OZ-IN	Tf	0.25
ROTOR INERTIA	OZ-IN SEC ²	Jm	1.2x10 ⁻⁴
THEO. NO-LOAD SPEED @ 24 VDC	RPM	So	18,000
SPEED @ 13.6 OZ-IN @ 24 VDC	RPM	Sl	6,000
THEO. ACCELERATION @ Tp	RAD/SEC ²	αT	1.3x10 ⁵
THERMAL RESISTANCE	°C/WATT	θTH	8.0
MAX ALLOWABLE WINDING TEMP	°C	TEMP	220
PHASES/WINDING TYPE			3/Y
POLES			4
WEIGHT	OZ	WT	7.2

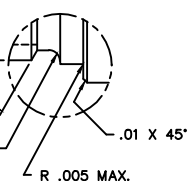
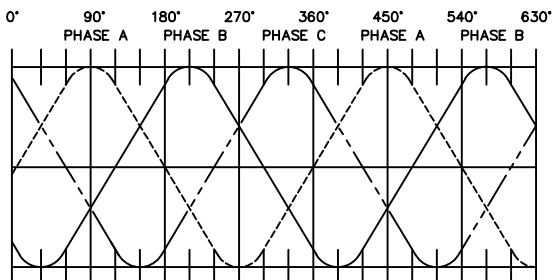
* 25°C AMBIENT TEMP
 ** 25°C AMBIENT, 155° WINDING TEMP

LTR	ECO NO.	DESCRIPTION	DRN	APP'D	DATE
X1	110XXX	INITIAL RELEASE	JWT		



LEAD WIRE: TEFLON TYPE E
 3x 24 AWG
 12.0 MIN. LONG

DIRECTION OF ROTATION
 CW VIEWED FROM LEAD SIDE



DETAIL A
 SCALE: 4/1

THESE COMMODITIES, TECHNOLOGY OR SOFTWARE IF EXPORTED FROM THE UNITED STATES SHALL BE IN ACCORDANCE WITH THE EXPORT ADMINISTRATION REGULATIONS. DIVERSION CONTRARY TO U.S. LAW IS PROHIBITED.

Proprietary rights of BEI Kimco are involved in the subject matter of this material and all manufacturing, reproduction, use, and sales pertaining to such subject matter are expressly reserved. This confidential and proprietary document is submitted for a specified purpose, and the recipient by accepting this material agrees that this material will not be used, copied, or reproduced in whole or in part nor its contents revealed in any manner or to any person except to meet the purpose for which it was delivered.

THIRD ANGLE PROJECTION

UNLESS OTHERWISE SPECIFIED:
 -ALL DIMENSIONS ARE IN INCHES
 -BREAK SHARP EDGES .015 MAX.
 -SURFACE ROUGHNESS √G3
 -DIMENSIONS APPLY AFTER FINISH
 -MAX FILLET R .010

TOLERANCES:
 DECIMALS ANGULAR
 X ± .03 30°-30'
 XX ± .01
 XXX ± .005
 DO NOT SCALE DRAWING

BEI KIMCO MAGNETICS DIVISION
 VISTA, CA 92081

DRAWN J. THOMPSON	DATE 09/02/11	TITLE BRUSHLESS DC MOTOR
MECH CHECK	APP'D	FILE NO. M:\TOP\DIP\DIP16-08-008Z
SIZE C	PFCM NO. 55789	DWG NO. DIH10-27-001A
SCALE 2/1	REV X1	SHEET 1 OF 1

- ALL ABBREVIATIONS IAW ASME Y14.38.
 - INTERPRET DRAWING IAW ASME Y14.100.
 - INTERPRET DIMENSIONING AND TOLERANCING IAW ASME Y14.5M-1994.
- NOTES: UNLESS OTHERWISE SPECIFIED