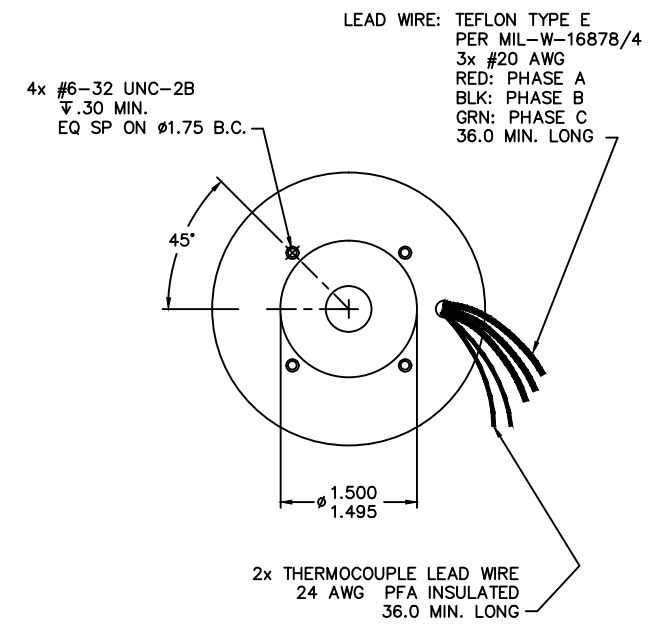
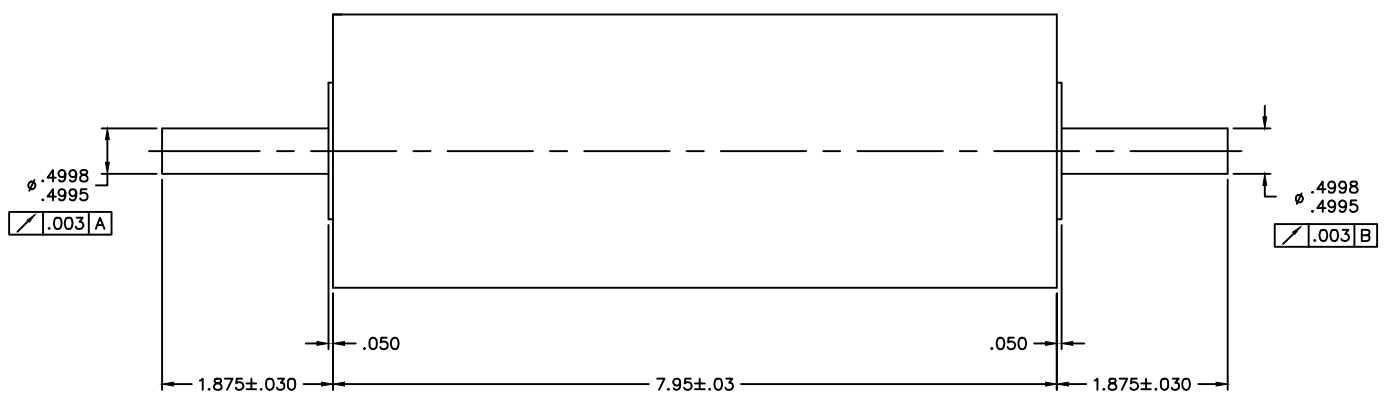
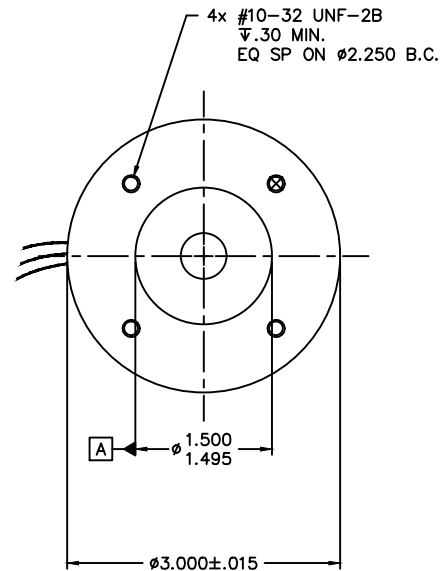
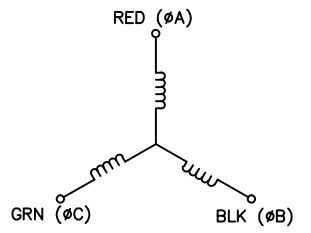


LTR	ECO NO.	DESCRIPTION	DRN	APP'D	DATE
X1	110xxx	INITIAL RELEASE	JWT		

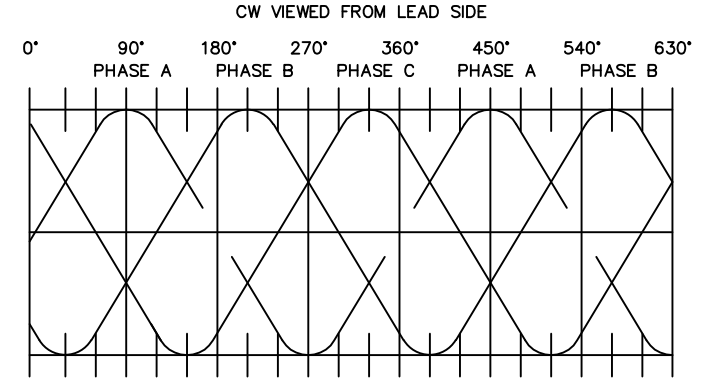
WINDING CONSTANTS*	UNITS	TOL	SYM	WDG A
DC RESISTANCE	OHMS	±12.5%	R	9.5
VOLTAGE @ T _p	VOLTS	NOMINAL	V _p	37.5
CURRENT @ T _p	AMPERES	NOMINAL	I _p	3.9
TORQUE SENSITIVITY	OZ-IN/AMP	±10%	K _T	200
BACK EMF CONSTANT	VOLTS/(RAD/SEC)	±10%	K _B	1.412
INDUCTANCE @ 1 KHZ	MILLIHENRY	REF	L	48.0

MOTOR PARAMETERS*	UNITS	SYM	VALUE
PEAK TORQUE	OZ-IN	T _p	780
CONTINUOUS STALL TORQUE **	OZ-IN	T _{CS}	321
MOTOR CONSTANT	OZ-IN/√WATT	K _M	65.0
ELECTRICAL TIME CONSTANT	MILLISECOND	t _E	5.0
MECHANICAL TIME CONSTANT	MILLISECOND	t _M	0.73
POWER I ² R @ T _p	WATTS	P _p	145
DAMPING FACTOR (ZERO IMPEDANCE)	OZ-IN/(RAD/SEC)	F ₀	30
FRICITION TORQUE	OZ-IN	T _F	20.0
ROTOR INERTIA	OZ-IN SEC ²	J _M	0.0216
THEO. NO-LOAD SPEED @ 250 VDC	RPM	S ₀	2,000
SPEED @ 125 OZ-IN & 250 VDC	RPM	S _L	1,400
THEO ACC @ T _p	RAD/SEC ²	α _T	2.8x10 ⁴
THERMAL RESISTANCE ***	°C/WATT	θ _{TH}	1.0
MAX ALLOWABLE WINDING TEMP	°C	TEMP	220
PHASES/WINDING TYPE			3/Y
POLES			8
WEIGHT	OZ	W _T	186

* 10 SEC @ 25°C AMBIENT TEMP
 ** 177°C AMBIENT, 220° WINDING TEMP
 *** MOTOR IMMERSED IN OIL AT 350°F



DIRECTION OF ROTATION



THESE COMMODITIES, TECHNOLOGY OR SOFTWARE IF EXPORTED FROM THE UNITED STATES SHALL BE IN ACCORDANCE WITH THE EXPORT ADMINISTRATION REGULATIONS. DIVERSION CONTRARY TO U.S. LAW IS PROHIBITED.

Proprietary rights of BEI Kimco are involved in the subject matter of this material and all manufacturing, reproduction, use, and sales pertaining to such subject matter are expressly reserved. This confidential and proprietary document is submitted for a specified purpose, and the recipient by accepting this material agrees that this material will not be used, copied, or reproduced in whole or in part nor its contents revealed in any manner or to any person except to meet the purpose for which it was delivered.

THIRD ANGLE PROJECTION

UNLESS OTHERWISE SPECIFIED:
 -ALL DIMENSIONS ARE IN INCHES
 -BREAK SHARP EDGES .015 MAX.
 -SURFACE ROUGHNESS √63
 -DIMENSIONS APPLY AFTER FINISH
 -MAX FILLET R .010
 -DIAMETERS SHALL NOT EXCEED A RUNDOUT OF .005 FIM

TOLERANCES:
 DECIMALS ANGULAR
 .X ± .03 ±0° 30'
 .XX ± .01
 .XXX ± .005

DO NOT SCALE DRAWING

BEI KIMCO MAGNETICS DIVISION
 VISTA, CA 92081

DC BRUSHLESS MOTOR

DRAWN: J. THOMPSON DATE: 9/02/11 TITLE: DC BRUSHLESS MOTOR

MECH CHECK

APPD

FILE NO. M:\TL\DI\DI30-80-007A SCALE: NONE SHEET 1 OF 1

SIZE: D FSCM NO. 55789 DWG NO. DII30-80-007A REV X1

4. MOTOR INCLUDES SEALED TYPE K THERMOCOUPLE OMEGA P/N HSTC-TT-K-24S-36.
 3. ALL ABBREVIATIONS IAW ASME Y14.38.
 2. INTERPRET DRAWING IAW ASME Y14.100.
 1. INTERPRET DIMENSIONING AND TOLERANCING IAW ASME Y14.5M-1994.
- NOTES: UNLESS OTHERWISE SPECIFIED