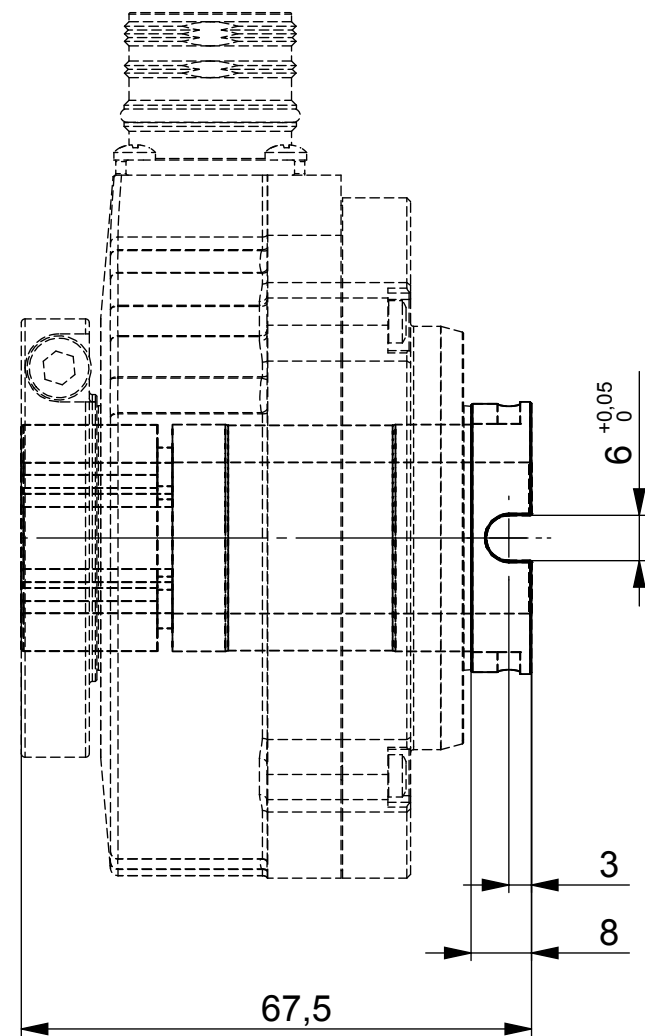
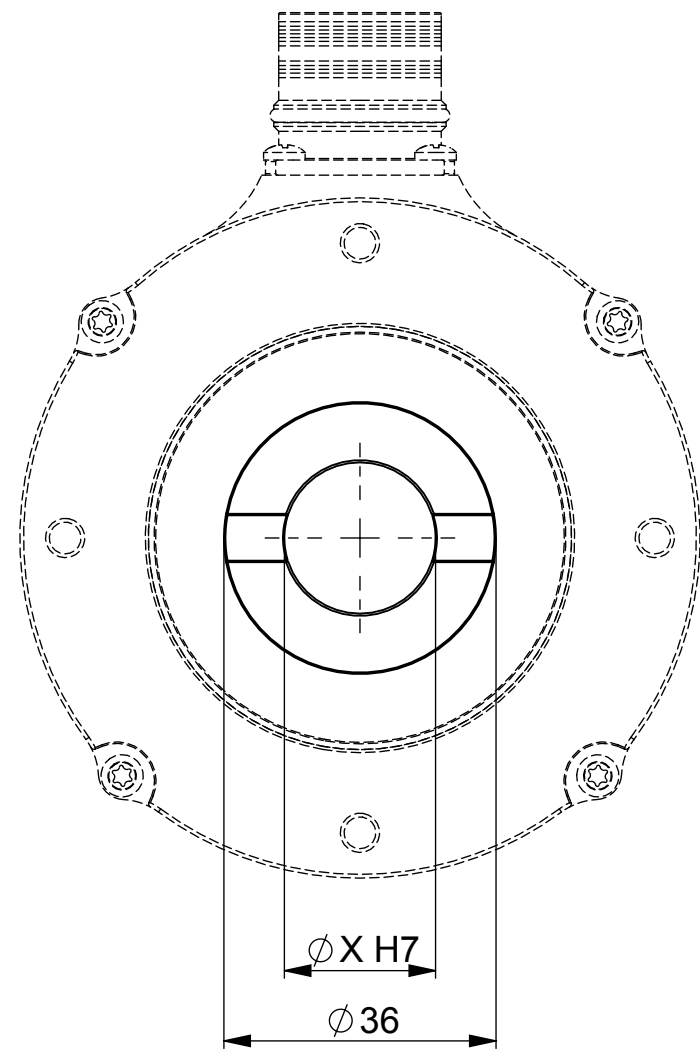


4

3

2

1

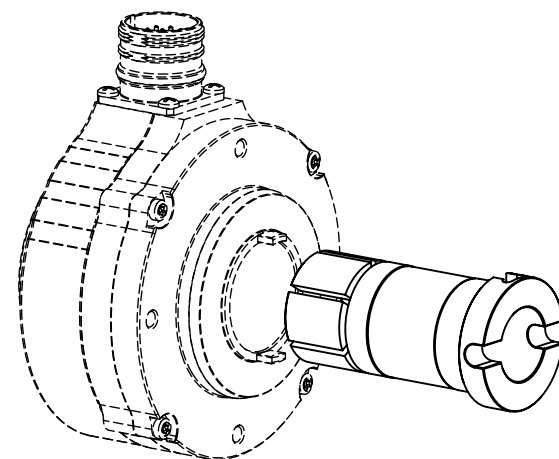


Functional Safety Product -TÜV certified -

Toute modification est soumise à l'approbation du FSM

All modifications must be approved by the

Functional Safety Manager (FSM)



Ordering reference: **9418/S20** for X=20mm
9418/S25 for X=25mm
9418/S25.4 for X=25.4mm

UNCONTROLLED COPY

FIRST ISSUE DATE : 28/03/2018
 DRAWN : RHM
 APPROVED : JHH
 DATE : 28/03/2018

SENSATA TECHNOLOGIES PROPRIETARY AND CONFIDENTIAL. NEITHER THIS PRINT NOR THE INFORMATION CONTAINED HEREON IS TO BE USED AGAINST THE INTERESTS OF SENSATA TECHNOLOGIES OR AGAINST THE INTERESTS OF ANY OF ITS AFFILIATED COMPANIES OR WHOLLY OWNED SUBSIDIARIES.



BEI SENSORS SAS
 Espace Européen de l'Entreprise
 9, rue de Copenhague
 BP 70044 - F 67013 STRASBOURG Cedex
 Tel : +33 (0)3 88 20 81 40

BEI Sensors

ECN : .
 DATE : .
 Housing material :
 Flange material :
 Sleeve material : Peek

UNLESS OTHERWISE SPECIFIED DIMENSIONS ARE IN MILLIMETERS (INCHES) AND ARE INTENDED AS NOMINAL. SEE PRODUCT SPECIFICATION FOR MORE DETAILS.

DO NOT SCALE DRAWING
 EUROPEAN SYSTEM

TITLE DSU9 Reduction sleeve			
SIZE A3	DWG NO. M015	REV. A	
SCALE 1/1	SOLIDWORKS	SHEET 1 OF 1	

DEVICE: PROJECT:

4

3

2

1

D

D

C

C

B

B

A

A