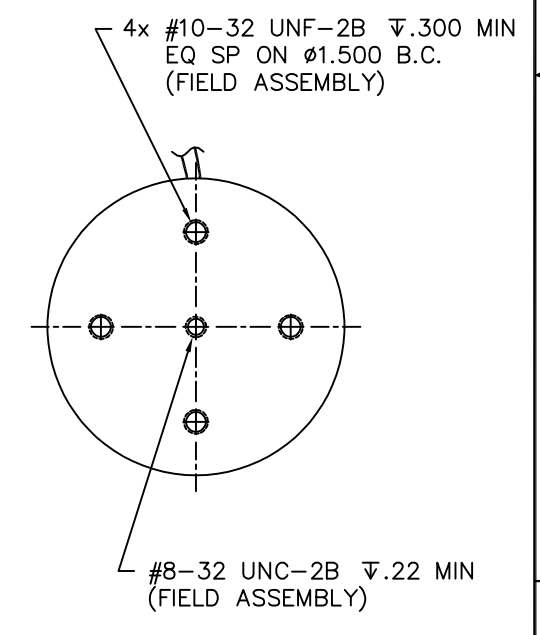
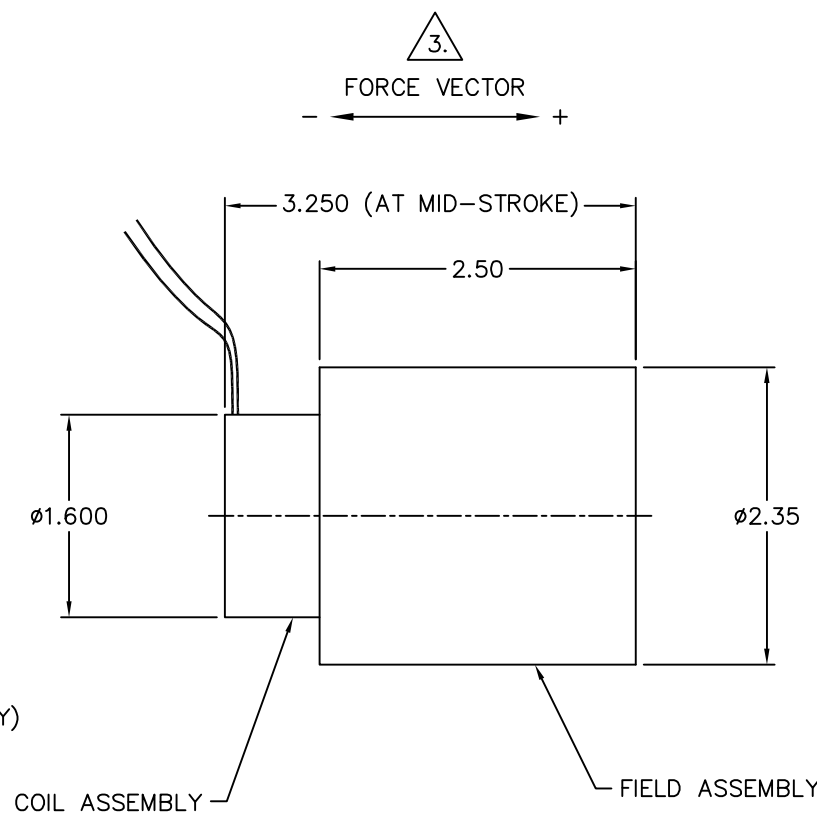
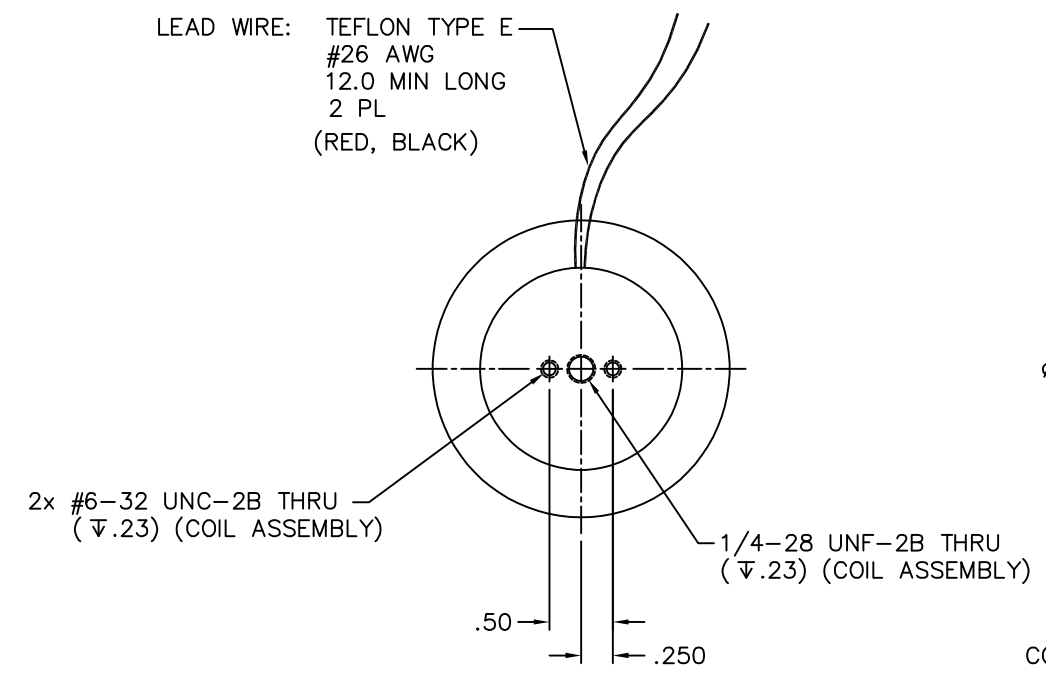


WINDING CONSTANTS *	UNITS	TOL	SYM	WDG Z
DC RESISTANCE	OHMS	±12.5%	R	5.5
VOLTAGE @ F _P	VOLTS	NOMINAL	V _C	27.5
CURRENT @ F _P	AMPERES	NOMINAL	I _C	5.0
FORCE SENSITIVITY	LB/AMP	±10%	K _F	1.60
BACK EMF CONSTANT	VOLTS/(FT/SEC)	±10%	K _B	2.17
INDUCTANCE ****	MILLI-HENRY	±30%	L	2.3

LINEAR ACTUATOR PARAMETERS *	UNITS	SYM	NOM. VALUE
PEAK FORCE **	LB	F _P	8.0
CONTINUOUS STALL FORCE ***	LB	F _{CS}	3.1
ACTUATOR CONSTANT	LB/√WATT	K _A	0.68
ELECTRICAL TIME CONSTANT	MICRO-SEC	τ _E	418
MECHANICAL TIME CONSTANT	MILLI-SEC	τ _M	7.4
POWER I ² R @ F _P	WATTS	P _{REF.}	138
STROKE	± IN		0.45
CLEARANCE ON EACH SIDE OF COIL	IN	—	0.015
THERMAL RESISTANCE OF COIL	°C/WATT	θ _{th}	3.7
MAX ALLOWABLE TEMP OF COIL	°C	TEMP	130
WEIGHT OF COIL ASSEMBLY	OZ	WT _c	2.4
WEIGHT OF FIELD ASSEMBLY	OZ	WT _f	42

LTR	ECO NO.	DESCRIPTION	DRN	APP'D	DATE
A	020383	EDIT NOTE	MJL	MG	5/3/02
B	050057	MATCH REV. TO AVANTE	JJC	M.G	1/26/05

* AT MID-STROKE & 25°C AMBIENT TEMPERATURE
 ** 10 SECONDS AT 25°C AMBIENT & 155°C COIL TEMPERATURE
 *** 25°C AMBIENT & 155°C COIL TEMPERATURE
 **** MEASURED AT 1000 Hz



4. MECHANICAL OVERTRAVEL IN THE POSITIVE (+) DIRECTION IS .015 MINIMUM.
3. A POSITIVE (+) VOLTAGE APPLIED TO THE BLACK LEAD WILL PRODUCE A FORCE ON THE COIL ASSEMBLY IN THE POSITIVE (+) DIRECTION.
2. INSULATION RESISTANCE: 100 MEGOHMS MINIMUM AT 500 VDC.
1. INTERPRET DIMENSIONS & TOLERANCES IAW ASME Y14.5M-1994.

NOTES: UNLESS OTHERWISE SPECIFIED

Proprietary rights of BEI Kimco are involved in the subject matter of this material and all manufacturing, reproduction, use, and sales pertaining to such subject matter are expressly reserved. This confidential and proprietary document is submitted for a specified purpose, and the recipient by accepting this material agrees that this material will not be used, copied, or reproduced in whole or in part nor its contents revealed in any manner or to any person except to meet the purpose for which it was delivered.	THIRD ANGLE PROJECTION	BEI KIMCO MAGNETICS DIVISION VISTA, CA 92081		
	UNLESS OTHERWISE SPECIFIED: -ALL DIMENSIONS ARE IN INCHES -BREAK SHARP EDGES .015 MAX. -SURFACE ROUGHNESS √63 -DIMENSIONS APPLY AFTER FINISH -MAX FILLET R .010	DRAWN N. FRENCH DATE 2/1/99	TITLE LINEAR ACTUATOR	
	TOLERANCES: DECIMALS .X ± .03 .XX ± .01 .XXX ± .005 DD NDT SCALE DRAWING	MECH CHECK PHIL STAHL 1/26/05	APPD ACM 2/2/99	SIZE C
		FILE NO. L:\TOP LEVEL\LA\...	FSCM NO. 55789	DWG NO. LA24-33-000A
		SCALE 1/1	SHEET 1 OF 1	

LA24-33-000A