

4

3

2

1

D

D

C

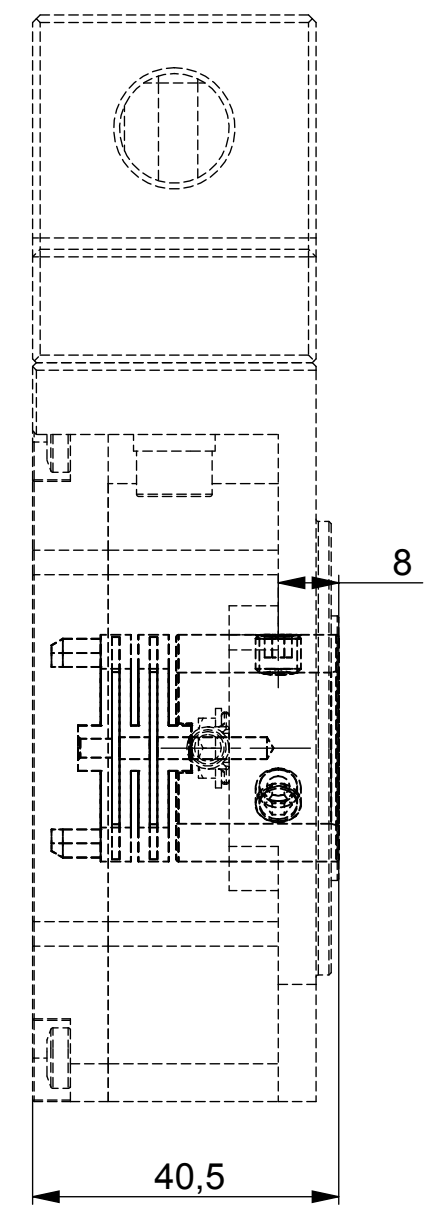
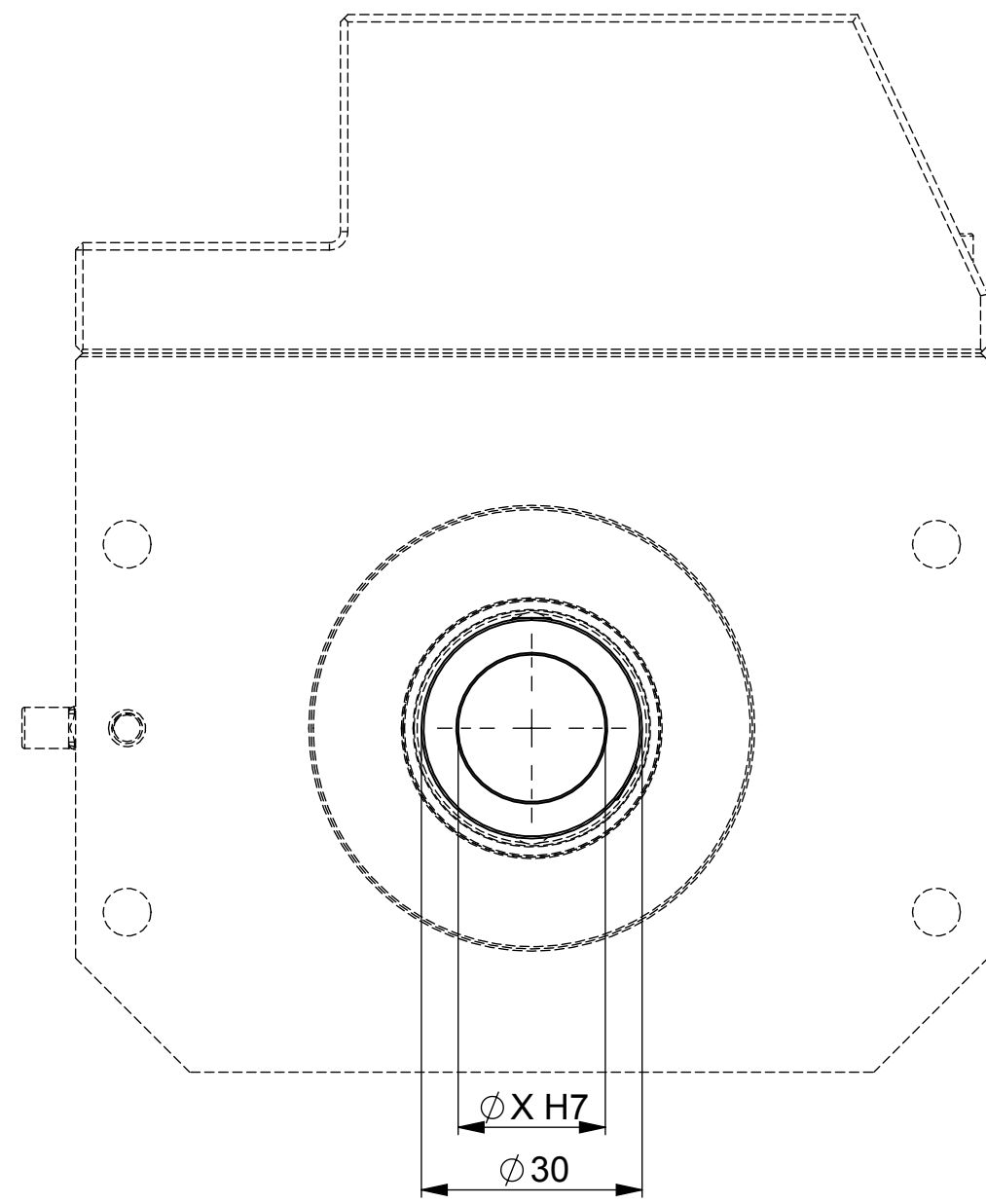
C

B

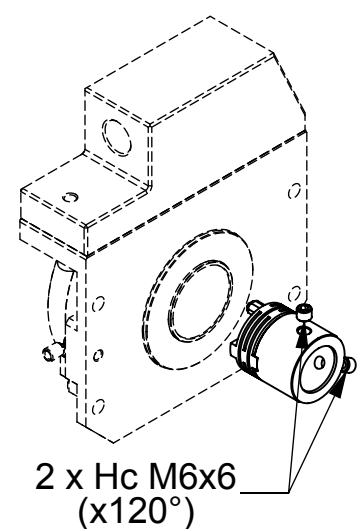
B


A

A



Ordering reference: **M9410/010-10** for X=10mm
M9410/010-12 for X=12mm
M9410/010-14 for X=14mm
M9410/010-20 for X=20mm
M9410/010-E3 for X=3/8"
M9410/010-E6 for X=3/4"
M9410/010-E4 for X=1/2"
M9410/010-E5 for X=5/8"



UNCONTROLLED COPY		 BEI SENSORS SAS Espace Européen de l'Entreprise 9, rue de Copenhague BP 70044 - F 67013 STRASBOURG Cedex Tel : +33 (0)3 88 20 81 40	
FIRST ISSUE DATE : 14/05/2018	DRAWN : RHM	SENSATA TECHNOLOGIES PROPRIETARY AND CONFIDENTIAL. NEITHER THIS PRINT NOR THE INFORMATION CONTAINED HEREON IS TO BE USED AGAINST THE INTERESTS OF SENSATA TECHNOLOGIES OR AGAINST THE INTERESTS OF ANY OF ITS AFFILIATED COMPANIES OR WHOLLY OWNED SUBSIDIARIES.	
APPROVED : JHH	DATE : 14/05/2018		
ECN :	UNLESS OTHERWISE SPECIFIED DIMENSIONS ARE IN MILLIMETERS [INCHES] AND ARE INTENDED AS NOMINAL. SEE PRODUCT SPECIFICATION FOR MORE DETAILS.	TITLE	
DATE :		Integrated Coupling kit for LP35 HC	
Housing material :	DO NOT SCALE DRAWING	SIZE A3	REV. A
Flange material :	EUROPEAN SYSTEM	DWG NO. M030	
Shaft material : AISI 303		SCALE 1/1	SHEET 1 OF 1

4

3

2

1

DEVICE:

PROJECT: