

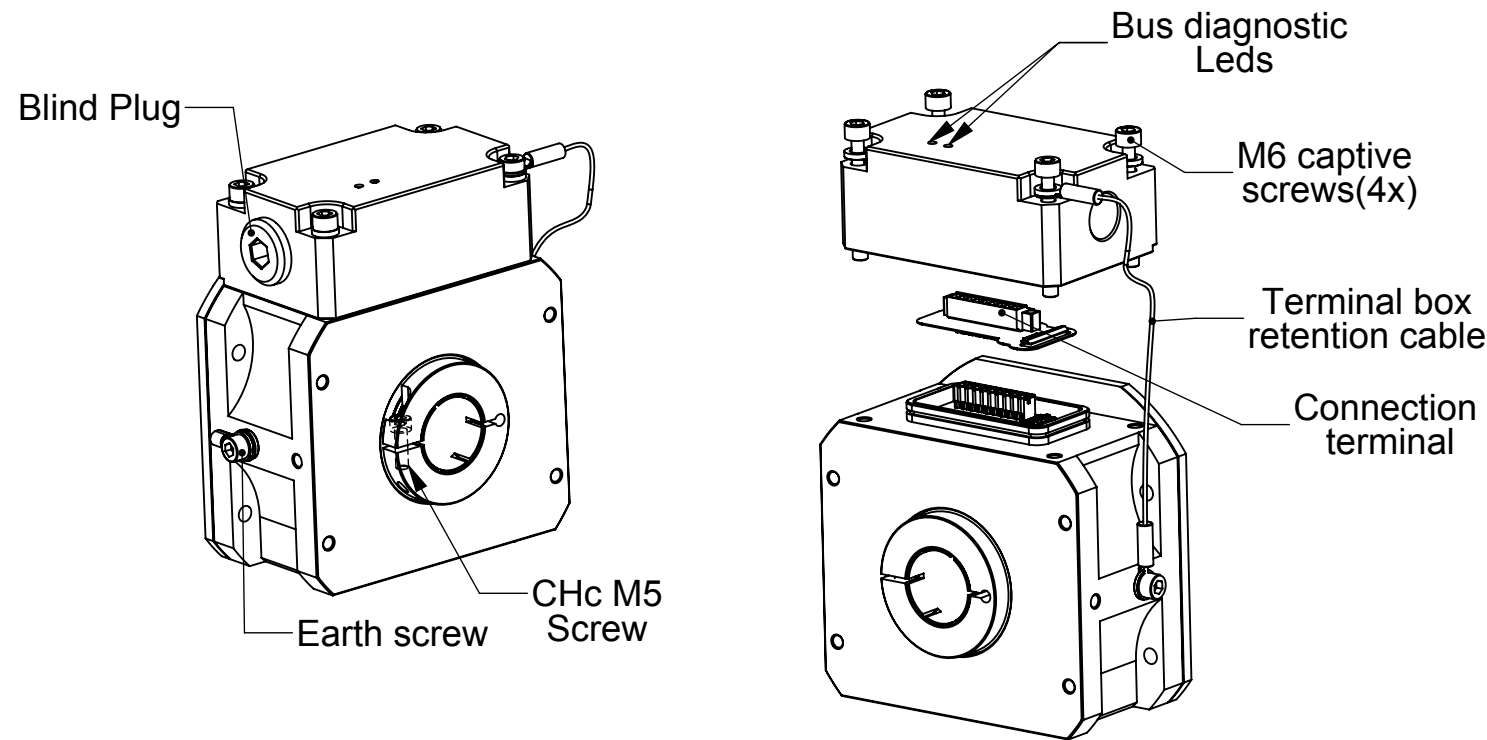
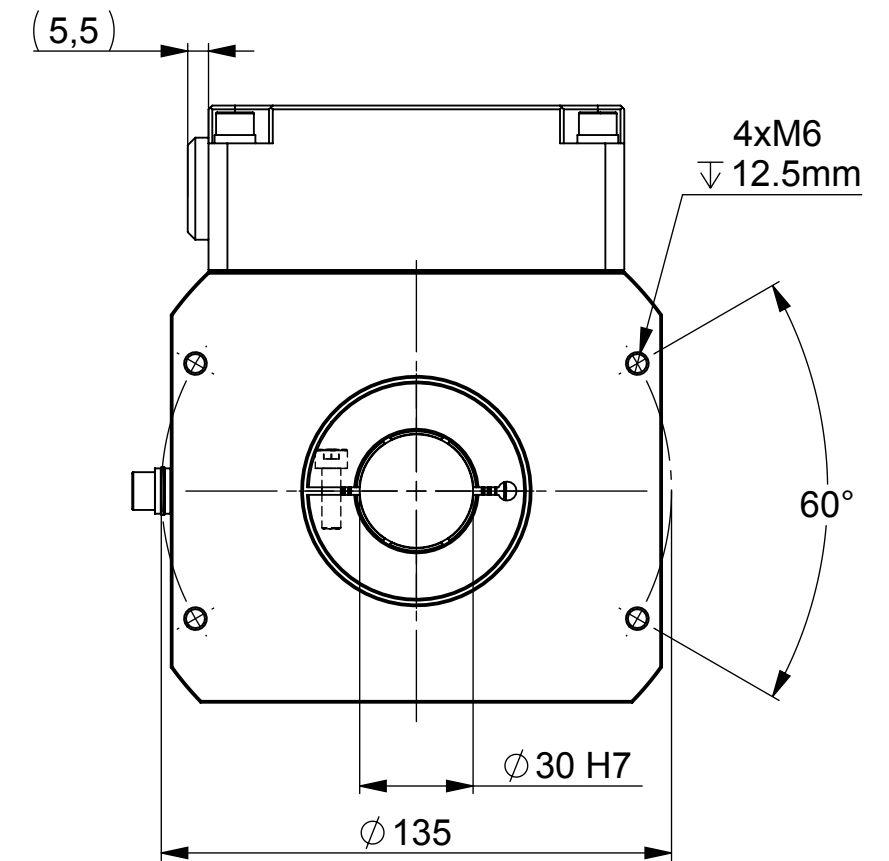
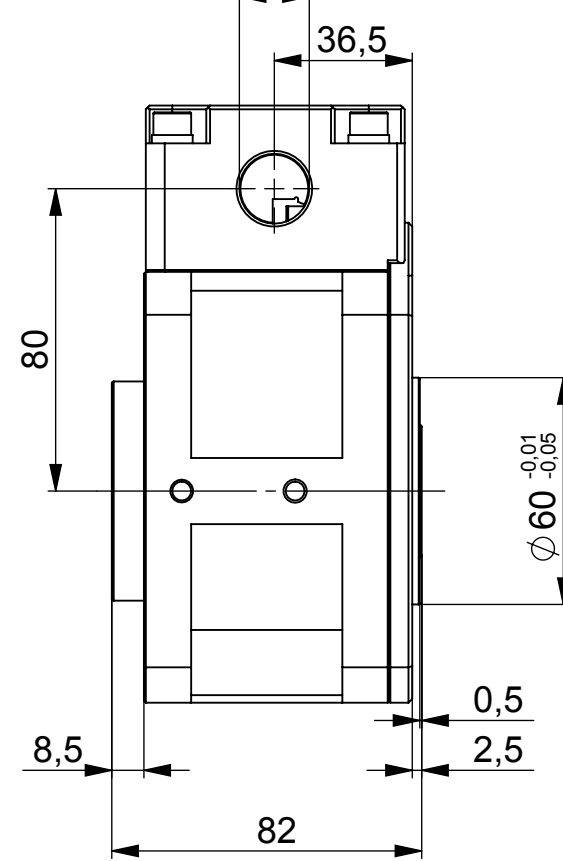
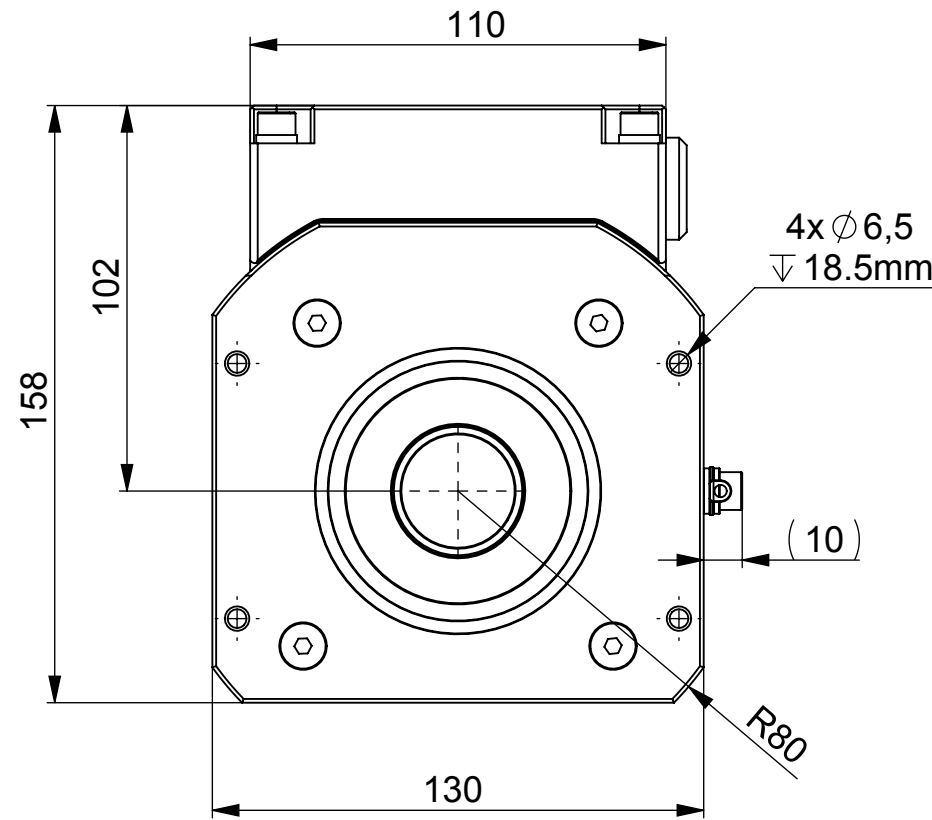
4


3

2

1

Threaded Holes on both sides
M20x1.5 or 1/2"NPT



UNCONTROLLED COPY		 BEI SENSORS SAS Espace Européen de l'Entreprise 9, rue de Copenhague BP 70044 - F 67013 STRASBOURG Cedex Tel : +33 (0)3 88 20 81 40	
FIRST ISSUE DATE : 31/05/2018	SENSATA TECHNOLOGIES PROPRIETARY AND CONFIDENTIAL. NEITHER THIS PRINT NOR THE INFORMATION CONTAINED HEREON IS TO BE USED AGAINST THE INTERESTS OF SENSATA TECHNOLOGIES OR AGAINST THE INTERESTS OF ANY OF ITS AFFILIATED COMPANIES OR WHOLLY OWNED SUBSIDIARIES.	TITLE MAUX30//E2R	
DRAWN : RHM		UNLESS OTHERWISE SPECIFIED DIMENSIONS ARE IN MILLIMETERS [INCHES] AND ARE INTENDED AS NOMINAL. SEE PRODUCT SPECIFICATION FOR MORE DETAILS.	SIZE A3
APPROVED : JHH	DO NOT SCALE DRAWING EUROPEAN SYSTEM	SCALE 1/2	SOLIDWORKS
DATE : 31/05/2018		REV. A	
Housing material : Aluminum		SHEET 1 OF 1	
Flange material : Aluminum			
Shaft material : Stainless Steel			

4

3

2

1

DEVICE:

PROJECT: