

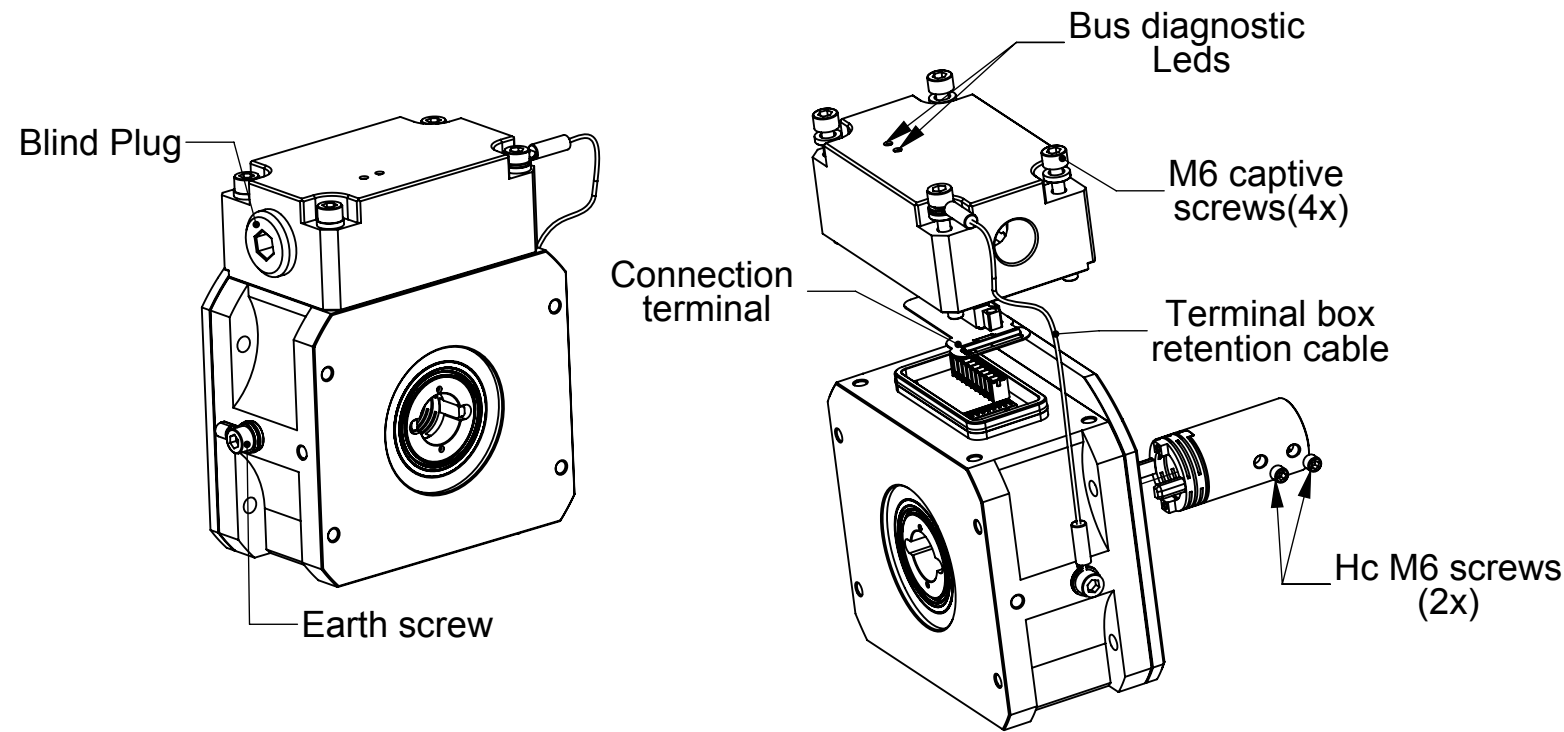
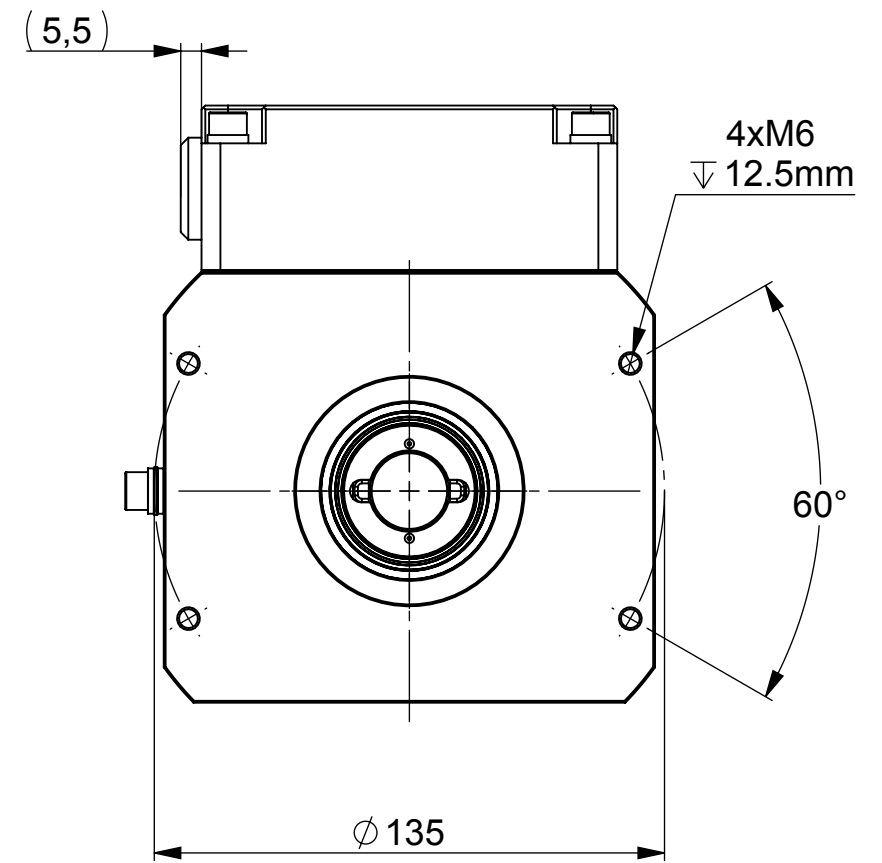
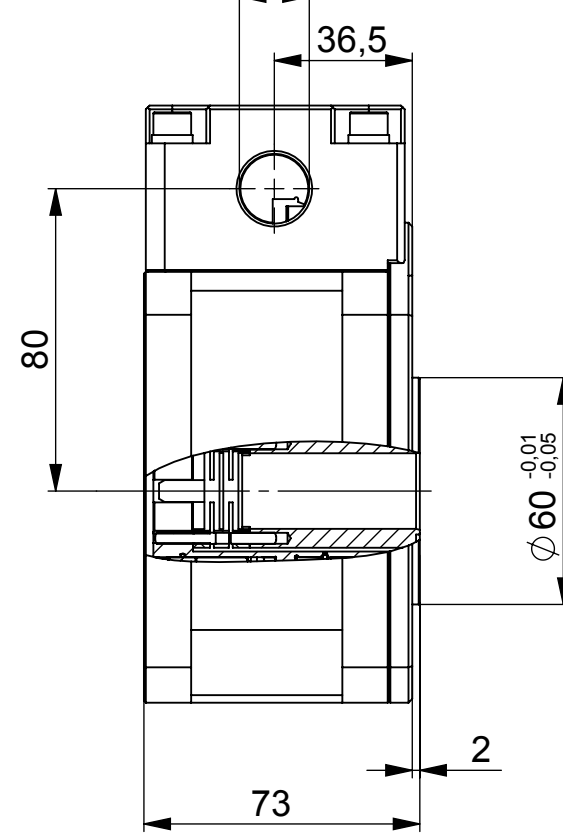
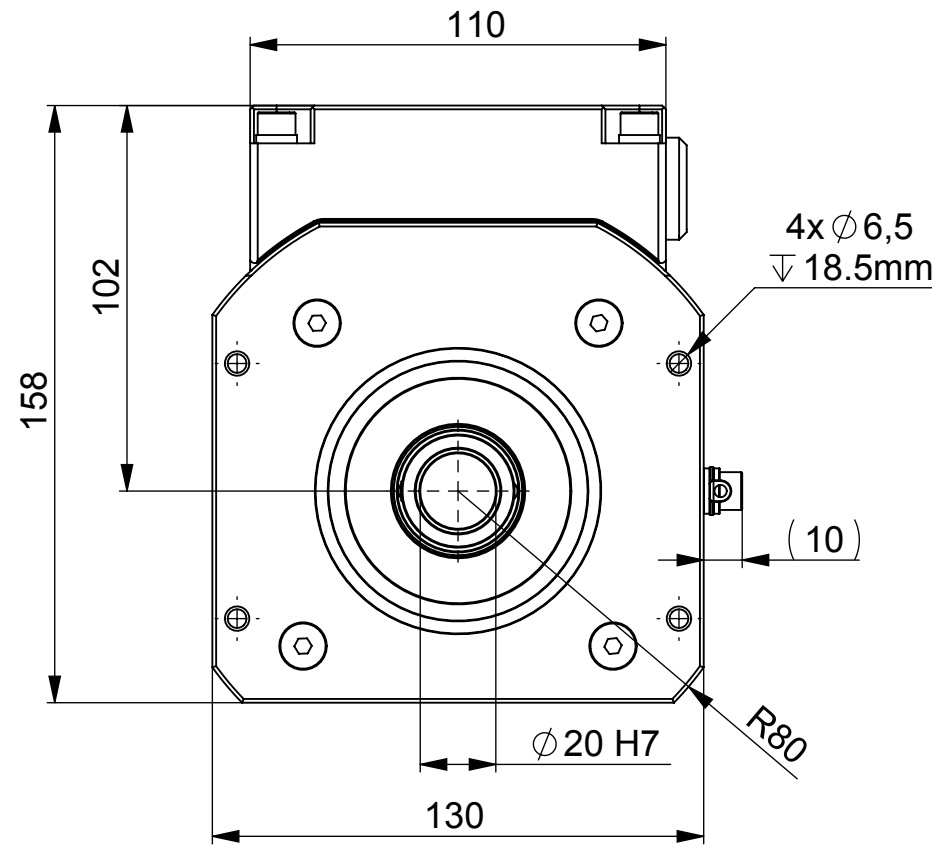
4


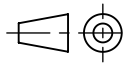
3

2

1

Threaded Holes on both sides
M20x1.5 or 1/2"NPT



UNCONTROLLED COPY			
FIRST ISSUE DATE : 31/05/2018	<small>SENSATA TECHNOLOGIES PROPRIETARY AND CONFIDENTIAL. NEITHER THIS PRINT NOR THE INFORMATION CONTAINED HEREON IS TO BE USED AGAINST THE INTERESTS OF SENSATA TECHNOLOGIES OR AGAINST THE INTERESTS OF ANY OF ITS AFFILIATED COMPANIES OR WHOLLY OWNED SUBSIDIARIES.</small>	<small>BEI SENSORS SAS Espace Européen de l'Entreprise 9, rue de Copenhague BP 70044 - F 67013 STRASBOURG Cedex Tel : +33 (0)3 88 20 81 40</small>	
DRAWN : RHM		<small>BEI Sensors</small>	
APPROVED : JHH		TITLE MAAX20//E2R	
DATE : 31/05/2018	<small>UNLESS OTHERWISE SPECIFIED DIMENSIONS ARE IN MILLIMETERS [INCHES] AND ARE INTENDED AS NOMINAL. SEE PRODUCT SPECIFICATION FOR MORE DETAILS.</small>	<small>SIZE</small> A3	<small>DWG NO.</small> M039
ECN :	<small>DO NOT SCALE DRAWING</small>	<small>EUROPEAN SYSTEM</small> 	<small>REV.</small> A
<small>Housing material : Aluminum Flange material : Aluminum Shaft material : Stainless Steel</small>	<small>SCALE</small> 1/2	<small>SOLIDWORKS</small>	<small>SHEET</small> 1 OF 1

4

3

2

1

DEVICE:

PROJECT: